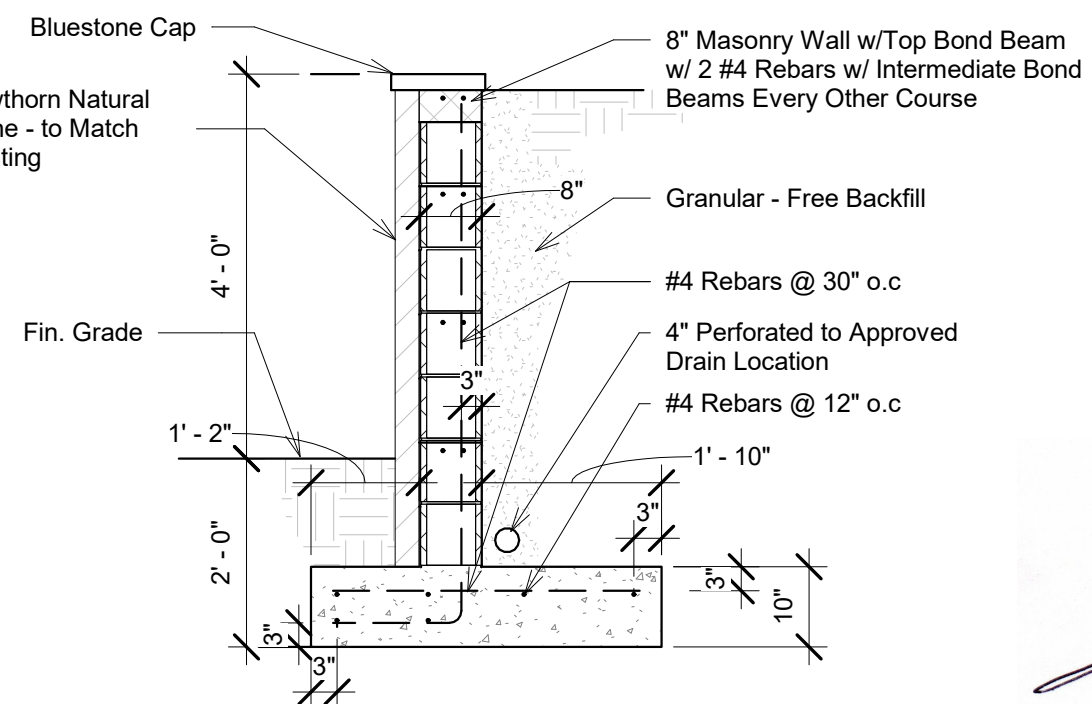
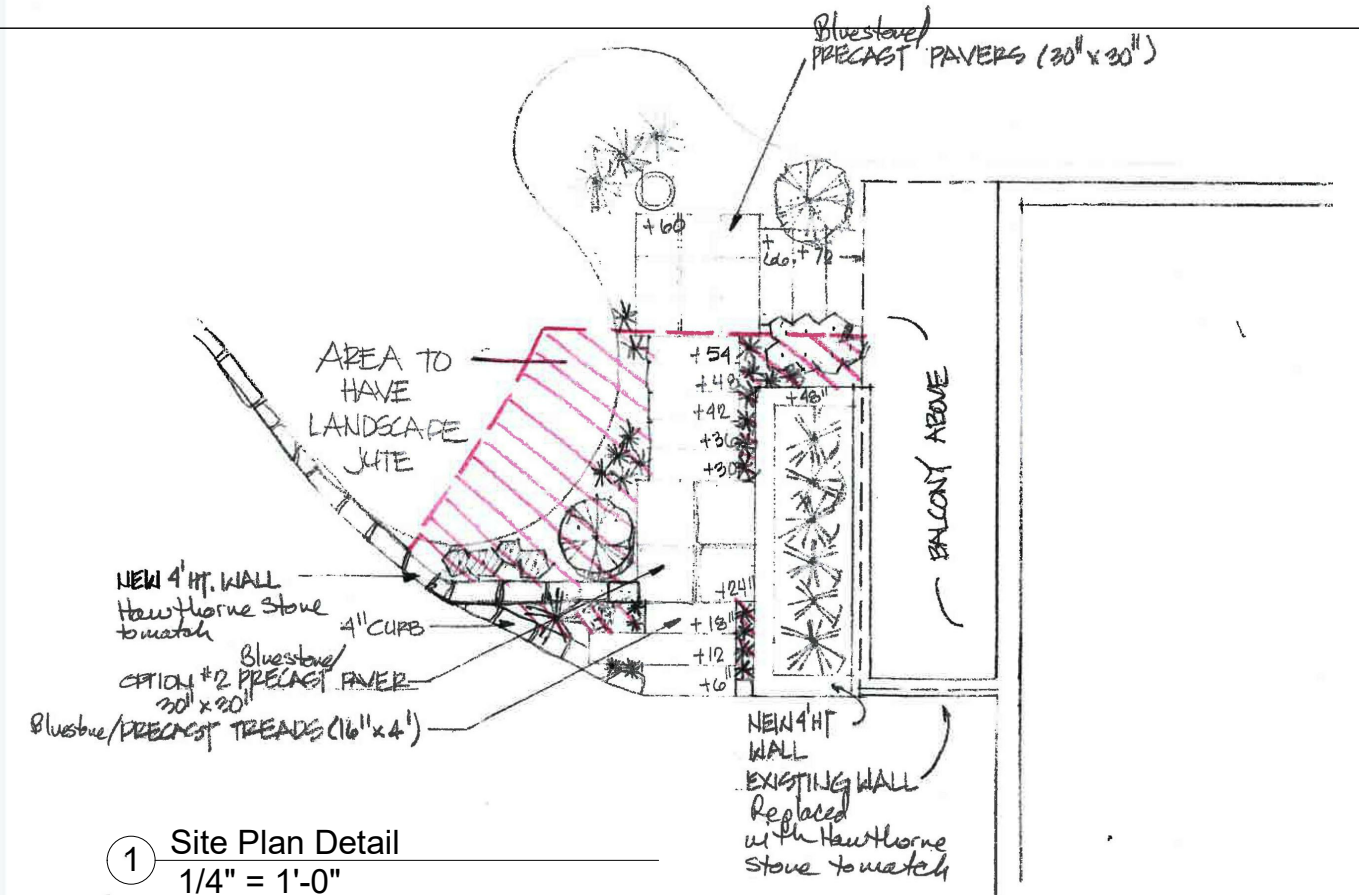


General Notes:

1. The Minimum Concrete Compression Strentht @ 28 Days Shall Be 3,500psi and Shall Comply with ACI 318.
2. Reinforcing Steel Shall Comply with ASTM A615 and Shall Havea Yield Strentht of 60,000 psi.
3. Concrete Masonry Block Shall Comply with ASTM C90
4. All Joints Reinforcement, Ties & Other Accessories Shall be Resistant to Corrosion.
5. All Head and Bed Joints Shall Be 3/8" Thick. Bed Joints of the Starting Course Foundation May be Between 1/4" & 3/4". Mortar Shall Conform to ASTM C270.



③ Retaining Wall Section
1/2" = 1'-0"

<div>43 Appleton Place</div> <div>42 Appleton Place</div> <div>Dobbs Ferry NY</div>	<div>studioPEDRAZZI Architects</div> <div>Thomas R. Pedrazzi, RA, LEED AP</div> <div>200 W. 58th Street</div> <div>New York, NY 10019</div> <div>phone: 212.581.1978</div>	New Front Entry Retaining Wall		
		Project number	Project Number	A101
		Date	4/16/2020	
		Drawn by	TRP	
		Checked by	Checker	