

FEATURES

FRENCHWOOD® HINGED INSWING PATIO DOORS

Frame

A Frame constructed with a wood core and a fiberglass exterior. This construction produces a rigid frame and a low-maintenance, durable exterior.

B Wood members are treated with a water-repellent preservative for long-lasting* protection and performance.

The interior wood jamb has an extension jamb kerf, making it easy to add interior extension jambs matching wall thicknesses.

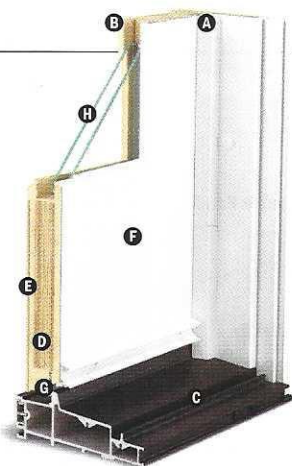
Frenchwood® hinged inswing patio doors are available in 4 1/8" (116) and 6 1/8" (167) jamb depths.

Sill

C One-piece fiberglass design provides superior water management. The nonconductive fiberglass construction enhances energy performance, and its superior strength eliminates the need for a sill support.

Slip- and wear-resistant poly bead finish available in either neutral gray or dark bronze color.

Factory-applied drop-nose channel attachment is optional for enhanced water performance. See below for details.



Panel

D Panel stiles and rails are constructed of an engineered LVL core. This LVL core provides strength and helps prevent warping for consistent smooth operation.

E Interior panel surfaces are constructed from premium wood veneer available in pine, maple, oak, cherry, mahogany** and vertical grain douglas fir. All prefinished interior options use water-based paints and stains.

F The exterior of the wood panel is protected with a Flexacron® paint system; this stabilized polyester paint is electrostatically applied to penetrate all exterior surfaces for maximum protection and a lustrous, low-maintenance finish.

G Factory-applied, one-piece (welded corners), compression-type weatherstrip material is attached directly to the panel, not the frame, creating a continuous plane around the panel to provide maximum effectiveness against air and water infiltration. This system provides a long-lasting,* energy-efficient barrier against wind, water and dust.

Hinged inswing operating panels are available in either single left- or right-hand active or two-panel active/passive jamb-hinged.

Adjustable Hinges

Adjustable hinges have ball-bearing pivots for smooth, frictionless movement. Features easy horizontal and vertical adjustment, plus quick-release feature for easy panel removal.

This release feature is ideal for transporting large units up stairs or to other hard-to-reach areas. Gold dust finish is standard on wood interior doors. For units with a prefinished White interior, white finish hinges are standard. Also available in finishes that coordinate with hardware.

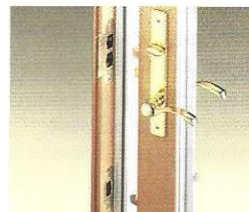


Glass

See below for details.

Hardware

Multi-Point Locking System



The Frenchwood hinged patio door has a multi-point locking system with a hook bolt above and below the center deadbolt. This system provides added weathertightness and enhanced security.

Optional Corrosion-Resistant Hardware

Optional corrosion-resistant locking mechanism is available and recommended for applications within two miles of the coast and other harsh environments.*

A-Series
Frenchwood®
Patio Door Overview

COMMON FEATURES

Glass

Panels are silicone bed glazed and finished with an interior wood glass stop.

High-performance dual-pane glass options include:

- Low-E4® tempered
- Low-E4 tempered glass with HeatLock® technology
- Low-E4 Sun tempered
- Low-E4 SmartSun™ tempered
- Low-E4 SmartSun tempered glass with HeatLock technology

For even greater energy performance, triple-pane glass is available in these glass options:

- Low-E4® tempered
- Low-E4 Enhanced tempered
- Low-E4 Enhanced triple-pane tempered glass with HeatLock® technology
- Low-E4 SmartSun™ tempered
- Low-E4 SmartSun Enhanced tempered
- Low-E4 SmartSun Enhanced triple-pane tempered glass with HeatLock technology

Additional glass options are available. Contact your Andersen supplier.

A removable translucent film helps shield the glass from damage during delivery and construction and simplifies finishing at the jobsite.

Patterned Glass

Patterned glass options are available. See pages 10-11 for more details.

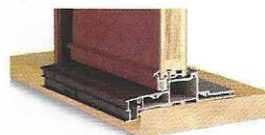
Taller Heights

A-Series Frenchwood patio doors and patio door sidelights are now available in custom sizes for rough opening heights up to 10' (3028). See pages 150-152 for more information.



Frenchwood patio doors are available with Stormwatch® protection. For a copy of the Andersen® Coastal Product Guide, go to andersenwindows.com/coastal or contact your Andersen supplier.

Performance Grade (PG) Upgrade Optional Drop-Nose Channel



Factory-applied, patented drop-nose channel is available when higher product performance is required. Drop-nose channel provides enhanced water performance without increasing interior sill height. Shown on a Frenchwood hinged inswing patio door. Details shown for gliding door on page 123 and hinged inswing door on page 130.

* Visit andersenwindows.com/warranty or contact your Andersen supplier for details on the A-Series Limited Warranty.

** Actual wood is Sapele, a non-endangered species of mahogany, grown in Africa, with color and characteristics similar to American mahoganies.

† Flexacron® is a registered trademark of PPG Industries, Inc.

Dimensions in parentheses are in millimeters.

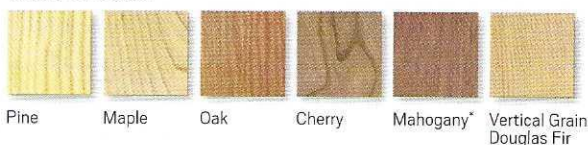
FRENCHWOOD PATIO DOORS

EXTERIOR



INTERIOR

WOOD SPECIES



Naturally occurring variations in grain, color and texture of wood make each door one of a kind. We cannot guarantee consistency in wood grain and/or color within a particular species, product or project. All wood interiors are unfinished unless a finish is specified.

FACTORY-FINISHED INTERIORS

Shown in maple. Available with pine, maple and oak only.



PAINTED OPTIONS

Available with pine only.

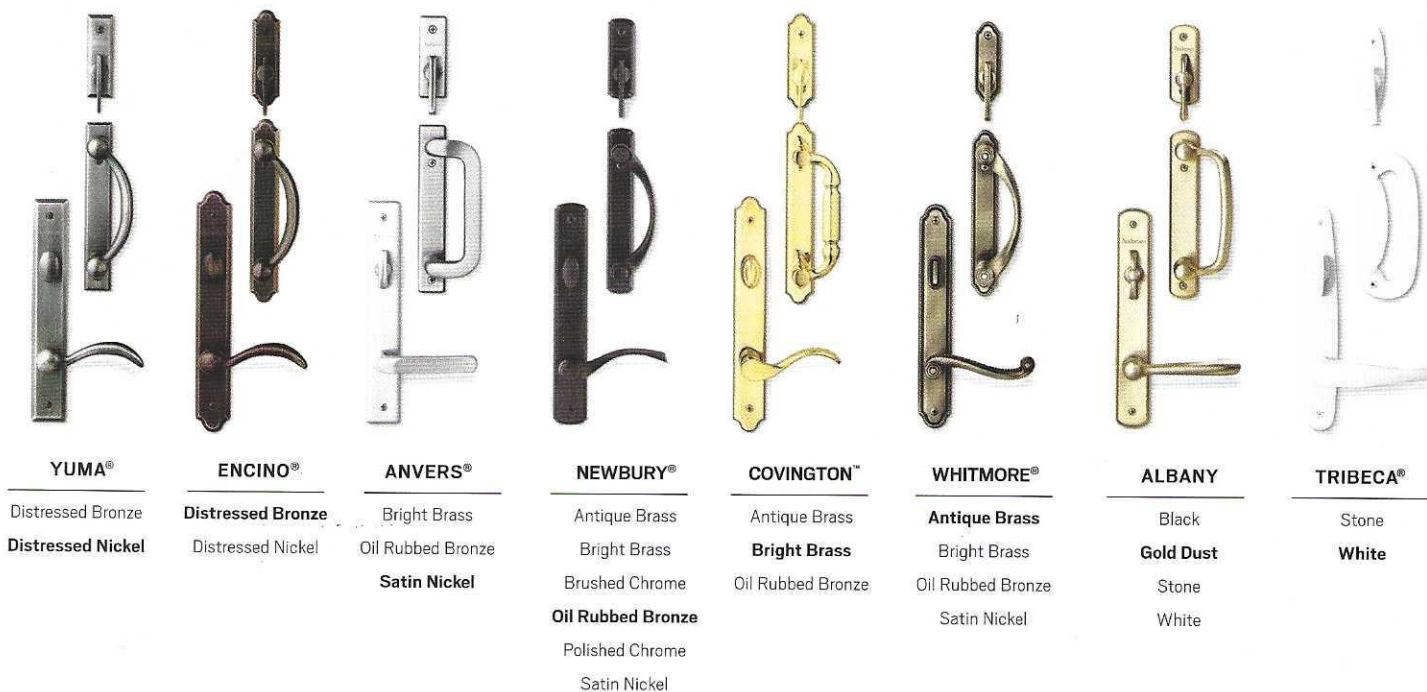


HARDWARE FINISHES



Distressed bronze and oil rubbed bronze are "living" finishes that will change with time and use.

HARDWARE OPTIONS** *Bold name denotes finish shown.*



* Actual wood is Sapele, a non-endangered species of mahogany, grown in Africa, with color and characteristics similar to American mahoganies.

** Hardware sold separately.

Printing limitations prevent exact duplication of colors and finishes. See your Andersen supplier for actual color and finish samples.

Tribeca and Albany hardware are zinc diecast with powder-coated durable finish. Other hardware is solid forged brass. Mix-and-match interior and exterior style and finish options are available. Bright brass and satin nickel finishes feature a 10-year limited warranty.

WINDOWS

FEATURES

CASEMENT & AWNING

Frame

A Frame constructed with a wood core and a Fibrex® composite material exterior. This construction produces a rigid frame and a low-maintenance, durable exterior.

B Wood members are treated with a water-repellent preservative for long-lasting* protection and performance.

C The weatherstripping system combines an exterior watershed design and a foam weatherstrip seal between the sash and frame, providing a long-lasting, energy-efficient barrier against wind, water and dust.

D A factory-applied rigid vinyl flange helps seal the unit to the structure. Available in a standard design or in a trim flange design (shown). The trim flange allows for Andersen® exterior trim surrounds to be applied in seconds after window installation.

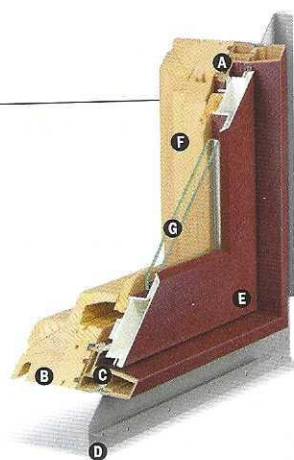
Sash

E Fiberglass construction provides durable, strong and long-lasting performance. Finished with a Flexacron® paint system. This stabilized polyester paint is electrostatically applied for maximum protection and a lustrous, low-maintenance finish.

Traditional architectural style:

- Classic chamfer detailing
- The look of mortise-and-tenon joinery
- Tall bottom rail on casement window aligns with double-hung and picture windows for common sight lines

F Natural wood interiors are treated with a water-repellent preservative for long-lasting* protection and performance. Interior stops are fastened using a compression fit system so there are no nail holes to fill.



G Glass

See page 25 for details.

Hardware

Smooth Control Hardware System

Smooth operation provided by a worm gear drive design makes opening and closing almost effortless regardless of unit size. Also available with an optional split-arm operator that moves the sash away from the frame for easier glass cleaning (not available on all sizes). Hardware option and finish must be specified. Operator handle and cover sold separately.

Single-Action Casement Lock



Single-action lock easily releases all locking points on casement sash while the reach-out action eliminates binding when closing. The lock handle is offered in finishes that coordinate with your specified hardware option.

Awning Sash Lock

Awning windows feature dual sash locks. Hardware style and finish options are compatible with Andersen casement windows to ensure consistency in appearance when used in combination designs.

DOUBLE-HUNG

Frame

A Frame constructed with a wood core and a Fibrex composite material exterior. This construction produces a rigid frame and a low-maintenance, durable exterior.

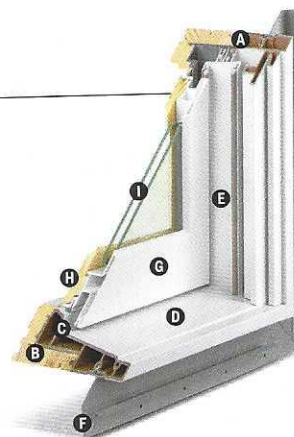
B Wood members are treated with a water-repellent preservative for long-lasting* protection and performance.

C The dual weatherstripping system utilizes a double foam-filled design that creates a pressure equalization chamber, knocking down driving rain and delivering a long-lasting, energy-efficient barrier against wind, water and dust.

D Traditional sloped sill design.

E For units with White exterior, exterior jamb liner is White. For all other exterior colors, the exterior jamb liner is Sandtone.

F A factory-applied rigid vinyl flange helps seal the unit to the structure. Available in a standard design or in a trim flange design (shown). The trim flange allows for Andersen exterior trim surrounds to be applied in seconds after window installation.



I Glass

See page 25 for details.

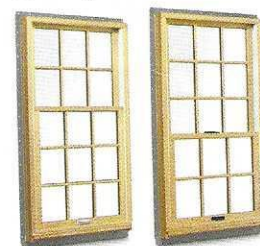
Hardware

Sash Lock



Traditional spoon lock design has an integrated Tilt to Clean feature.

Sash Options**



Cottage Style

Reverse Cottage Style

Sash

G Fiberglass construction provides durable, strong and long-lasting performance. Finished with a Flexacron paint system. This stabilized polyester paint is electrostatically applied for maximum protection and a lustrous, low-maintenance finish.

Traditional architectural style:

- Classic chamfer detailing
- The look of mortise-and-tenon joinery
- Tall bottom rail on double-hung window aligns with casement and picture windows for common sight lines

H Natural wood interiors are treated with a water-repellent preservative for long-lasting* protection and performance. Interior stops are fastened from behind so there are no nail holes to fill.

* Visit andersenwindows.com/warranty or contact your Andersen supplier for details on the A-Series Limited Warranty.

** Shown on 400 Series Tilt-Wash double-hung full-frame windows.

"Flexacron" is a registered trademark of PPG Industries, Inc.

PICTURE & STATIONARY TRANSOM

Frame

Frame constructed with a wood core and fiberglass exterior. This construction produces a rigid frame and a low-maintenance, durable exterior.

Wood members are treated with a water-repellent preservative for long-lasting* protection and performance.

A factory-applied rigid vinyl flange helps seal the unit to the structure. Available in a standard design or in a trim flange design. The trim flange allows for Andersen® exterior trim surrounds to be applied in seconds after window installation.

Fiberglass construction provides durable, strong and long-lasting* performance. Finished with a Flexacron® paint system. This stabilized polyester paint is electrostatically applied for maximum protection and a lustrous, low-maintenance finish.

Traditional architectural style:

- Classic chamfer detailing
- The look of mortise-and-tenon joinery
- Tall bottom rail on picture window aligns with casement and double-hung windows for common sight lines
- Shorter bottom rail on stationary transom provides an attractive sight line when joined above other A-Series windows or patio doors

Natural wood interiors are treated with a water-repellent preservative for long-lasting* protection and performance. Interior stops are fastened using a compression fit system so there are no nail holes to fill.

Glass

See this page.

VENTING TRANSOM

Frame

Frame constructed with a wood core and a Fibrex® composite material exterior. This construction produces a rigid frame and a low-maintenance, durable exterior.

Wood members are treated with a water-repellent preservative for long-lasting* protection and performance.

The weatherstripping system combines an exterior watershed design and a foam weatherstrip seal between the sash and frame, providing a long-lasting,* energy-efficient barrier against wind, water and dust.

A factory-applied rigid vinyl flange helps seal the unit to the structure. Available in a standard design or in a trim flange design. The trim flange allows for Andersen exterior trim surrounds to be applied in seconds after window installation.

Sash

Fiberglass construction provides durable, strong and long-lasting* performance. Finished with a Flexacron paint system. This stabilized polyester paint is electrostatically applied for maximum protection and a lustrous, low-maintenance finish.

Traditional architectural style:

- Classic chamfer detailing
- The look of mortise-and-tenon joinery
- Shorter bottom rail provides an attractive sight line when joined above other A-Series windows or patio doors

Natural wood interiors are treated with a water-repellent preservative for long-lasting* protection and performance. Interior stops are fastened using a compression fit system so there are no nail holes to fill.

Glass

See this page.

Hardware

Smooth operation provided by a worm gear drive design makes opening and closing almost effortless regardless of unit size.

Venting transoms feature dual sash locks. Hardware style and finish options are compatible with Andersen casement windows to ensure consistency in appearance when used in combination designs.

COMMON FEATURES

Glass

¾" (19) dual-pane glass construction provides exceptional energy performance.

High-performance glass options include:

- Low-E4®
- Low-E4 glass with HeatLock® technology
- Low-E4 Sun
- Low-E4 SmartSun™
- Low-E4 SmartSun glass with HeatLock technology

For even greater energy performance, 1" (25) triple-pane glass is available in these glass options:

- Low-E4®
- Low-E4 Enhanced
- Low-E4 Enhanced triple-pane glass with HeatLock® technology
- Low-E4 SmartSun™
- Low-E4 SmartSun Enhanced
- Low-E4 SmartSun Enhanced triple-pane glass with HeatLock technology

Tempered glass and other glass options are available. Contact your Andersen supplier.

A removable translucent film helps shield the glass from damage during delivery and construction and simplifies finishing at the jobsite.

Patterned Glass

Patterned glass options are available. See page 10 for more details.

StormWATCH[®] PROTECTION

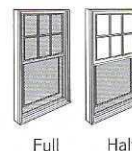
A-Series windows are available with Stormwatch® protection. For a copy of the Andersen® Coastal Product Guide, go to andersenwindows.com/coastal or contact your Andersen supplier.

ACCESSORIES Sold Separately

Insect Screens

Full or Half Window Insect Screens

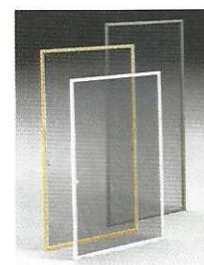
Full insect screens are available for all venting windows. Andersen also offers the option of half insect screens for the lower sash of our double-hung windows.



Conventional Insect Screens

Aluminum insect screens are available with frames finished in White, Stone, Gold Dust and in all interior painted options for casement, awning and venting transom windows. Insect screens for double-hung windows match product exterior.

TruScene[®] Insect Screen



Exclusive Andersen TruScene insect screens provide over 50% more clarity than our conventional insect screens for a beautiful unobstructed view. They allow more fresh air and sunlight in, while doing a better job of keeping out small insects. For casement, awning and venting transom windows, frames are available in White, Stone or Gold Dust as well as all interior painted options, six wood veneers and six stain colors to match the interior finish. Insect screens for double-hung windows are installed on the exterior of the window and frames match product exterior.

Accessories continued on the next page.

* Visit andersenwindows.com/warranty or contact your Andersen supplier for details on the A-Series Limited Warranty.

Flexacron® is a registered trademark of PPG Industries, Inc.

Dimensions in parentheses are in millimeters.

WINDOWS

EXTERIOR



INTERIOR

WOOD SPECIES



FACTORY-FINISHED INTERIORS

Shown in maple. Available with pine, maple and oak only.



Naturally occurring variations in grain, color and texture of wood make each window one of a kind. All wood interiors are unfinished unless a finish is specified.

PAINTED OPTIONS

Available with pine and maple only.

See your Andersen supplier for availability of these painted options.



HARDWARE FINISHES



Distressed bronze and oil rubbed bronze are "living" finishes that will change with time and use.

HARDWARE

Bold name denotes finish shown.

Casement, Awning & Venting Transom Options†

CONTEMPORARY FOLDING



Black | Bright Brass | Gold Dust
Oil Rubbed Bronze | Satin Nickel
Stone | White

Folding handle avoids interference with window decorating treatments.

TRADITIONAL FOLDING



Antique Brass | Black
Bright Brass | Brushed Chrome
Distressed Bronze | Distressed Nickel
Gold Dust | Oil Rubbed Bronze
Polished Chrome | Satin Nickel
Stone | White

Double-Hung

TRADITIONAL

Lock & Keeper



Antique Brass | Black | Bright Brass
Brushed Chrome | Distressed Bronze
Distressed Nickel | Gold Dust
Oil Rubbed Bronze | Polished Chrome
Satin Nickel | Stone | White

Double-Hung Lift Options†

Bar Lift



Hand Lift



Finger Lift



ACCESSORIES

Sold Separately

Accessories continued from the previous page.

Frame

Extension Jamb

Extension jambs are available in pine, maple, oak, cherry, mahogany* and vertical grain douglas fir, precut to fit your unit. Available in 1/16" (1.5) increments up to 7 1/8" (181) and can be prefinished in six stain colors and in all interior painted options to match the interior of the unit. This option is also available factory applied.

Stools for Double-Hung Windows

Available in all six wood species and all prefinished options. Stools are available in 4 1/16" (116), 5 1/4" (133), 6 1/16" (167) and 7 1/8" (181) depths.

Hardware

Corrosion-Resistant Components

Corrosion-resistant hinge and operator arm hardware on casement, awning and venting transom windows is designed for applications in harsh and corrosive environments such as heavy industrial or coastal areas.*

Window Opening Control Device Kit

A Window Opening Control Device Kit is available for all A-Series venting windows, which limits opening the sash to less than 4" (102) when the window is first opened.

Vent Limiter

A vent limiter is available for most A-Series venting windows, which prevents opening the sash more than 4" (102).

Grilles

Grilles are available in a variety of configurations and widths. See pages 10-11 for details.

Exterior Trim

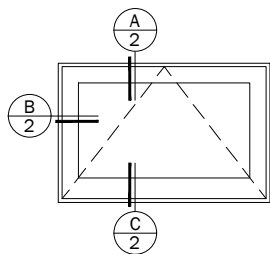
This product is available with Andersen® Exterior Trim. See pages 163-168 for details.

* Actual wood is Sapele, a non-endangered species of mahogany, grown in Africa, with color and characteristics similar to American mahoganies.

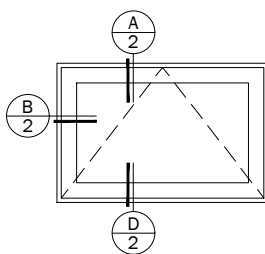
** Visit andersenwindows.com/warranty or contact your Andersen supplier for details on the A-Series Limited Warranty.

Printing limitations prevent exact duplication of colors and finishes. See your Andersen supplier for actual color and finish samples.

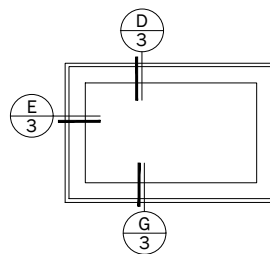
† Hardware sold separately. Dimensions in parentheses are in millimeters.



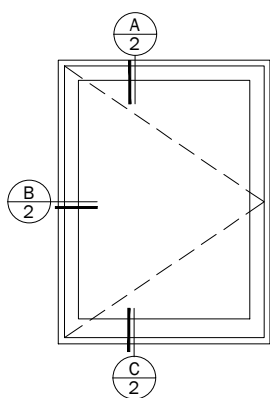
Awning



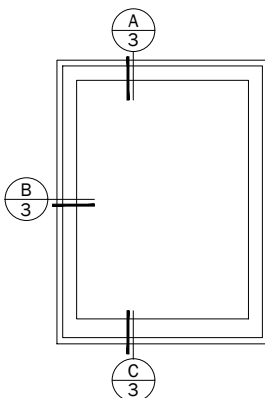
Transom Venting



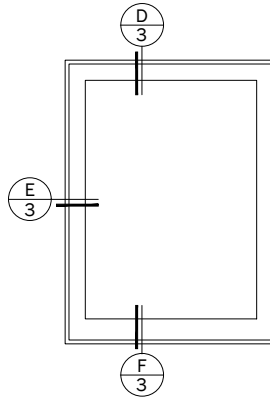
Transom Fixed



Casement Single



Casement Fixed



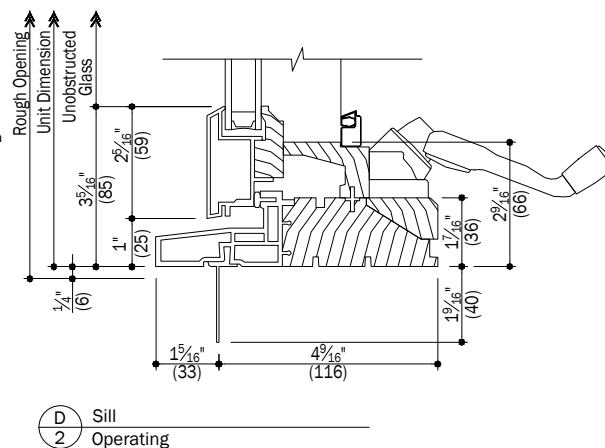
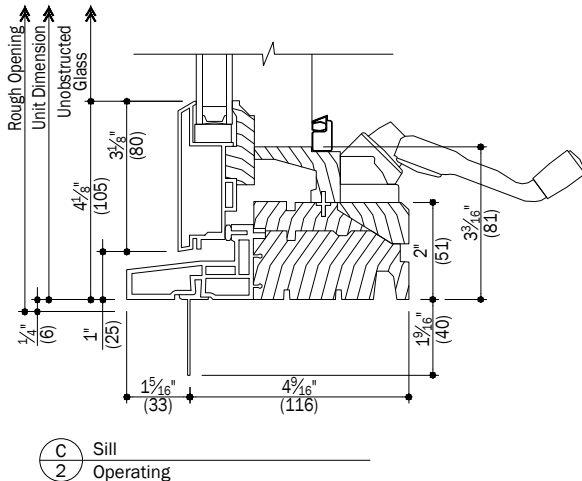
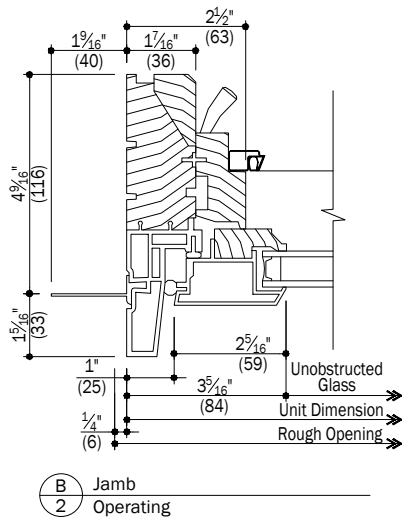
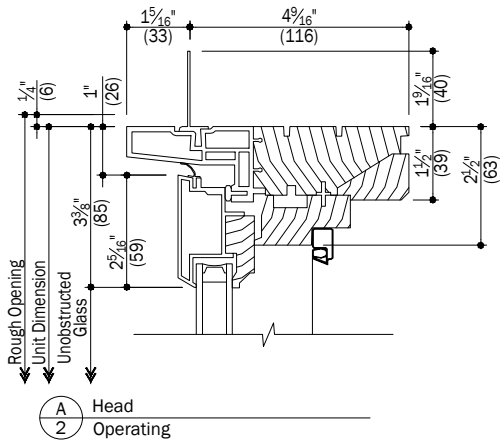
Picture

Notes:

Details have been optimized for use in architectural software and do not match manufacturing specifications.
Dimensions in parentheses are in millimeters.

See Pages 4 & 5 for Accessories

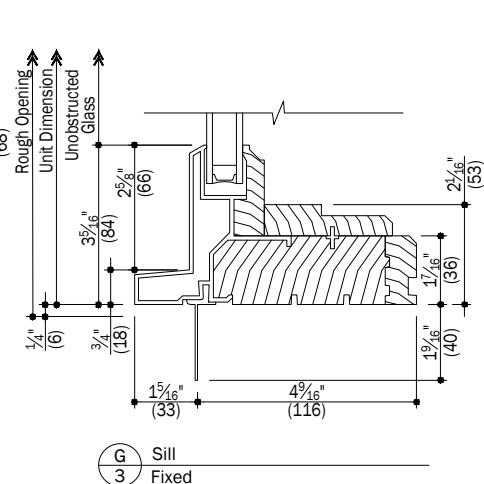
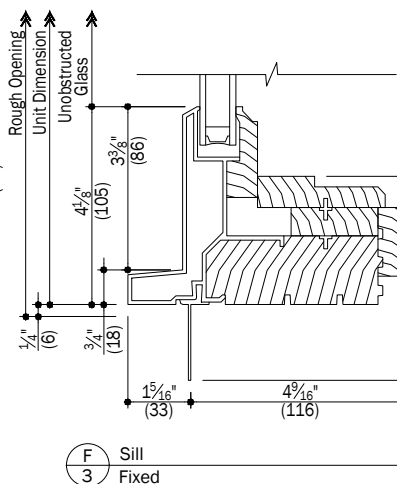
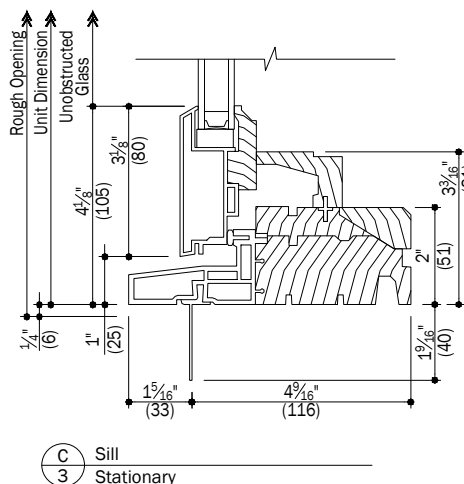
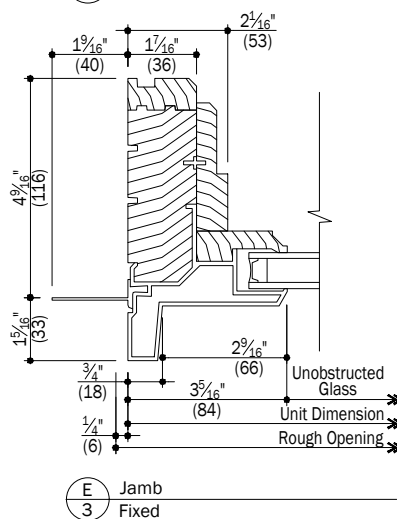
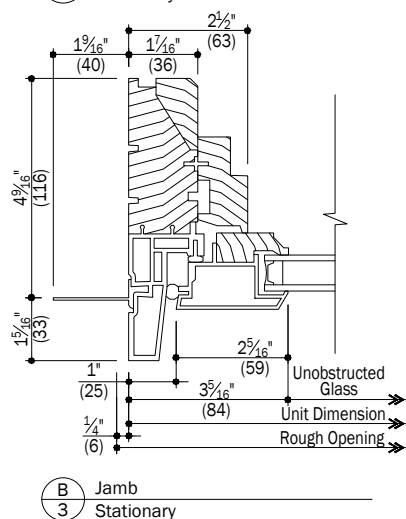
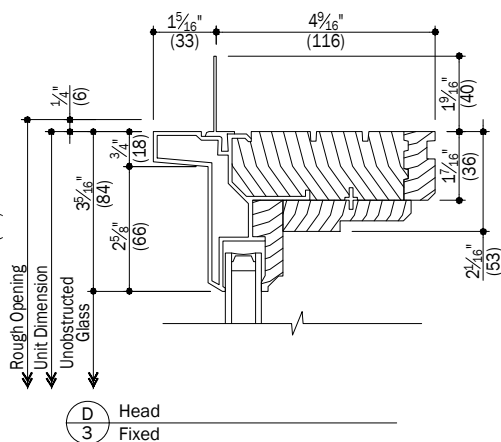
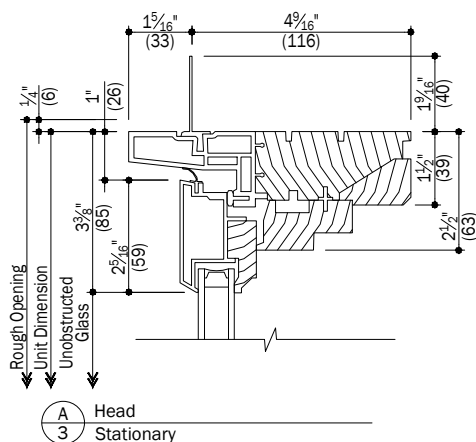
Date: 03/29/16
Scale: None



Notes:

Details have been optimized for use in architectural software and do not match manufacturing specifications.
Dimensions in parentheses are in millimeters.

See Pages 4 & 5 for Accessories

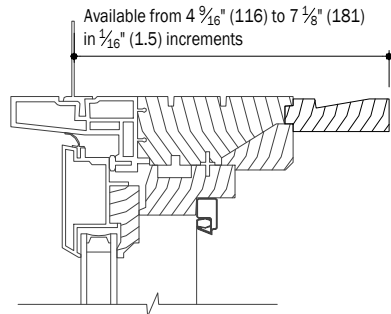


Notes:

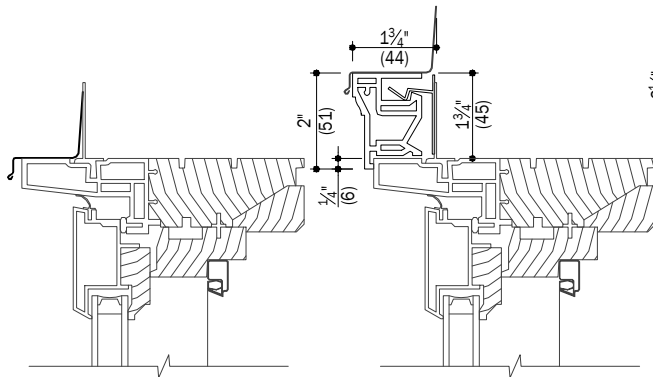
Details have been optimized for use in architectural software and do not match manufacturing specifications. Dimensions in parentheses are in millimeters.

See Pages 4 & 5 for Accessories

Date: 03/29/16
Scale: 3" (76) = 1' (305)

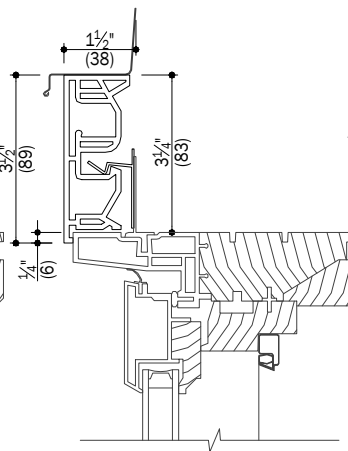


A
4 Extension Jamb

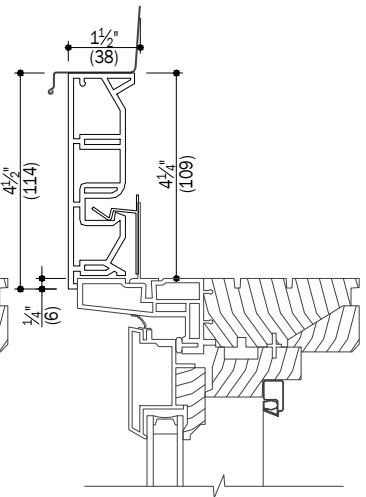


B
4 Drip Cap

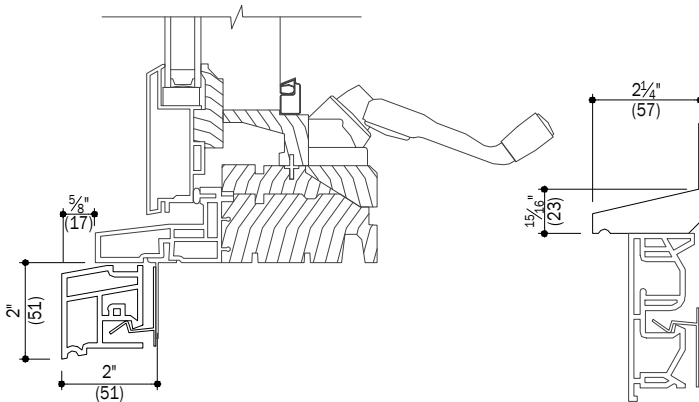
C
4 2" Brick Mould



D
4 3 1/2" Flat Casing

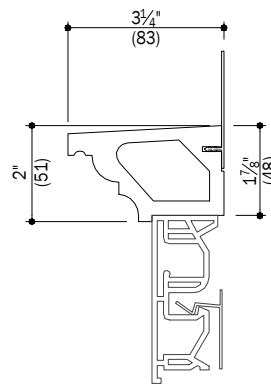


E
4 4 1/2" Flat Casing

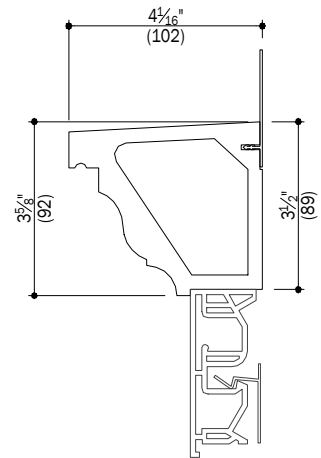


F
4 Sill Nose

G
4 Decorative Drip Cap



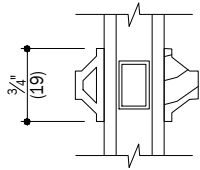
H
4 2" Cornice



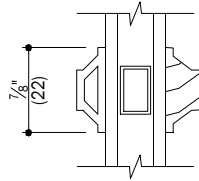
J
4 3 5/8" Cornice

Notes:

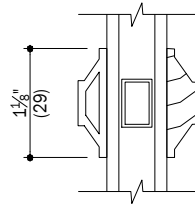
Details have been optimized for use in architectural software and do not match manufacturing specifications.
Dimensions in parentheses are in millimeters.



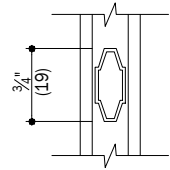
A
5 3/4" Full Divided Light



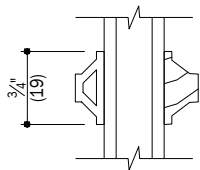
E
5 7/8" Full Divided Light



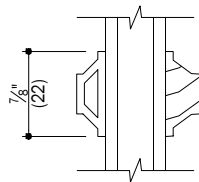
J
5 1 1/8" Full Divided Light



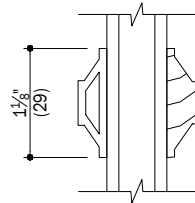
M
5 3/4" Finelight



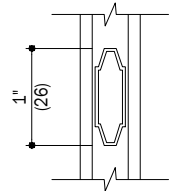
B
5 3/4" Simulated Divided Light
Removable interior is available



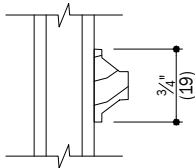
F
5 7/8" Simulated Divided Light
Removable interior is available



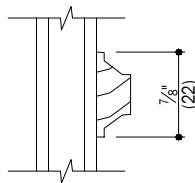
K
5 1 1/8" Simulated Divided Light
Removable interior is available



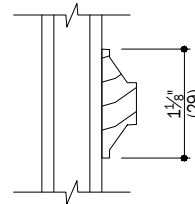
N
5 1" Finelight



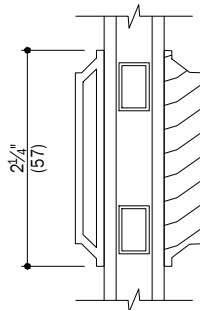
C
5 3/4" Removable Interior Grille



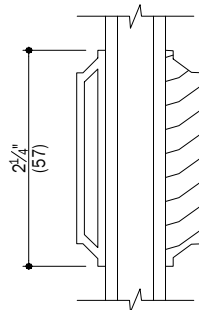
G
5 7/8" Removable Interior Grille



L
5 1 1/8" Removable Interior Grille



D
5 2 1/4" Full Divided Light
Simulated check rail

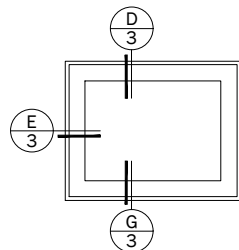


H
5 2 1/4" Simulated Divided Light
Simulated check rail

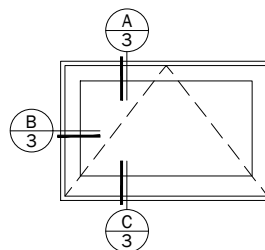
Notes:

Details have been optimized for use in architectural software and do not match manufacturing specifications.
Dimensions in parentheses are in millimeters.

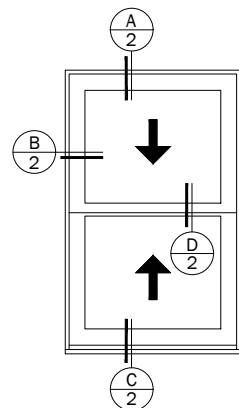
Date: 03/29/16
Scale: 6" (152) = 1' (305)



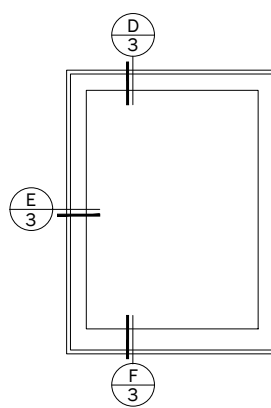
Transom Fixed



Transom Venting



Double-Hung



Picture

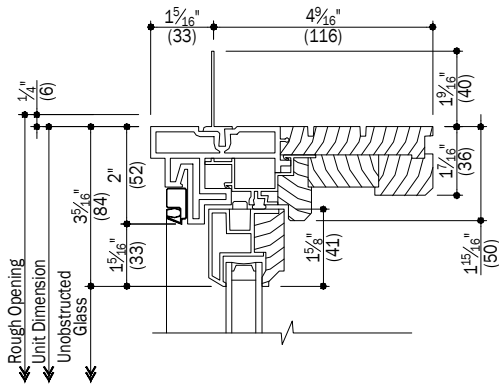
Notes:

Details have been optimized for use in architectural software and do not match manufacturing specifications. Dimensions in parentheses are in millimeters.

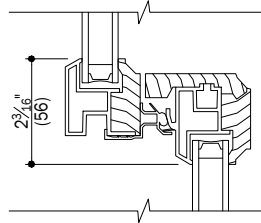
See Pages 4 Thru 6 for Accessories

Date: 03/29/16
Scale: None

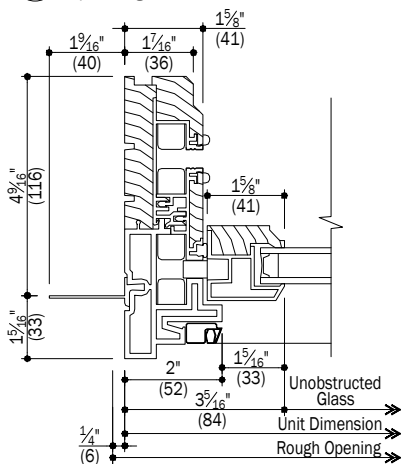
Double-Hung Windows



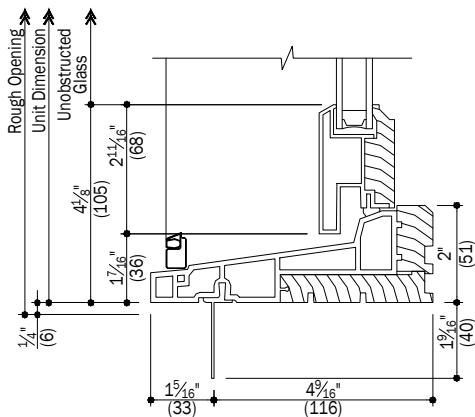
A Head
2 Operating



D Check Rail
2 Operating



B Jamb
2 Operating



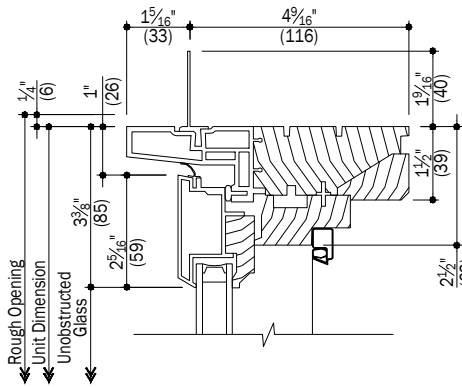
C Sill
2 Operating

Notes:

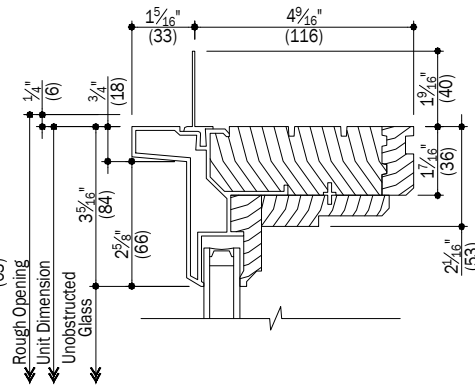
Details have been optimized for use in architectural software and do not match manufacturing specifications.
Dimensions in parentheses are in millimeters.

See Pages 4 Thru 6 for Accessories

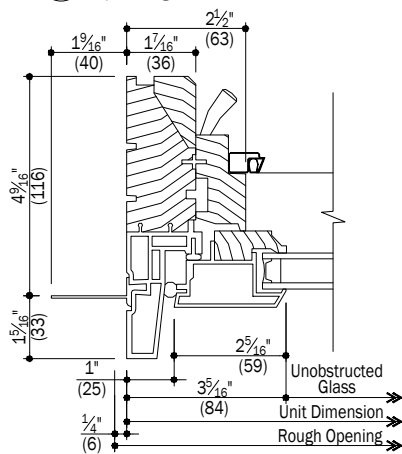
Double-Hung Windows



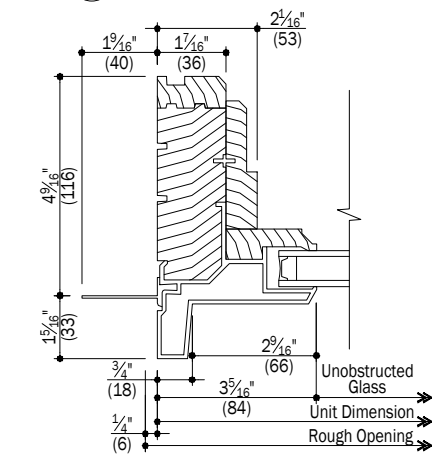
A Head
3 Operating



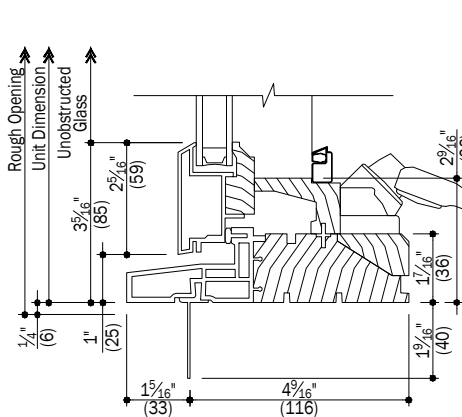
D Head
3 Fixed



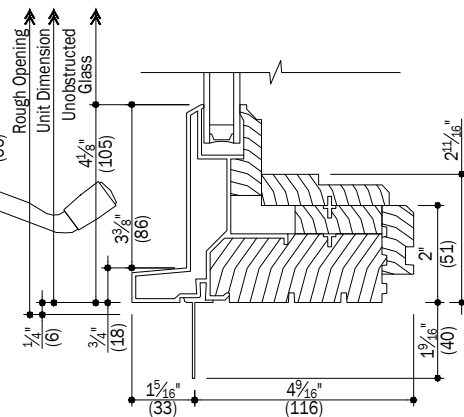
B Jamb
3 Operating



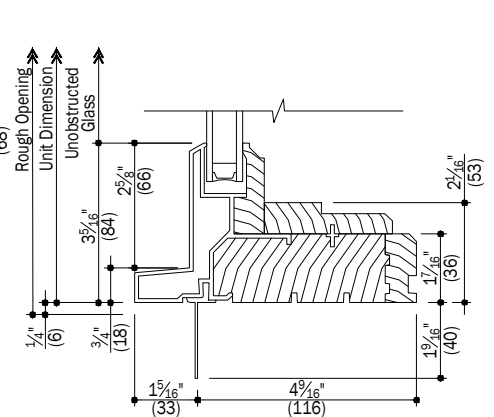
E Jamb
3 Fixed



C Sill
3 Operating



F Sill
3 Fixed



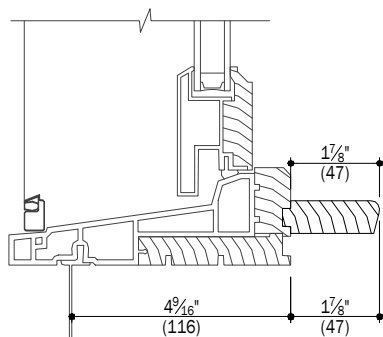
G Sill
3 Fixed

Notes:

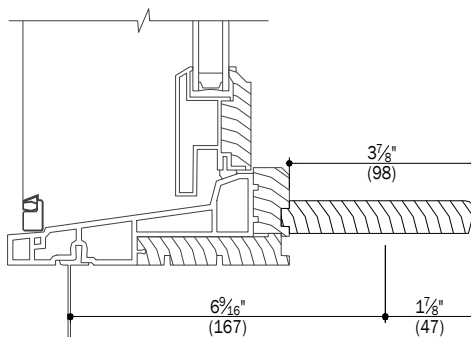
Details have been optimized for use in architectural software and do not match manufacturing specifications. Dimensions in parentheses are in millimeters.

See Pages 4 Thru 6 for Accessories

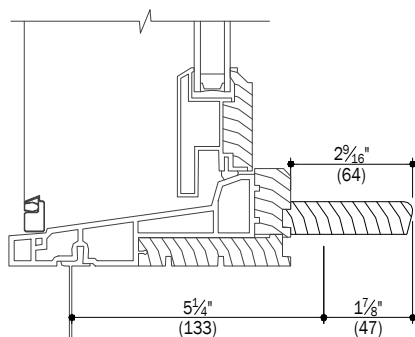
Double-Hung Windows Accessories



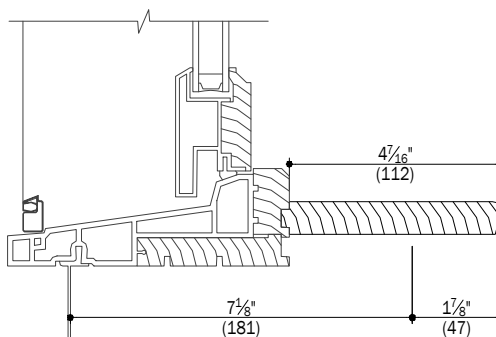
A Stool
4 4 9/16" Wall Depth



C Stool
4 6 9/16" Wall Depth



B Stool
4 5 1/4" Wall Depth

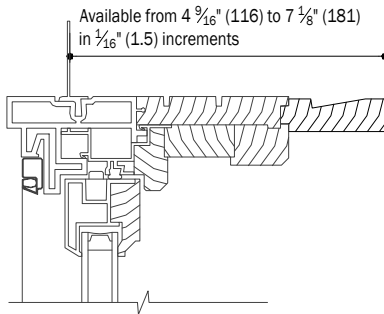


D Stool
4 7 1/8" Wall Depth

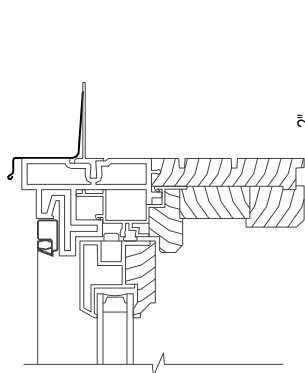
Notes:

Details have been optimized for use in architectural software and do not match manufacturing specifications.
Dimensions in parentheses are in millimeters.

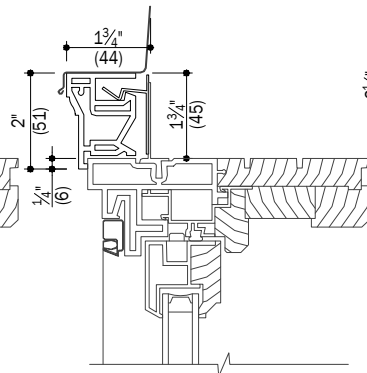
Date: 03/29/16
Scale: 3" (76) = 1' (305)



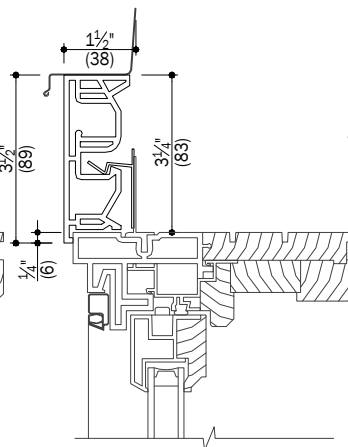
A
5 Extension Jamb



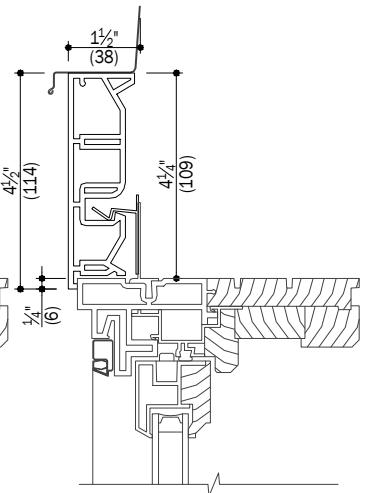
B
5 Drip Cap



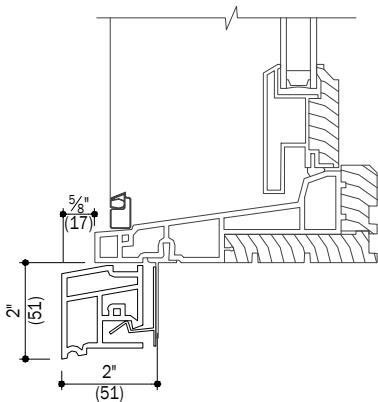
C
5 2" Brick Mould



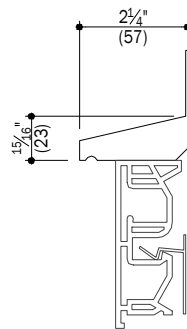
D
5 3 1/2" Flat Casing



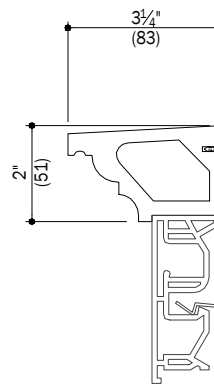
E
5 4 1/2" Flat Casing



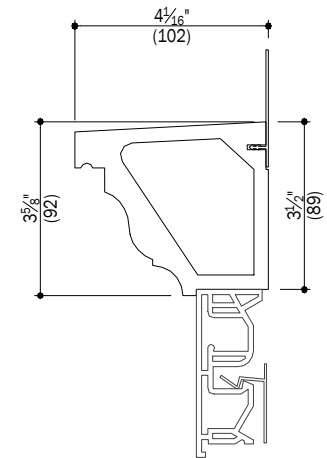
F
5 Sill Nose



G
5 Decorative Drip Cap



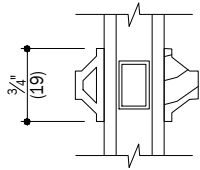
H
5 2" Cornice



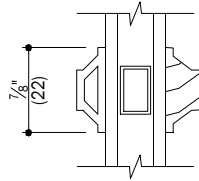
I
5 3 5/8" Cornice

Notes:

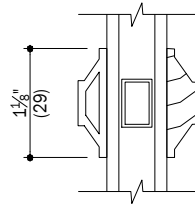
Details have been optimized for use in architectural software and do not match manufacturing specifications.
Dimensions in parentheses are in millimeters.



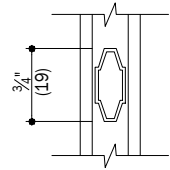
A
6 3/4" Full Divided Light



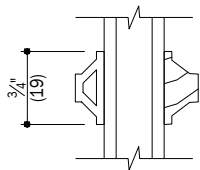
E
6 7/8" Full Divided Light



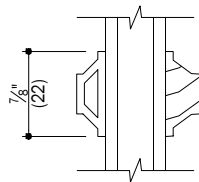
J
6 1 1/8" Full Divided Light



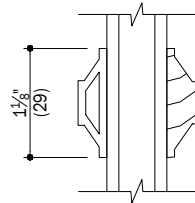
M
6 3/4" Finelight



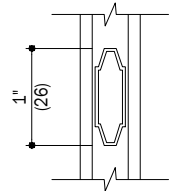
B
6 3/4" Simulated Divided Light
Removable interior is available



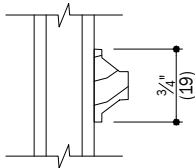
F
6 7/8" Simulated Divided Light
Removable interior is available



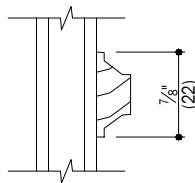
K
6 1 1/8" Simulated Divided Light
Removable interior is available



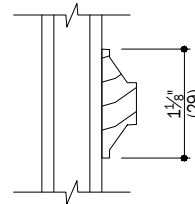
N
6 1" Finelight



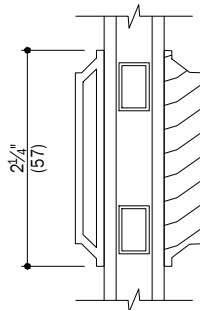
C
6 3/4" Removable Interior Grille



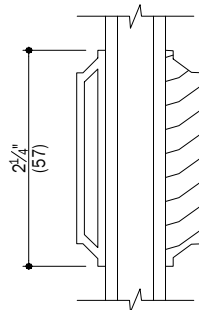
G
6 7/8" Removable Interior Grille



L
6 1 1/8" Removable Interior Grille



D
5 2 1/4" Full Divided Light
Simulated check rail
Only available on picture units



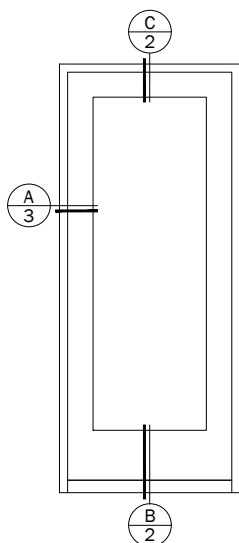
H
5 2 1/4" Simulated Divided Light
Simulated check rail
Only available on picture units

Notes:

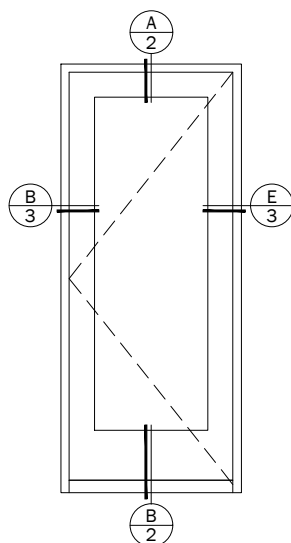
Details have been optimized for use in architectural software and do not match manufacturing specifications.
Dimensions in parentheses are in millimeters.

Date: 03/29/16
Scale: 6" (152) = 1' (305)

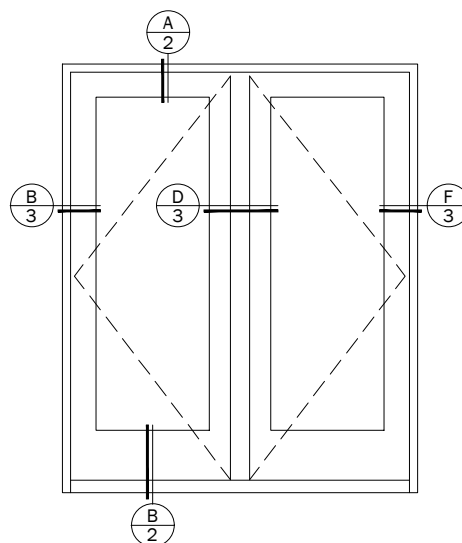
Frenchwood® Hinged Inswing Patio Doors
4 ⁹/₁₆" Frame Depth



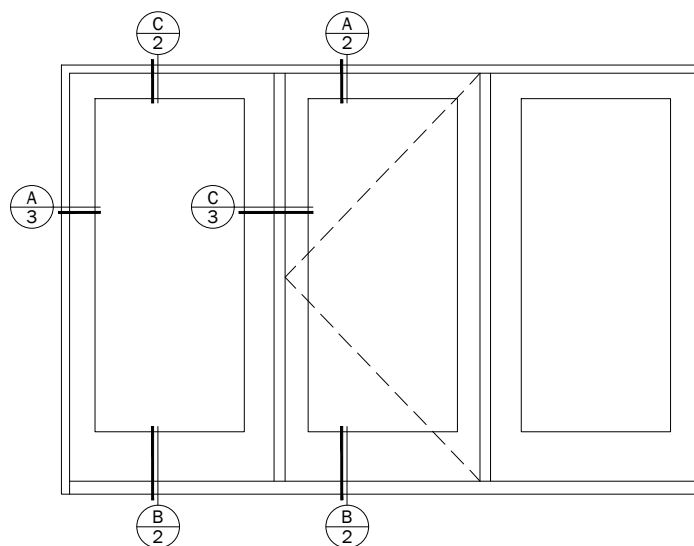
Frenchwood®
Hinged Patio Door - Inswing
(1-Panel)



Frenchwood®
Hinged Patio Door - Inswing
(1-Panel)



Frenchwood®
Hinged Patio Door - Inswing
(2-Panel)



Frenchwood®
Hinged Patio Door - Inswing
(3-Panel)

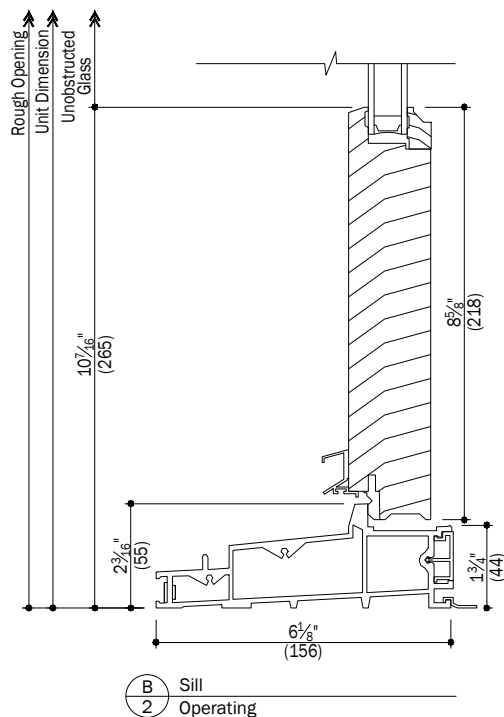
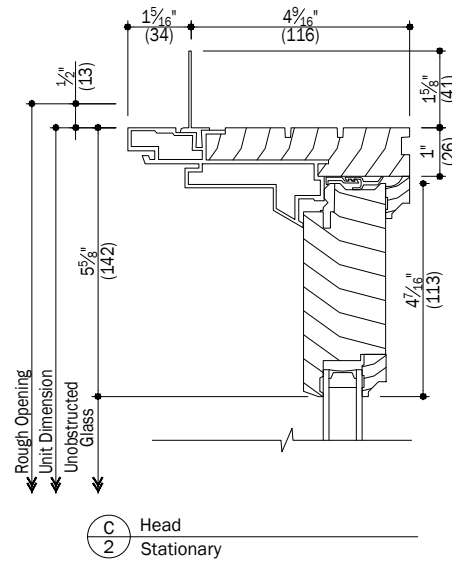
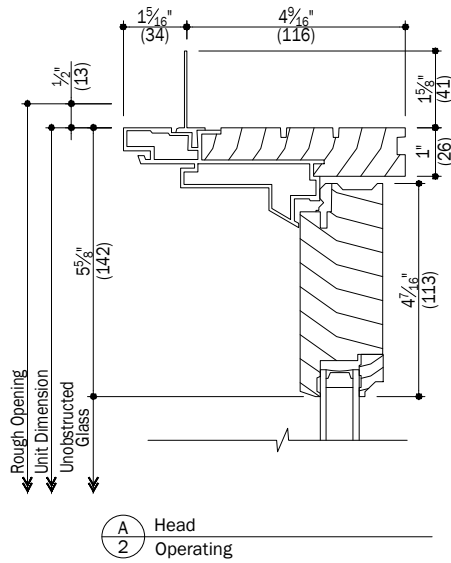
Notes:

Details have been optimized for use in architectural software and do not match manufacturing specifications.
Dimensions in parentheses are in millimeters.

See Pages 4 Thru 8 for Accessories

Date: 03/29/16
Scale: None

Frenchwood® Hinged Inswing Patio Doors
4 $\frac{9}{16}$ " Frame Depth



Notes:

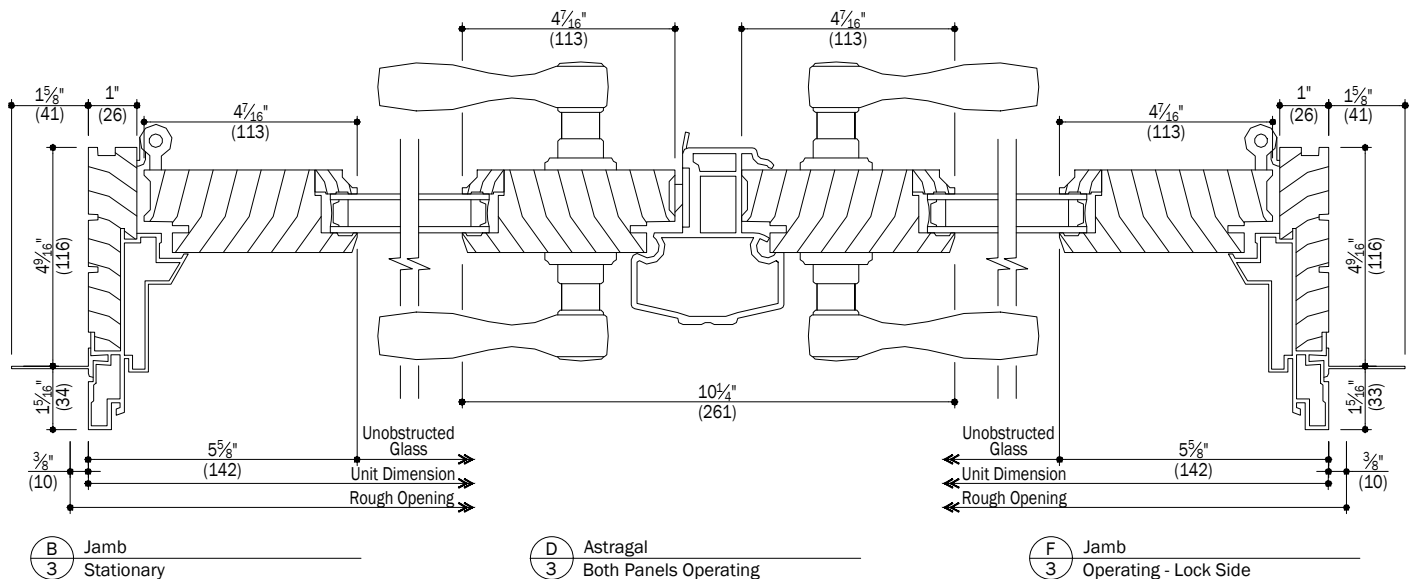
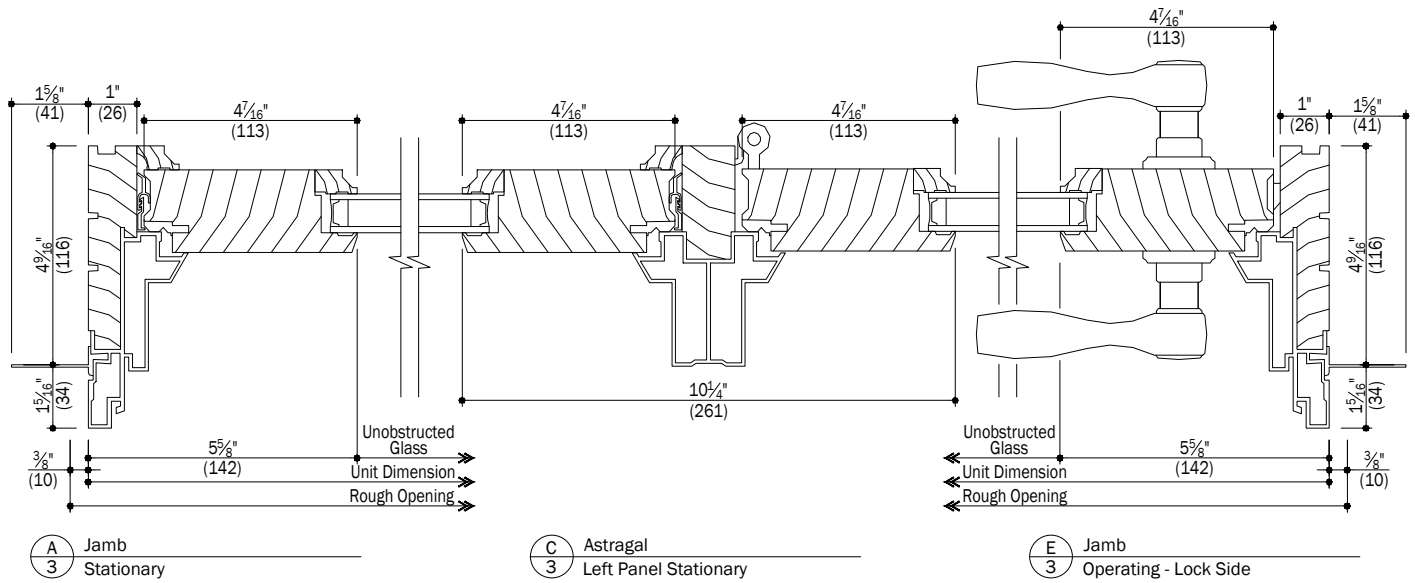
Details have been optimized for use in architectural software and do not match manufacturing specifications.
Dimensions in parentheses are in millimeters.

See Pages 4 Thru 8 for Accessories

Date: 03/29/16
Scale: 3" (76) = 1' (305)

A-Series

Frenchwood® Hinged Inswing Patio Doors 4 9/16" Frame Depth

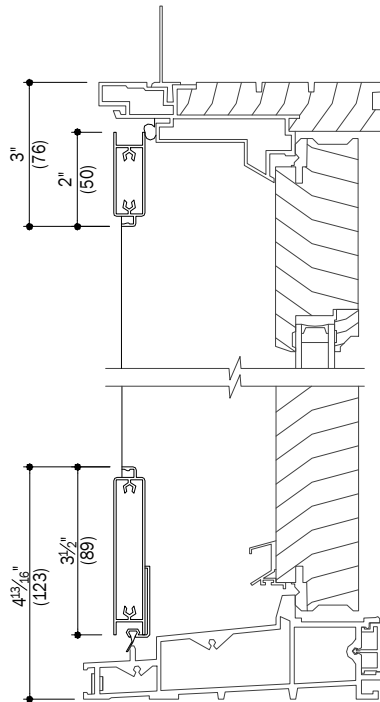


Notes:

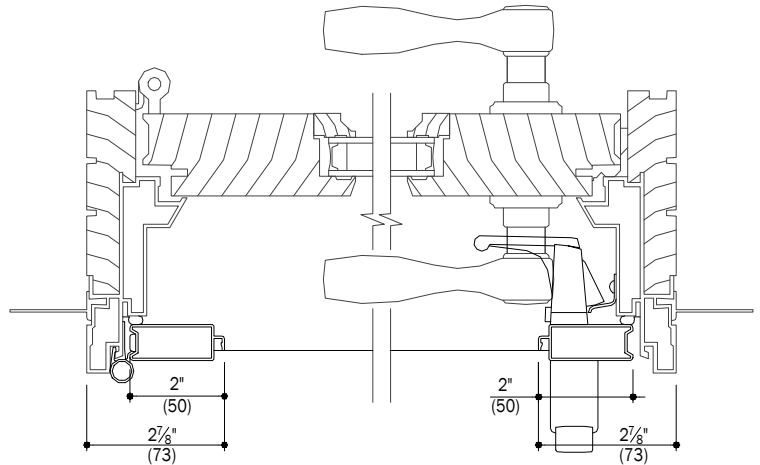
Details have been optimized for use in architectural software and do not match manufacturing specifications.
Dimensions in parentheses are in millimeters.

See Pages 4 Thru 8 for Accessories

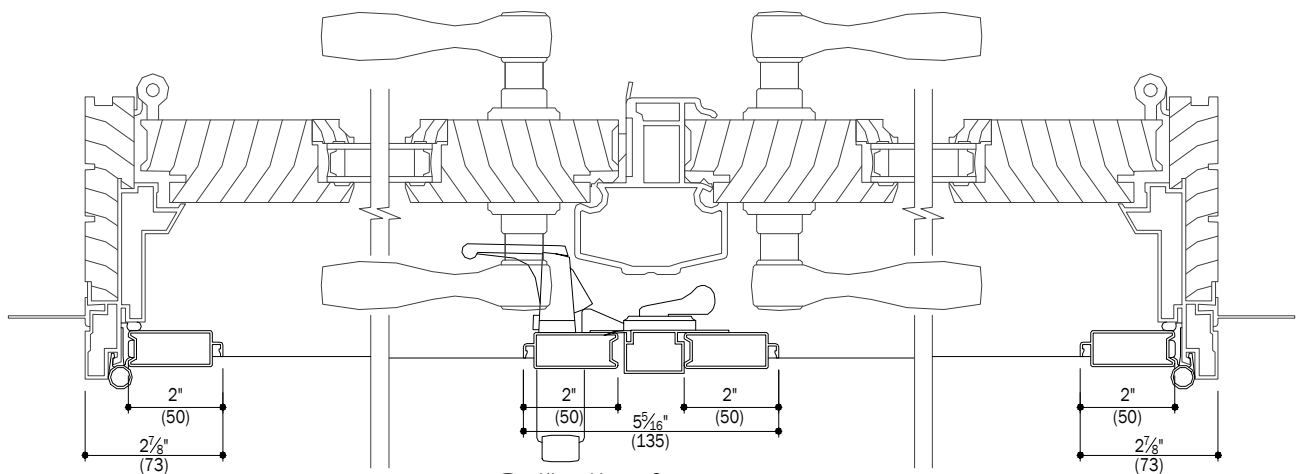
Frenchwood® Hinged Inswing Patio Doors
4 ⁹/₁₆" Frame Depth
Accessories



A
4 Hinged Insect Screen



C
4 Hinged Insect Screen
Single Door



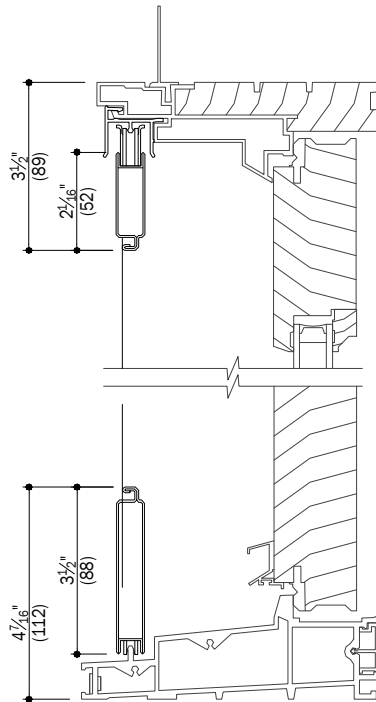
B
4 Hinged Insect Screen
Double Door

Notes:

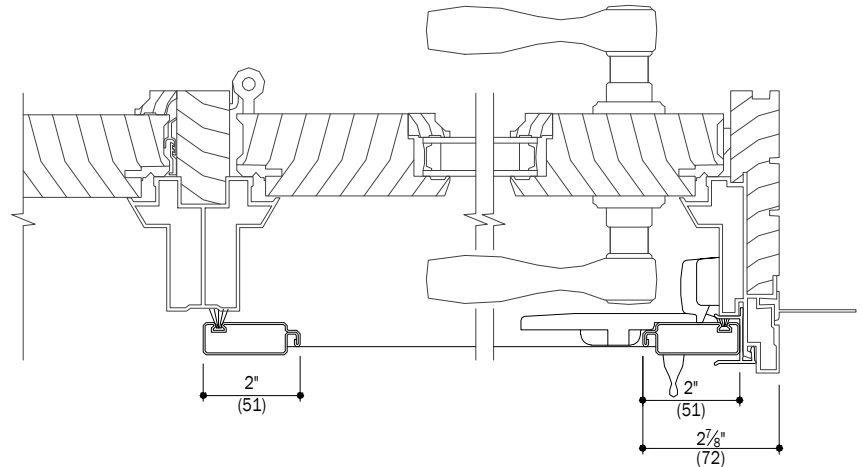
Details have been optimized for use in architectural software and do not match manufacturing specifications.
Dimensions in parentheses are in millimeters.

Date: 03/29/16
Scale: 3" (76) = 1' (305)

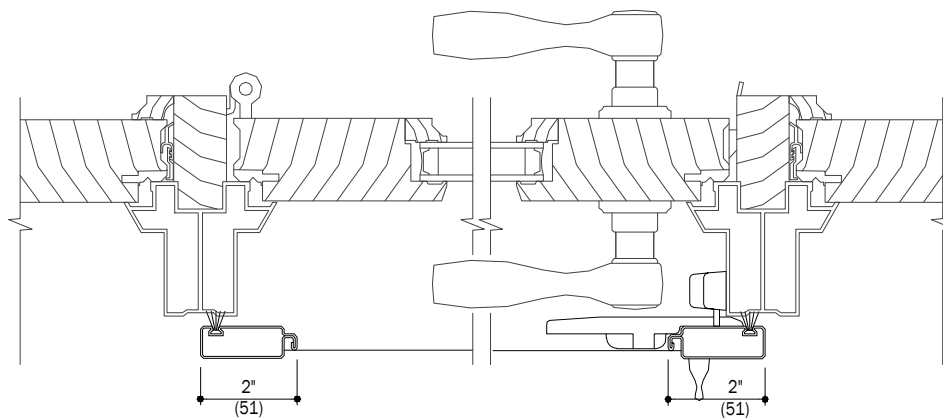
Frenchwood® Hinged Inswing Patio Doors
4 ⁹/₁₆" Frame Depth
Accessories



A
5 Single Gliding Insect Screen
For Center Hinged 2-Panel Doors
and 3-Panel Doors



C
5 Single Gliding Insect Screen
Center hinged 2-panel door or a 3-panel door
with a center stationary panel.



B
5 Single Gliding Insect Screen
3-panel door with center
operating panel.

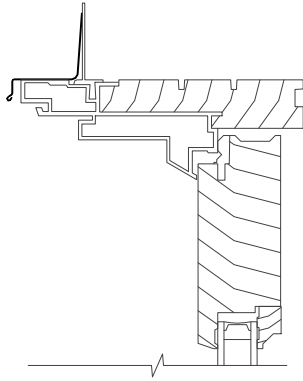
Notes:

Details have been optimized for use in architectural software and do not match manufacturing specifications.
Dimensions in parentheses are in millimeters.

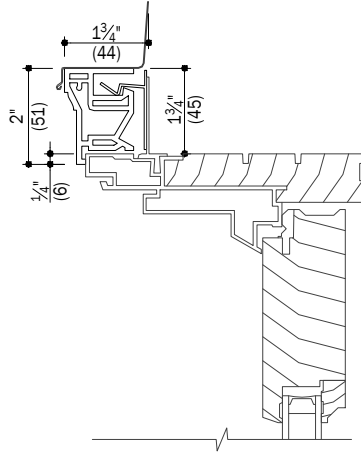
Date: 03/29/16
Scale: 3" (76) = 1' (305)

A-Series

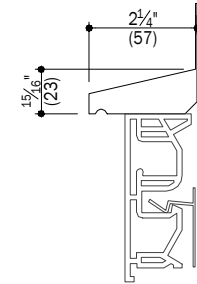
Frenchwood® Hinged Inswing Patio Doors 4 9/16" Frame Depth Accessories



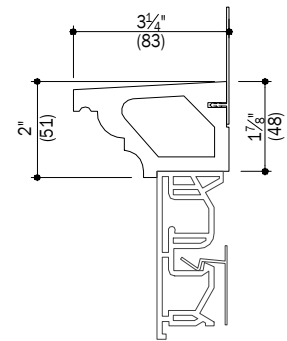
A
6 Drip Cap



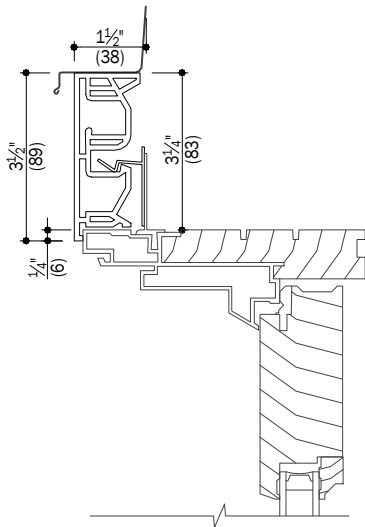
C
6 2" Brick Mould



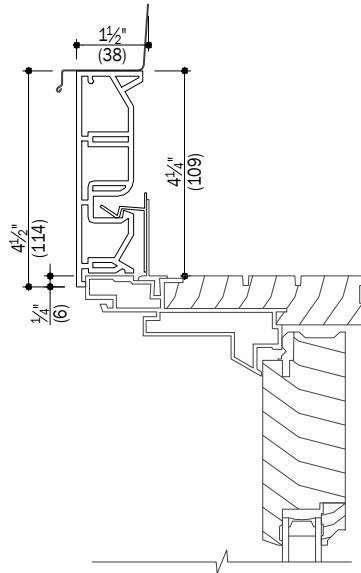
E
6 Decorative Drip Cap



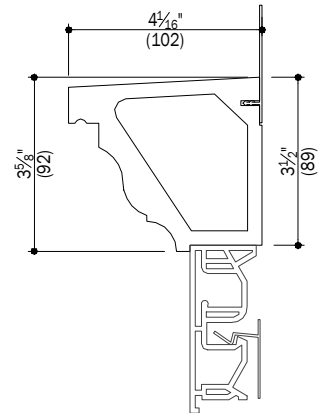
F
6 2" Cornice



B
6 3 1/2" Flat Casing



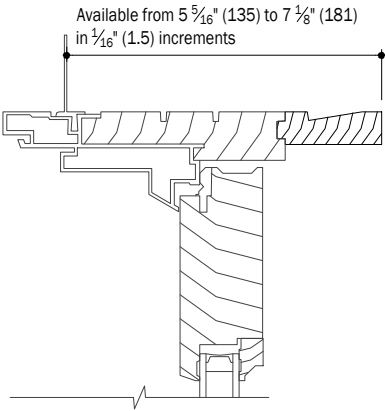
D
6 4 1/2" Flat Casing



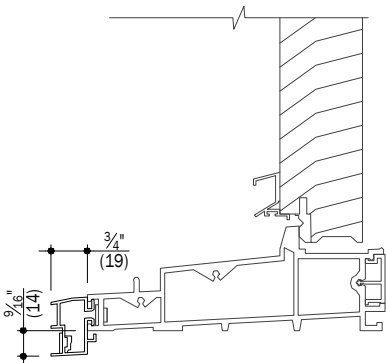
G
6 3 5/8" Cornice

Notes:

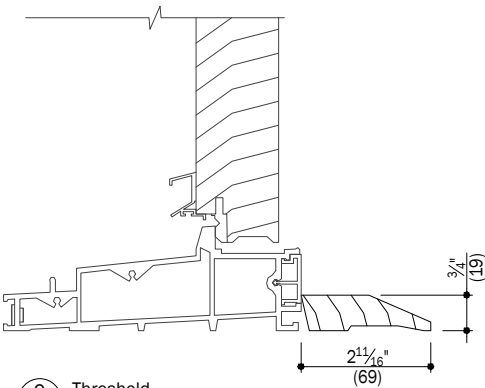
Details have been optimized for use in architectural software and do not match manufacturing specifications.
Dimensions in parentheses are in millimeters.



A Extension Jamb
7



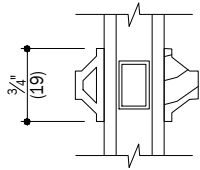
B Drop-Nose Channel
7 Performance Grade (PG) Upgrade



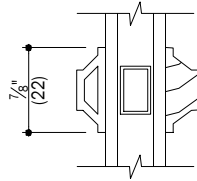
C Threshold
7

Notes:
Details have been optimized for use in architectural software and do not match manufacturing specifications.
Dimensions in parentheses are in millimeters.

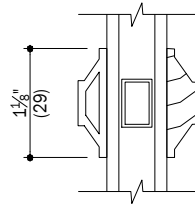
Frenchwood® Hinged Inswing Patio Doors
4 ⁹/₁₆" Frame Depth
Accessories



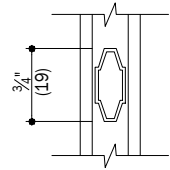
A
8 3/4" Full Divided Light



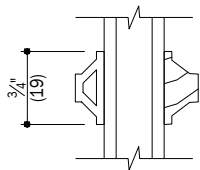
E
8 7/8" Full Divided Light



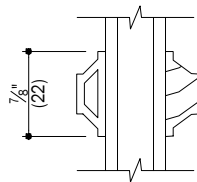
J
8 1 1/8" Full Divided Light



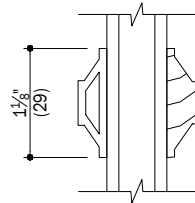
M
8 3/4" Finelight



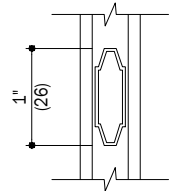
B
8 3/4" Simulated Divided Light
Removable interior is available



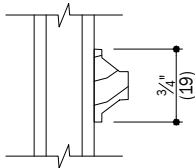
F
8 7/8" Simulated Divided Light
Removable interior is available



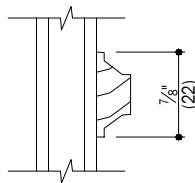
K
8 1 1/8" Simulated Divided Light
Removable interior is available



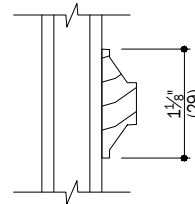
N
8 1" Finelight



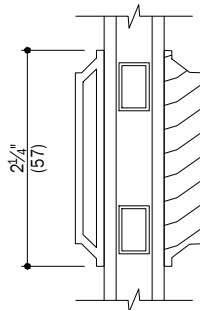
C
8 3/4" Removable Interior Grille



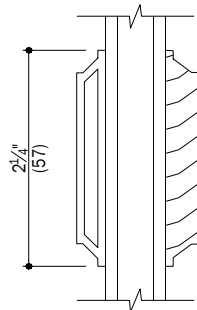
G
8 7/8" Removable Interior Grille



L
8 1 1/8" Removable Interior Grille



D
8 2 1/4" Full Divided Light
Simulated check rail



H
8 2 1/4" Simulated Divided Light
Simulated check rail

Notes:

Details have been optimized for use in architectural software and do not match manufacturing specifications.
Dimensions in parentheses are in millimeters.

Date: 03/29/16
Scale: 3" (76) = 1' (305)

Greystone Gold Estate Panel

Item # WSP-GGES

realstone **SYSTEMS™**
Inspiring. Timeless. Enduring.



DESCRIPTION

Estate Stone speaks of old world churches and cathedrals, castles and country manors. Stately mansions in hidden hillsides with sumptuous grounds. Bringing the rustic appearance and raw beauty of natural stacked stone of the European countryside to our Western landscape. The timeless charm of Estate Stone instantly transforms a structure into an inspired treasure. Estate stone panels come in a fingered configuration and are backed with a stainless steel mesh making installation seamless, easy and fast compared to laying loose stone . The beautiful neutral color of Berkshire Buff can fit in with warm or cool tones due to its subtle coloring and intriguing rose gold veining. Paired with directional lighting, the crystalline composition of the natural stone will give off a gentle sparkle.

Pair with [Greystone Gold Corners](#), Hearths, Wall Caps and Sills for a full project solution. [See the full collection here.](#)

PRODUCT SPECS

Material Type	Quartzite
Finish	Splitface
Format	Fingered Panel
Usage	Residential, Commercial, Interior, Walls, Exterior
Size	8"x18" 1 sq. ft.
Matching Products	Corner
Avg. Unit Thickness	.8"-1.6"
Avg. Unit Weight	12-13 lbs.
Avg. SF. Per Box	4
Pieces Per Box	4

ADDITIONAL INFORMATION

"Green" Attributes	• VOC free • ISO 9001 compliant components
LEED	• EA 4.2 • ID 1.1
Quality Standards	• +/- 2mm size variance • +/- 1lbs weight variance • tight color range • no adhesive seeping to front of panel • properly packaged for portability and protection

INSTALLATION & CARE

Installation	The Realstone System is a jointless, dry-stacked installation where panels and corners fit tightly together without grouted joints. A polymer modified mortar and full coverage is advised. Always follow your local building codes and best practices from TCNA. For installation products refer to our resource page at www.resources.com visit www.resources.com .
Maintenance	No Alkaline or Acid based cleaners should be used on natural stone. Use PH neutral cleaning products only. For sealing and cleaning products refer to our resource page at www.resources.com

STATEMENT COLLECTION™

Make your next home stand out with our Statement Collection™ products. Carefully curated by our design experts specifically for your market, the collection brings together the most popular James Hardie ColorPlus® siding and trim styles, textures, and colors. This stunning selection is locally stocked and designed for simplicity - making it easier than ever to get a beautiful, long-lasting home exterior.

ColorPlus® Technology

Plank, Panel, Shingle and Batten Color Offering

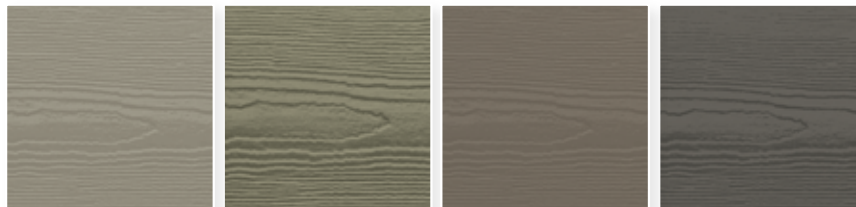


ARCTIC WHITE

COBBLE STONE

NAVAJO BEIGE

KHAKI BROWN

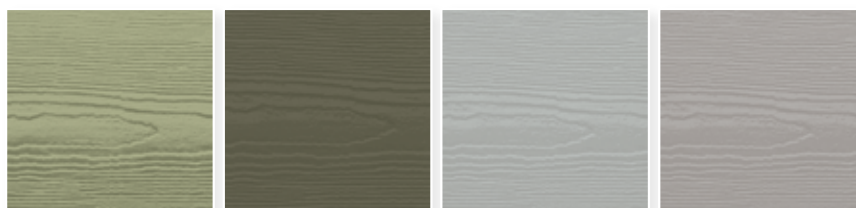


MONTEREY TAUPE

WOODSTOCK BROWN

TIMBER BARK

RICH ESPRESSO



HEATHERED MOSS

MOUNTAIN SAGE

LIGHT MIST

PEARL GRAY

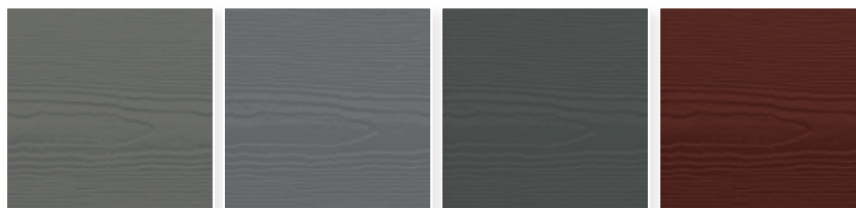


GRAY SLATE

BOOTHBAY BLUE

EVENING BLUE

DEEP OCEAN



AGED PEWTER

NIGHT GRAY

IRON GRAY

COUNTRYLANE RED

Trim Color Offering



ARCTIC
WHITE

COBBLE
STONE

KHAKI
BROWN

MONTEREY
TAUPE

TIMBER
BARK

IRON
GRAY

Colors shown are as accurate as printing methods will permit.
Please see actual product sample for true color.

HardiePlank®

Thickness 5/16 in

Length 12 ft planks

SELECT CEDARMILL® & SMOOTH

Width	5.25 in	6.25 in	7.25 in	8.25 in	9.25 in*
Exposure	4 in	5 in	6 in	7 in	8 in
Prime Pcs/Pallet	360	308	252	230	190
ColorPlus Pcs/Pallet	324	280	252	210	—
Pcs/Sq	25.0	20.0	16.7	14.3	12.5

SELECT CEDARMILL®



Width	5.25 in	6.25 in	7.25 in	8.25 in	9.25 in*
STATEMENT COLLECTION™		✓		✓	
DREAM COLLECTION™	✓	✓	✓	✓	
PRIME	✓	✓	✓	✓	✓

SMOOTH



Width	5.25 in	6.25 in	7.25 in	8.25 in	9.25 in*
STATEMENT COLLECTION™		✓		✓	
DREAM COLLECTION™	✓	✓	✓	✓	
PRIME	✓	✓	✓	✓	

BEADED CEDARMILL®

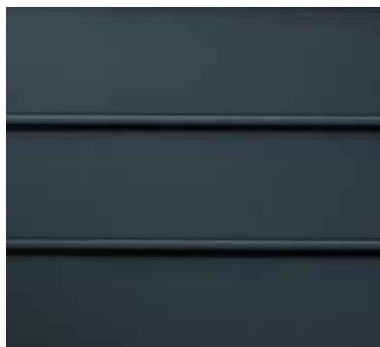


BEADED CEDARMILL® & BEADED SMOOTH

Width	8.25 in
Exposure	7 in
ColorPlus Pcs/Pallet	210
Pcs/Sq	14.3

STATEMENT COLLECTION™	_____
DREAM COLLECTION™	✓
PRIME	_____

BEADED SMOOTH

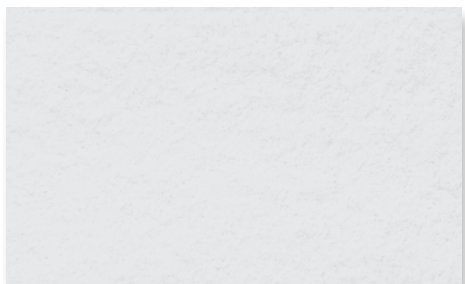


*9.25 in widths do not feature the drip edge

HardieTrim®

Length 12 ft boards

NT3® BOARDS SMOOTH



4/4 SMOOTH

Thickness	.75 in				
Width	3.5 in	5.5 in	7.25 in	9.25 in	11.25 in
ColorPlus Pcs/Pallet	312	208	156	104	104

STATEMENT COLLECTION™	✓	✓	✓		✓
DREAM COLLECTION™	✓	✓	✓	✓	✓
PRIME					

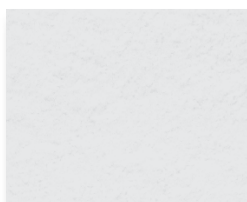
5/4 SMOOTH

Thickness	1 in					
Width	3.5 in	4.5 in	5.5 in	7.25 in	9.25 in	11.25 in
ColorPlus Pcs/Pallet	240	200	160	120	80	80

STATEMENT COLLECTION™	✓	✓	✓	✓		✓
DREAM COLLECTION™	✓	✓	✓	✓	✓	✓
PRIME						

BATTEN BOARDS

SMOOTH



RUSTIC GRAIN®



SMOOTH & RUSTIC GRAIN®

Thickness	.75 in	STATEMENT COLLECTION™	✓
Width	2.5 in	DREAM COLLECTION™	✓
Prime Pcs/Pallet	190	PRIME	✓
ColorPlus Pcs/Pallet	437		



7501 THERMAL SASH

DOOR SPECIFICATIONS (AS SHOWN):

Wood Species: Fir

Glass: Clear

Profile: Ovolo Sticking

Panel Type: 1-7/16" Innerbond DHRP

Rough opening needs to be 2" wider and 2 1/2" taller than your door.

STANDARD OPTIONS

Quantity

Change Quantity

Stain or Paint?

[view more](#)

☒ Stain ☐ Paint

Wood Species

Slab Width

[view more](#)

Feet	Inches	Fraction
<input type="text" value="3"/>	<input type="text" value="0"/>	<input type="text" value="0"/>

Slab Height

[view more](#)

<input type="text" value="8"/>	<input type="text" value="0"/>	<input type="text" value="0"/>
--------------------------------	--------------------------------	--------------------------------

Thickness

[view more](#)

IG Glass, Option 1

[view more](#)

Add Low-E

☐ Yes ☒ No

Film

[view more](#)

Yes

Sticking Profile

Panel Type

Groove Type

Stile Width

[view more](#)

UltraBlock

Yes

[view more](#)

WaterBarrier

☐ Yes ☒ No

[view more](#)

DESIGN AND CONSTRUCTION ALTERATIONS

Dutch

None 

Modified Mortise & Tenon

☐ Yes ☒ No

[view more](#)

Two-Piece Laminated Stiles
and Rails

☐ Yes ☒ No

[view more](#)

Engineered Stiles and Rails
with 1/4" Veneer

☐ Yes ☒ No

[view more](#)

Mouldings

None 

[view more](#)

FINISHING TOUCHES

Priming

☐ Yes ☒ No

[view more](#)

Mahogany (Sapele)



This represents the wood species that you selected in an 82 door design.



Timberline[®] HDZ[™]

High Definition[®] Shingles



As featured on *This Old House*, the Timberline[®] HDZ[™] Shingles installed here are Oyster Gray.

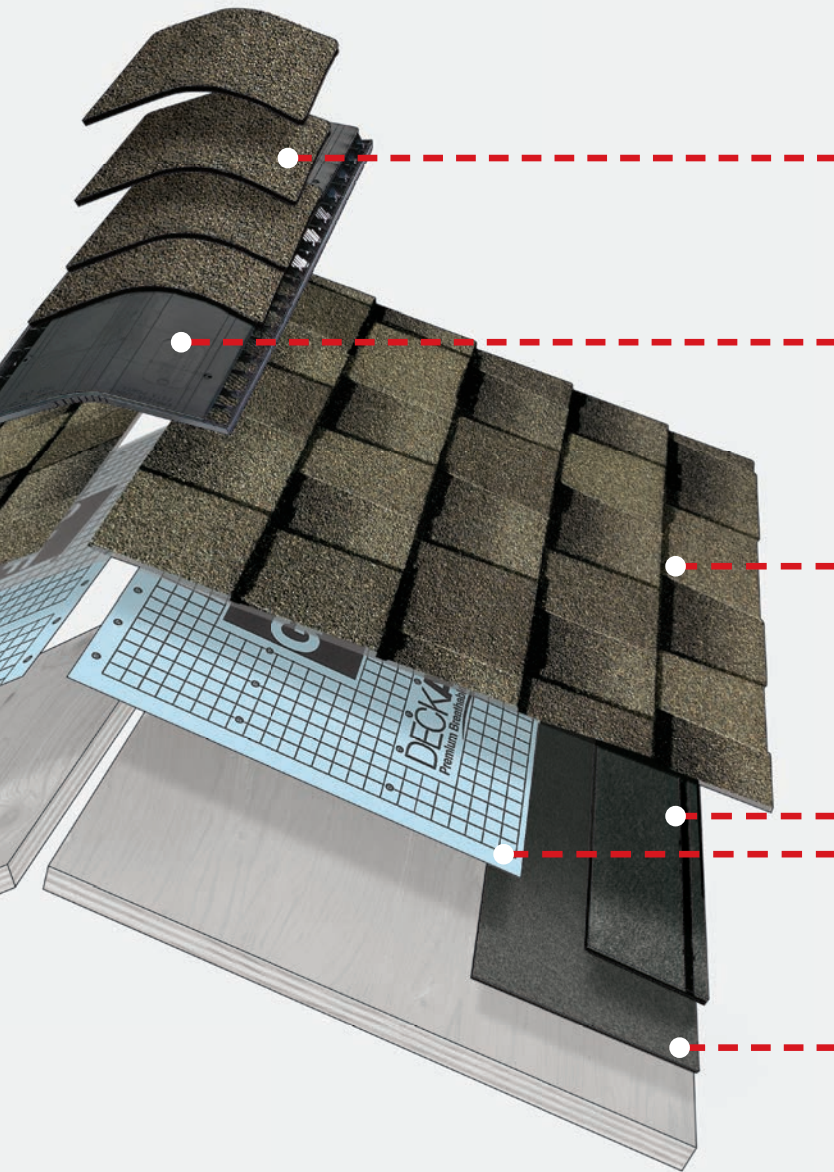
Millions of families have found shelter and peace of mind under a Timberline[®] roof.

And now, a good thing just got even better.

We protect what matters most[™]



The GAF Lifetime¹ Roofing System



Ridge Cap Shingles

The finishing touch that helps defend against leaks at the hips and ridges



Cobra[®] Attic Ventilation

Helps reduce attic moisture and heat



Lifetime Shingles¹

Beautify and protect for years to come



Starter Strip Shingles

Helps guard against shingle blow-offs



Roof Deck Protection

Helps shield the roof deck from moisture infiltration



Leak Barrier

Helps prevent leaks caused by wind-driven rain and ice dams

Install any GAF Lifetime¹ Shingle and at least 3 qualifying GAF Accessories and get a Lifetime¹ limited warranty on your qualifying GAF products plus

non-prorated coverage for the first 10 years. For even stronger coverage, ask your GAF factory-certified contractor² about enhanced GAF warranties.



¹ Lifetime refers to the length of warranty coverage provided and means as long as the original individual owner(s) of a single-family detached residence [or eligible second owner(s)] owns the property where the qualifying GAF products are installed. For other owners/structures, Lifetime coverage is not applicable. Lifetime coverage on shingles requires use of GAF Lifetime shingles only. See *GAF Shingle & Accessory Limited Warranty* for complete coverage and restrictions. Lifetime coverage on shingles and accessories requires use of any GAF Lifetime Shingle and at least 3 qualifying GAF accessories. See *GAF Roofing System Limited Warranty* for complete coverage and restrictions. Visit gaf.com/LRS for qualifying GAF products. For installations not eligible for the *GAF Roofing System Limited Warranty*, see the *GAF Shingle & Accessory Limited Warranty*.

² Contractors enrolled in GAF certification programs are not employees or agents of GAF, and GAF does not control or otherwise supervise these independent businesses. Contractors may receive benefits, such as loyalty rewards points and discounts on marketing tools from GAF for participating in the program and offering GAF enhanced warranties, which require the use of a minimum amount of GAF products.



Barkwood

The neutral brown Barkwood emulates wood and coordinates well with warm colors like beige, taupe, cream, gold, and yellow.

Note: It is difficult to reproduce the color clarity and actual color blends of these products. Before selecting your color, please ask to see several full-size shingles.

FLUTED STANDARD WIDTH 22X143X3200MM

For a thicker grooved aesthetic, the fluted composite decking boards come in a range of popular colours. The fluted style board is a sophisticated take on the classic grooved board and is great for both residential and commercial projects.

SAFEGUARD PROFILE



ANTHRACITE FLUTED

HO912

Composite Decking; Fluted; Plank; Clip Fixing; Square Edge; 25 Clips per sq.m; Supplied FOC

Thickness	22mm
Width	143mm
Length	3200mm

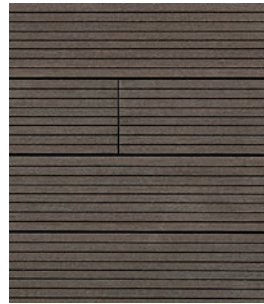


CHOCOLATE FLUTED

HO910

Composite Decking; Fluted; Plank; Clip Fixing; Square Edge; 25 Clips per sq.m; Supplied FOC

Thickness	22mm
Width	143mm
Length	3200mm



NEW OAK FLUTED

HO918

Composite Decking; Fluted; Plank; Clip Fixing; Square Edge; 25 Clips per sq.m; Supplied FOC

Thickness	22mm
Width	143mm
Length	3200mm



VULCAN FLUTED

HO914

Composite Decking; Fluted; Plank; Clip Fixing; Square Edge; 25 Clips per sq.m; Supplied FOC

Thickness	22mm
Width	143mm
Length	3200mm



FLUTED STANDARD WIDTH 143MM

ANTHRACITE FASCIA



HO966

Composite Fascia

Thickness 11mm
Width 100mm
Length 1500mm

CHOCOLATE FASCIA

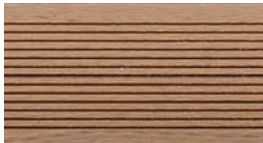


HO964

Composite Fascia

Thickness 11mm
Width 100mm
Length 1500mm

NEW OAK FASCIA



HO968

Composite Fascia

Thickness 11mm
Width 100mm
Length 1500mm

VULCAN FASCIA

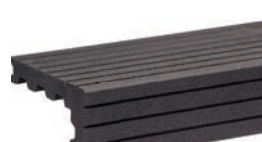


HO960

Composite Fascia

Thickness 11mm
Width 100mm
Length 1500mm

ANTHRACITE NOSING FLUTED



HO972

Can be installed either way

Thickness 22mm
Width 133mm/64mm
Length 1500mm

CHOCOLATE NOSING FLUTED



HO970

Can be installed either way

Thickness 22mm
Width 133mm/64mm
Length 1500mm

NEW OAK NOSING FLUTED

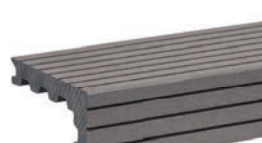


HO978

Can be installed either way

Thickness 22mm
Width 133mm/64mm
Length 1500mm

VULCAN NOSING FLUTED



HO974

Can be installed either way

Thickness 22mm
Width 133mm/64mm
Length 1500mm