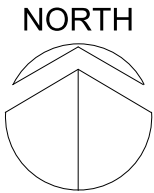




AERIAL SITE PLAN

NOT TO SCALE



DESIGN SPECIFICATIONS			
NYS Building Code 2020			
ASCE	7-16	Minimum Design Loads for Buildings & Other Structures	
ACI	318-14	Building Code Requirements for Structural Concrete	
ANSI/AISC	360-16	Specification for Structural Steel Buildings	
DESIGN LOADS			
Wind	V =	115 mph	
Exposure	B		
Risk Cat.	II		
Grnd. Snow	Pg =	30 psf	

LOOK

DINE-IN CINEMAS

Design #

0629849AR3

Sheet

1 of 6

Client

Look Cinemas VII, LLC

Address

1 Hamilton St.
Dobbs Ferry, NY 10522

Acct. Rep.
Coordinator

DEBBIE MOLTZ
JUSTIN BARNABEE

Designer

JOEL GONZALES

Date

8/19/2021

Approval / Date

Client

Sales

Estimating

Art

Engineering

Landlord

Revision/Date

R1(8/25/21)JGZ: Revise per customer notes.
R2(8/30/21)JGZ: Checking code.
R3(8/21)JGZ: Remove blade sign - add SF to sign A

CHANDLER
SIGNS

chandler signs.com

National Headquarters

14201 Sovereign Road #101
Fort Worth, TX 76155
(214) 902-2000 Fax (214) 902-2044

San Antonio

17319 San Pedro Avenue
Suite 200
San Antonio, TX 78232
(210) 349-3804 Fax (210) 349-8724

Northeast US

2301 River Road, Suite 201
Louisville, KY 40206
(502) 897-9800 Cell (502) 554-2575

Georgia

111 Woodstone Place
Dawsonville, GA 30534
(678) 725-8852 Fax (210) 349-8724

South Texas

PO BOX 125 206 Doral Drive
Portland, TX 78374
(961) 563-5599 Fax (361) 643-6533

This drawing is the property of
Chandler Signs, LLC
All rights to its use for reproduction
are reserved by Chandler Signs, LLC

FINAL ELECTRICAL
CONNECTION BY
CUSTOMER

UL

THIS SIGN IS INTENDED TO BE INSTALLED
IN ACCORDANCE WITH ARTICLE 600 OF THE
NATIONAL ELECTRICAL CODE AND/OR OTHER
APPLICABLE LOCAL CODES. THIS INCLUDES
PROPER GROUNDING & BONDING OF THE SIGN.
SIGN WILL BEAR UL LABEL(S).

Design #

0629849AR3

Sheet 2 of 6

Client

Look Cinemas VII, LLC

Address

1 Hamilton St.
Dobbs Ferry, NY 10522

Acct. Rep. DEBBIE MOLTZ
Coordinator JUSTIN BARNABEE

Designer JOEL GONZALES

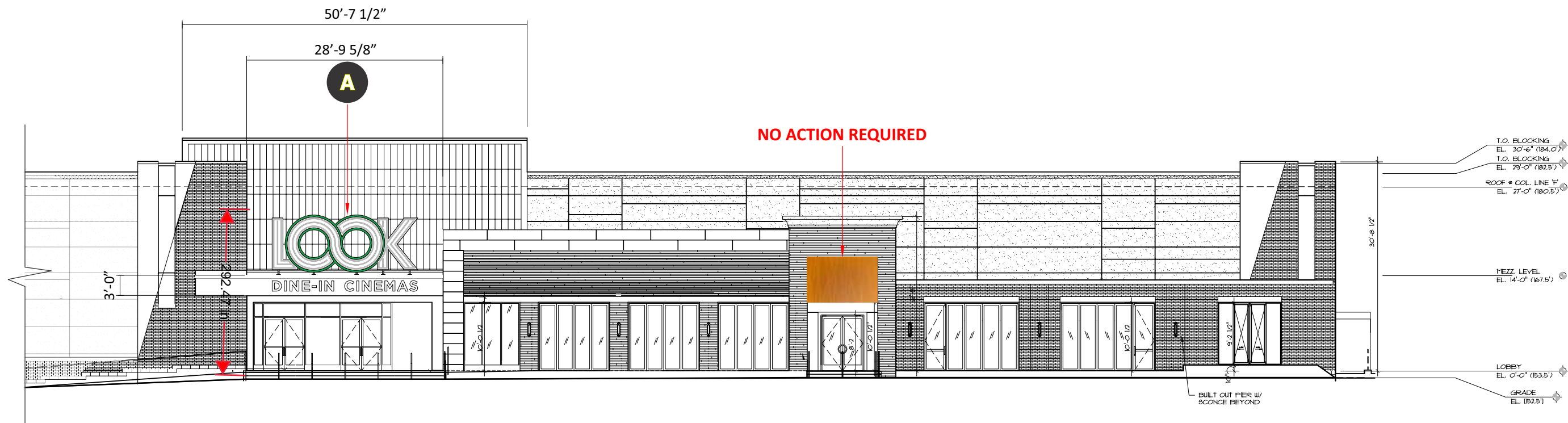
Date 8/19/2021

Approval / Date

Client	
Sales	
Estimating	
Art	
Engineering	
Landlord	

Revision/Date

R1(8/25/21)JGZ: Revise per customer notes.
R2(8/30/21)JGZ: Checking code.
R3(9/21/21)JGZ: Remove blade sign - add SF to sign A



A1 BUILDING C - EAST ELEVATION

SCALE: 1/16" = 1'-0"

NOTE: EXISTING SIGNAGE ALREADY REMOVED



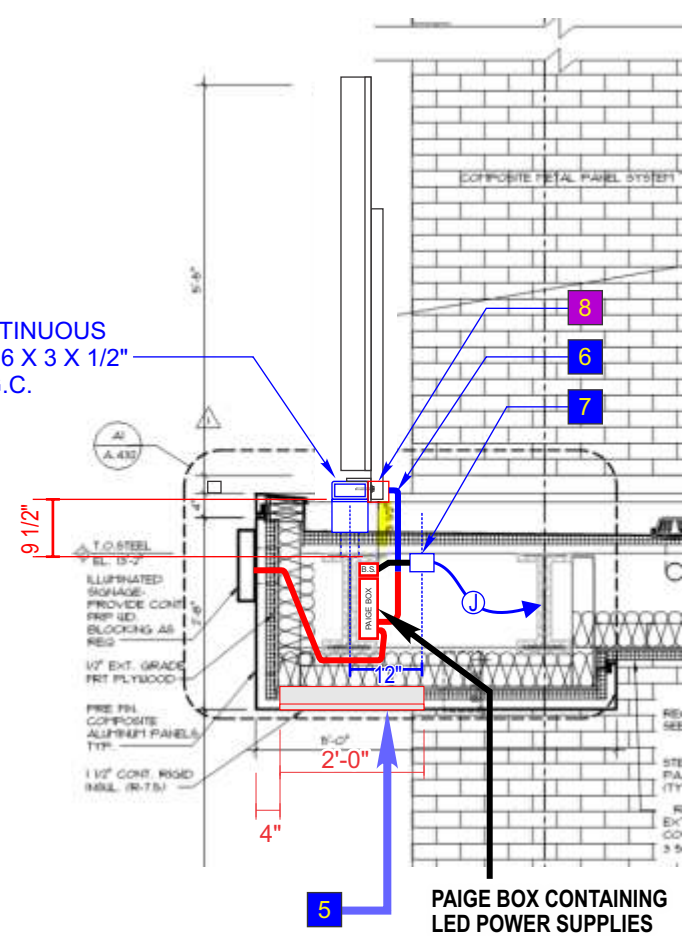
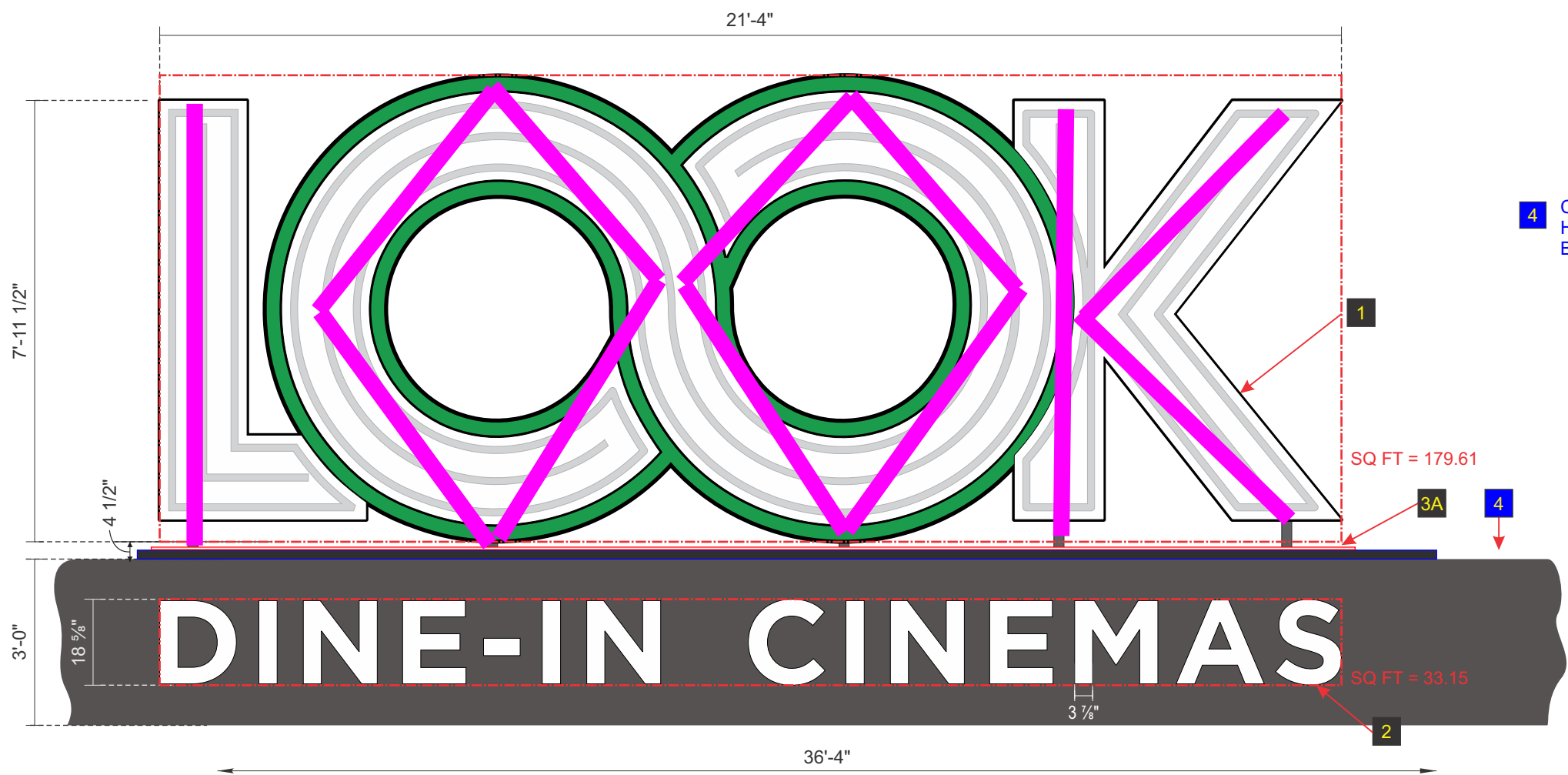
chandler signs.com

National Headquarters	14201 Sovereign Road #101 Fort Worth, TX 76155 (214) 902-2000 Fax (214) 902-2044
San Antonio	17319 San Pedro Avenue Suite 200 San Antonio, TX 78232 (210) 349-3804 Fax (210) 349-8724
Northeast US	2301 River Road, Suite 201 Louisville, KY 40206 (502) 897-9800 Cell (502) 554-2575
Georgia	111 Woodstone Place Dawsonville, GA 30534 (678) 725-8852 Fax (210) 349-8724
South Texas	PO BOX 125 206 Doral Drive Portland, TX 78374 (961) 563-5599 Fax (361) 643-6533

This drawing is the property of
Chandler Signs, LLC
All rights to its use for reproduction
are reserved by Chandler Signs, LLC

FINAL ELECTRICAL
CONNECTION BY
CUSTOMER

THIS SIGN IS INTENDED TO BE INSTALLED
IN ACCORDANCE WITH ARTICLE 600 OF THE
NATIONAL ELECTRICAL CODE AND/OR OTHER
APPLICABLE LOCAL CODES. THIS INCLUDES
PROPER GROUNDING & BONDING OF THE SIGN.
SIGN WILL BEAR UL LABEL(S).



A SECTION-A: DETAIL
Scale: 3/8"=1'-0"

PREVIOUS WO FOR THIS LOCATION: 0614052 "IPIC"

A

Sign Letter Detail

SCALE: 3/8" = 1'-0"

ONE (1) REQUIRED - MANUFACTURE AND INSTALL

212.76 SQ.FT. TOTAL

APPROX. SIGN WEIGHT : ±750 lbs.

1

"LOOK"

5" DEEP ALUM. OPEN LETTERS TO BE LIT WITH GE CONTOUR 6500K WHITE L.E.D.'S.
RETURNS ON THE OUTSIDE PAINTED WHITE.
RETURNS IN THE INSIDE AND BACKS TO BE PAINTED WHITE.
POWER SUPPLIES LOCATED INSIDE BACKGROUND PANEL.

3A

4" X 4" STEEL ANGLE SUPPORT PLATE WITH PRE-DRILLED MOUNTING HOLES.

3B

2" X 2" STEEL TUBE SUPPORTS WELDED TO 4" X 4" ANGLE. - PTD. MATTE BLACK.

4

ALL BY G.C. - HSS 6 X 3 X 1/2 (RECTANGULAR TUBE) ATTACHED TO PROTRUDING STEEL FROM CANOPY STRUCTURE - ALL PTD. MATTE BLACK.

2

"DINE-IN CINEMAS"

WHITE ACRYLIC FABRICATED LETTERS (3" RETURNS) WITH WHITE ACRYLIC FACES.
INTERNALLY ILLUMINATED W/ WHITE L.E.D.'S. - POWER SUPPLIES LOCATED INSIDE PAIGE BOXES BEHIND FASCIA

5

(2) TWO 24" X 24" ACCESS DOORS REQUIRED UNDER CANOPY - BY G.C. REQUIRED FOR ELECTRICAL ACCESS TO "THEATERS" LETTERS ON CANOPY FASCIA.

6

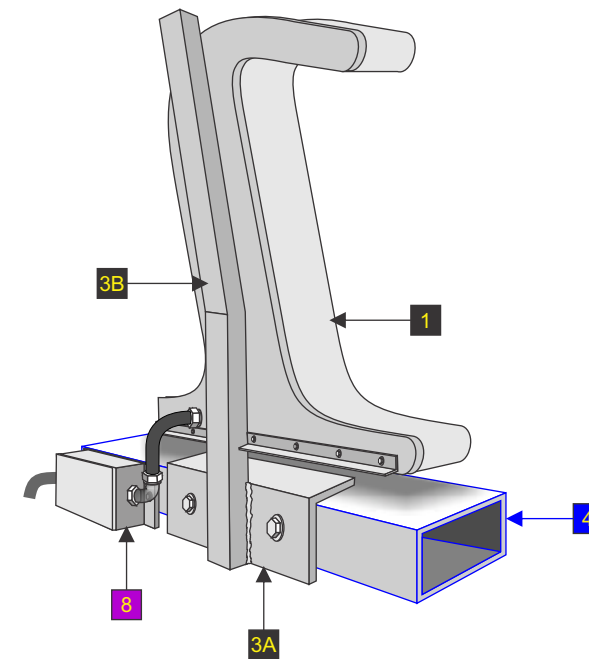
(1) ONE 1" DIA. SEALTITE CONDUIT THROUGH CANOPY ROOF. (FOR SECONDARY ELEC. RUN TO "IPIC" LETTERS) ON CANOPY. - BY G.C.

7

PRIMARY ELECTRIC SERVICE INSIDE OF CANOPY - BY G.C.

8

(1) ONE BELL BOX (NO SWITCH) AT EACH SIGN LETTER - SECONDARY RUN TO LETTER. POWER SUPPLIES AND PAIGEBX LOCATED AT CANOPY TOP.



FOR REFERENCE ONLY
REAR ISOMETRIC VIEW OF "I" ATTACHMENT
PREVIOUS CHANNEL LETTER SETUP

LOOK
DINE-IN CINEMAS

Design #

0629849AR3

Sheet 3 of 6

Client

Look Cinemas VII, LLC

Address

1 Hamilton St.
Dobbs Ferry, NY 10522

Acct. Rep. DEBBIE MOLTZ
Coordinator JUSTIN BARNABEE

Designer JOEL GONZALES

Date 8/19/2021

Approval / Date

Client

Sales

Estimating

Art

Engineering

Landlord

Revision/Date

R1(8/25/21)JGZ: Revise per customer notes.
R2(8/30/21)JGZ: Checking code.
R3(9/21/21)JGZ: Remove blade sign - add SF to sign A

CHANDLER
SIGNS

chandler signs.com

National Headquarters
14201 Sovereign Road #101
Fort Worth, TX 76155
(214) 902-2000 Fax (214) 902-2044

San Antonio
17319 San Pedro Avenue
Suite 200
San Antonio, TX 78232
(210) 349-3804 Fax (210) 349-8724

Northeast US
2301 River Road, Suite 201
Louisville, KY 40206
(502) 897-9800 Cell (502) 554-2575

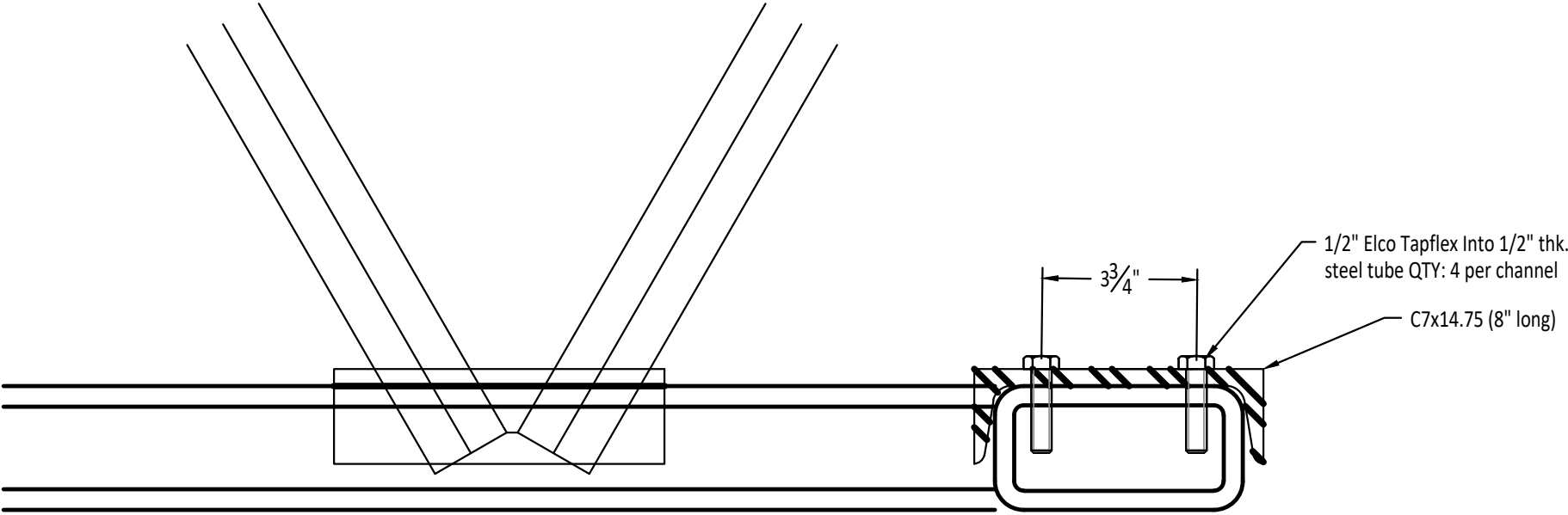
Georgia
111 Woodstone Place
Dawsonville, GA 30534
(678) 725-8852 Fax (210) 349-8724

South Texas
PO BOX 125 206 Doral Drive
Portland, TX 78374
(961) 563-5599 Fax (361) 643-6533

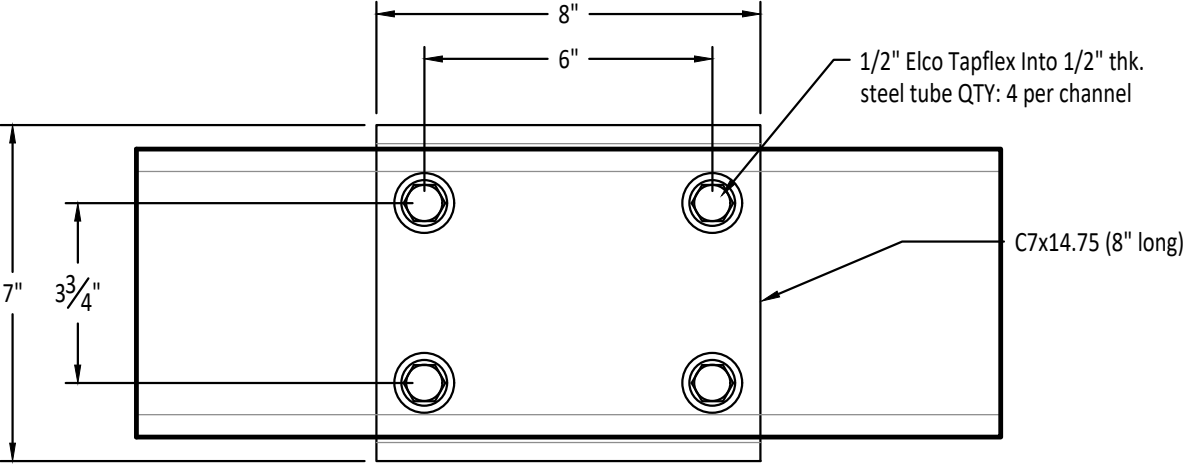
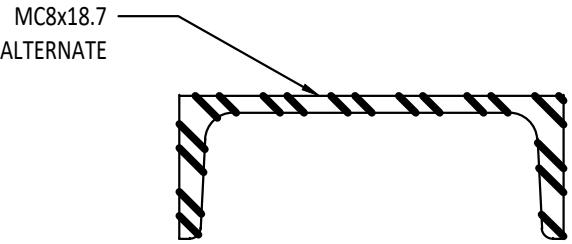
This drawing is the property of
Chandler Signs, LLC
All rights to its use for reproduction
are reserved by Chandler Signs, LLC

**FINAL ELECTRICAL
CONNECTION BY
CUSTOMER**

THIS SIGN IS INTENDED TO BE INSTALLED
IN ACCORDANCE WITH ARTICLE 600 OF THE
NATIONAL ELECTRICAL CODE AND/OR OTHER
APPLICABLE LOCAL CODES. THIS INCLUDES
PROPER GROUNDING & BONDING OF THE SIGN.
SIGN WILL BEAR UL LABEL(S).



Channel Connection TYP.
Profile View
Scale: 3" = 1' 00"



Channel Connection TYP.
Plan View
Scale: 3" = 1' 00"

Tap-Flex™ Thread-Forming Structural Screws

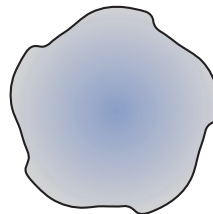
Increased thread engagement with strength and ductility

Elco Construction Products has utilized its 30 years of experience in construction fasteners manufacturing to create Tap-Flex structural fasteners. These thread-forming screws are dual heat treated, self-tapping fasteners that provide the strength, ductility, and resistance to embrittlement failures required in critical curtain wall and dissimilar metal applications. Tap-Flex fasteners are engineered to replace nut and bolt assemblies and Taptite® fasteners commonly used in building construction.

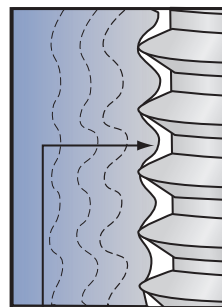
Enhanced Thread Design

Tap-Flex screws are threadformers with the patent-pending E-Form® segmented thread profile. This design improves both installation and in-place performance:

- Decreases thread-forming torque, easing starting and placement
- Overcomes friction build-up and reduces drive torque
- Increases thread engagement, so it resists back-out and loosening caused by vibration or thermal changes



E-Form®
Profile



material rolls in to fill space, increasing thread engagement

Exclusive Flex Technology® Process

Tap-Flex fasteners undergo the unique Flex Technology dual hardening process. The lead tapping threads are selectively hardened to a minimum of HRC 52, easing installation. The load-bearing portion of the fastener is held at or below the critical HRC 34 level. This reduced hardness level also **meets Grade 5 ASTM A449** strength and ductility standards. This helps prevent embrittlement and other structural failures, providing high performance over a long life in the field.



Made in the U.S.A.
with global materials



Specifications

- **Diameters:** 3/8", 1/2", and 5/8"
- **Lengths:** 1-1/2" – 5"

Head Style:

Hex washer with underhead serrations

Threads:

E-Form five-lobe thread forming

Material:

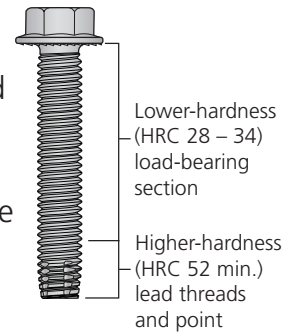
Alloy steel

Finish:

Silver Stalgard® SUB coating

Grade 5:

Meets ASTM A449 specifications (120 ksi strength)



Features and Benefits


- Eliminates thread-tapping operations
- E-Form configuration overcomes friction build-up and reduces drive torque
- Roll forms own work-hardened thread to resist loosening caused by vibration or thermal changes
- Provides enhanced pull-out performance
- Well-suited for metal applications such as steel and aluminum
- Flex Technology heat treat provides required strength and ductility
- Virtually immune to delayed embrittlement failures
- Stalgard SUB coating provides 2000 hours of salt spray resistance (per ASTM B117)
- Accept standard nuts and washers if required

Note: AutoCAD® drawings available to ease design and specification.


Selection Guide*

	Size	Catalog No.	Point	Finish	Wt./ Carton	Qty./ Carton	Load-Bearing Length	Drill Bit Size	Seating Torque
--	------	-------------	-------	--------	----------------	-----------------	------------------------	-------------------	-------------------


3/8" Diameter Anchors with 9/16" Hex Washer Head with Serrations

	ESU310	3/8-16 x 1-1/2	E-Form®	Stalgard® SUB	34	500	1.00"	11/32"	31 ft/lbs
	ESU320	3/8-16 x 2			40	500	1.49"		
	ESU330	3/8-16 x 2-1/2			46	500	1.99"		
	ESU340	3/8-16 x 3			26	250	2.49"		
	ESU350	3/8-16 x 4			32	250	3.49"		
	ESU360	3/8-16 x 5			23	150	4.49"		

1/2" Diameter Anchors with 3/4" Hex Washer Head with Serrations

	ESU410	1/2-13 x 1-1/2	E-Form	Stalgard SUB	36	250	0.875"	15/32"	75 ft/lbs
	ESU420	1/2-13 x 2			41	250	1.365"		
	ESU430	1/2-13 x 2-1/2			47	250	1.865"		
	ESU440	1/2-13 x 3			32	150	2.37"		
	ESU450	1/2-13 x 4			26	100	3.37"		
	ESU460	1/2-13 x 5			30	100	4.37"		

5/8" Diameter Anchors with 3/4" Hex Washer Head with Serrations

	ESU510	5/8-11 x 1-1/2	E-Form	Stalgard SUB	46	250	0.800"	19/32"	150 ft/lbs
	ESU520	5/8-11 x 2			33	150	1.24"		
	ESU530	5/8-11 x 2-1/2			38	150	1.74"		
	ESU540	5/8-11 x 3			29	100	2.24"		
	ESU550	5/8-11 x 4			18	50	3.24"		
	ESU560	5/8-11 x 5			22	50	4.24"		

*All Tap-Flex screws are 120 KSI min. per ASTM A449

Performance Data

Shear (lbs)

Dia.	6063 T5 Aluminum			6061 T6 Aluminum			6063 T5 on 1018 Steel				6061 T6 on 1018 Steel			
	1/8	3/16	1/4	1/8	3/16	1/4	1/8	3/16	1/4	3/8	1/8	3/16	1/4	3/8
3/8"	2321	3476	4979	3560	5205	6885	5015	6560	6975	6965	5711	8701	7721	7611
1/2"	2784	3669	5230	4482	6167	8718	4773	6455	8396	8689	6052	9769	13976	13340
5/8"	2696	3775	5455	4216	6768	9292	4558	6196	8290	8060	5967	9577	13124	15309

Pull Out (lbs)

Dia.	6063 T5 Aluminum			6061 T6 Aluminum			1018 Steel			
	1/8	3/16	1/4	1/8	3/16	1/4	1/8	3/16	1/4	3/8
3/8"	1311	2365	3281	2080	3805	5981	3501	5986	11440	11862
1/2"	1431	2230	3694	2190	3869	7527	3668	7411	13613	20440
5/8"	1755	2907	4191	2641	5202	8210	4500	8300	16678	26680

Identification



Elco flag in a raised circle

NOTE: All performance data shown is based on tests performed under laboratory conditions. The appropriate safety factor should be applied and code requirements factored into specification and use of these fasteners. Final determination of the appropriate safety factor and use of these fasteners is the sole responsibility of the user, specifying Engineer or other person designing the connection.

For more information, please contact:



Elco Construction Products

701 E. Joppa Road • Towson MD 21286

1.800.435.7213 • Fax: 563.387.3540

www.elcoconstruction.com