

October 30, 2021

Petra and Ansgar Brambrink

20 Lyman Place

Dobbs Ferry, NY

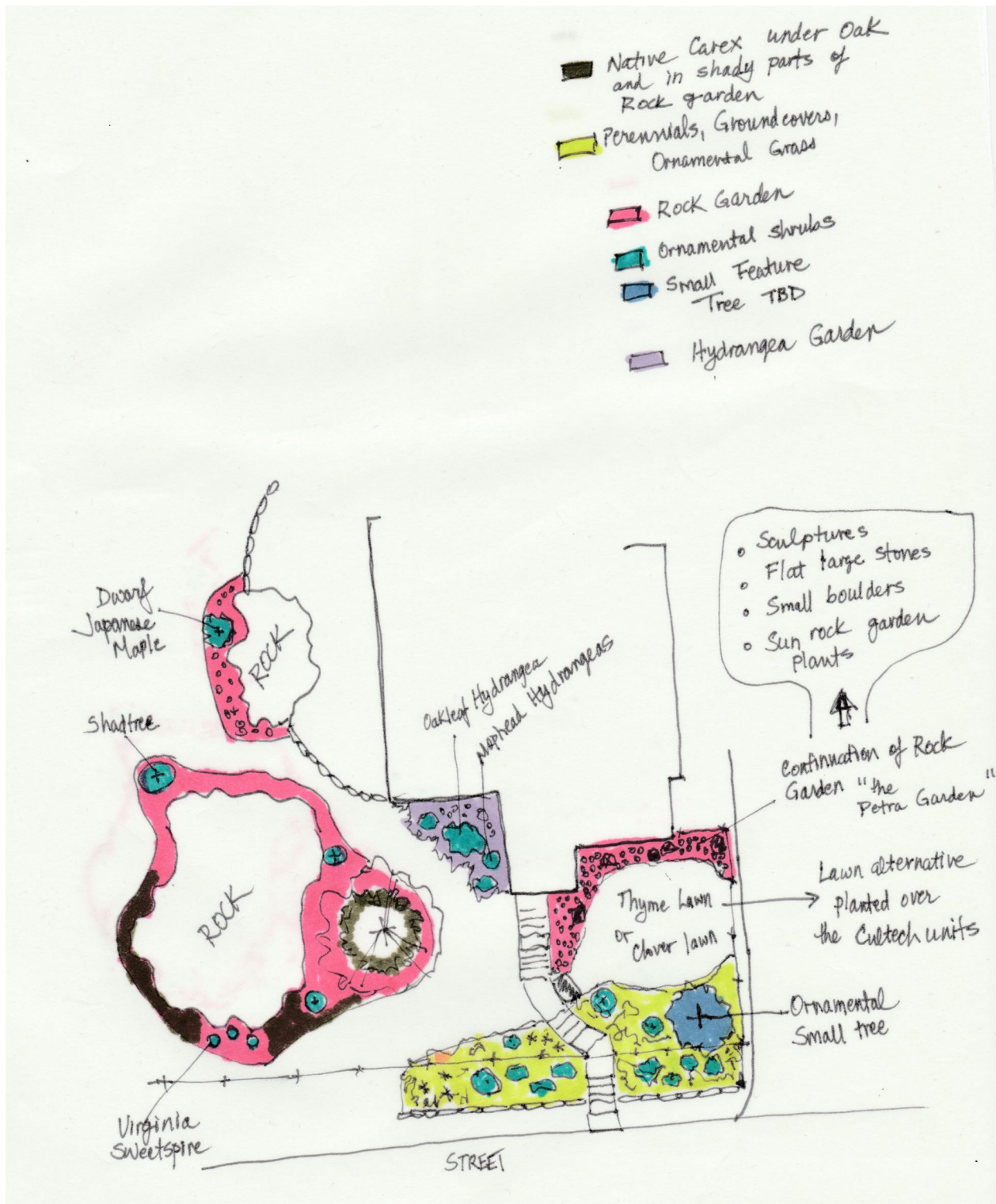
#### REVISED PRELIMINARY PLANTING PLAN

There are several new planting areas:

- A relatively narrow rock garden surrounding the existing rock outcrop areas. The Oak tree at the front of the house will be incorporated into the new planting bed that surrounds the larger rock outcrop. Its root zone will be protected by underplanting with native sedge and wild geranium. Both will spread through the space and create a natural, beneficial ecosystem.
- A hydrangea garden at the front left corner of the house between the front porch and the new addition. This planting bed will feature an Oakleaf Hydrangea and several different varieties of Mophead hydrangeas.
- Ornamental planting beds occupying the lower half of the front yard area in between the driveway and the new front walk. The areas flanking the front steps between the new fence and the existing stone retaining wall will also become garden beds. Plant choices will include several native shrubs, perennials, ornamental grasses, and sedge, as listed below. A new small ornamental tree will be incorporated into the front yard garden, as well as evergreens, native perennials, and ornamental shrubs. Non-native ornamental shrubs, evergreens and perennials will be incorporated into the design as well.
- An extension of the rock garden next to the house on the right side. This area will be partially "mulched" with river rounds and will contain some sun-loving rock garden plants. It will include some medium-sized boulders, large flat stones and whimsical stone sculptures made by the homeowner. It can also incorporate a bird bath - a water source is the single most important thing that wild birds need.
- A "lawn alternative" area over the Cultech infiltration units that take up the upper half of the front yard on the right side where the soil depth is limited. This could be a thyme lawn or a clover lawn, for example. The soil that's used to cover the Cultech units can be amended with sand to be well-draining and the whole space mulched with crushed bluestone. It should not have to be mowed more than a couple of times per year.

ANN ACHESON LANDSCAPE DESIGNS, INC.  
Sustainable Site Design and Garden Re-mixes

Preliminary Planting Plan to give an idea of numbers of plants to be included  
(Filename: "Brambrink REVISED Planting Plan.jpeg")



ANN ACHESON LANDSCAPE DESIGNS, INC.  
*Sustainable Site Design and Garden Re-mixes*

**Representative Native Plants to be Included**

**Native Rock Garden Plants**

Common Name	Botanical Name
Columbine	<i>Aquilegia canadensis</i>
Rosy Sedge	<i>Carex rosea</i>
Bleeding Heart	<i>Dicentra exima</i>
Marginal Wood Fern	<i>Dryopteris marginalis</i>
Wild Geranium	<i>Geranium maculatum</i>
Virginia Sweetspire	<i>Itea virginica</i>
Royal Fern	<i>Osmunda regalis</i>
Switchgrass	<i>Panicum virgatum</i>
Beardtongue	<i>Penstemon digitalis</i>
Wild Blue Phlox	<i>Phlox divaricata</i>
Smooth Blue Aster	<i>Symphyotrichum laeve</i>
Foamflower	<i>Tiarella cordifolium</i>
Lowbush Blueberry	<i>Vaccinium angustifolium</i>

**Native Perennials and Grasses for the Ornamental Garden**

Common Name	Botanical Name
Hyssop	<i>Agastache varieties</i>
Bluestar	<i>Amsonia tabernaemontana</i>
Tickseed	<i>Coreopsis varieties</i>
Coneflower	<i>Echinacea varieties</i>
Beardtongue	<i>Penstemon digitalis</i>
Dwarf Joe Pye Weed	<i>Eupatorium dubium</i>
Black-eyed Susan	<i>Rudbeckia varieties</i>
Little Bluestem Ornamental Grass	<i>Schizachyrium scoparium</i>

**Native Shrubs/Small Trees**

Common Name	Botanical Name
Virginia Sweetspire	<i>Itea virginica</i>
Shadtrees	<i>Amelanchier canadensis</i>
Fothergilla	<i>Fothergilla major</i>
Spicebush	<i>Lindera benzoin</i>
Dwarf White Pine	<i>Pinus strobus</i>

### Thyme Lawn Examples



### Evolution of a Thyme Lawn



ANN ACHESON LANDSCAPE DESIGNS, INC.  
*Sustainable Site Design and Garden Re-mixes*

Example of Clover Lawn



Example of "Rock Garden" Extension in a small space next to the house

