

25 Maple Street

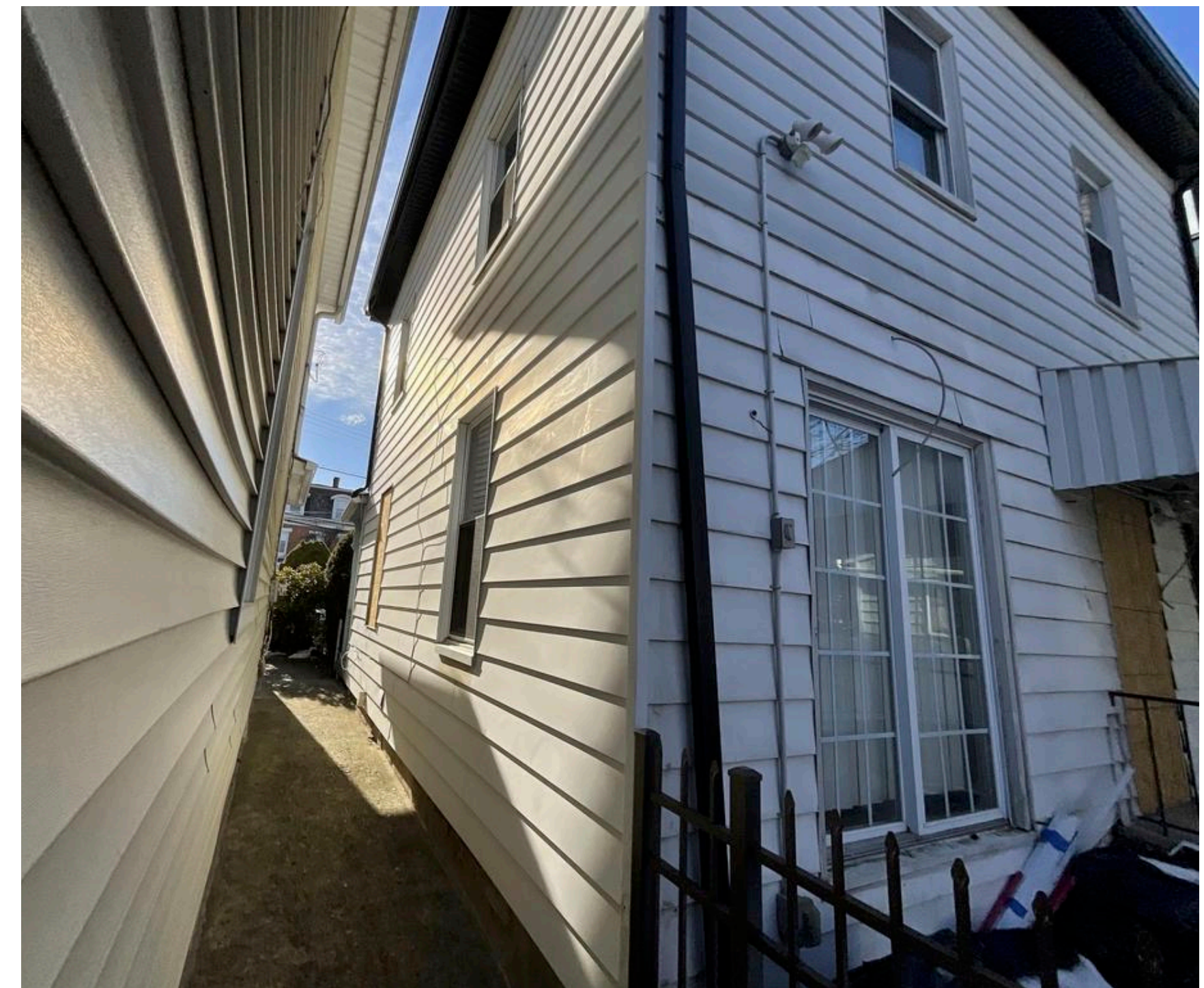
AHRB Presentation

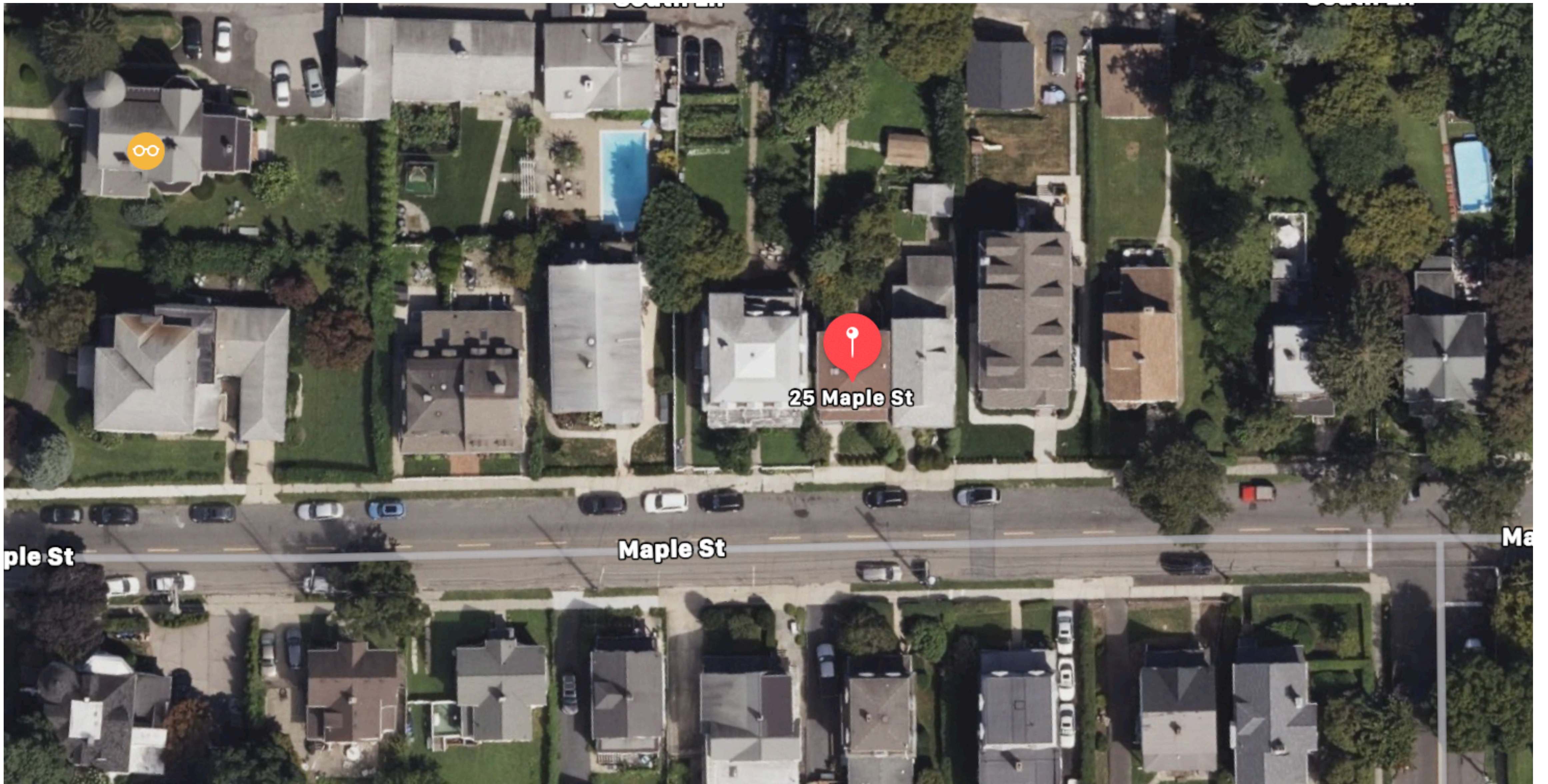
Jean C. López - March 28th, 2022

Scope of Work

- Change current double hung windows to black casement windows
- Change siding to composite cladding, brick veneer and vertical vinyl planks
- Remove black shutters in the front facade of house
- Change front and patio door
- Change porch roof to black aluminum
- Change porch columns color to glacier white and remove decorative detailing

Current Appearance





Satellite Image

Proposed Design



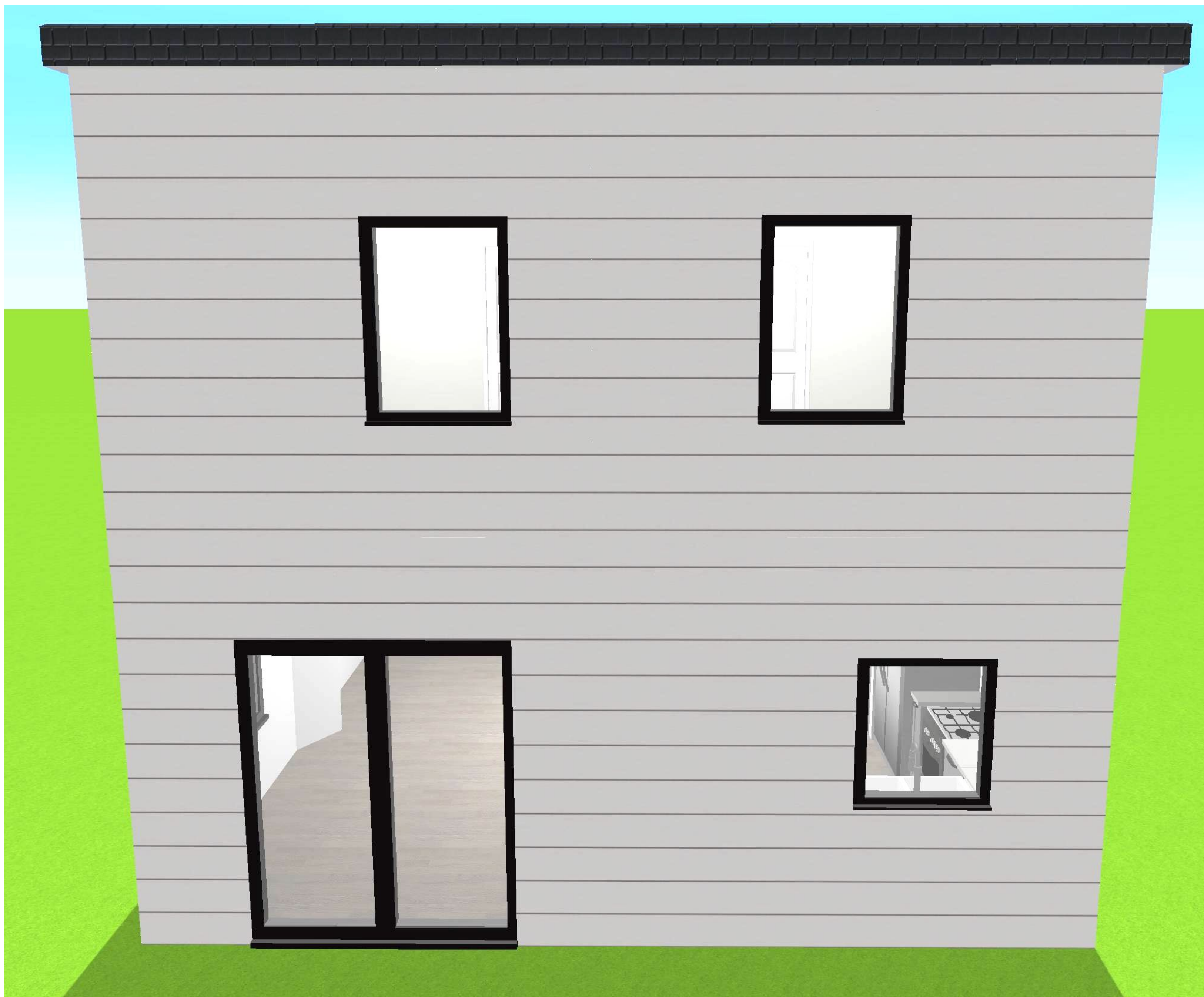
Front Elevation

Key Points

- Siding: Brick Veneer/Vertical Vinyl Planks (Color: Glacier White)
- Windows: Black casement
- Door: Modern Black door
- Roof: Black aluminum porch roof

Removing:
Window Shutters.
Decorative detailing from porch columns.

*Painting Porch to match siding color.



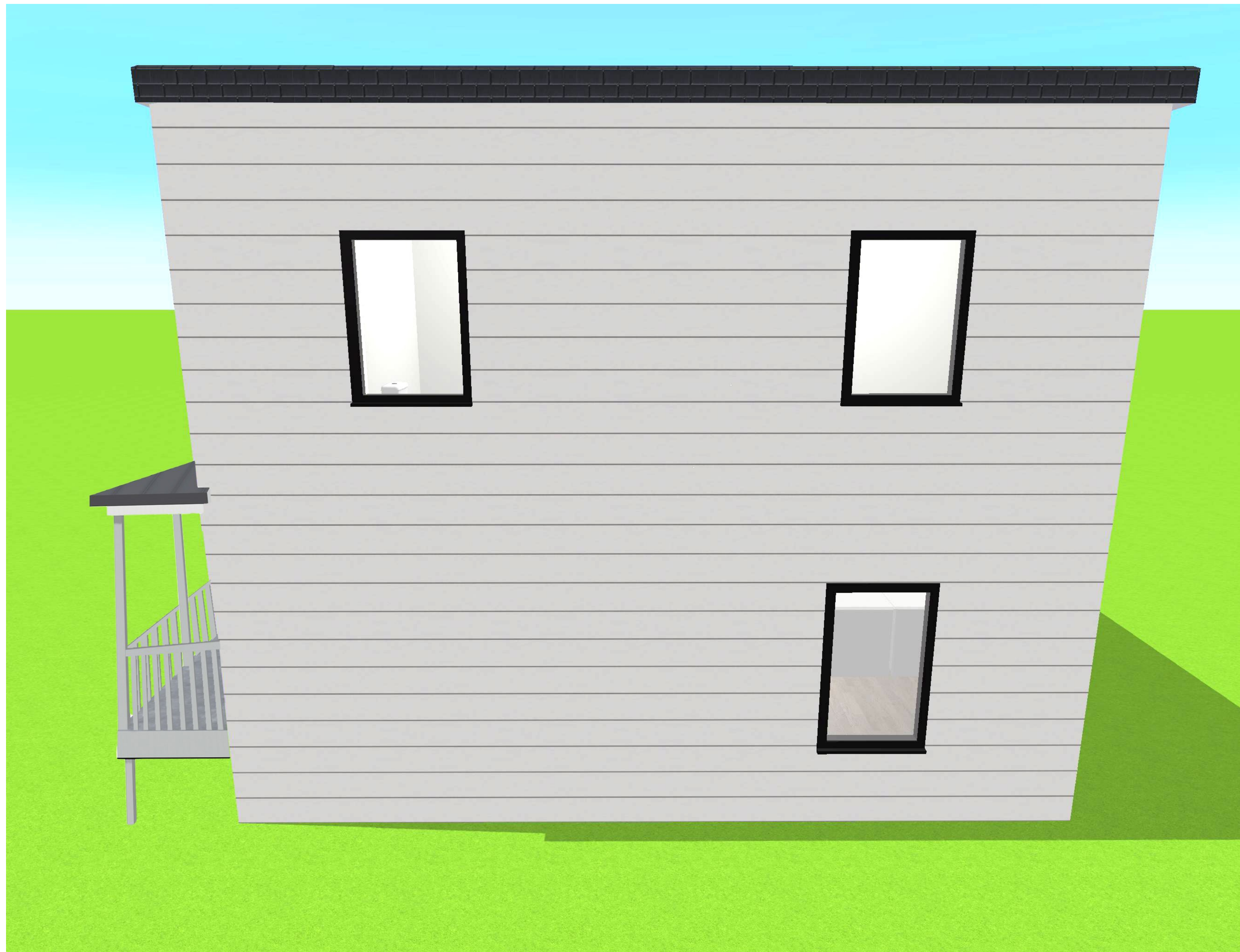
Rear Side Elevation

Key Points

Siding: Composite Cladding
(Color: Glacier White)

Windows: Black casement

Door: Black French patio door

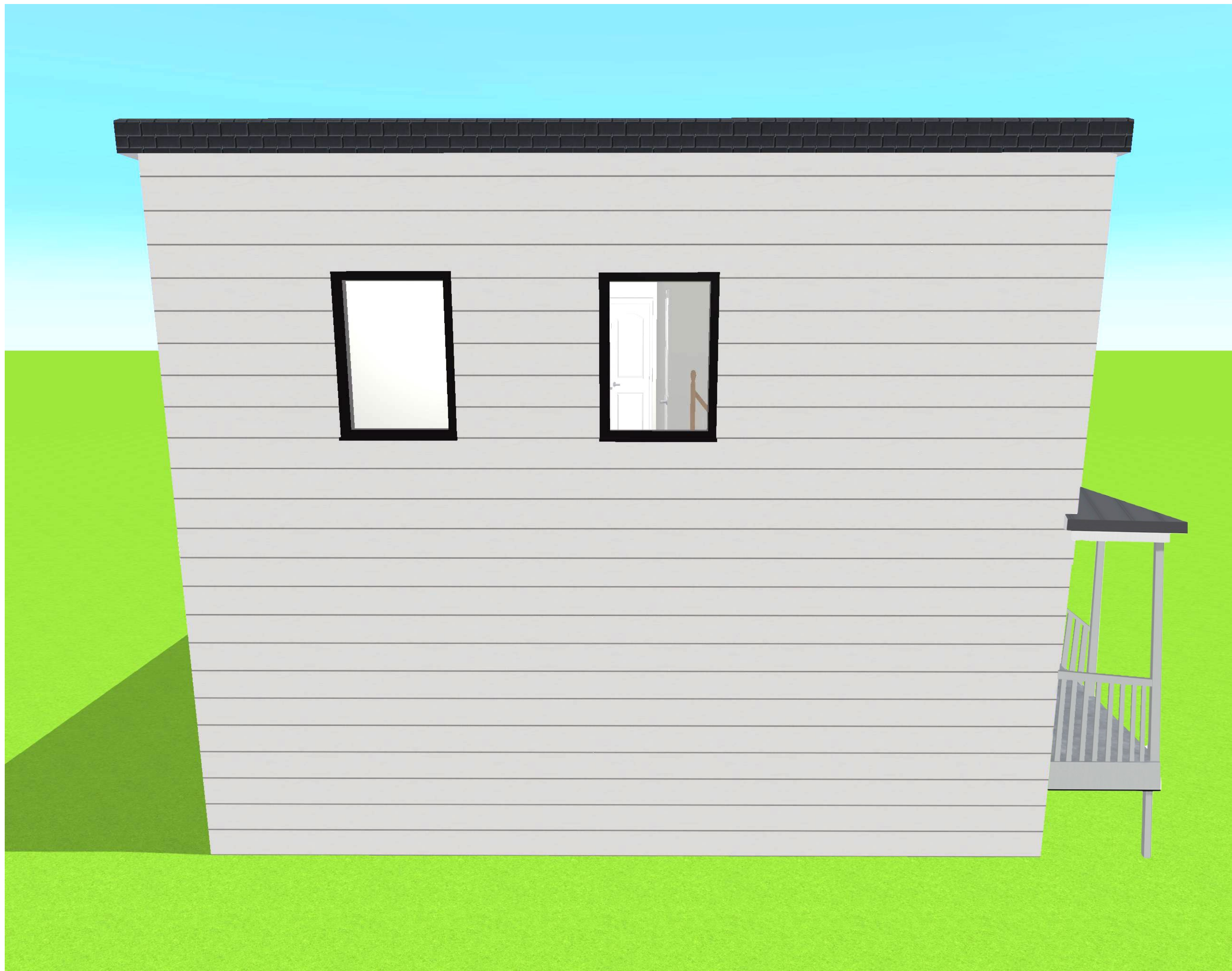


Key Points

Siding: Composite
Cladding (Color: Glacier
White)

Windows: Black casement

Left Side Elevation



Key Points

Siding: Composite Cladding
(Color: Glacier White)
Windows: Black casement

Right Side Elevation

Surrounding Properties



40 Devoe Street



14 Devoe Street



183 Ashford Avenue

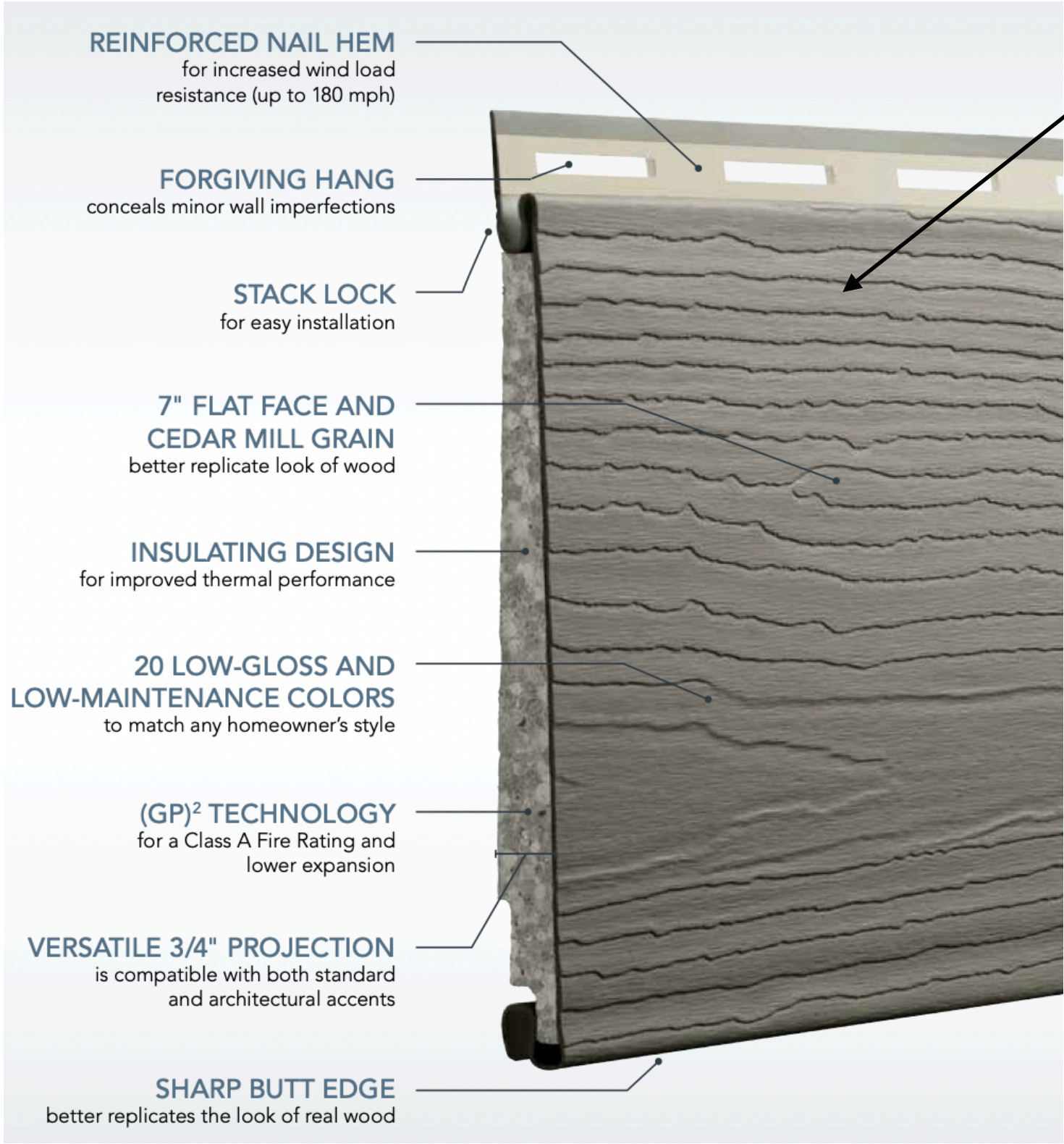


173 Ashford Street

Sidings



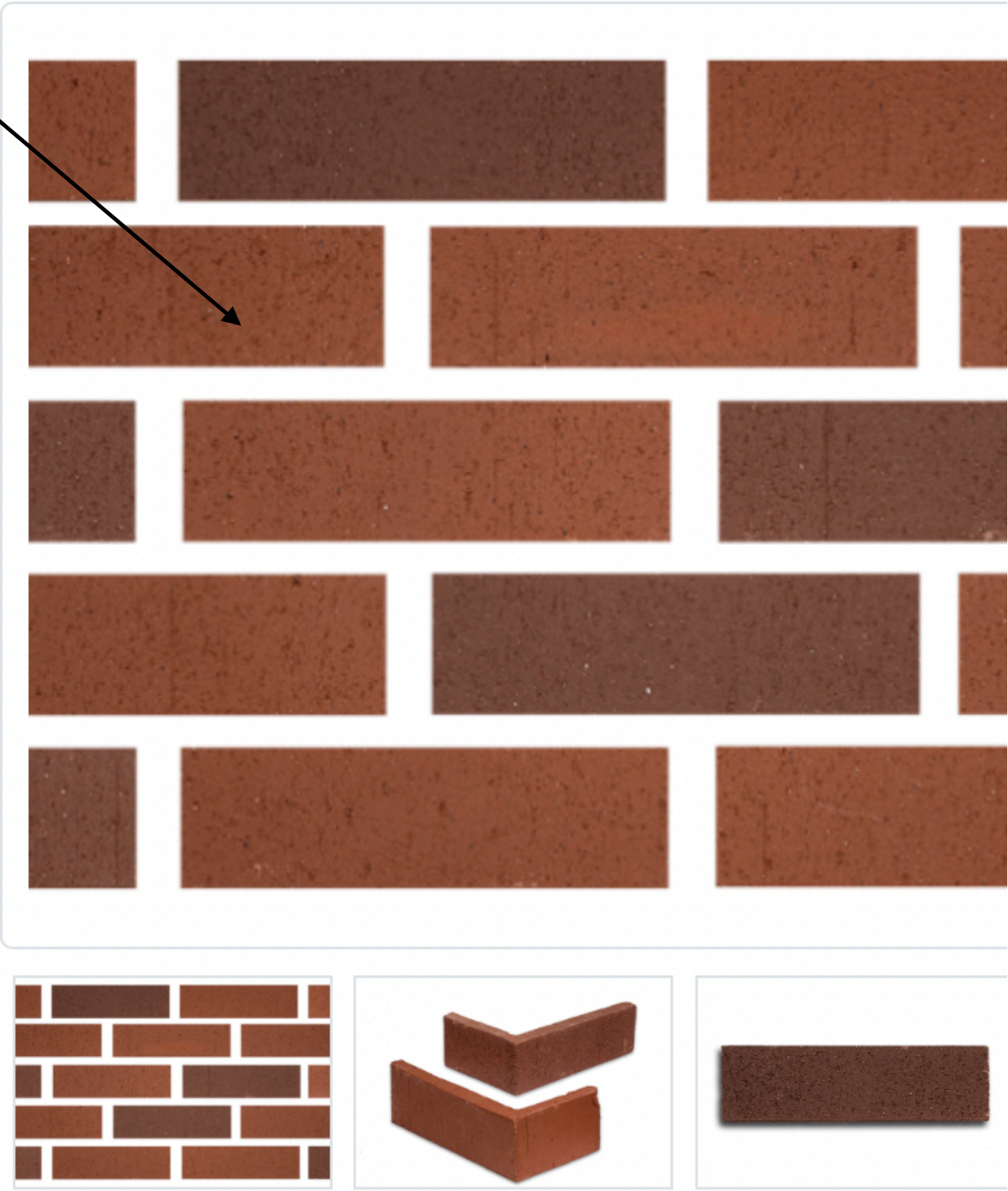
Glacier White



Composite Cladding



Vertical Vinyl Planks



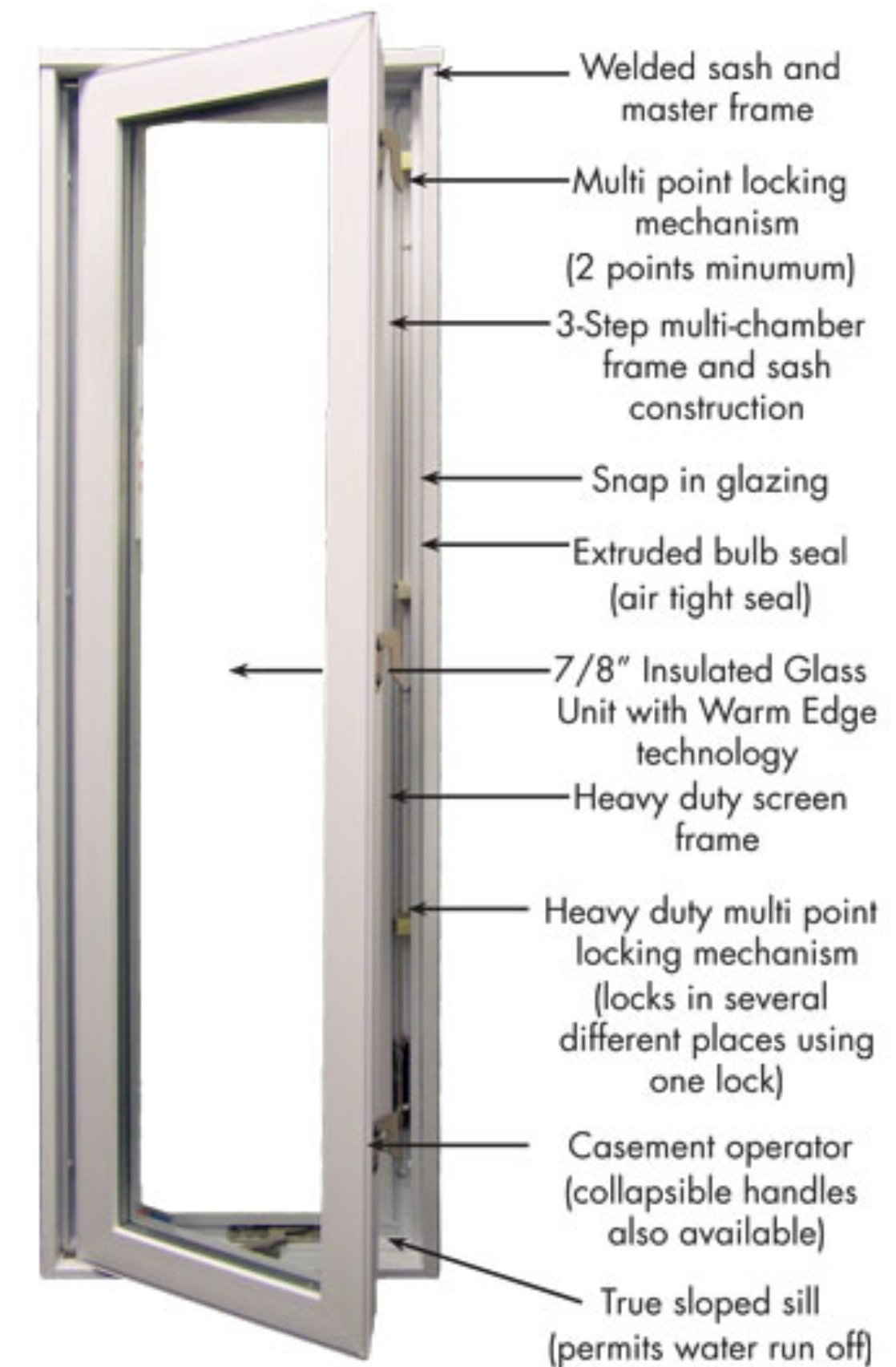
Brick Veneer

Casement Windows



Casement Windows Specifications

- Master frame and sash welded at a temperature of 240 degrees to assure optimum strength
- Heavy duty multi-point locking mechanism - locks in several different places using one handle
- Maximum opening angle of 90 degrees for maximum air flow and easy cleaning
- True 0.080" wall thickness on master frame
- 7/8" Warm Edge insulated glass - Low-E with argon and other high performance glass options also available
- Extruded bulb seal - to block air infiltration
- Sleek but strong operating handle - collapsible handles also available
- Additional 3/4 inch extruded vinyl to assure strength and integrity to the operating portion of the window
- Custom sizes
- True sloped sill permits water run off
- Exterior glazing bead with dual durometer edge seal
- Aluminum-framed, fiberglass screen



Front Door



Rear Patio Door



Doors Specifications

Product Overview

Bring the beauty of the outdoors inside with the energy-efficient Masonite Prehung inswing 10 Lite Steel Patio Door with No Brickmold. Providing natural light and elegant design, the clear, multi-pane insulated glass is treated with a Low-E coating that reflects heat out of the home in the summer and locks in heat during the winter. Plus the premium polyurethane insulation and weather stripping are designed to let the beauty of nature in, but the weather out - resulting in lower heating and cooling bills. Constructed of reinforced steel for strength and durability, this door is the perfect complement to your outdoor decor and can help expand your living space when used for decks, patios and balconies.

- High-quality steel provides strength and security
- Steel reinforced door features energy saving polyurethane door core
- High performance compression weather-stripping helps to seal out drafts
- Low-E tempered glass helps keep you comfortable in any season
- Masonite colors complement Behr paints color palette to easily coordinate your door with shutters, trim and more
- Rot-resistant bottom rail made of high-performance composite materials
- Patio door slabs are double bored for lockset - not included
- Screen kits available for all inswing units - sold separately
- Patio door comes fully assembled with hinges, frame, aluminum sill and weatherstripping

Siding Specifications



ASCEND® 7" COMPOSITE PLANK TECHNICAL SUMMARY

PHYSICAL DATA

Plank Projection	3/4"
Width	8.25"
Exposure	7"
Length	12' 3"
Butt Height	3/8"
Weight	.31 lbs/ft.
Packaging	14 planks/carton
Color	Uniformity is spectrophotometrically controlled
Emboss	Cedar mill grain
Gloss	Uniform low gloss maintained with a 75° gloss meter

PRODUCT TEST DATA

Impact Resistance	57 inch lbs.
Coefficient of Linear Expansion (in/in/°F)	2.3 x 10 ⁻⁵
Thermal Resistance	R-value 2.0
ASTM D 3345	
Termite Resistance	Complete Resistance
ASTM D 5206-13	
Windload Resistance (16" OC nails, 1-1/4" penetration)	53 psf (180 mph)

FIRE RESISTANCE

ASTM E 84 - Class A	
Flame Spread Index	≤25
Smoke Developed Index	≤450
ASTM E 119	
Rated Assemblies	Approved for Use
ASTM D 635	
Rate of Burn	No Self Sustained Burn
ASTM D 1929	
Self Ignition/Flash Ignition Temperature	410°C
NFPA 268	
Section 1406 of IBC	Approved for Use

COLORS

Glacier White	Almond	Monterey Sand	Pebble	Canyon Drift	Flagship Brown	Rustic Timber	Cape Cod Gray	Sterling Gray	Storm
Ageless Slate	Charcoal Smoke	Cast Iron	Laguna Blue	Harbor Blue	Midnight Blue	Riviera Dusk	Mountain Fern	Deep Moss	Fired Brick

CODES AND REGULATORY COMPLIANCE

Intertek Code Compliance Research Report #0316
ICC-ES Evaluation Report – ESR 4449
Florida Product Approval #31747

WARRANTY

Alside supports ASCEND with a Lifetime Limited Warranty to original homeowner and is transferable if the home is sold.

THREE PART FORMAT SPECIFICATION

Long form specification in three part format are available on www.ascendcompositecladding.com.



— BOARD & BATTEN VERTICAL SIDING —

DISCOVER COLOR *for* EVERY HOME: *Classically Styled to Complement your Architecture*

CREATE CUSTOM APPEAL WITH BOLD NEW COLORS
When it comes to exterior design, color is the key in achieving your customer's ideal finished look. The more color options, the easier it is to transform any home from basic to beautiful with eye-catching siding, trim and decorative accents.

Alside Board & Batten siding now features a new architectural color palette with deeper hues and greater design possibilities. For a dramatic effect, pair a darker siding such as Charcoal Smoke with trim colors in Storm or Deep Moss for tone-on-tone elegance. Or take the design in the opposite direction with lighter, contrasting accents in Antique Parchment or Cast Iron for crisp, defining lines. From classic to contemporary, urban or suburban – our extensive color palette delivers high-end quality and refined style.

QUICK SPECS: 7" profile features a 5-1/2" board and 1-1/2" batten strip

- Raised batten strip has a 1/2" projection
- Heavy-duty panel thickness
- Ideal as a whole-house exterior or accent for gables and architectural areas
- Available in a light roughsawn texture
- 28 colors, including standard and architectural hues
- Lifetime limited warranty – see warranty for details

CHOOSE DARKER COLORS WITH CONFIDENCE! Our darker siding colors are fortified with ChromaTrue® technology for superior color retention. This advanced copolymer compound provides long-term color stability and better performance on darker colors.

ChromaTrue®

STANDARD COLOR COLLECTION

Glacier White	Antique Parchment	Natural Linen	Platinum Gray
Cape Cod Gray	Mystic Blue	Coastal Sage	Juniper Ridge
Maple	Monterey Sand	Vintage Wicker	Tuscan Clay

Note: Colors may be slightly different from their appearance in this brochure. Make final color selections using actual product samples. Color availability may vary by market. See your Alside Sales Representative for details.

ARCHITECTURAL COLOR COLLECTION

Fired Brick	Canyon Drift	Flagship Brown	Deep Espresso	Rustic Timber	Mountain Fern
Deep Moss	Harbor Blue	Midnight Blue	Laguna Blue	Riviera Dusk	Storm
Sterling Gray	Ageless Slate	Charcoal Smoke	Cast Iron		

CERTIFIED PRODUCT

Pertains to Board & Batten Vertical Siding
Consult the VSI website at www.vsideiding.org for a current list of certified products and colors.

Alside Alside 3773 State Road Cuyahoga Falls, Ohio 44223
1-800-922-6009 www.alside.com

©2021 Alside. Alside and Board and Batten are registered trademarks of Associated Materials, LLC. USGBC and related logo is a trademark owned by the U.S. Green Building Council and is used by permission. Specifications subject to change without notice. Printed in USA 10/21 7M/OP 75-2562-01

USGBC Please recycle

Brick it™ PRODUCT PROFILE



Revised 1/2019

Clay Thin Brick (1/2", 3/4" and 1" thick)

General

We provide clay thin brick in a multitude of shades and textures to accommodate the visual and application requirements of most projects. Sizes range from 8 to 16 inch and from extruded to handmade providing the widest range of thin brick available for any application.

The thickness of the thin brick available is based on the method of manufacture and the desired texture/uniformity.

Extruded thin brick available in 1/2" thickness are typically extruded as thin brick with unique surface textures and colors meeting Type TBS tolerances.

The greatest variety of thin brick are available in molded and extruded 3/4" thickness. This thickness allows units to be cut from full units often specifically manufactured with larger coring and thinner webs to facilitate cutting while reducing the quantity of raw material required for manufacture. Material cut from the thin brick can be ground and reused to manufacture thin or full size units. In addition, Brick It's unique large scale custom cutting operation allows thin brick to be cut from a specific lot of full brick to ensure color matching of both full and thin brick.

Handmade thin brick are available in 3/4" thickness to accommodate the inherent variation expected from handmade units.

Today's thin brick are installed in a wide variety of different wall systems including thickset, thinset, metal panel systems (such as Brick It DMG® Panels) as well as precast and tilt-up concrete wall systems. The appearance of thin brick, as well as the method of manufacture, affects the potential use of the thin brick in the various wall systems available. The thickness of the individual thin brick typically has minimal, if any, effect on any of the applications.

While each of the three categories of thin brick previously listed can be installed in most of thin brick wall systems, the precast and tilt-up concrete wall systems require thin brick with very rigid tolerances and surface textures limited to smooth or velour (wirecut) textures. In addition the cleaning techniques utilized by concrete panel manufacturers may also limit colors typical of full size units. See additional information at the end of this Profile regarding thin brick for use with precast and tilt-up concrete wall systems.

Additional information is available from your Brick It representative for each thin brick wall system.

Unit Specifications

Thin brick is typically manufactured to conform to the require-ments of American Society for Testing

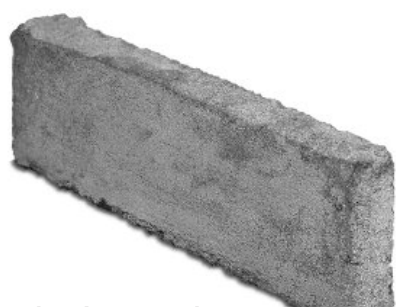
and Materials (ASTM) Standard Specification C 1088, Grade Exterior. Depending upon the particular product selected, Type TBA, TBS, or TBX may be available. These products also conform to the requirements of ASTM C 1088, Grade Interior. When specifying this product, the specifications should cite:

- 1) The product name and state "as distributed by Brick It."
- 2) Conformance to the requirements ASTM C 1088, Grade Exterior.
- 3) The actual unit dimensions listed as thickness x height x length.

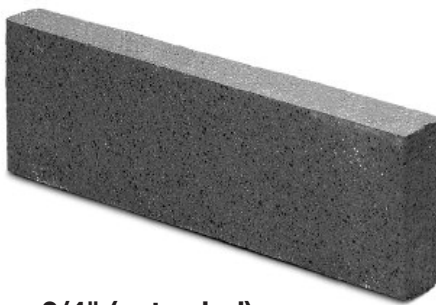
Example: Harding Blend thin brick as distributed by Brick It to conform to the requirements of ASTM C 1088, Grade Exterior, Type TBS. The units shall have dimensions of 3/4" X 2-1/4" X 7-5/8".



1/2" (extruded)



3/4" (molded)



3/4" (extruded)



3/4" (handmade)