

Westchester Double Hung



Old world design meets modern day performance. The design of the Westchester Double Hung is historically driven with its narrow checkrail, stiles, and wide bottom rail, while maintaining the modern conveniences of hidden tilt latches, effortless operation, and superior performance in low maintenance finishes. With a complete product offering including operating double and single hung, picture, and transom configurations, the Westchester Double Hung is sure to fill any niche.

Standard Construction:

- Frame is 5/8" thick with 0.063" thick exterior cladding with integral nail fin, mitered corners that are mechanically fastened.
- Sloped sill fabricated with 0.078" thick extruded vinyl with aluminum clad exterior and wood interior. PVC endcap water management system with integral angled installation leg.
- Full 1-3/4" thick sash with stiles and rails slot and tenon joined; Checkrail joined using dovetail and thermally broken with fiberglass interlock. Narrow 2" stiles and upper sash top rail, 1-1/2" checkrail, and 3-3/8" bottom sash rail. Stiles run through the bottom and top rails. 3/4" and 1" glass thickness.
- Removable tilt in sash operated with concealed constant force balances and hidden tilt latches in the sash stiles.
- Lock and latches operated with single combination lock and tilt mechanism.
- Standard, innovative, narrow profile, removable Flexscreen.



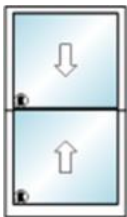
Pictured: Westchester Double Hung,
(Right) Ultra coat black interior

MINIMUM / MAXIMUM FRAME SIZES

Additional sizes may be available upon request and approval.

WESTCHESTER DOUBLE/SINGLE HUNG		WESTCHESTER PICTURE		WESTCHESTER TRANSOM	
Minimum Frame Width	17-1/2"	Minimum Frame Width	17-1/2"	Minimum Frame Width	15-1/2"
Minimum Frame Height	35-1/2"	Minimum Frame Height	35-1/2"	Minimum Frame Height	35-1/2"
Maximum Frame Width	59-1/2"	Maximum Frame Width	83-1/2"	Maximum Frame Width	95-1/2"
Maximum Frame Height	107-1/2"	Maximum Frame Height	107-1/2"	Maximum Frame Height	35-1/2"
		Maximum Sq/Ft	56	Maximum Sq/Ft	24

Performance Data:



Operating Double Hung: 47.5" x 83.5" Frame Size

AIR INFILTRATION.....0.13/0.11
WATER.....NO LEAKAGE @ 7.52 PSF
STRUCTURAL.....LC-PG50 (+55/-55)

Operating Double Hung: 59.5" x 107.5" Frame Size

AIR INFILTRATION.....0.13/0.13
WATER.....NO LEAKAGE @ 4.50 PSF
STRUCTURAL.....LC-PG30 (+30/-45)



Picture Unit: 71.5" x 107.5" Frame Size

AIR INFILTRATION.....0.02/0.01
WATER.....NO LEAKAGE @ 7.52 PSF
STRUCTURAL.....LC-PG50 (+55/-55)

Thermal Performance (NFRC):

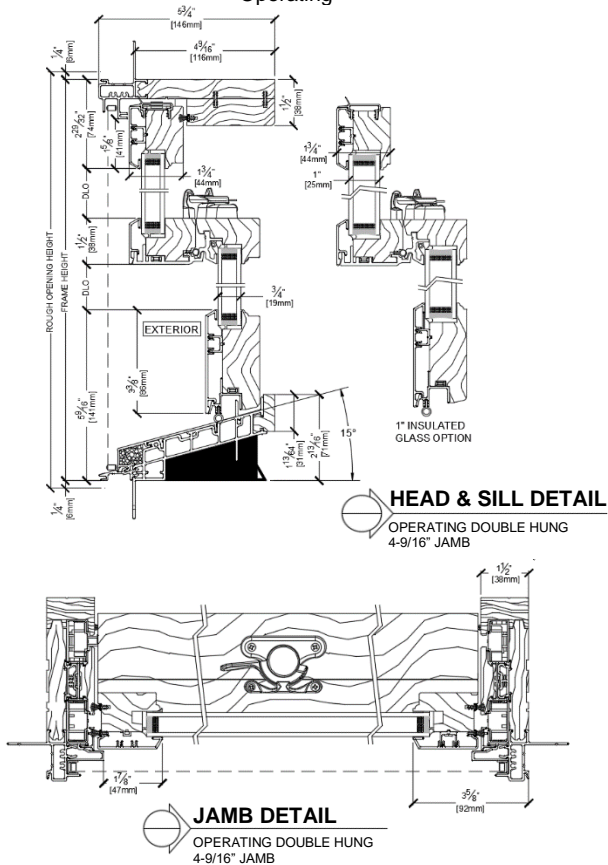
Air Filled			Argon Filled		
Low-E 272 Clear	Low-E 366	Triple IG (LE272/LE180/LEi89)	Low-E 272 Clear	Low-E 366	Triple IG (LE272/LE180/LEi89)
U-FACTOR.....0.31	U-FACTOR.....0.31	U-FACTOR.....0.24	U-FACTOR.....0.28	U-FACTOR.....0.28	U-FACTOR.....0.21
SHGC.....0.28	SHGC.....0.20	SHGC.....0.26	SHGC.....0.27	SHGC.....0.20	SHGC.....0.26
VT.....0.49	VT.....0.46	VT.....0.44	VT.....0.49	VT.....0.46	VT.....0.44
CR.....53	CR.....54	CR.....51	CR.....57	CR.....57	CR.....55

Values represent insulated glass units using standard black warm edge spacer. Additional glazing options available.

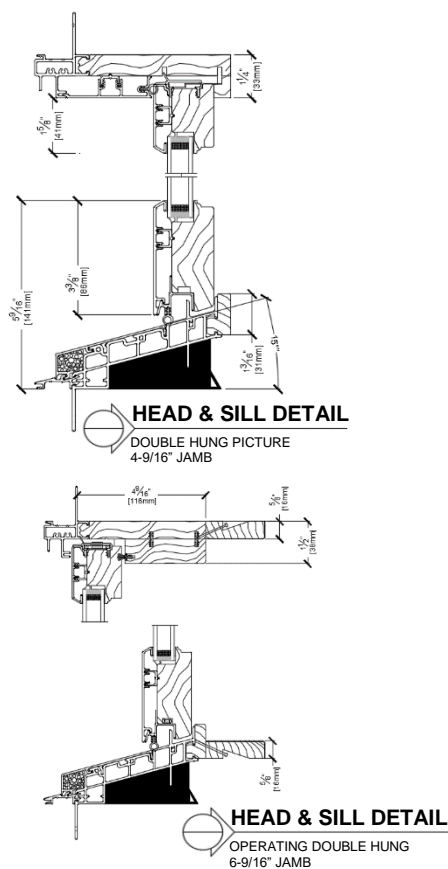
For a comprehensive list of glazing configurations, please refer to the Clad Westchester Double/Single Hung Product Performance Guide (NFRC) located in the Technical Resources Library on our website.

5/13/2022

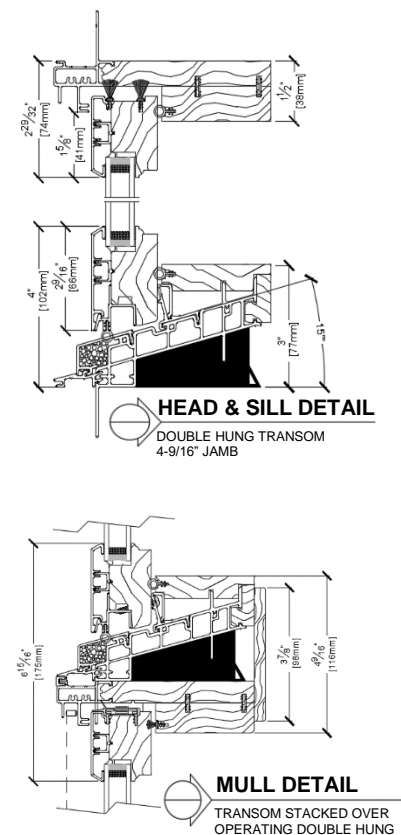
Clad Westchester Double Hung Operating



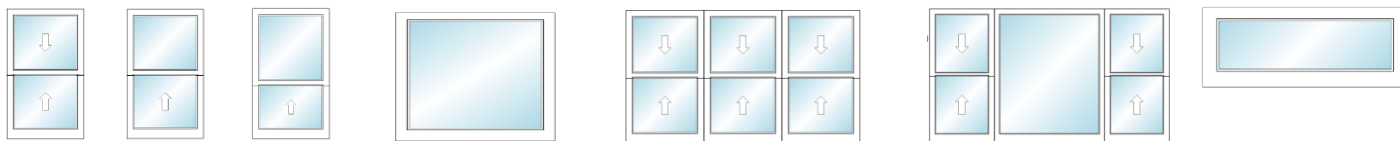
Clad Westchester Double Hung Picture



Clad Westchester Double Hung Transom



Additional product details may be found on our website www.sierrapacificwindows.com/ProfessionalResources/TechnicalLibrary



Typical configurations shown. Contact us for additional options.

LOCKING/OPERATING HARDWARE



Bright Brass



Matte Black

OPTIONAL LIFT HANDLES



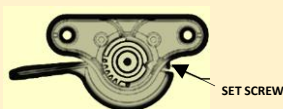
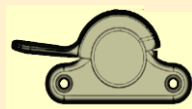
Finger Lift

Cabinet Handle

Twelve Available Finishes:

White, Champagne, Bronze, Bright Brass, Brushed Chrome, Polished Chrome, Antique Brass, Oil Rubbed Forever Bronze, Chestnut Bronze, Matte Black, Satin Nickel, Satin Brass

OPTIONAL CUSTODIAL LOCK FEATURE



SET SCREW

Westchester Double Hung / Single Hung Additional Features

- Color Palette of 70 powder coated finishes in six design collections that meet AAMA 2605 and AAMA 2604 specifications.
- Extensive offering of performance glass available using black warm edge or Cardinal XL Edge spacer for optimum efficiency.
- Simulated Divided Lites available in 5/8", 7/8" and 1" Putty; 5/8", 7/8", 1", 1-1/4" and 2" Traditional and Contemporary.
- Grilles-Between-Glass available in 5/8" flat and 11/16" contour.
- 60/40, 40/60 or custom venting splits.
- Optional roll formed or extruded full or half framed screens.

Please visit our website www.sierrapacificwindows.com for additional details or to contact your nearest Sierra Pacific Branch or Dealer location.

Place Business Card or
Company Information Here

Clad Aspen Awning



Known for its architecturally sculpted lines and hidden locking system, the Clad Aspen Awning has been re-engineered for even better structural performance and resistance to air and water intrusion.

Standard Construction:

- 0.062" thick extruded aluminum exterior.
- Clad frame is extruded with integral nail fin and corners are sealed with silicone and mechanically fastened.
- 5-11/16" overall frame depth with standard 4-9/16" jamb depth.
- 1-13/16" sash thickness. 2-3/16" sash stile and head rail, 2-11/16" bottom rail.
- 0.062" factory applied drip cap.
- Continuous foam frame weatherstrip. Leaf sash weatherstrip.
- Exclusive hidden locking system. Truth Encore operator and folding handle.
- Standard liftrail screen frame. Optional Flexscreen.

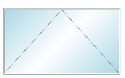


MINIMUM / MAXIMUM FRAME SIZES

Additional sizes may be available upon request and approval.

ASPEN AWNING – OPERATING		ASPEN AWNING – STATIONARY/PICTURE	
Minimum Frame Width	16"	Minimum Frame Width	16"
Minimum Frame Height	16"	Minimum Frame Height	16"
Maximum Frame Width	60"	Maximum Frame Width	120"
Maximum Frame Height	60"	Maximum Frame Height	120"
		Maximum Square Feet	56

Performance Data:



Operating Awning: 60" x 36"

AIR INFILTRATION.....0.02/0.01/A3
WATER.....NO LEAKAGE @ 9.82 PSF
STRUCTURAL.....CW-PG65 (+65/-65)



Operating Awning/Picture: 42" x 24"-2/84" x 72"

AIR INFILTRATION...0.01/0.01
WATER.....NO LEAKAGE @ 7.52PSF
STRUCTURAL.....CW-PG50 (+50/-50)*



Operating Awning: 60"x 60" (Multi-wide)

AIR INFILTRATION.....0.01/0.01/A3
WATER.....NO LEAKAGE @ 7.52 PSF
STRUCTURAL.....CW-PG50 (+50/-50)

For a comprehensive list of tested and rated sizes and configurations, please refer to the Clad Aspen Awning Product Performance Guide (Structural) located in the Technical Resources Library on our website.

*Unit will meet rating with 3/4" steel horizontal plate mull and installation straps.

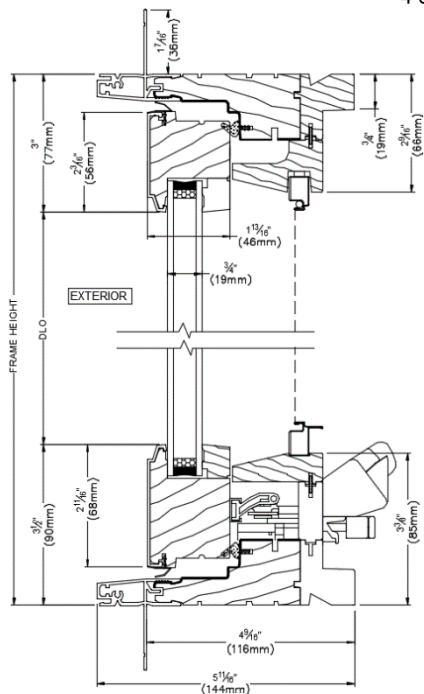
Thermal Performance (NFRC):

Air Filled			Argon Filled		
Low-E 272 Clear	Low-E 366	Triple IG (LE272/LE180/LEi89)	Low-E 272 Clear	Low-E 366	Triple IG (LE272/LE180/LEi89)
U-FACTOR.....0.29	U-FACTOR.....0.29	U-FACTOR.....0.18	U-FACTOR.....0.26	U-FACTOR.....0.25	U-FACTOR.....0.16
SHGC.....0.28	SHGC.....0.18	SHGC.....0.24	SHGC.....0.27	SHGC.....0.18	SHGC.....0.24
VT.....0.47	VT.....0.42	VT.....0.40	VT.....0.47	VT.....0.42	VT.....0.40
CR......56	CR......48	CR......64	CR......66	CR......52	CR......65

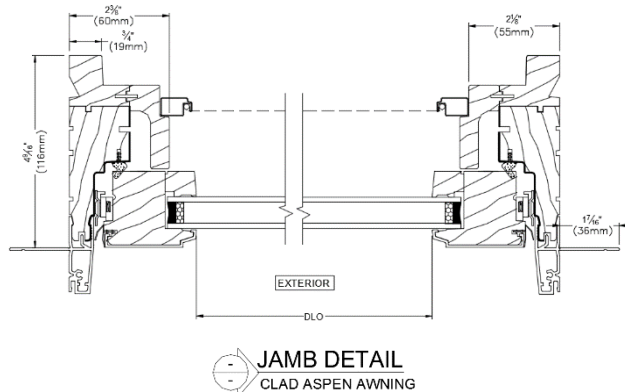
All values represent insulated glass units using standard black warm edge spacer. Additional glazing options available.

For a comprehensive list of glazing configurations, please refer to the Clad Aspen Awning Product Performance Guide (NFRC) located in the Technical Resources Library on our website.

Operable 4 9/16" JAMB

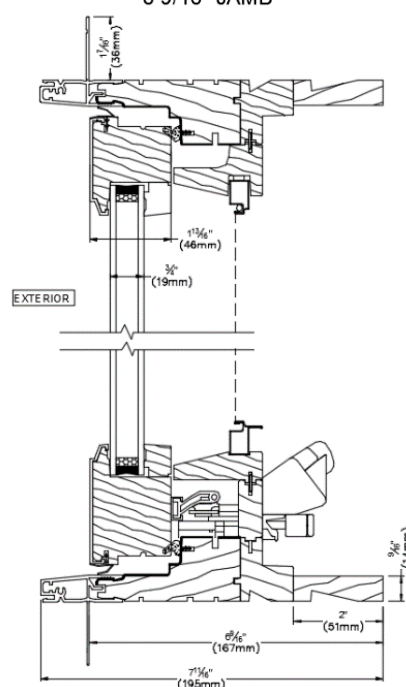


HEAD & SILL DETAIL
CLAD ASPEN AWNING



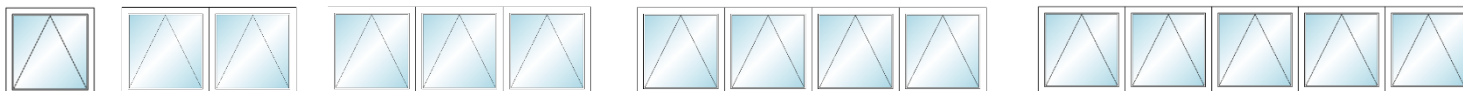
JAMB DETAIL
CLAD ASPEN AWNING

Operable 6 9/16" JAMB

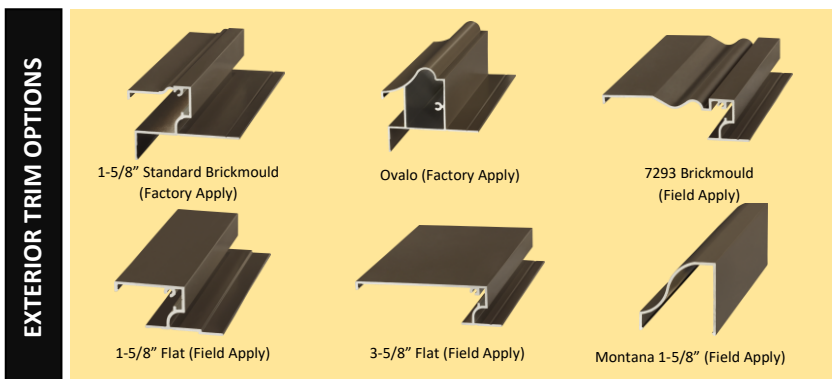


HEAD & SILL DETAIL
CLAD ASPEN AWNING

Additional product details may be found on our website www.sierrapacificwindows.com/ProfessionalResources/TechnicalLibrary



Typical configurations shown. Handing as viewed from the exterior. Contact us for additional options.



Exclusive hidden locking system with folding operating handles, available in 10 finishes: **Matte Black, Bronze, Satin Nickel, Coppertone, White, Brushed Chrome, Oil Rubbed Bronze, Chestnut Bronze, Antique Brass*, Bright Chrome* and Bright Brass*.**

**Special Order. Extended lead-time.*

Aspen Awning Additional Features

- Color Palette of 70 powder coated finishes in six design collections that meet AAMA 2605 and AAMA 2604 specifications.
- Extensive offering of performance glass available in black warm edge or Cardinal spacer for optimum efficiency.
- Simulated Divided Lites available in 5/8", 7/8" and 1" Putty; 5/8", 7/8", 1", 1-1/4" and 2" Traditional and Contemporary.
- Grilles-Between-Glass available in 5/8" and 1" flat.
- Optional veneer wrapped or Genius retractable screen.
- Factory mulling up to 5-wide, stacking and pocket mulls. Structural support options available.

Please visit our website www.sierrapacificwindows.com for additional details or to contact your nearest Sierra Pacific Branch or Dealer location.

Place Business Card or
Company Information Here

Clad Aspen Casement



Known for its architecturally sculpted lines and hidden locking system, the Clad Aspen Casement has been re-engineered for even better structural performance and resistance to air and water intrusion.

Standard Construction:

- 0.062" thick extruded aluminum exterior.
- Clad frame is extruded with integral nail fin and corners are sealed with silicone and mechanically fastened.
- 5-11/16" overall frame depth with standard 4-9/16" jamb depth.
- 1-13/16" sash thickness. 2-3/16" sash stile and head rail, 2-11/16" bottom rail.
- 0.062" factory applied drip cap.
- Continuous foam frame weatherstrip. Leaf sash weatherstrip.
- Exclusive hidden locking system. Truth Encore operator and folding handle.
- Sash opens 90 degrees for easy cleaning and removal from the inside.
- Standard liftrail screen frame. Optional Flexscreen.

MINIMUM / MAXIMUM FRAME SIZES			
Additional sizes may be available upon approval.			
ASPEN CASEMENT – OPERATING (25 SQ/FT MAXIMUM)		ASPEN CASEMENT – STATIONARY/PICTURE	
Minimum Frame Width	16.5"	Minimum Frame Width	12"
Minimum Frame Height	18"	Minimum Frame Height	12"
Maximum Frame Width	42"	Maximum Frame Width	120"
Maximum Frame Height	96"	Maximum Frame Height	120"
		Maximum Square Feet	56



Performance Data:



Operating Casement: 36" x 84"

AIR INFILTRATION.....0.02/0.03/A3
WATER.....NO LEAKAGE @ 8.35 PSF
STRUCTURAL.....CW-PG55 (+55/-55)



Operating Casement: 38" x 96" (single and multi-wide)

AIR INFILTRATION.....0.01/0.01/A3
WATER.....NO LEAKAGE @ 9.82 PSF
STRUCTURAL.....CW-PG65 (+65/-65)**



Operating Casement: 42" x 76"

AIR INFILTRATION.....0.02/0.01/A3
WATER.....NO LEAKAGE @ 7.52 PSF
STRUCTURAL.....CW-PG50 (+50/-50)*



Casement Picture: 84" x 96"

AIR INFILTRATION...0.01/0.01/FIXED
WATER.....NO LEAKAGE @ 7.52PSF
STRUCTURAL.....CW-PG50 (+50/-50)

*Unit requires high performance hinge and high performance dual arm operator.

**Unit requires high performance hinge and high performance dual arm operator. Multi-wide units require a ¼" steel plate mull and installation straps to meet rating.

For a comprehensive list of tested and rated sizes and configurations, please refer to the Clad Aspen Casement Product Performance Guide (Structural) located in the Technical Resources Library on our website.

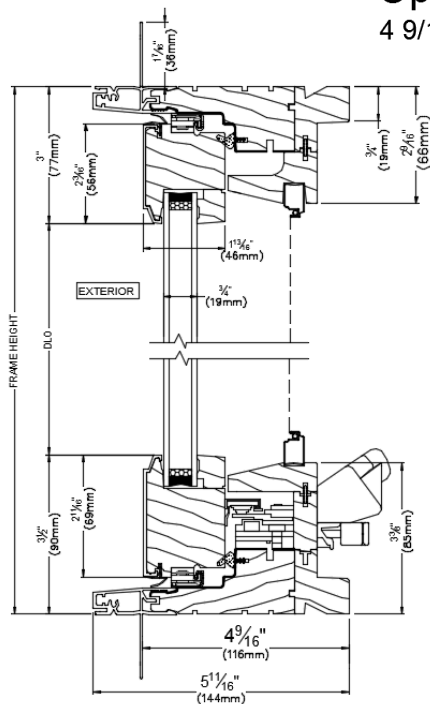
Thermal Performance (NFRC):

Air Filled			Argon Filled		
Low-E 272 Clear	Low-E 366	Triple IG (LE272/LE180/LEi89)	Low-E 272 Clear	Low-E 366	Triple IG (LE272/LE180/LEi89)
U-FACTOR.....0.29	U-FACTOR.....0.29	U-FACTOR.....0.18	U-FACTOR.....0.26	U-FACTOR.....0.26	U-FACTOR.....0.16
SHGC.....0.28	SHGC.....0.19	SHGC.....0.24	SHGC.....0.28	SHGC.....0.19	SHGC.....0.24
VT.....0.48	VT.....0.43	VT.....0.41	VT.....0.48	VT.....0.43	VT.....0.41
CR.....57	CR.....57	CR.....58	CR.....60	CR.....61	CR.....62

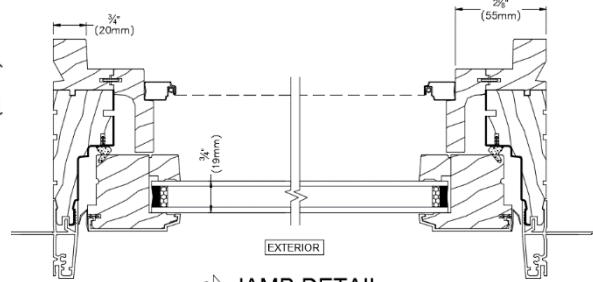
All values represent insulated glass units using standard black warm edge spacer. Additional glazing options available.

For a comprehensive list of glazing configurations, please refer to the Clad Aspen Casement Product Performance Guide (NFRC) located in the Technical Resources Library on our website.

Operable 4 9/16" JAMB

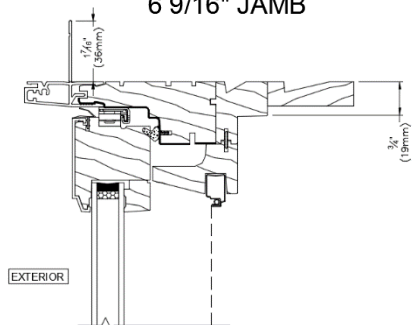


HEAD & SILL DETAIL
CLAD ASPEN CASEMENT

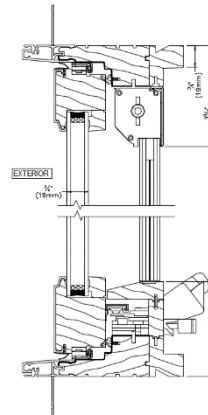


JAMB DETAIL
CLAD ASPEN CASEMENT

Operable 6 9/16" JAMB

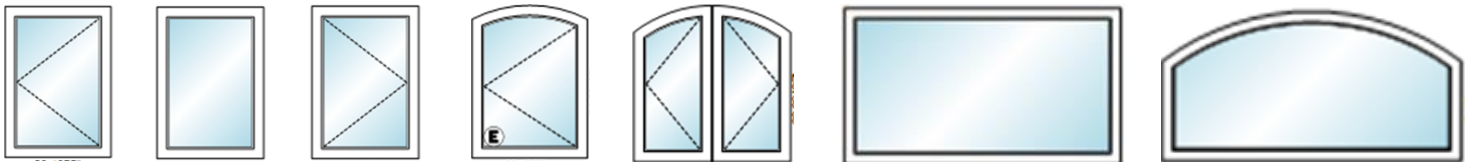


HEAD DETAIL
CLAD ASPEN CASEMENT



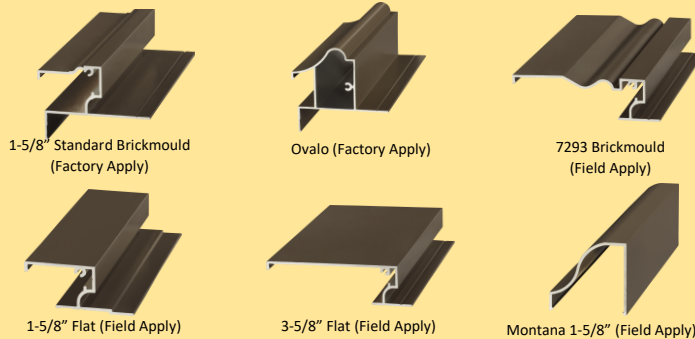
HEAD & SILL DETAIL
CLAD ASPEN CASEMENT
w/ GENIUS SCREEN

Additional product details may be found on our website www.sierrapacificwindows.com/ProfessionalResources/TechnicalLibrary



Typical configurations shown. Handing as viewed from the exterior. Contact us for additional options.

EXTERIOR TRIM OPTIONS



Exclusive hidden locking system with folding operating handles, available in 10 finishes: **Matte Black, Bronze, Satin Nickel, Coppertone, White, Brushed Chrome, Oil Rubbed Bronze, Chestnut Bronze, Antique Brass*, Bright Chrome* and Bright Brass*.**

**Special Order. Extended lead-time.*

Aspen Casement Additional Features

- Color Palette of 70 powder coated finishes in six design collections that meet AAMA 2605 and AAMA 2604 specifications.
- Extensive offering of performance glass available in black warm edge or Cardinal spacer for optimum efficiency.
- Grille options include Simulated Divided Lite and Grilles-Between-Glass.
- Optional veneer wrapped or Genius retractable screens.
- Factory mulling up to 5-wide, stacking and pocket mulls. Structural support options available.

Please visit our website www.sierrapacificwindows.com for additional details or to contact your nearest Sierra Pacific Branch or Dealer location.

*Place Business Card or
Company Information Here*

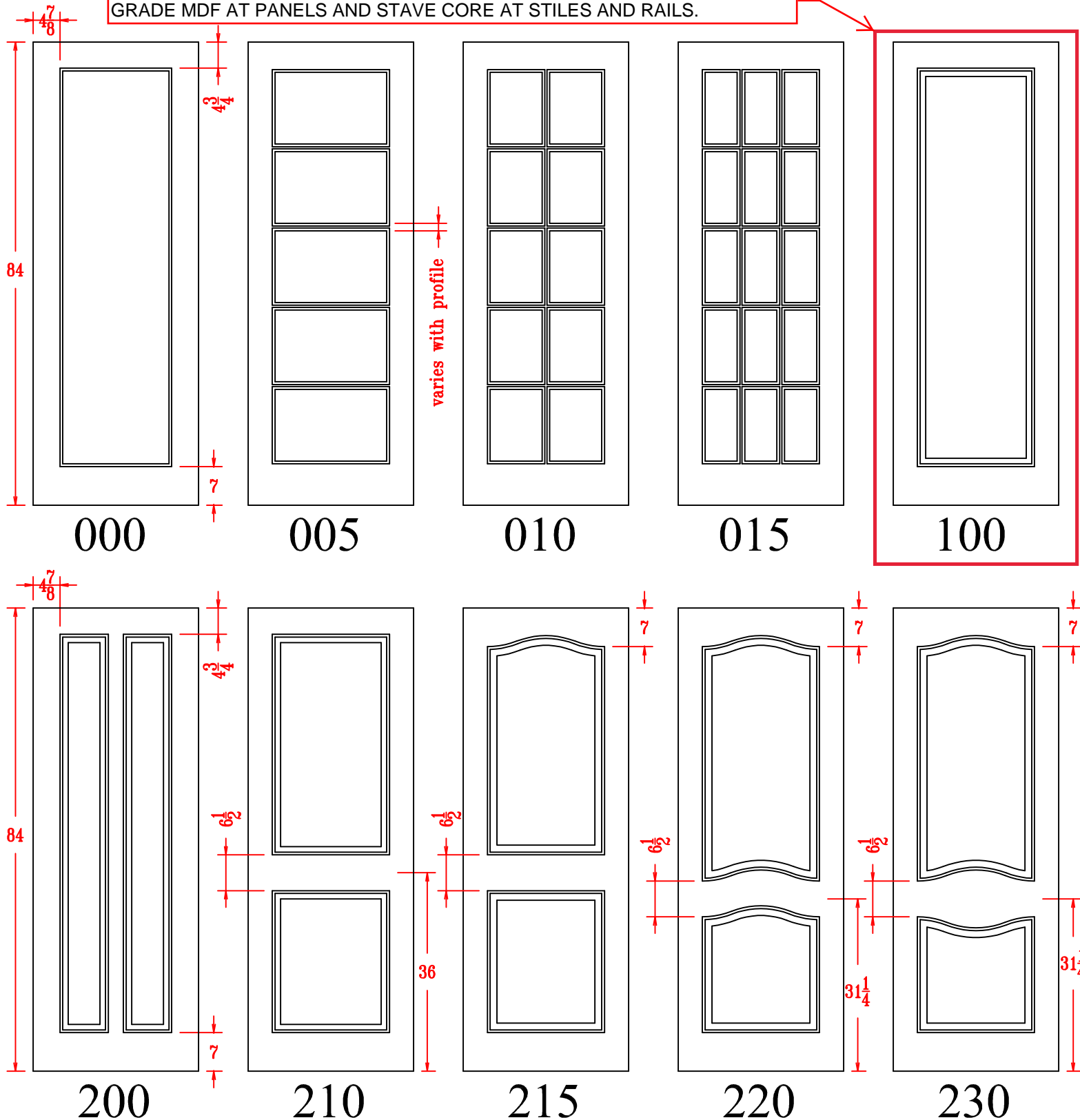


SELECT DOOR

artistry and attention to detail

exterior door specifications

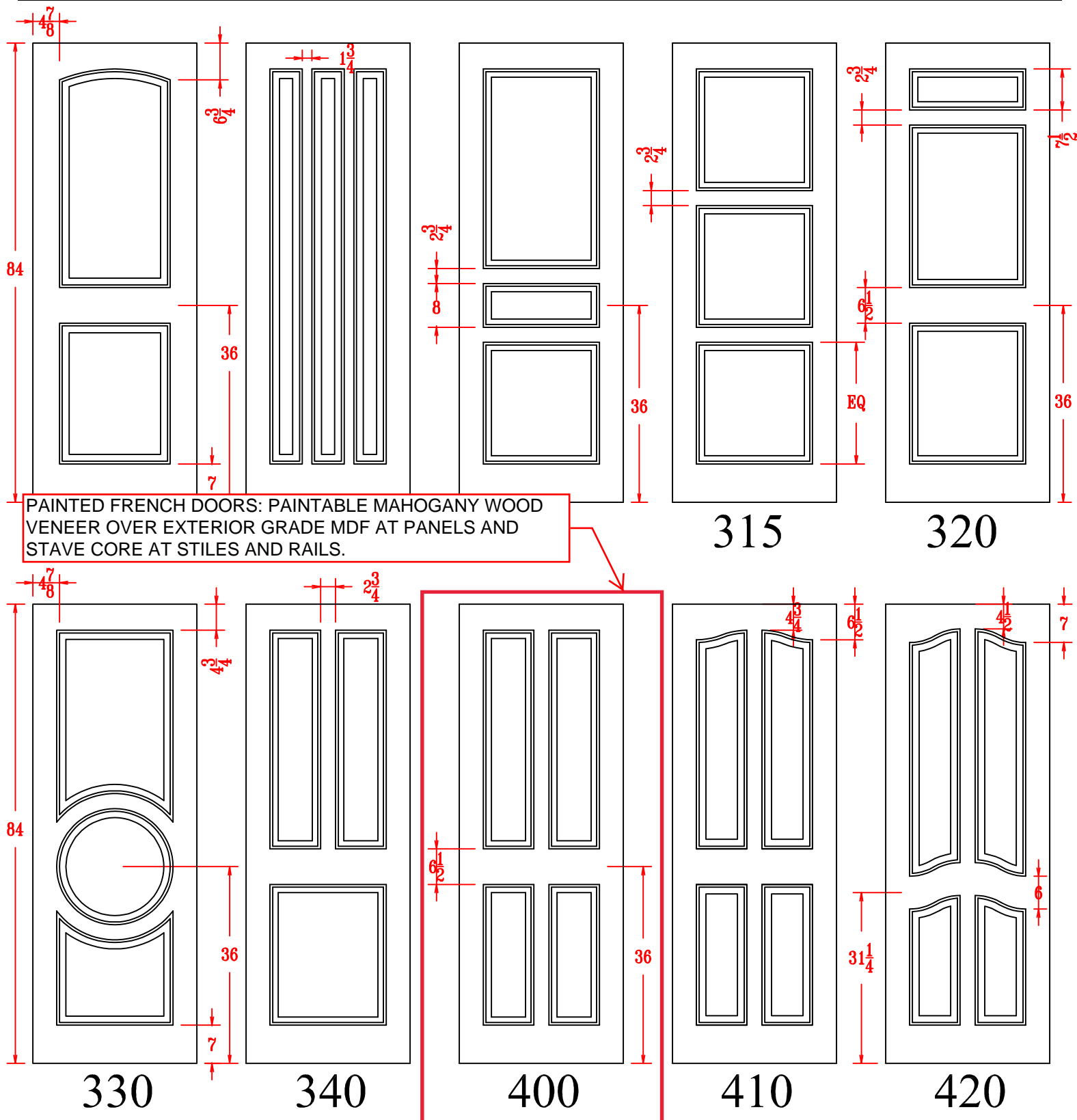
STAINED DOOR: WHITE OAK STAINED WOOD VENEER OVER EXTERIOR
GRADE MDF AT PANELS AND STAVE CORE AT STILES AND RAILS.





SELECT DOOR
artistry and attention to detail

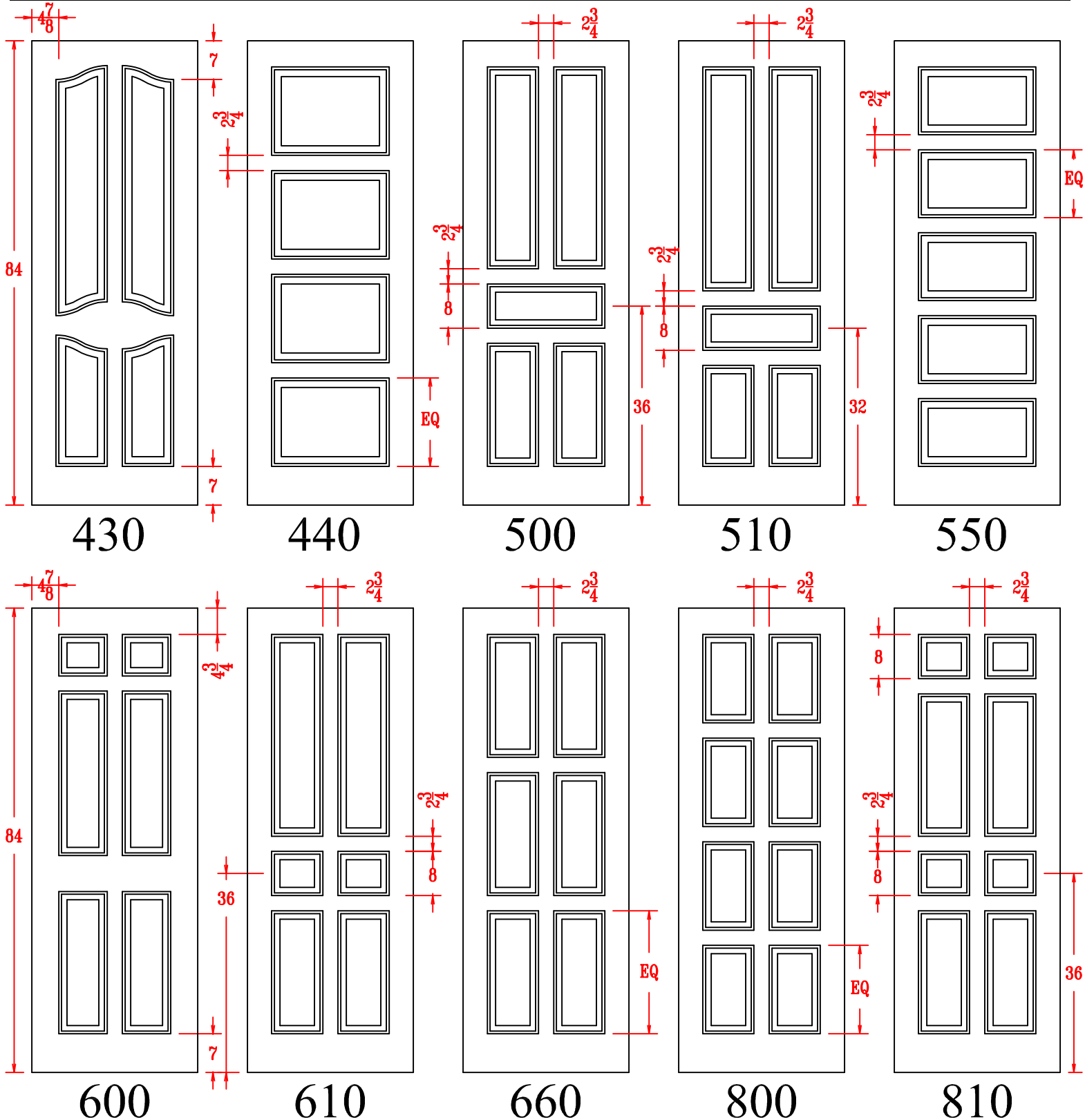
exterior door specifications





SELECT DOOR
artistry and attention to detail

exterior door specifications





TIMBERLANE
308: Carriage Collection Garage Door

Classic elegance. Our 308 carriage style garage door can be elevated in many ways, all of which are sure to compliment your home's facade. Customize your look by choosing one of our available garage door panel designs and window options.

Available In:

[Vintage \(Wood Core with Overlay\)](#)



TIMBERLANE FP2: Flat Panel Shutter with CB Trim

A simple, clean, and smart flat panel with a graceful trim to transition the panel into the shutter frame. This simple design is known for its simple elegance.

Cross Section:



Available In:

Endurian (Exclusive PVC), Premium Wood

Shutter Specifications

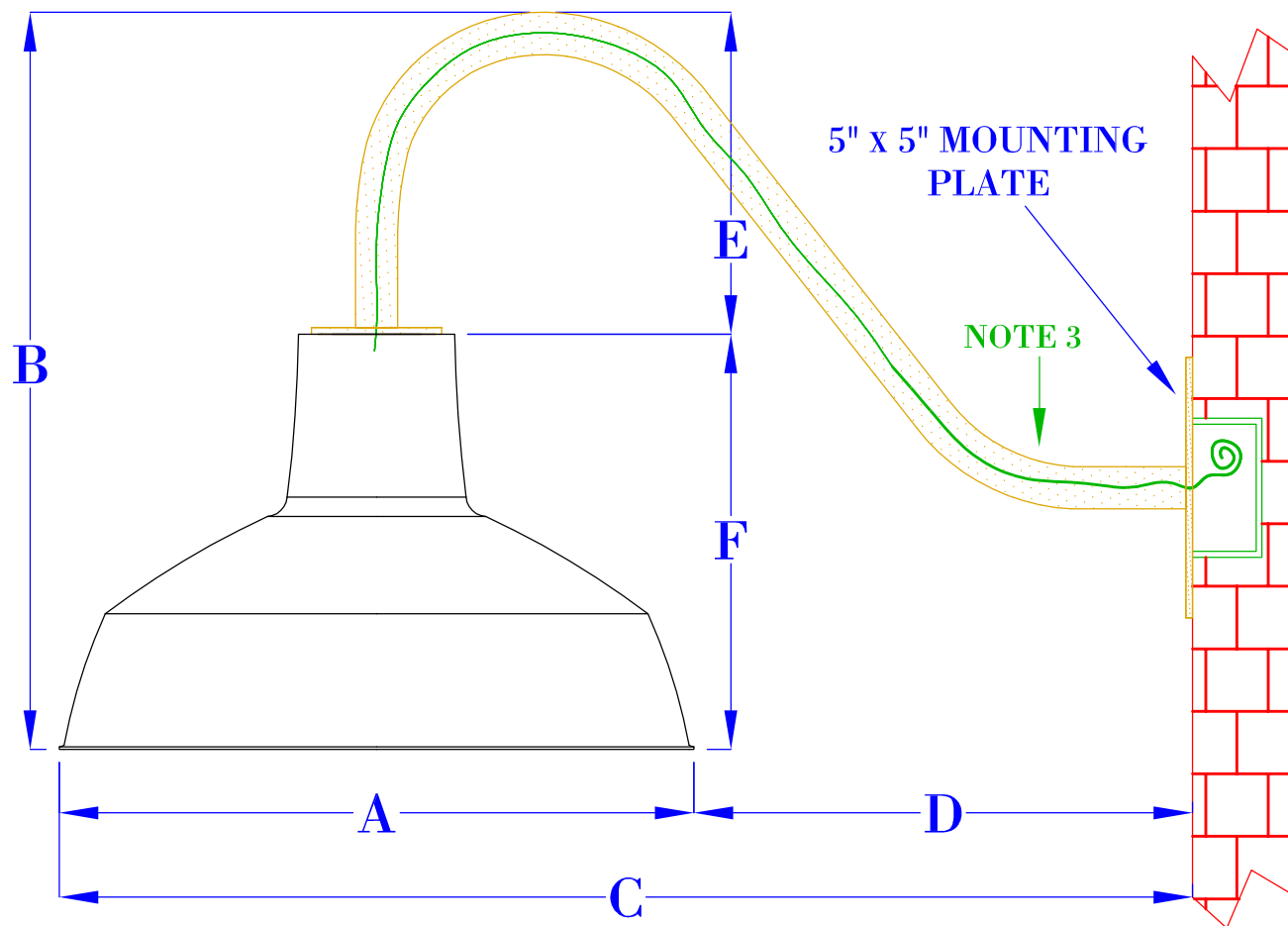


INDUSTRIAL LIGHTING

FARMHOUSE GOOSENECK BRACKET

Over the past decade, industrial inspired residential and commercial designs continue to trend across all sectors of the design world. Bevolo® strives to not only produce exceptionally well-crafted products but to also consistently expand and diversify product offerings based on consumer needs, developing technologies and industry trends. The Bevolo® Farmhouse on Projection Bracket combines the classic look of a traditional barn light with Bevolo's® executed design and quality craftsmanship. Available in electric only.

Standard Lantern Sizes		
Height	Width	Depth
8.0"	12.5"	12.5"



NOTES:

1. MOUNTING HARDWARE SUPPLIED BY OTHERS
2. FIXTURES ARE HANDCRAFTED. DIMENSIONS MAY VARY PLUS OR MINUS $\frac{1}{4}$ "
3. ELECTRIC LIGHTS SUPPLIED WITH 18/2 WIRE WITH GROUND

SIZE:	14"
A:	12 $\frac{1}{2}$ "
B:	14 $\frac{1}{4}$ "
C:	21 $\frac{3}{4}$ "
D:	9 $\frac{1}{2}$ "
E:	6 $\frac{1}{4}$ "
F:	8"

BEVOLO GAS & ELECTRIC LIGHTS

LIGHT:	FARMHOUSE	DATE:	APP. BY:	MAJ	COPYRIGHT 2013, BEVOLO GAS & ELECTRIC LIGHTS. THIS DRAWING AND ANY DESIGN OR DATA CONTAINED THEREIN ARE CONSIDERED PROPERTY OF BEVOLO GAS AND ELECTRIC LIGHTS. NEITHER THE DRAWING NOR ITS CONTENT MAY BE COPIED, REPRODUCED, OR EDITED TO A LIKENESS WITHOUT THE WRITTEN CONSENT OF BEVOLO GAS AND ELECTRIC LIGHTS.
BRACKET:	GOOSENECK	6-13-13	REVISION:	1	

DRW BY: JJG

DATE: APP. BY: MAJ

6-13-13 REVISION: 1

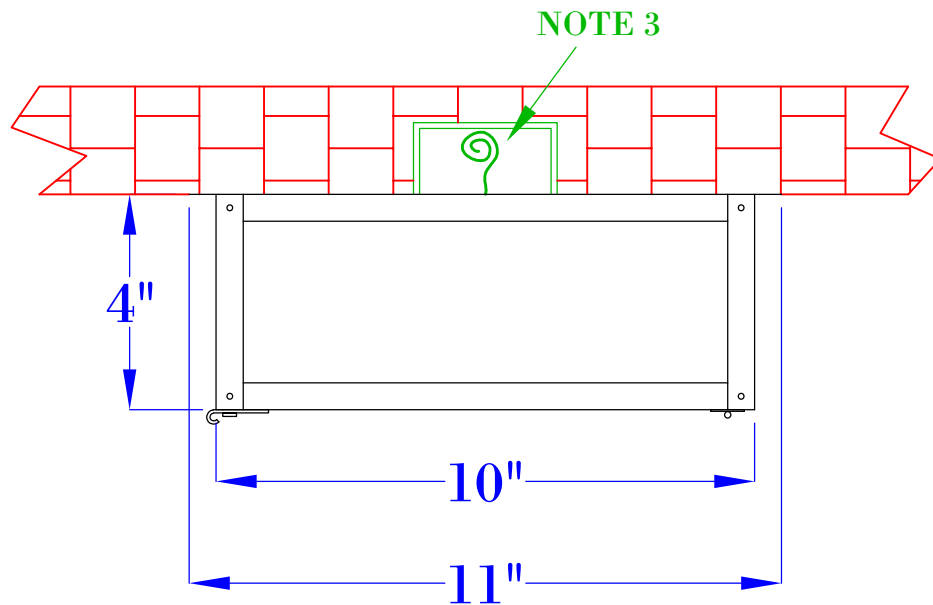


SIGNATURE SERIES

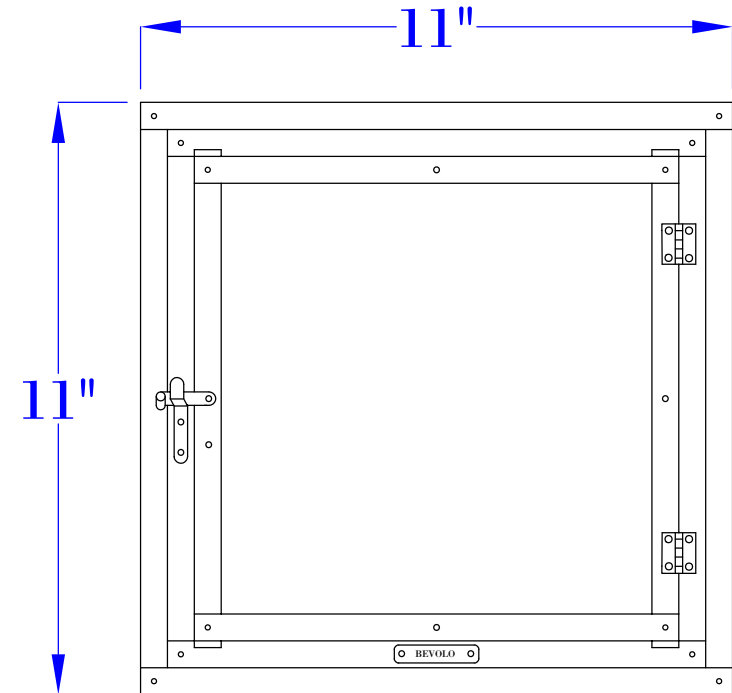
FOUR-SIDED CEILING FLUSH

This handmade flush mount electric light brings some discreet beauty and illumination to any area.

Standard Lantern Sizes		
Height	Width	Depth
4.0"	11.0"	11.0"



SIDE VIEW
(NTS)



BOTTOM VIEW
(NTS)

NOTES:

1. MOUNTING HARDWARE SUPPLIED BY OTHERS
2. FIXTURES ARE HANDCRAFTED. DIMENSIONS MAY VARY PLUS OR MINUS $\frac{1}{4}$ "
3. ELECTRIC LIGHTS SUPPLIED WITH 18/2 WIRE WITH GROUND

BEVOLO GAS & ELECTRIC LIGHTS

DRW BY:

JJG

LIGHT:

CEILING LIGHT

DATE:

APP. BY:

COPYRIGHT 2020, BEVOLO GAS & ELECTRIC LIGHTS. THIS DRAWING AND ANY DESIGN OR DATA CONTAINED THEREIN ARE CONSIDERED PROPERTY OF BEVOLO GAS AND ELECTRIC LIGHTS. NEITHER THE DRAWING NOR ITS CONTENT MAY BE COPIED, REPRODUCED, OR EDITED TO A LIKENESS WITHOUT THE WRITTEN CONSENT OF BEVOLO GAS AND ELECTRIC LIGHTS.

BRACKET:

FLUSH MOUNT

9-9-20

REVISION:

2



HI-LITE MFG. CO., INC

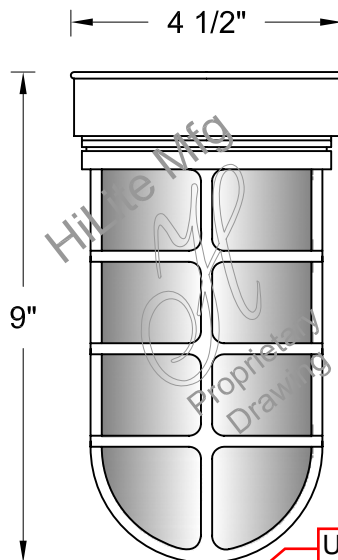
13450 Monte Vista Avenue
Chino, California 91710
Telephone: (909) 465-1999
Toll Free: (800) 465-0211
Fax: (909) 465-0907
web: www.hilitemfg.com
e-mail: sales@hilitemfg.com

H-MNCGU-FB Vapor Jar Collection

Job Name:

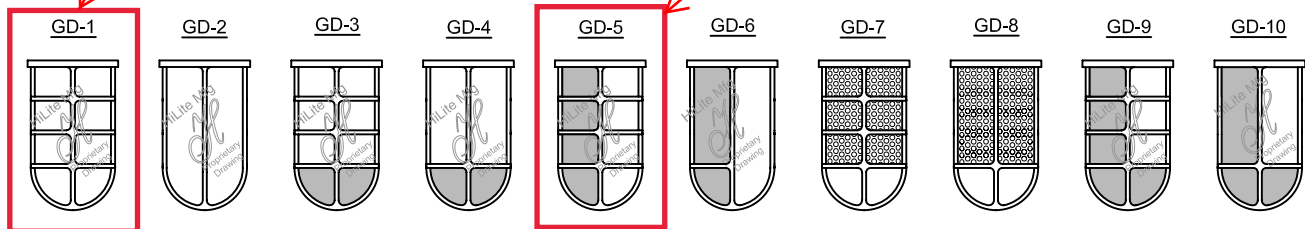
Type:

Quantity:



USE FOR UNDER
DECK LIGHTING

USE FOR SCONCES



FINISH -Offered in exceptional finishes, comprised of: polyester/polished powder coat, baking enamel liquid, raw metal, or galvanized finishes.

Standard Finishes are: 91(Black), 93(White), 95(Dark Green), 96(Galvanized), BR47(Powder Coat Rust), BK01(Black Texture), GN20(Powder Coat Patina).

Upgraded Finishes are: 29, 66, 82, 90, 92, 94, 97, 99, 100, 103, 104, 105, 110, 112, 113, 114, 115, 117, 118, 119, 120, 127, 128, 129, 133, 134, 135, 136, 98, 101, 102, 137, 138, 139, 140, 121, 122, 123, 124, 125, 126, 11, 01, 22, 25, 33, 77, 89, 24, 44, 48, 49, 15, 16.

For interior finish of fixture refer to color chart on pages 344-348.

MOUNTING - Wall, Flush or Column mount.

ACCESSORIES - Cast guard, Wire guard and Acorn globe available.

SOCKETS/LAMPS - Available in:

Incandescent

- rated 100 watt max/120 volt, medium base.

Compact Fluorescent(CFL)

- rated 13/18/26 watt max/120/277 volt, GX24Q base.

Metal Halide(MH)

- rated 35/50 watt max/120/208/240/277 volt, medium base, 4KV socket.

High Pressure Sodium(HPS)

- rated 50 watt max/120/277 volt, medium base.

LENS OPTION - CLR(Clear), FR(Frost), RD(Red), BL(Blue), GRN(Green), AM(Amber) and AMC(Amber Crackle) available.

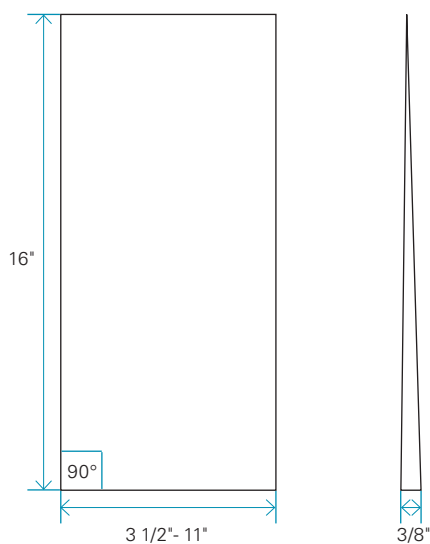
MADE IN THE U.S.A.

Suitable for wet location.



Individual Shingles

RESQUARED AND REBUTTED. NATURAL (KILN DRIED) OR FACTORY-STAINED.



STAIN	GRADE	BUTT THICKNESS	WIDTH	NOMINAL LENGTH	INSTALLATION
Solid stain 2 coats	Chatham (Free of knots on the visible part - up to 6 in.)	3/8"*	3 1/2"-11"*	16"*	Sidewall use
Semi-transparent Spice series	Chatham (Free of knots on the visible part - up to 6 in.)	3/8"*	3 1/2"-11"*	16"*	Sidewall use

General Specifications

SPECIES:

- Eastern White Cedar – *Thuja occidentalis*

MANUFACTURING

- Stellite-tipped blades: minimize raised grain
- Kiln-dried to 12% - 16% moisture content

PACKAGING AND COVERAGE

- Each box covers around 25 sq. ft at 5" exposure.

AVAILABLE COLOURS

- Maibec solid stain colour chart
- Semi-transparent Spice series
- Unlimited choice of solid colours thanks to our TrueMatch® system

FACTORY-STAINING

- Every shingle is factory-coated on all sides in a controlled environment for maximum stain absorption and retention. This also provides increased protection from the damaging effects of the sun and the elements.
- Following the stain application, the shingles are sent through a state of the art drier for

curing. The product of European technology, this drier cures the stain from the inside out. The shingles are then cooled down and packaged. This unique system increases the durability of the product once installed.

- Low-volatile organic compounds (VOCs) water-based stains.

For exterior use only.

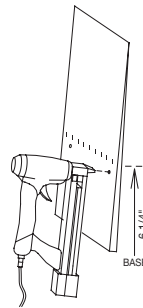
Individual Shingles

Installation

FASTENING REFERENCE LINE

Maibec shingles feature a fastening reference line found 6 1/4" from the base of the shingle. For the 5" required shingle exposure, fasten just below the reference line to respect the installation requirement.

See the Maibec Shingles installation guides to know all installation requirements.



Installation System

STAPLES

- Stainless steel or aluminum staple with minimum 7/16" crown, minimum 16 gauge
- Two fasteners per shingle, regardless of its width

NAILS

- Stainless steel or hot dipped galvanized
- Ring shank blunt tip nail with minimum 7/32" head
- Two fasteners per shingle, regardless of its width

How to Calculate

HOW TO CALCULATE THE AMOUNT OF SIDING NEEDED

Example – Area to cover: 1,000 ft²

For 5" exposure, add 3% to the area to cover

$$1,000 \text{ ft}^2 \times 1.03 = 1,030 \text{ ft}^2$$

$$1 \text{ box} = 25 \text{ ft}^2$$

$$1,030 \text{ ft}^2 = 41 \text{ boxes}$$

WARRANTY* – SHINGLES SOLID STAIN



WARRANTY* – SHINGLES "SPICE" SERIES

