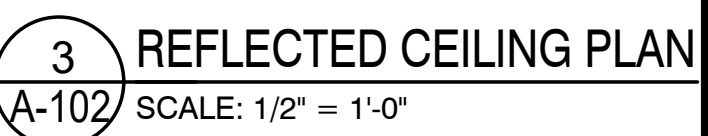
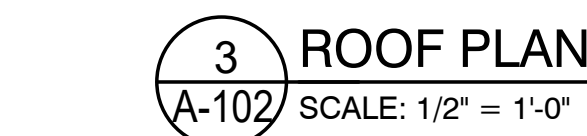



The map is a plat map of a residential subdivision. It shows a grid of streets and lots. The streets are labeled in red text: Brookside Ln, Ashford Ave, Irvingston St, Bellevue Ave, Florence Ave, and Scott St. The lots are numbered in black text. Lot 3 is highlighted with a yellow border and diagonal hatching. Lot 3 is located at the intersection of Irvingston St and Ashford Ave. The map also shows lot dimensions and street names in red text. For example, Lot 3 is 100.93-18 on Ashford Ave and 100.93-20 on Irvingston St. The map is a technical drawing with precise lines and text.





|   |  |
|---|--|
|  | DATE: 10/10/2020<br>PROJECT #: 10-2020<br>DRAWN BY: RU<br>CHECK BY: AY<br><hr/> DWG No.<br><div style="font-size: 2em; font-weight: bold;">A-102.00</div> <hr/> SHEET 1 of 1 |
|---|--|



## REVISIONS

[illegible]

## EXTERNAL STAIR ROOF ADDITION

288 ASHFORD AVE.  
DOBBS FERRY NY

# ISOMETRIC, SECTIONS, AND DETAILS

-SCAN JOB STICKER

MC DOB IDENTIFICATION NUMBER

DATE: 10/10/2020

PROJECT #:10-2020  
SSANN, SA, PH



DRAWN BY: RU  
CHECK BY: AY



DWG No. \_\_\_\_\_

104 00

01937 A - 104 .00

SHEET 1 of 1

\_\_\_\_\_

