

Job:

Approval:

Type:

VISION 3

LIGHTING

MR16 Staff Light **MODEL PA11**

12V 50W Max., MR16 Halogen

12V 7.5W, 12/24V 6W, or 12V 10W LED

Specifications

Material

Available in machined 6061-T6 aluminum or C36000 brass. All hardware 18-8 stainless steel.

Head

Machined head comes in two styles: Side Mount and Rear Mount. (See illustration for aiming capability of each head style.)

Stem

1" diameter machined stem comes in various stem lengths. Maximum allowable stem length depends on mount option (see **Ordering Information**). Soil type and installation manner may limit safe stem length further. To prevent fixture from toppling over, these factors must be taken into account when choosing stem length or mount type.

Knuckle

Machined knuckle allows for a full range of aiming positions. Double taper design (U.S. Patent #6,966,679) allows fixture to hold position during aiming and ensures a solid lock when tightened. Integral LED models have a molded silicone wire seal to prevent water entry at knuckle. Available Rotate and Lock option (U.S. Patent #7,108,405 & #7,458,552) allows for full 360° horizontal aiming and locking.

Cap

Machined caps lock in place with one 18-8 stainless steel set screw, and are sealed to the body with a high temperature silicone O-ring. Regress Lens caps have drain holes for water drainage from top of lens if mounted in the up position. 'Flush Lens' cap styles incorporate a stepped lens to reduce the collection of water and debris on the lens. All caps accept up to three internal accessories, held in place by a stainless steel clip.

Finish

TGIC thermo set polyester powder coat paint available in 14 standard colors. On aluminum model, finish is applied over a corrosion resistant, hexavalent chromium free, RoHS compliant coating. Aluminum model available in one



additional metal finish: Clear Anodized. Brass model available in three additional metal finishes: Natural, Polished, and Aged.

Lens

Tempered, clear lens, secured to cap with a high temperature, UV curing, silicone adhesive.

Socket

GY-6.35 porcelain socket with 600V, 250°C, PTFE coated 18 ga leads.

Lamps

MR16 Halogen: 12V bi-pin up to 50W (maximum allowable wattage depends on model and application. See **Certification** heading).

Integral LED: 12-24V AC/DC 6W (400lm) or 12V AC/DC 10W (700lm) LED options include integral driver with High/Low switch for 35W/20W (6W) or 50W/35W (10W) halogen equivalent outputs. LED Modules are field replaceable and feature replaceable lenses, an L70 > 60,000 hrs., dynamic transformer recognition, phase dimming (see Transformer and Dimmer Compatibility List), and patented LEDSense® thermal management.

Retrofit MR16 LED: 12V 7.5W (600lm) bi-pin retrofit Soraa™ MR16 LED lamp with specially engineered heat sink mount to ensure proper heat transfer to body. Note: Retrofit LED will overheat without supplied heat sink mount.

Certification

CSA tested & certified to US and Canadian safety standards for the following applications (except for 230V option):

Wet location landscape use (UL1838):

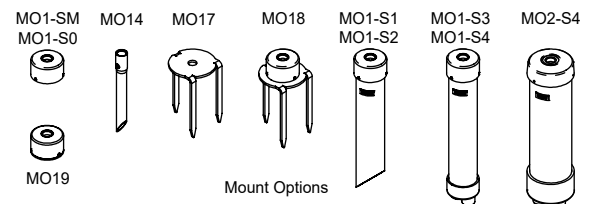
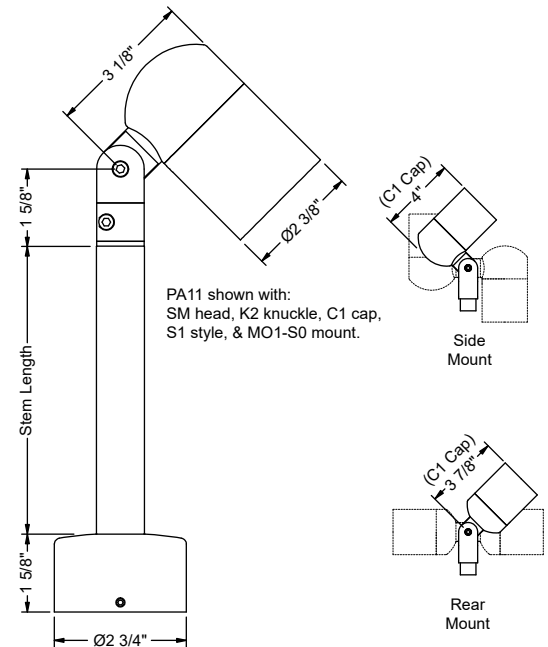
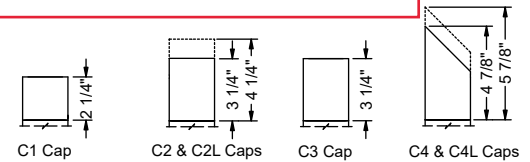
PA11A - 50W Max. MR16 Halogen lamp.

PA11B - 35W Max. MR16 Halogen lamp.

LED options can be used in all models and applications.

All ratings subject to change without notice. See website or contact V3 for most current info.

54 Clinton - Path light / Bollard Light



Ordering Information

S1									
Model ¹	Head	Knuckle	Style	Mount ³	Input Voltage	Lamp	Lens Accy ⁶	Filter ⁶	Louver ⁶
PA11A - Aluminum PA11B - Brass	SM - Side Mount RM - Rear Mount ²	K1 - Standard K2 - Rotate & Lock	S1 - Straight	SN - Nipple Only (No Mount & No Cap) ⁴ MO1-S0 - No Mount (MO1 Cap Only, 36" max. stem) MO1-SM - MO1 Surface Mount (36" max. stem) MO1-S1-12 - 12" MO1 Stake Mount (36" max. stem) MO1-S1-18 - 18" MO1 Stake Mount (36" max. stem) MO1-S2-12 - 12" MO1 Adj. Stake Mount (12" stem only) MO1-S2-18 - 18" MO1 Adj. Stake Mount (18" stem only) MO1-S2-24 - 24" MO1 Adj. Stake Mount (24" to 48" stems only) MO1-S3-12 - 12" MO1 Junction w/ Transformer (36" max. stem) ⁵ MO1-S3-18 - 18" MO1 Junction w/ Transformer (36" max. stem) ⁵ MO1-S4-12 - 12" MO1 Junction Mount (36" max. stem) MO1-S4-18 - 18" MO1 Junction Mount (36" max. stem) MO2-S4-12 - 12" MO2 Junction Mount (48" max. stem) MO14 - MO14 Brass Stake Mount (24" max. stem) MO17 - MO17 Spike Mount (24" max. stem) MO18 - MO18 Spike Mount w/ Cap (24" max. stem) MO19 - MO19 Surface Mount w/ Cap (36" max. stem)	120 - 12V 120 - 120V ⁵ 230 - 230V ^{5,6} 277 - 277V ^{5,6}	Integral LED (3000K, >80 CRI): ^{4,7,8} 116 - 6W, 12° 117 - 6W, 21° 118 - 6W, 41° 141 - 10W, 12° 142 - 10W, 21° 143 - 10W, 41° Retrofit MR16 LED (3000K, 90 CRI): ^{7,8,9} 155 - 7.5W, 10° 156 - 7.5W, 25° 157 - 7.5W, 36° MR16 Halogen: ¹ 0 - None 01 - ESX, 20W, 12° 02 - BAB, 20W, 40° 03 - FRA, 35W, 12° 04 - FRA, 35W, 23° 05 - FMW, 35W, 40° 09 - EXT, 50W, 13° 10 - EXZ, 50W, 26°	0 - None L1 - Spread L2 - Linear L3 - Softening	0 - None F1 - Red F2 - Blue F3 - Light Blue F4 - Green F5 - Amber F6 - Pink F7 - Mercury Vapor	0 - None H1 - Hex
Cap Style									
Stem									
Standard Lens:									
C1 - Flush C2 - Regress Lens C2L - Regress Lens, Long C3 - Regress Lamp C4 - 45° Angled C4L - 45° Angled, Long									
Flush Lens:									
C1F - Flush C2F - Regress Lens C2LF - Regress Lens, Long C3F - Regress Lamp C4F - 45° Angled C4LF - 45° Angled, Long									
Finish									
Powder Coat Finishes:									
BLT - Textured Black BNT - Textured Bronze BAT - Textured Bark GRT - Textured Green GNT - Textured Granite SAT - Textured Sand PAT - Textured Patina EAT - Textured Earth									
BL - Black BN - Bronze WI - White SI - Silver GY - Grey BE - Beige									
Metal Finishes:									
CLA - Clear Anodized (PA11A only) NAT - Natural (PA11B only) POL - Polished (PA11B only) AGE - Aged (PA11B only)									

Integral LED (3000K, >80 CRI):^{6,7,8}

116 - 6W, 12° 141 - 10W, 12°

117 - 6W, 21° 142 - 10W, 21°

118 - 6W, 41° 143 - 10W, 41°

Retrofit MR16 LED (3000K, 90 CRI):^{7,8,9}

155 - 7.5W, 10°

156 - 7.5W, 25°

157 - 7.5W, 36°

MO19 - MO19 Surface Mount w/ Cap (36" max. stem)

MO14 - MO14 Brass Stake Mount (24" max. stem)

MO17 - MO17 Spike Mount (24" max. stem)

MO18 - MO18 Spike Mount w/ Cap (24" max. stem)

MO19 - MO19 Surface Mount w/ Cap (36" max. stem)

MO14 - MO14 Brass Stake Mount (24" max. stem)

MO17 - MO17 Spike Mount (24" max. stem)

MO18 - MO18 Spike Mount w/ Cap (24" max. stem)

MO19 - MO19 Surface Mount w/ Cap (36" max. stem)

Notes:

- Allowable wattage depends on model. See **Certification** heading.
- Rear Mount head has limited adjustability and should be used for up lighting only.
- See mount spec. sheets for mount details.
- SN mount option requires that a separate mount be used.
- 120, 230, and 277 voltage options only available with the MO1-S3-12 and MO1-S3-18 mount options.
- Only two lens accessories can be used with Integral LED.
- Other color temperatures available as a special order.
- LED options only available with 12 or 120 Input Voltage options. Only power LED lamp options with approved transformers (contact V3 for mount, transformer, and dimmer compatibility info).
- Use only approved Retrofit MR16 LED lamps and supplied heat sink mount, otherwise LED may overheat.
- Specifications, certifications, and ordering information are subject to change. Please check website for latest specification sheets.

Example: PA11A - BN - SM - K2 - C2 - S1 - 18 - MO1-S3-12 - 120 - 02 - L1 - 0 - H1

©2011 - 2020 Vision3 Lighting®

P.O. Box 607, Fowler, CA 93625

(559) 834-5749

(559) 834-4779 fax

www.vision3lighting.com

revision 8/7/20

BRICK STAR (MR16 LAMP - CORE DRILL)

IP65 RATED

DATE: PROJECT: TYPE: 54 Clinton - In-wall / In-riser light

CATALOG NUMBER LOGIC:



*Lamp details available on the next page.

CATALOG NUMBER LOGIC

Example: B - CD - BQ - MR - 359 - WHP

MATERIAL

(Blank) - Aluminum B - Brass

INSTALLATION

CD - Core Drill

SERIES

BQ - Brick Star

SOURCE

MR - MR16 Lamp

LAMP TYPE

0 - MR16 HALOGEN LAMP (Furnished by others)

MR16 LED (This choice requires lamp number selection)*

FINISH (See page 2 for full-color swatches)

Standard Finishes (BZP, BZW, BLP, BLW, WHP, WHW, SAP, VER)

Premium Finish (ABP, AMG, AQW, BCM, BGE, BPP, CAP, CMG, CRI, CRM, HUG, MDS, NBP, OCP, RMG, SDS, SMG, TXF, WCP, WIR)

Also available in RAL Finishes

Brass Finishes (MAC, POL, MIT)

B-K LIGHTING

MADE IN THE USA

559.438.5800 | INFO@BKLIGHTING.COM | BKLIGHTING.COM

THIS DOCUMENT CONTAINS PROPRIETARY INFORMATION OF B-K LIGHTING, INC. AND ITS RECEIPT OR POSSESSION DOES NOT CONVEY ANY RIGHTS TO REPRODUCE, DISCLOSE ITS CONTENTS, OR TO MANUFACTURE, USE OR SELL ANYTHING IT MAY DESCRIBE. REPRODUCTION, DISCLOSURE OR USE WITHOUT SPECIFIC WRITTEN AUTHORIZATION OF B-K LIGHTING, INC. IS STRICTLY FORBIDDEN.

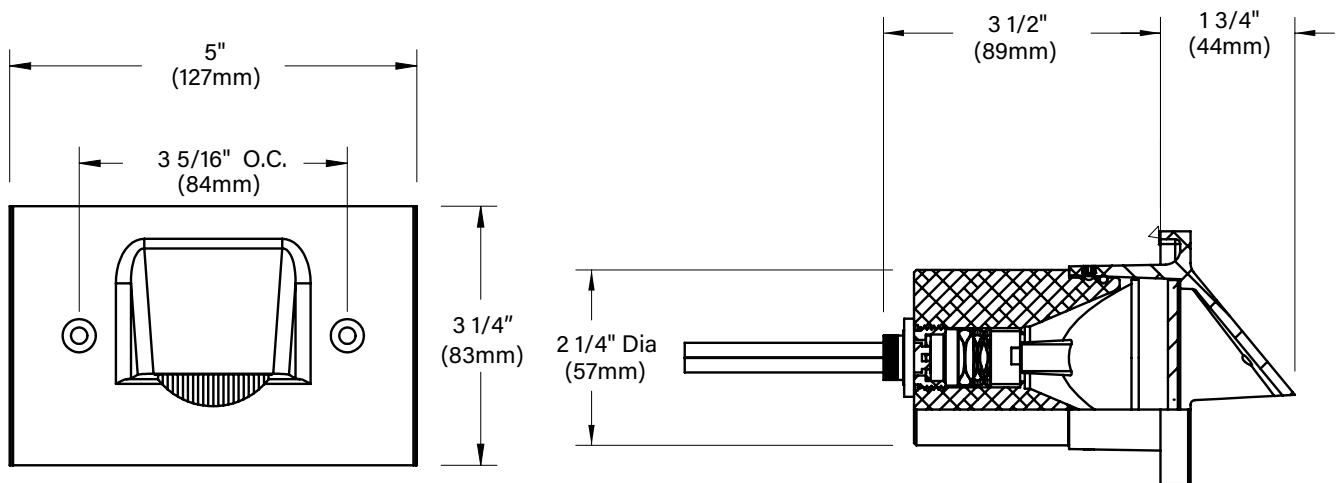
04/07/2020 SKU-366
SUB-1456-00

DATE:

PROJECT:

TYPE:

54 Clinton - In-wall / In-riser light
(cont.)

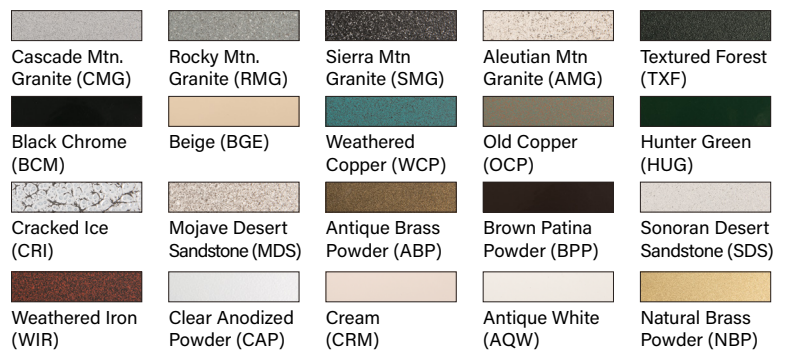


STANDARD FINISHES



[Click Here](#) to view larger, full-color swatches of all available finishes on our website.

PREMIUM FINISHES

**B-K LIGHTING****MADE IN THE USA**559.438.5800 | INFO@BKLIGHTING.COM | BKLIGHTING.COM

DATE: PROJECT: TYPE: 54 Clinton - Flood light

CATALOG NUMBER LOGIC:



**Designed for use with LED transformer. Requires magnetic low voltage dimmer.*

***Please see Adjust-e-Lume photometry to determine desired intensity.*

****The 360SL cost is already included in the price of UPM, UPM dual, and Power Canopy.*

CATALOG NUMBER LOGIC

Example: B - DS - LED - e64 - SP - A7 - BZP - 12 - 11 - A - 360SL

MATERIAL

(Blank) - Aluminum B - Brass S - Stainless Steel

SERIES

DS - Delta Star

SOURCE

LED - with Integral Dimming Driver (25W min. load when dimmed)*

LED TYPE

e64 - 7W LED/2700K e66 - 7W LED/4000K

e65 - 7W LED/3000K e74 - 7W LED/Amber

OPTICS

NSP - Narrow Spot (13°) MFL - Medium Flood (23°)

SP - Spot (16°) WFL - Wide Flood (31°)

ADJUST-E-LUME® OUTPUT INTENSITY**

A9 (Standard), A8, A7, A6, A5, A4, A3, A2, A1

FINISH (See page 2 for full-color swatches)

Standard Finishes (BZP, BZW, BLP, BLW, WHP, WHW, SAP, VER)

Premium Finish (ABP, AMG, AQW, BCM, BGE, BPP, CAP, CMG, CRI, CRM, HUG, MDS, NBP, OCP, RMG, SDS, SMG, TXF, WCP, WIR)

Also available in RAL Finishes

Brass Finishes (MAC, POL, MIT)

Stainless Steel Finishes (MAC, POL)

LENS TYPE

12 - Soft Focus 13 - Rectilinear

SHIELDING

11 - Honeycomb Baffle

CAP STYLE

A - 45°

B - 90°

C - Flush Lens

D - 45° Less Weephole (Interior use only)

E - 90° Less Weephole (Interior use only)

F - 90° with Flush Lens

OPTIONS

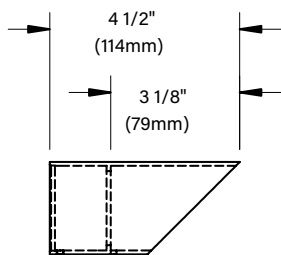
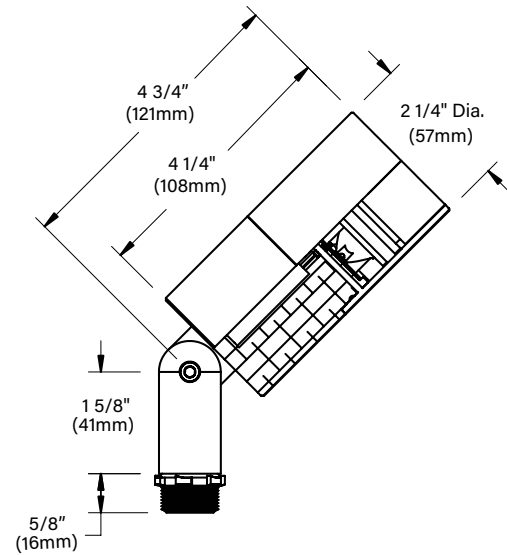
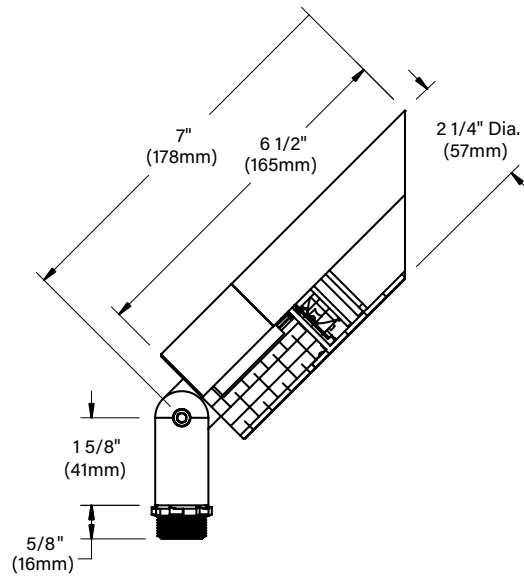
360SL - Knuckle Mounting System***

DATE:

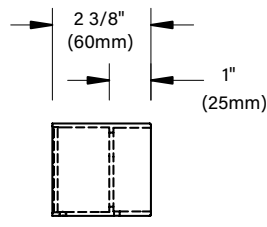
PROJECT:

TYPE:

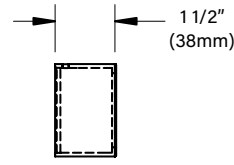
54 Clinton - Flood light (cont.)



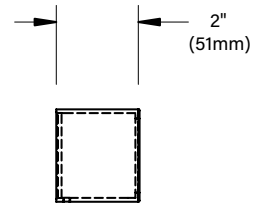
A/D CAP



B/E CAP



C CAP



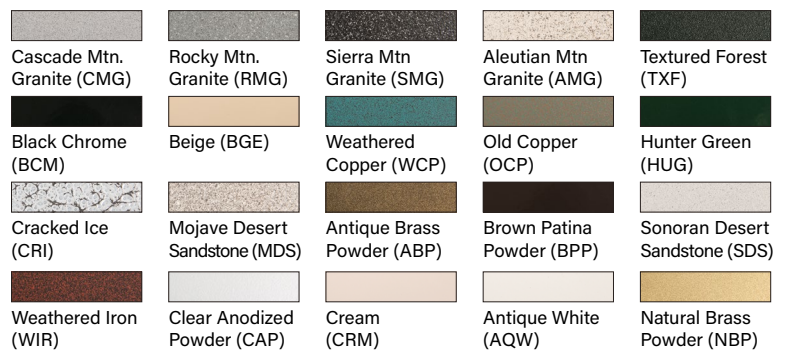
F CAP

STANDARD FINISHES



[Click Here](#) to view larger, full-color swatches of all available finishes on our website.

PREMIUM FINISHES

**B-K LIGHTING****MADE IN THE USA**559.438.5800 | INFO@BKLIGHTING.COM | BKLIGHTING.COM