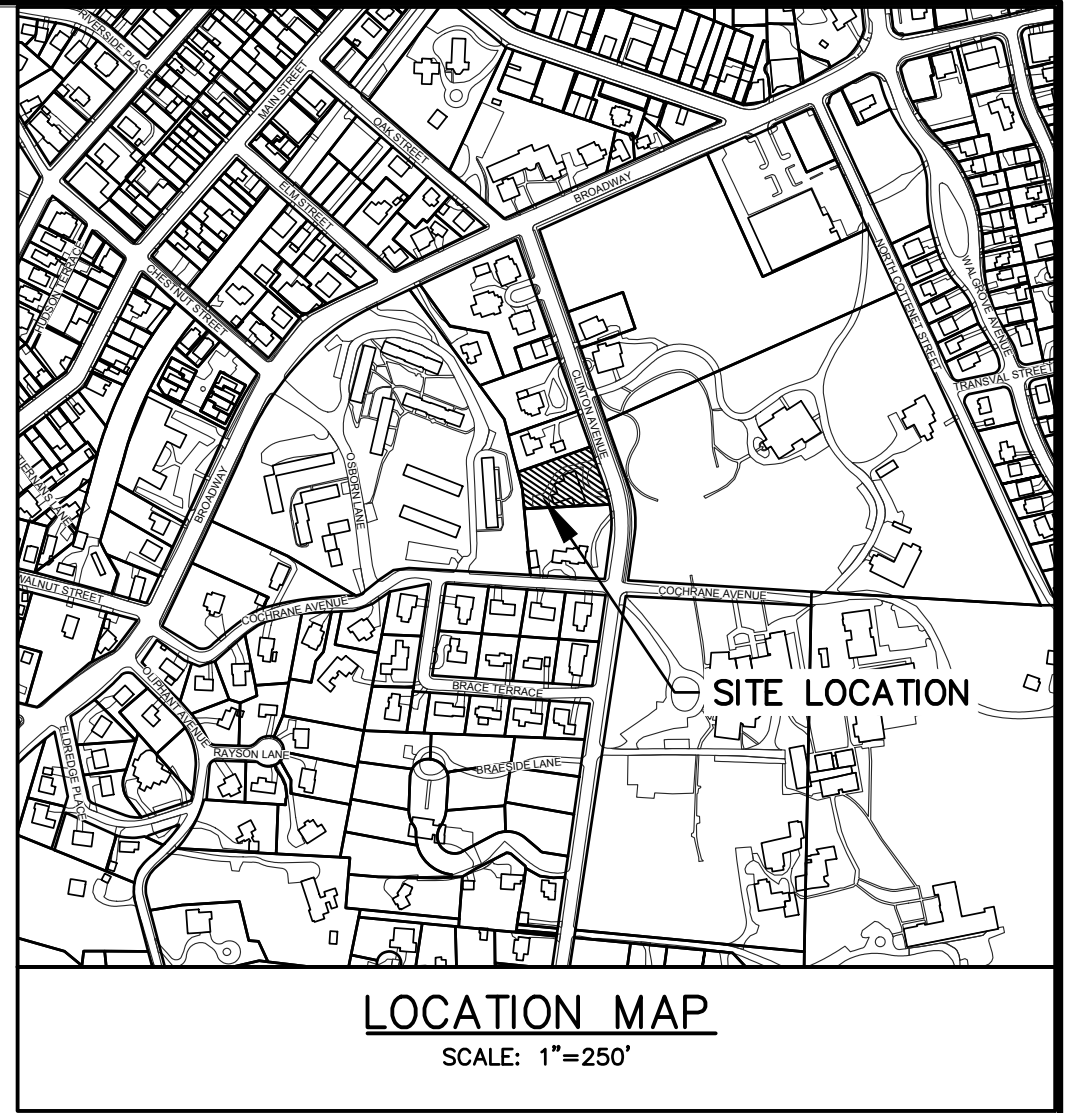


## LEGEND

PROPERTY LINE	---
PROPOSED BELGIAN BLOCK CURB	=====
PROPOSED ASPHALT DRIVEWAY	=====
PROPOSED WALKWAY/PATIO	=====
PROPOSED STONE MASONRY WALL	=====
PROPOSED CONTOUR	526
PROPOSED SPOT GRADE	+526.25
PROPOSED STORM PIPE	=====
PROPOSED DRAIN INLET	☒
PROPOSED TRENCH DRAIN	=====
TEMPORARY INLET PROTECTION	☐ IP
TEMPORARY SILT FENCE	-X-X- (SF)
TEMPORARY CONSTRUCTION FENCE	===== (CF)
TEMPORARY SOIL STOCKPILE AREA	⊕ (S)
TEST PIT LOCATION	TP-1
PROPOSED LIMIT OF DISTURBANCE	----



## GENERAL NOTES:

- THE ENGINEER SHALL NOT BE RESPONSIBLE FOR THE SUPERVISION OF THE CONSTRUCTION.
- NO CHANGES SHALL BE MADE TO THESE PLANS EXCEPT AS PER NYS LAW CHAPTER 987.
- ALL WORK AND MATERIALS SHALL COMPLY WITH ALL APPLICABLE CODES, INCLUDING BUT NOT LIMITED TO A.C.I., AISC, ZONING, AND THE NEW YORK STATE BUILDING CODE.
- ALL CONDITIONS, LOCATIONS AND DIMENSIONS SHALL BE FIELD VERIFIED AND THE ENGINEER SHALL BE IMMEDIATELY NOTIFIED OF ANY DISCREPANCIES.
- ALL CHANGES MADE TO THE PLANS SHALL BE APPROVED BY THE ENGINEER AND ANY SUCH CHANGES SHALL BE FILED AS AMENDMENTS TO THE ORIGINAL BUILDING PERMIT.
- THE CONTRACTOR SHALL SUPERVISE AND DIRECT THE WORK USING HIS BEST SKILL AND ATTENTION. HE SHALL BE SOLELY RESPONSIBLE FOR ALL CONSTRUCTION MEANS, METHODS, TECHNIQUES, SEQUENCES AND PROCEDURES AND FOR COORDINATING ALL PORTIONS OF THE WORK UNDER THE CONTRACT.
- THE CONTRACTOR SHALL BE RESPONSIBLE TO THE OWNER FOR THE ACTS AND OMISSIONS OF HIS EMPLOYEES, SUBCONTRACTORS AND THEIR AGENTS AND EMPLOYEES, AND OTHER PERSONS PERFORMING ANY OF THE WORK UNDER A CONTRACT WITH THE CONTRACTOR.
- SAFETY DURING CONSTRUCTION SHALL BE THE RESPONSIBILITY OF THE CONTRACTOR AND SHALL CONFORM TO ALL LOCAL, STATE AND FEDERAL AGENCIES IN EFFECT DURING THE PERIOD OF CONSTRUCTION.
- THE CONTRACTOR AND HIS SUBCONTRACTORS SHALL MAKE APPLICATION TO RECEIVE ALL NECESSARY PERMITS TO PERFORM THE WORK UNDER CONTRACT. THE CONTRACTOR AND HIS SUBCONTRACTORS SHALL BE LICENSED TO DO ALL WORK AS REQUIRED BY THE LOCAL, COUNTY, AND STATE AGENCIES WHICH MAY HAVE JURISDICTION OVER THOSE TRADES, AND SHALL PRESENT THE OWNER WITH COPIES OF ALL LICENSES AND INSURANCE CERTIFICATES.
- FINAL GRADING AROUND THE BUILDING AREA SHALL SLOPE AWAY FROM THE STRUCTURE.
- ALL WRITTEN DIMENSIONS ON THE DRAWINGS SHALL TAKE PRECEDENCE OVER ANY SCALED DIMENSIONS.
- ADJOINING PUBLIC AND PRIVATE PROPERTY SHALL BE PROTECTED FROM DAMAGE DURING CONSTRUCTION AND DEMOLITION WORK. PROTECTION MUST BE PROVIDED FOR FOOTINGS, FOUNDATIONS, PARTY WALLS, CHIMNEYS, SKYLIGHTS AND ROOFS. PROVISIONS SHALL BE MADE TO CONTROL WATER RUNOFF AND EROSION DURING CONSTRUCTION OR DEMOLITION ACTIVITIES. THE PERSON MAKING OR CAUSING AN EXCAVATION TO BE MADE SHALL PROVIDE WRITTEN NOTICE TO THE OWNERS OF ADJOINING BUILDINGS ADVISING THEM THAT THE EXCAVATION IS TO BE MADE AND THAT THE ADJOINING BUILDING SHOULD BE PROTECTED. SAID NOTIFICATION SHALL BE DELIVERED NOT LESS THAN 10 DAYS PRIOR TO THE SCHEDULED STARTING DATE OF THE EXCAVATION.
- OWNER SHALL INSURE THAT THE INSURANCE PROVIDED BY THE CONTRACTOR HIRED TO PERFORM THE WORK SHALL BE ENDORSED TO NAME HUDSON ENGINEERING & CONSULTING, P.C. AND ANY DIRECTORS, OFFICERS, EMPLOYEES, SUBSIDIARIES, AND AFFILIATES, AS ADDITIONAL INSURED ON ALL POLICIES AND HOLD HARMLESS DOCUMENTS, AND SHALL STIPULATE THAT THIS INSURANCE IS PRIMARY, AND THAT ANY OTHER INSURANCE OR SELF-INSURANCE MAINTAINED BY HUDSON ENGINEERING & CONSULTING, P.C. SHALL BE EXCESS ONLY AND SHALL NOT BE CALLED UPON TO CONTRIBUTE WITH THIS INSURANCE. ISO ADDITIONAL INSURED ENDORSEMENT FORM NUMBER CG2010 1185 UNDER GL. COPIES OF THE INSURANCE POLICIES SHALL BE SUBMITTED TO HUDSON ENGINEERING & CONSULTING, P.C. FOR APPROVAL PRIOR TO THE SIGNING OF THE CONTRACT.
- INDUSTRIAL CODE RULE 753: THE CONTRACTOR SHALL NOTIFY ALL UTILITY COMPANIES 72 HOURS PRIOR TO THE START OF HIS OPERATIONS AND SHALL COMPLY WITH ALL THE LATEST INDUSTRIAL CODE RULE 753 REGULATIONS.

## INSTALLATION & MAINTENANCE OF EROSION CONTROL:

CONSTRUCTION SCHEDULE  
NOTIFY APPROPRIATE MUNICIPAL AGENCY HAVING JURISDICTION AT LEAST 5 DAYS PRIOR TO START.

EROSION CONTROL MEASURES  
INSTALL ALL EROSION CONTROL MEASURES PRIOR TO START OF CONSTRUCTION. CALL FOR INSPECTION FROM THE APPROPRIATE MUNICIPAL AGENCY HAVING JURISDICTION AT LEAST 2 DAYS PRIOR TO FINISH.

INSPECTION BY MUNICIPALITY - MAINTENANCE (TO BE PERFORMED DURING ALL PHASES OF CONSTRUCTION)  
AFTER ANY RAIN CAUSING RUNOFF, CONTRACTOR TO INSPECT HAYBALES, ETC. AND REMOVE ANY EXCESSIVE SEDIMENT AND INSPECT STOCKPILES AND CORRECT ANY PROBLEMS WITH SEED ESTABLISHMENT.  
INSPECTIONS SHALL BE DOCUMENTED IN WRITING AND SUBMITTED TO THE APPROPRIATE MUNICIPAL AGENCY HAVING JURISDICTION.

INSPECTION BY MUNICIPALITY - FINAL GRADING  
REMOVE UNNEEDED SUBGRADE FROM SITE.  
CALL FOR INSPECTION FROM THE APPROPRIATE MUNICIPAL AGENCY HAVING JURISDICTION AT LEAST 2 DAYS PRIOR TO FINISH.

INSPECTION BY MUNICIPALITY - LANDSCAPING  
SPREAD TOPSOIL EVENLY OVER AREAS TO BE SEED. HAND RAKE LEVEL. BROADCAST 1-25 LB. BAG OF JONATHAN GREEN "FASTGROW" MIX OR EQUAL OVER AREA TO BE SEED. APPLY STRAW MULCH AND WATER WITHIN 2 DAYS OF COMPLETION OF TOPSOILING. CALL FOR INSPECTION FROM THE APPROPRIATE MUNICIPAL AGENCY HAVING JURISDICTION AT LEAST 2 DAYS PRIOR TO FINISH.

INSPECTION BY MUNICIPALITY - FINAL LANDSCAPING  
GRASS ESTABLISHED.  
CALL FOR INSPECTION FROM THE APPROPRIATE MUNICIPAL AGENCY HAVING JURISDICTION AT LEAST 2 DAYS PRIOR TO FINISH.

INSPECTION BY MUNICIPALITY - FINAL INSPECTION  
ALL EROSION CONTROL MEASURES REMOVED AND GRASS ESTABLISHED.  
CALL FOR INSPECTION FROM THE APPROPRIATE MUNICIPAL AGENCY HAVING JURISDICTION AT LEAST 2 DAYS PRIOR TO FINISH.

## CONSTRUCTION SEQUENCING:

THE FOLLOWING EROSION CONTROL SCHEDULE SHALL BE UTILIZED:

- INSTALL TREE PROTECTION ON TREES AS NOTED ON PLANS.
  - SELECTIVE VEGETATION REMOVAL FOR SILT FENCE INSTALLATION.
  - INSTALL SILT FENCE DOWN SLOPE OF ALL AREAS TO BE DISTURBED AS SHOWN ON THE PLAN.
  - REMOVE TREES WHERE NECESSARY (CLEAR & GRUB) FOR THE PROPOSED CONSTRUCTION.
  - STRIP TOPSOIL AND STOCKPILE AT THE LOCATIONS SPECIFIED ON THE PLANS (UP GRADIENT OF EROSION CONTROL MEASURES). TEMPORARILY STABILIZE TOPSOIL STOCKPILES (HYDROSEED DURING MAY 1ST THROUGH OCTOBER 31ST PLANTING SEASON OR BY COVERING WITH A TARP(AULIN(S) NOVEMBER 1ST THROUGH APRIL 30TH. INSTALL SILT FENCE AROUND TOE OF SLOPE.
  - INSTALL ADDITIONAL SILT FENCING AS NECESSARY.
  - DEMO EXISTING FEATURE TO BE REMOVED.
  - EXCAVATE AND CONSTRUCT SUBSURFACE EXFILTRATION CHAMBERS PER MANUFACTURER'S RECOMMENDATIONS AND REQUIREMENTS.
  - ROUGH GRADE DRIVEWAY AND INSTALL TRENCH DRAIN AND CATCH BASINS AS WELL AS ALL ASSOCIATED ONSITE PIPING.
  - EXCAVATE AND CONSTRUCT FOUNDATION FOR PROPOSED GARAGE AND ADDITION.
  - CONSTRUCT BUILDING. INSTALL AND CONNECT ALL ROOF DRAIN LEADERS TO PREVIOUSLY INSTALLED EXFILTRATION CHAMBERS.
  - INSTALL CURBING, AND SUB-BASE COURSES. FINE GRADE AND SEED ALL DISTURBED AREAS. SPREAD SALT HAY OVER SEEDED AREAS.
  - INSTALL BITUMINOUS CONCRETE TOP COURSE.
  - CLEAN PAVEMENT, DRAIN LINES, CATCH BASINS, TRENCH DRAIN AND SUBSURFACE EXFILTRATION CHAMBERS.
  - REMOVE ALL TEMPORARY SOIL EROSION AND SEDIMENT CONTROL MEASURES AFTER SITE HAS ACHIEVED FINAL STABILIZATION (80% UNIFORM DENSITY OF PERMANENT VEGETATION OR PERMANENT MULCH/STONE).
- \* SOIL EROSION AND SEDIMENT CONTROL MAINTENANCE MUST OCCUR WEEKLY AND PRIOR TO AND AFTER EVERY 1/2" OR GREATER RAINFALL EVENT.

## SITE NOTES:

- SHOULD ROCK BLASTING BE REQUIRED, A PERMIT APPLICATION IN ACCORDANCE WITH CHAPTER 125 - BLASTING OF THE DOBBS DERRY VILLAGE CODE MUST BE SUBMITTED TO THE VILLAGE BY THE APPLICANT FOR REVIEW/APPROVAL.
- THE VILLAGE ENGINEER MAY REQUIRE ADDITIONAL EROSION CONTROL MEASURES IF DEEMED APPROPRIATE TO MITIGATE UNFORESEEN SILTATION AND EROSION OF DISTURBED SOILS.
- AS-BUILT PLANS OF THE PROPOSED DRAINAGE IMPROVEMENTS SHALL BE SUBMITTED TO THE VILLAGE ENGINEER FOR REVIEW PRIOR TO ISSUANCE OF CERTIFICATE OF OCCUPANCY.
- FILL MATERIAL IMPORTED TO THE SITE SHALL BE CERTIFIED IN WRITING BY A NEW YORK LICENSED PROFESSIONAL ENGINEER AS CLEAN, NON-CONTAMINATED FILL SUITABLE FOR THE INTENDED USE.
- BEFORE THE SITE PLAN IS SIGNED BY THE CHAIRMAN OF THE PLANNING BOARD, THE APPLICANT SHALL BE REQUIRED TO POST A PERFORMANCE BOND OR OTHER TYPE OF ACCEPTABLE MONETARY GUARANTY WHICH SHALL BE IN AN AMOUNT DETERMINED BY THE PLANNING BOARD AND THE VILLAGE ENGINEER AND IN A FORM SATISFACTORY TO THE VILLAGE ATTORNEY.
- THE APPLICANT SHALL NOTIFY THE BUILDING DEPARTMENT OR VILLAGE'S CONSULTING ENGINEER IN WRITING AT LEAST 48 HOURS BEFORE ANY OF THE FOLLOWING SO THAT ANY INSPECTION MAY BE PERFORMED:
  - START OF CONSTRUCTION.
  - INSTALLATION OF SEDIMENT AND EROSION CONTROL MEASURES.
  - COMPLETION OF SITE CLEARING.
  - COMPLETION OF ROUGH GRADING.
  - INSTALLATION OF SMP'S.
  - COMPLETION OF FINAL GRADING AND STABILIZATION OF DISTURBED AREAS.
  - CLOSURE OF CONSTRUCTION.
  - COMPLETION OF FINAL LANDSCAPING; AND
  - SUCCESSFUL ESTABLISHMENT OF LANDSCAPING IN PUBLIC AREAS.
- A STREET OPENING PERMIT SHALL BE OBTAINED FOR ALL WORK WITHIN THE RIGHT-OF-WAY.
- NO STOCKPILE SHALL BE STORED ON-SITE. ALL MATERIALS SHALL BE CARTED OFF-SITE AFTER USE.

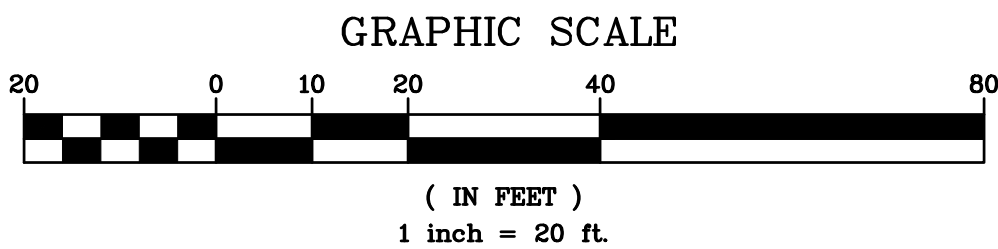
## TEST HOLE DATA:

TEST HOLE #1  
DEPTH - 98"  
0-6" TOPSOIL  
6-36" FINE BROWN SANDY LOAM  
36-98" MIXED SANDS W/ SMALL ROCKS  
NO GROUNDWATER  
NO LEDGE ROCK  
PERC. = 160 INCHES/HOUR  
\*(30 INCHES/HOUR UTILIZED IN DESIGN)

CONTRACTOR SHALL CONTACT DESIGN ENGINEER TO SCHEDULE A SITE INSPECTION PRIOR TO BACKFILLING INFILTRATION/ATTENUATION SYSTEM(S). SHOULD THE CONTRACTOR BACKFILL PRIOR TO INSPECTION, THE CONTRACTOR SHALL EXPOSE THE SYSTEM AT THEIR OWN EXPENSE.

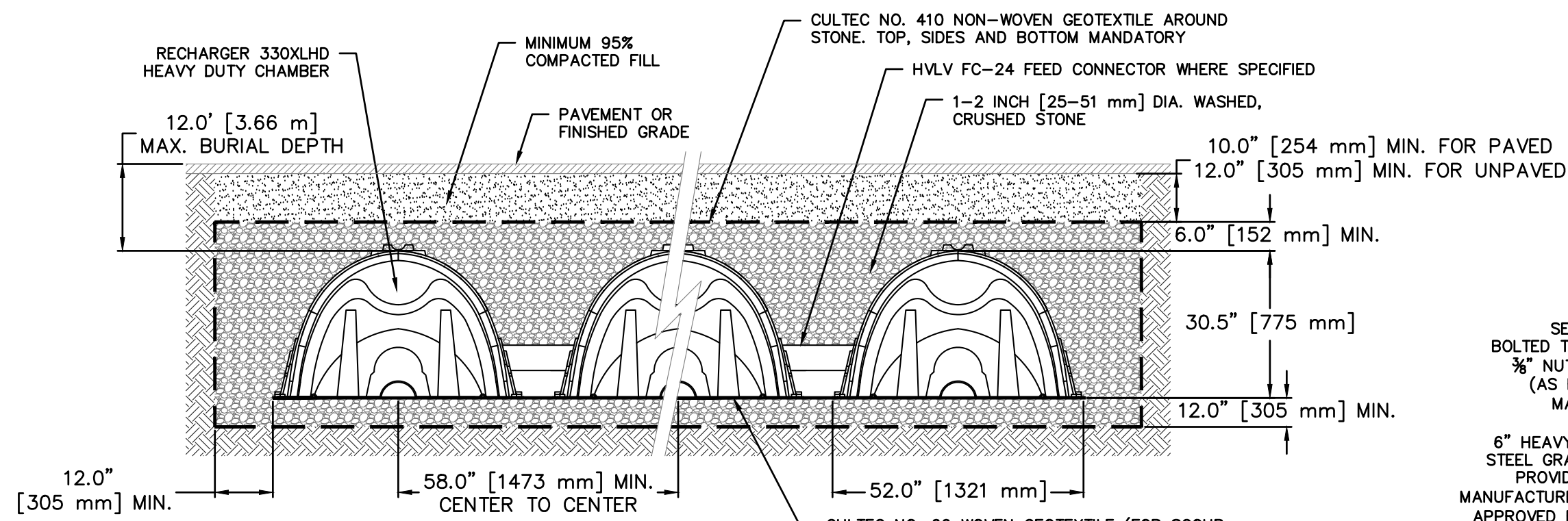
ANY ALTERATIONS OR REVISIONS OF THESE PLANS, UNLESS DONE BY OR UNDER THE DIRECTION OF THE NYS LICENSED AND REGISTERED ENGINEER THAT PREPARED THEM, IS A VIOLATION OF THE NYS EDUCATION LAW.

EXISTING INFORMATION SHOWN HEREON  
PROVIDED BY RICHARD J. DOMATO LAND  
SURVEYOR, DATED JULY 25, 2021.



REVISIONS 1. REVISED PER ENGINEERING COMMENTS 2. REVISED PER ENGINEERING COMMENTS 3. REVISED PER ENGINEERING COMMENTS 4. REVISED PER ENGINEERING COMMENTS 5. REVISED PER ENGINEERING COMMENTS 6. REVISED PER ENGINEERING COMMENTS 7. REVISED PER ENGINEERING COMMENTS 8. REVISED PER ENGINEERING COMMENTS 9. REVISED PER ENGINEERING COMMENTS 10. REVISED PER ENGINEERING COMMENTS 11. REVISED PER ENGINEERING COMMENTS 12. REVISED PER ENGINEERING COMMENTS 13. REVISED PER ENGINEERING COMMENTS 14. REVISED PER ENGINEERING COMMENTS 15. REVISED PER ENGINEERING COMMENTS 16. REVISED PER ENGINEERING COMMENTS 17. REVISED PER ENGINEERING COMMENTS 18. REVISED PER ENGINEERING COMMENTS 19. REVISED PER ENGINEERING COMMENTS 20. REVISED PER ENGINEERING COMMENTS 21. REVISED PER ENGINEERING COMMENTS 22. REVISED PER ENGINEERING COMMENTS 23. REVISED PER ENGINEERING COMMENTS 24. REVISED PER ENGINEERING COMMENTS 25. REVISED PER ENGINEERING COMMENTS 26. REVISED PER ENGINEERING COMMENTS 27. REVISED PER ENGINEERING COMMENTS 28. REVISED PER ENGINEERING COMMENTS 29. REVISED PER ENGINEERING COMMENTS 30. REVISED PER ENGINEERING COMMENTS 31. REVISED PER ENGINEERING COMMENTS 32. REVISED PER ENGINEERING COMMENTS 33. REVISED PER ENGINEERING COMMENTS 34. REVISED PER ENGINEERING COMMENTS 35. REVISED PER ENGINEERING COMMENTS 36. REVISED PER ENGINEERING COMMENTS 37. REVISED PER ENGINEERING COMMENTS 38. REVISED PER ENGINEERING COMMENTS 39. REVISED PER ENGINEERING COMMENTS 40. REVISED PER ENGINEERING COMMENTS 41. REVISED PER ENGINEERING COMMENTS 42. REVISED PER ENGINEERING COMMENTS 43. REVISED PER ENGINEERING COMMENTS 44. REVISED PER ENGINEERING COMMENTS 45. REVISED PER ENGINEERING COMMENTS 46. REVISED PER ENGINEERING COMMENTS 47. REVISED PER ENGINEERING COMMENTS 48. REVISED PER ENGINEERING COMMENTS 49. REVISED PER ENGINEERING COMMENTS 50. REVISED PER ENGINEERING COMMENTS 51. REVISED PER ENGINEERING COMMENTS 52. REVISED PER ENGINEERING COMMENTS 53. REVISED PER ENGINEERING COMMENTS 54. REVISED PER ENGINEERING COMMENTS 55. REVISED PER ENGINEERING COMMENTS 56. REVISED PER ENGINEERING COMMENTS 57. REVISED PER ENGINEERING COMMENTS 58. REVISED PER ENGINEERING COMMENTS 59. REVISED PER ENGINEERING COMMENTS 60. REVISED PER ENGINEERING COMMENTS 61. REVISED PER ENGINEERING COMMENTS 62. REVISED PER ENGINEERING COMMENTS 63. REVISED PER ENGINEERING COMMENTS 64. REVISED PER ENGINEERING COMMENTS 65. REVISED PER ENGINEERING COMMENTS 66. REVISED PER ENGINEERING COMMENTS 67. REVISED PER ENGINEERING COMMENTS 68. REVISED PER ENGINEERING COMMENTS 69. REVISED PER ENGINEERING COMMENTS 70. REVISED PER ENGINEERING COMMENTS 71. REVISED PER ENGINEERING COMMENTS 72. REVISED PER ENGINEERING COMMENTS 73. REVISED PER ENGINEERING COMMENTS 74. REVISED PER ENGINEERING COMMENTS 75. REVISED PER ENGINEERING COMMENTS 76. REVISED PER ENGINEERING COMMENTS 77. REVISED PER ENGINEERING COMMENTS 78. REVISED PER ENGINEERING COMMENTS 79. REVISED PER ENGINEERING COMMENTS 80. REVISED PER ENGINEERING COMMENTS 81. REVISED PER ENGINEERING COMMENTS 82. REVISED PER ENGINEERING COMMENTS 83. REVISED PER ENGINEERING COMMENTS 84. REVISED PER ENGINEERING COMMENTS 85. REVISED PER ENGINEERING COMMENTS 86. REVISED PER ENGINEERING COMMENTS 87. REVISED PER ENGINEERING COMMENTS 88. REVISED PER ENGINEERING COMMENTS 89. REVISED PER ENGINEERING COMMENTS 90. REVISED PER ENGINEERING COMMENTS 91. REVISED PER ENGINEERING COMMENTS 92. REVISED PER ENGINEERING COMMENTS 93. REVISED PER ENGINEERING COMMENTS 94. REVISED PER ENGINEERING COMMENTS 95. REVISED PER ENGINEERING COMMENTS 96. REVISED PER ENGINEERING COMMENTS 97. REVISED PER ENGINEERING COMMENTS 98. REVISED PER ENGINEERING COMMENTS 99. REVISED PER ENGINEERING COMMENTS 100. REVISED PER ENGINEERING COMMENTS 101. REVISED PER ENGINEERING COMMENTS 102. REVISED PER ENGINEERING COMMENTS 103. REVISED PER ENGINEERING COMMENTS 104. REVISED PER ENGINEERING COMMENTS 105. REVISED PER ENGINEERING COMMENTS 106. REVISED PER ENGINEERING COMMENTS 107. REVISED PER ENGINEERING COMMENTS 108. REVISED PER ENGINEERING COMMENTS 109. REVISED PER ENGINEERING COMMENTS 110. REVISED PER ENGINEERING COMMENTS 111. REVISED PER ENGINEERING COMMENTS 112. REVISED PER ENGINEERING COMMENTS 113. REVISED PER ENGINEERING COMMENTS 114. REVISED PER ENGINEERING COMMENTS 115. REVISED PER ENGINEERING COMMENTS 116. REVISED PER ENGINEERING COMMENTS 117. REVISED PER ENGINEERING COMMENTS 118. REVISED PER ENGINEERING COMMENTS 119. REVISED PER ENGINEERING COMMENTS 120. REVISED PER ENGINEERING COMMENTS 121. REVISED PER ENGINEERING COMMENTS 122. REVISED PER ENGINEERING COMMENTS 123. REVISED PER ENGINEERING COMMENTS 124. REVISED PER ENGINEERING COMMENTS 125. REVISED PER ENGINEERING COMMENTS 126. REVISED PER ENGINEERING COMMENTS 127. REVISED PER ENGINEERING COMMENTS 128. REVISED PER ENGINEERING COMMENTS 129. REVISED PER ENGINEERING COMMENTS 130. REVISED PER ENGINEERING COMMENTS 131. REVISED PER ENGINEERING COMMENTS 132. REVISED PER ENGINEERING COMMENTS 133. REVISED PER ENGINEERING COMMENTS 134. REVISED PER ENGINEERING COMMENTS 135. REVISED PER ENGINEERING COMMENTS 136. REVISED PER ENGINEERING COMMENTS 137. REVISED PER ENGINEERING COMMENTS 138. REVISED PER ENGINEERING COMMENTS 139. REVISED PER ENGINEERING COMMENTS 140. REVISED PER ENGINEERING COMMENTS 141. REVISED PER ENGINEERING COMMENTS 142. REVISED PER ENGINEERING COMMENTS 143. REVISED PER ENGINEERING COMMENTS 144. REVISED PER ENGINEERING COMMENTS 145. REVISED PER ENGINEERING COMMENTS 146. REVISED PER ENGINEERING COMMENTS 147. REVISED PER ENGINEERING COMMENTS 148. REVISED PER ENGINEERING COMMENTS 149. REVISED PER ENGINEERING COMMENTS 150. REVISED PER ENGINEERING COMMENTS 151. REVISED PER ENGINEERING COMMENTS 152. REVISED PER ENGINEERING COMMENTS 153. REVISED PER ENGINEERING COMMENTS 154. REVISED PER ENGINEERING COMMENTS 155. REVISED PER ENGINEERING COMMENTS 156. REVISED PER ENGINEERING COMMENTS 157. REVISED PER ENGINEERING COMMENTS 158. REVISED PER ENGINEERING COMMENTS 159. REVISED PER ENGINEERING COMMENTS 160. REVISED PER ENGINEERING COMMENTS 161. REVISED PER ENGINEERING COMMENTS 162. REVISED PER ENGINEERING COMMENTS 163. REVISED PER ENGINEERING COMMENTS 164. REVISED PER ENGINEERING COMMENTS 165. REVISED PER ENGINEERING COMMENTS 166. REVISED PER ENGINEERING COMMENTS 167. REVISED PER ENGINEERING COMMENTS 168. REVISED PER ENGINEERING COMMENTS 169. REVISED PER ENGINEERING COMMENTS 170. REVISED PER ENGINEERING COMMENTS 171. REVISED PER ENGINEERING COMMENTS 172. REVISED PER ENGINEERING COMMENTS 173. REVISED PER ENGINEERING COMMENTS 174. REVISED PER ENGINEERING COMMENTS 175. REVISED PER ENGINEERING COMMENTS 176. REVISED PER ENGINEERING COMMENTS 177. REVISED PER ENGINEERING COMMENTS 178. REVISED PER ENGINEERING COMMENTS 179. REVISED PER ENGINEERING COMMENTS 180. REVISED PER ENGINEERING COMMENTS 181. REVISED PER ENGINEERING COMMENTS 182. REVISED PER ENGINEERING COMMENTS 183. REVISED PER ENGINEERING COMMENTS 184. REVISED PER ENGINEERING COMMENTS 185. REVISED PER ENGINEERING COMMENTS 186. REVISED PER ENGINEERING COMMENTS 187. REVISED PER ENGINEERING COMMENTS 188. REVISED PER ENGINEERING COMMENTS 189. REVISED PER ENGINEERING COMMENTS 190. REVISED PER ENGINEERING COMMENTS 191. REVISED PER ENGINEERING COMMENTS 192. REVISED PER ENGINEERING COMMENTS 193. REVISED PER ENGINEERING COMMENTS 194. REVISED PER ENGINEERING COMMENTS 195. REVISED PER ENGINEERING COMMENTS 196. REVISED PER ENGINEERING COMMENTS 197. REVISED PER ENGINEERING COMMENTS 198. REVISED PER ENGINEERING COMMENTS 199. REVISED PER ENGINEERING COMMENTS 200. REVISED PER ENGINEERING COMMENTS 201. REVISED PER ENGINEERING COMMENTS 202. REVISED PER ENGINEERING COMMENTS 203. REVISED PER ENGINEERING COMMENTS 204. REVISED PER ENGINEERING COMMENTS 205. REVISED PER ENGINEERING COMMENTS 206. REVISED PER ENGINEERING COMMENTS 207. REVISED PER ENGINEERING COMMENTS 208. REVISED PER ENGINEERING COMMENTS 209. REVISED PER ENGINEERING COMMENTS 210. REVISED PER ENGINEERING COMMENTS 211. REVISED PER ENGINEERING COMMENTS 212. REVISED PER ENGINEERING COMMENTS 213. REVISED PER ENGINEERING COMMENTS 214. REVISED PER ENGINEERING COMMENTS 215. REVISED PER ENGINEERING COMMENTS 216. REVISED PER ENGINEERING COMMENTS 217. REVISED PER ENGINEERING COMMENTS 218. REVISED PER ENGINEERING COMMENTS 219. REVISED PER ENGINEERING COMMENTS 220. REVISED PER ENGINEERING COMMENTS 221. REVISED PER ENGINEERING COMMENTS 222. REVISED PER ENGINEERING COMMENTS 223. REVISED PER ENGINEERING COMMENTS 224. REVISED PER ENGINEERING COMMENTS 225. REVISED PER ENGINEERING COMMENTS 226. REVISED PER ENGINEERING COMMENTS 227. REVISED PER ENGINEERING COMMENTS 228. REVISED PER ENGINEERING COMMENTS 229. REVISED PER ENGINEERING COMMENTS 230. REVISED PER ENGINEERING COMMENTS 231. REVISED PER ENGINEERING COMMENTS 232. REVISED PER ENGINEERING COMMENTS 233. REVISED PER ENGINEERING COMMENTS 234. REVISED PER ENGINEERING COMMENTS 235. REVISED PER ENGINEERING COMMENTS 236. REVISED PER ENGINEERING COMMENTS 237. REVISED PER ENGINEERING COMMENTS 238. REVISED PER ENGINEERING COMMENTS 239. REVISED PER ENGINEERING COMMENTS 240. REVISED PER ENGINEERING COMMENTS 241. REVISED PER ENGINEERING COMMENTS 242. REVISED PER ENGINEERING COMMENTS 243. REVISED PER ENGINEERING COMMENTS 244. REVISED PER ENGINEERING COMMENTS 245. REVISED PER ENGINEERING COMMENTS 246. REVISED PER ENGINEERING COMMENTS 247. REVISED PER ENGINEERING COMMENTS 248. REVISED PER ENGINEERING COMMENTS 249. REVISED PER ENGINEERING COMMENTS 250. REVISED PER ENGINEERING COMMENTS 251. REVISED PER ENGINEERING COMMENTS 252. REVISED PER ENGINEERING COMMENTS 253. REVISED PER ENGINEERING COMMENTS 254. REVISED PER ENGINEERING COMMENTS 255. REVISED PER ENGINEERING COMMENTS 256. REVISED PER ENGINEERING COMMENTS 257. REVISED PER ENGINEERING COMMENTS 258. REVISED PER ENGINEERING COMMENTS 259. REVISED PER ENGINEERING COMMENTS 260. REVISED PER ENGINEERING COMMENTS 261. REVISED PER ENGINEERING COMMENTS 262. REVISED PER ENGINEERING COMMENTS 263. REVISED PER ENGINEERING COMMENTS 264. REVISED PER ENGINEERING COMMENTS 265. REVISED PER ENGINEERING COMMENTS 266. REVISED PER ENGINEERING COMMENTS 267. REVISED PER ENGINEERING COMMENTS 268. REVISED PER ENGINEERING COMMENTS 269. REVISED PER ENGINEERING COMMENTS 270. REVISED PER ENGINEERING COMMENTS 271. REVISED PER ENGINEERING COMMENTS 272. REVISED PER ENGINEERING COMMENTS 273. REVISED PER ENGINEERING COMMENTS 274. REVISED PER ENGINEERING COMMENTS 275. REVISED PER ENGINEERING COMMENTS 276. REVISED PER ENGINEERING COMMENTS 277. REVISED PER ENGINEERING COMMENTS 278. REVISED PER ENGINEERING COMMENTS 279. REVISED PER ENGINEERING COMMENTS 280. REVISED PER ENGINEERING COMMENTS 281. REVISED PER ENGINEERING COMMENTS 282. REVISED PER ENGINEERING COMMENTS 283. REVISED PER ENGINEERING COMMENTS 284. REVISED PER ENGINEERING COMMENTS 285. REVISED PER ENGINEERING COMMENTS 286. REVISED PER ENGINEERING COMMENTS 287. REVISED PER ENGINEERING COMMENTS 288. REVISED PER ENGINEERING COMMENTS 289. REVISED PER ENGINEERING COMMENTS 290. REVISED PER ENGINEERING COMMENTS 291. REVISED PER ENGINEERING COMMENTS 292. REVISED PER ENGINEERING COMMENTS 293. REVISED PER ENGINEERING COMMENTS 294. REVISED PER ENGINEERING COMMENTS 295. REVISED PER ENGINEERING COMMENTS 296. REVISED PER ENGINEERING COMMENTS 297. REVISED PER ENGINEERING COMMENTS 298. REVISED PER ENGINEERING COMMENTS 299. REVISED PER ENGINEERING COMMENTS 300. REVISED PER ENGINEERING COMMENTS 301. REVISED PER ENGINEERING COMMENTS 302. REVISED PER ENGINEERING COMMENTS 303. REVISED PER ENGINEERING COMMENTS 304. REVISED PER ENGINEERING COMMENTS 305. REVISED PER ENGINEERING COMMENTS 306. REVISED PER ENGINEERING COMMENTS 307. REVISED PER ENGINEERING COMMENTS 308. REVISED PER ENGINEERING COMMENTS 309. REVISED PER ENGINEERING COMMENTS 310. REVISED PER ENGINEERING COMMENTS 311. REVISED PER ENGINEERING COMMENTS 312. REVISED PER ENGINEERING COMMENTS 313. REVISED PER ENGINEERING COMMENTS 314. REVISED PER ENGINEERING COMMENTS 315. REVISED PER ENGINEERING COMMENTS 316. REVISED PER ENGINEERING COMMENTS 317. REVISED PER ENGINEERING COMMENTS 318. REVISED PER ENGINEERING COMMENTS 319. REVISED PER ENGINEERING COMMENTS 320. REVISED PER ENGINEERING COMMENTS 321. REVISED PER ENGINEERING COMMENTS 322. REVISED PER ENGINEERING COMMENTS 323. REVISED PER ENGINEERING COMMENTS 324. REVISED PER ENGINEERING COMMENTS 325. REVISED PER ENGINEERING COMMENTS 326. REVISED PER ENGINEERING COMMENTS 327. REVISED PER ENGINEERING COMMENTS 328. REVISED PER ENGINEERING COMMENTS 329. REVISED PER ENGINEERING COMMENTS 330. REVISED PER ENGINEERING COMMENTS 331. REVISED PER ENGINEERING COMMENTS 332. REVISED PER ENGINEERING COMMENTS 333. REVISED PER ENGINEERING COMMENTS 334. REVISED PER ENGINEERING COMMENTS 335. REVISED PER ENGINEERING COMMENTS 336. REVISED PER ENGINEERING COMMENTS 337. REVISED PER ENGINEERING COMMENTS 338. REVISED PER ENGINEERING COMMENTS 339. REVISED PER ENGINEERING COMMENTS 340. REVISED PER ENGINEERING COMMENTS 341. REVISED PER ENGINEERING COMMENTS 342. REVISED PER ENGINEERING COMMENTS 343. REVISED PER ENGINEERING COMMENTS 344. REVISED PER ENGINEERING COMMENTS 345. REVISED PER ENGINEERING COMMENTS 346. REVISED PER ENGINEERING COMMENTS 347. REVISED PER ENGINEERING COMMENTS 348. REVISED PER ENGINEERING COMMENTS 349. REVISED PER ENGINEERING COMMENTS 350. REVISED PER ENGINEERING COMMENTS 351. REVISED PER ENGINEERING COMMENTS 352. REVISED PER ENGINEERING COMMENTS 353. REVISED PER ENGINEERING COMMENTS 354. REVISED PER ENGINEERING COMMENTS 355. REVISED PER ENGINEERING COMMENTS 356. REVISED PER ENGINEERING COMMENTS 357. REVISED PER ENGINEERING COMMENTS 358. REVISED PER ENGINEERING COMMENTS 359. REVISED PER ENGINEERING COMMENTS 360. REVISED PER ENGINEERING COMMENTS 361. REVISED PER ENGINEERING COMMENTS 362. REVISED PER ENGINEERING COMMENTS 363. REVISED PER ENGINEERING COMMENTS 364. REVISED PER ENGINEERING COMMENTS 365. REVISED PER ENGINEERING COMMENTS 366. REVISED PER ENGINEERING COMMENTS 367. REVISED PER ENGINEERING COMMENTS 368. REVISED PER ENGINEERING COMMENTS 369. REVISED PER ENGINEERING COMMENTS 370. REVISED PER ENGINEERING COMMENTS 371. REVISED PER ENGINEERING COMMENTS 372. REVISED PER ENGINEERING COMMENTS 373. REVISED PER ENGINEERING COMMENTS 374. REVISED PER ENGINEERING COMMENTS 375. REVISED PER ENGINEERING COMMENTS 376. REVISED PER ENGINEERING COMMENTS 377. REVISED PER ENGINEERING COMMENTS 378. REVISED PER ENGINEERING COMMENTS 379. REVISED PER ENGINEERING COMMENTS 380. REVISED PER ENGINEERING COMMENTS 381. REVISED PER ENGINEERING COMMENTS 382. REVISED PER ENGINEERING COMMENTS 383. REVISED PER ENGINEERING COMMENTS 384. REVISED PER ENGINEERING COMMENTS 385. REVISED PER ENGINEERING COMMENTS 386. REVISED PER ENGINEERING COMMENTS 387. REVISED PER ENGINEERING COMMENTS 388. REVISED PER ENGINEERING COMMENTS 389. REVISED PER ENGINEERING COMMENTS 390. REVISED PER ENGINEERING COMMENTS 391. REVISED PER ENGINEERING COMMENTS 392. REVISED PER ENGINEERING COMMENTS 393. REVISED PER ENGINEERING COMMENTS 394. REVISED PER ENGINEERING COMMENTS 395. REVISED PER ENGINEERING COMMENTS 396. REVISED PER ENGINEERING COMMENTS 397. REVISED PER ENGINEERING COMMENTS 398. REVISED PER ENGINEERING COMMENTS 399. REVISED PER ENGINEERING COMMENTS 400. REVISED PER ENGINEERING COMMENTS 401. REVISED PER ENGINEERING COMMENTS 402. REVISED PER ENGINEERING COMMENTS 403. REVISED PER ENGINEERING COMMENTS 404. REVISED PER ENGINEERING COMMENTS 405. REVISED PER ENGINEERING COMMENTS 406. REVISED PER ENGINEERING COMMENTS 407. REVISED PER ENGINEERING COMMENTS 408. REVISED PER ENGINEERING COMMENTS 409. REVISED PER ENGINEERING COMMENTS 410. REVISED PER ENGINEERING COMMENTS 411. REVISED PER ENGINEERING COMMENTS 412. REVISED PER ENGINEERING COMMENTS 413. REVISED PER ENGINEERING COMMENTS 414. REVISED PER ENGINEERING COMMENTS 415. REVISED PER ENGINEERING COMMENTS 416. REVISED PER ENGINEERING COMMENTS 417. REVISED PER ENGINEERING COMMENTS 418. REVISED PER ENGINEERING COMMENTS 419. REVISED PER ENGINEERING COMMENTS 420. REVISED PER ENGINEERING COMMENTS 421. REVISED PER ENGINEERING COMMENTS 422. REVISED PER ENGINEERING COMMENTS 423. REVISED PER ENGINEERING COMMENTS 424. REVISED PER ENGINEERING COMMENTS 425. REVISED PER ENGINEERING COMMENTS 426. REVISED PER ENGINEERING COMMENTS 427. REVISED PER ENGINEERING COMMENTS 428. REVISED PER ENGINEERING COMMENTS 429. REVISED PER ENGINEERING COMMENTS 430. REVISED PER ENGINEERING COMMENTS 431. REVISED PER ENGINEERING COMMENTS 432. REVISED PER ENGINEERING COMMENTS 433. REVISED PER ENGINEERING COMMENTS 434. REVISED PER ENGINEERING COMMENTS 435. REVISED PER ENGINEERING COMMENTS 436. REVISED PER ENGINEERING COMMENTS 437. REVISED PER ENGINEERING COMMENTS 438. REVISED PER ENGINEERING COMMENTS 439. REVISED PER ENGINEERING COMMENTS 440. REVISED PER ENGINEERING COMMENTS 441. REVISED PER ENGINEERING COMMENTS 442. REVISED PER ENGINEERING COMMENTS 443. REVISED PER ENGINEERING COMMENTS 444. REVISED PER ENGINEERING COMMENTS 445. REVISED PER ENGINEERING COMMENTS 446. REVISED PER ENGINEERING COMMENTS 447. REVISED PER ENGINEERING COMMENTS 448. REVISED PER ENGINEERING COMMENTS 449. REVISED PER ENGINEERING COMMENTS 450. REVISED PER ENGINEERING COMMENTS 451. REVISED PER ENGINEERING COMMENTS 452. REVISED PER ENGINEERING COMMENTS 453. REVISED PER ENGINEERING COMMENTS 454. REVISED PER ENGINEERING COMMENTS 455. REVISED PER ENGINEERING COMMENTS 456. REVISED PER ENGINEERING COMMENTS 457. REVISED PER ENGINEERING COMMENTS 458. REVISED PER ENGINEERING COMMENTS 459. REVISED PER ENGINEERING COMMENTS 460. REVISED PER ENGINEERING COMMENTS 461. REVISED PER ENGINEERING COMMENTS 462. REVISED PER ENGINEERING COMMENTS 463. REVISED PER ENGINEERING COMMENTS 464. REVISED PER ENGINEERING COMMENTS 465. REVISED PER ENGINEERING COMMENTS 466. REVISED PER ENGINEERING COMMENTS 467. REVISED PER ENGINEERING COMMENTS 468. REVISED PER ENGINEERING COMMENTS 469. REVISED PER ENGINEERING COMMENTS 470. REVISED PER ENGINEERING COMMENTS 471. REVISED PER ENGINEERING COMMENTS 472. REVISED PER ENGINEERING COMMENTS 473. REVISED PER ENGINEERING COMMENTS 474. REVISED PER ENGINEERING COMMENTS 475. REVISED PER ENGINEERING COMMENTS 476. REVISED PER ENGINEERING COMMENTS 477. REVISED PER ENGINEERING COMMENTS 478. REVISED PER ENGINEERING COMMENTS 479. REVISED PER ENGINEERING COMMENTS 480. REVISED PER ENGINEERING COMMENTS 481. REVISED PER ENGINEERING COMMENTS 482. REVISED PER ENGINEERING COMMENTS 483. REVISED PER ENGINEERING COMMENTS 484. REVISED PER ENGINEERING COMMENTS 485. REVISED PER ENGINEERING COMMENTS 486. REVISED PER ENGINEERING COMMENTS 487. REVISED PER ENGINEERING COMMENTS 488. REVISED PER ENGINEERING COMMENTS 489. REVISED PER ENGINEERING COMMENTS 490. REVISED PER ENGINEERING COMMENTS 491. REVISED PER ENGINEERING COMMENTS 492. REVISED PER ENGINEERING COMMENTS 493. REVISED PER ENGINEERING COMMENTS 494. REVISED PER ENGINEERING COMMENTS 495. REVISED PER ENGINEERING COMMENTS 496. REVISED PER ENGINEERING COMMENTS 497. REVISED PER ENGINEERING COMMENTS 498. REVISED PER ENGINEERING COMMENTS 499. REVISED PER ENGINEERING COMMENTS 500. REVISED PER ENGINEERING COMMENTS 501. REVISED PER ENGINEERING COMMENTS 502. REVISED PER ENGINEERING COMMENTS 503. REVISED PER ENGINEERING COMMENTS 504. REVISED PER ENGINEERING COMMENTS 505. REVISED PER ENGINEERING COMMENTS 506. REVISED PER ENGINEERING COMMENTS 507. REVISED PER ENGINEERING COMMENTS 508. REVISED PER ENGINEERING COMMENTS 509. REVISED PER ENGINEERING COMMENTS 510. REVISED PER ENGINEERING COMMENTS 511. REVISED PER ENGINEERING COMMENTS 512. REVISED PER ENGINEERING COMMENTS 513. REVISED PER ENGINEERING COMMENTS 514. REVISED PER ENGINEERING COMMENTS 515. REVISED PER ENGINEERING COMMENTS 516. REVISED PER ENGINEERING COMMENTS 517. REVISED PER ENGINEERING COMMENTS 518. REVISED PER ENGINEERING COMMENTS 519. REVISED PER ENGINEERING COMMENTS 520. REVISED PER ENGINEERING COMMENTS 521. REVISED PER ENGINEERING COMMENTS 522. REVISED PER ENGINEERING COMMENTS 523. REVISED PER ENGINEERING COMMENTS 524. REVISED PER ENGINEERING COMMENTS 525. REVISED PER ENGINEERING COMMENTS 526. REVISED PER ENGINEERING COMMENTS 527. REVISED PER ENGINEERING COMMENTS 528. REVISED PER ENGINEERING COMMENTS 529. REVISED PER ENGINEERING COMMENTS 530. REVISED PER ENGINEERING COMMENTS 531. REVISED PER ENGINEERING COMMENTS 532. REVISED PER ENGINEERING COMMENTS 533. REVISED PER ENGINEERING COMMENTS 534. REVISED PER ENGINEERING COMMENTS 535. REVISED PER ENGINEERING COMMENTS 536. REVISED PER ENGINEERING COMMENTS 537. REVISED PER ENGINEERING COMMENTS 538. REVISED PER ENGINEERING COMMENTS 539. REVISED PER ENGINEERING COMMENTS 540. REVISED PER ENGINEERING COMMENTS 541. REVISED PER ENGINEERING COMMENTS 542. REVISED PER ENGINEERING COMMENTS 543. REVISED PER ENGINEERING COMMENTS 544. REVISED PER ENGINEERING COMMENTS 545. REVISED PER ENGINEERING COMMENTS 546. REVISED PER ENGINEERING COMMENTS 547. REVISED PER ENGINEERING COMMENTS 548. REVISED PER ENGINEERING COMMENTS 549. REVISED PER ENGINEERING COMMENTS 550. REVISED PER ENGINEERING COMMENTS 551. REVISED PER ENGINEERING COMMENTS 552. REVISED PER ENGINEERING COMMENTS 553. REVISED PER ENGINEERING COMMENTS 554. REVISED PER ENGINEERING COMMENTS 555. REVISED PER ENGINEERING COMMENTS 556. REVISED PER ENGINEERING COMMENTS 557. REVISED PER ENGINEERING COMMENTS 558. REVISED PER ENGINEERING COMMENTS 559. REVISED PER ENGINEERING COMMENTS 560. REVISED PER ENGINEERING COMMENTS 561. REVISED PER ENGINEERING COMMENTS 562. REVISED PER ENGINEERING COMMENTS 563. REVISED PER ENGINEERING COMMENTS 564. REVISED PER ENGINEERING COMMENTS 565. REVISED PER ENGINEERING COMMENTS 566. REVISED PER ENGINEERING COMMENTS 567. REVISED PER ENGINEERING COMMENTS 568. REVISED PER ENGINEERING COMMENTS 569. REVISED PER ENGINEERING COMMENTS 570. REVISED PER ENGINEERING COMMENTS 571. REVISED PER ENGINEERING COMMENTS 572. REVISED PER ENGINEERING COMMENTS 573. REVISED PER ENGINEERING COMMENTS 574. REVISED PER ENGINEERING COMMENTS 575. REVISED PER ENGINEERING COMMENTS 576. REVISED PER ENGINEERING COMMENTS 577. REVISED PER ENGINEERING COMMENTS 578. REVISED PER ENGINEERING COMMENTS 579. REVISED PER ENGINEERING COMMENTS 580. REVISED PER ENGINEERING COMMENTS 581. REVISED PER ENGINEERING COMMENTS 582. REVISED PER ENGINEERING COMMENTS 583. REVISED PER ENGINEERING COMMENTS 584. REVISED PER ENGINEERING COMMENTS 585. REVISED PER ENGINEERING COMMENTS 586. REVISED PER ENGINEERING COMMENTS 587. REVISED PER ENGINEERING COMMENTS 588. REVISED PER ENGINEERING COMMENTS 589. REVISED PER ENGINEERING COMMENTS 590. REVISED PER ENGINEERING COMMENTS 591. REVISED PER ENGINEERING COMMENTS 592. REVISED PER ENGINEERING COMMENTS 593. REVISED PER ENGINEERING COMMENTS 594. REVISED PER ENGINEERING COMMENTS 595. REVISED PER ENGINEERING COMMENTS 596. REVISED PER ENGINEERING COMMENTS 597. REVISED PER ENGINEERING COMMENTS 598. REVISED PER ENGINEERING COMMENTS 599. REVISED PER ENGINEERING COMMENTS 600. REVISED PER ENGINEERING COMMENTS 601. REVISED PER ENGINEERING COMMENTS 602. REVISED PER ENGINEERING COMMENTS 603. REVISED PER ENGINEERING COMMENTS 604. REVISED PER ENGINEERING COMMENTS 605. REVISED PER ENGINEERING COMMENTS 606. REVISED PER ENGINEERING COMMENTS 607. REVISED PER ENGINEERING COMMENTS 608. REVISED PER ENGINEERING COMMENTS 609. REVISED PER
---



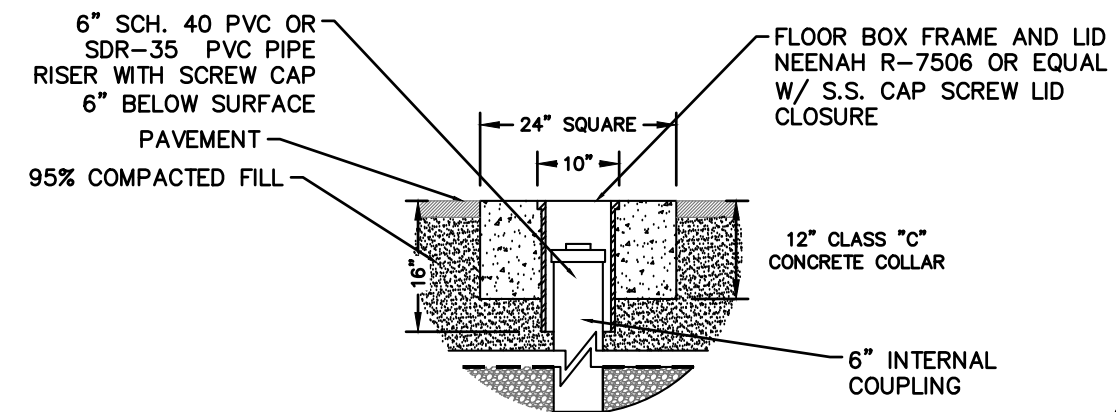


#### GENERAL NOTES

RECHARGER 330XL HD BY CULTEC, INC. OF BROOKFIELD, CT. STORAGE PROVIDED = 11.32 CF/FT [1.05 m<sup>3</sup>/m] PER DESIGN UNIT.  
REFER TO CULTEC, INC.'S CURRENT RECOMMENDED INSTALLATION GUIDELINES.  
THE CHAMBER WILL BE DESIGNED TO WITHSTAND TRAFFIC LOADS WHEN INSTALLED ACCORDING TO CULTEC'S RECOMMENDED INSTALLATION INSTRUCTIONS

ALL RECHARGER 330XL HD HEAVY DUTY UNITS ARE MARKED WITH A COLOR STRIPE FORMED INTO THE PART ALONG THE LENGTH OF THE CHAMBER.  
ALL RECHARGER 330XL HD CHAMBERS MUST BE INSTALLED IN ACCORDANCE WITH ALL APPLICABLE LOCAL, STATE AND FEDERAL REGULATIONS

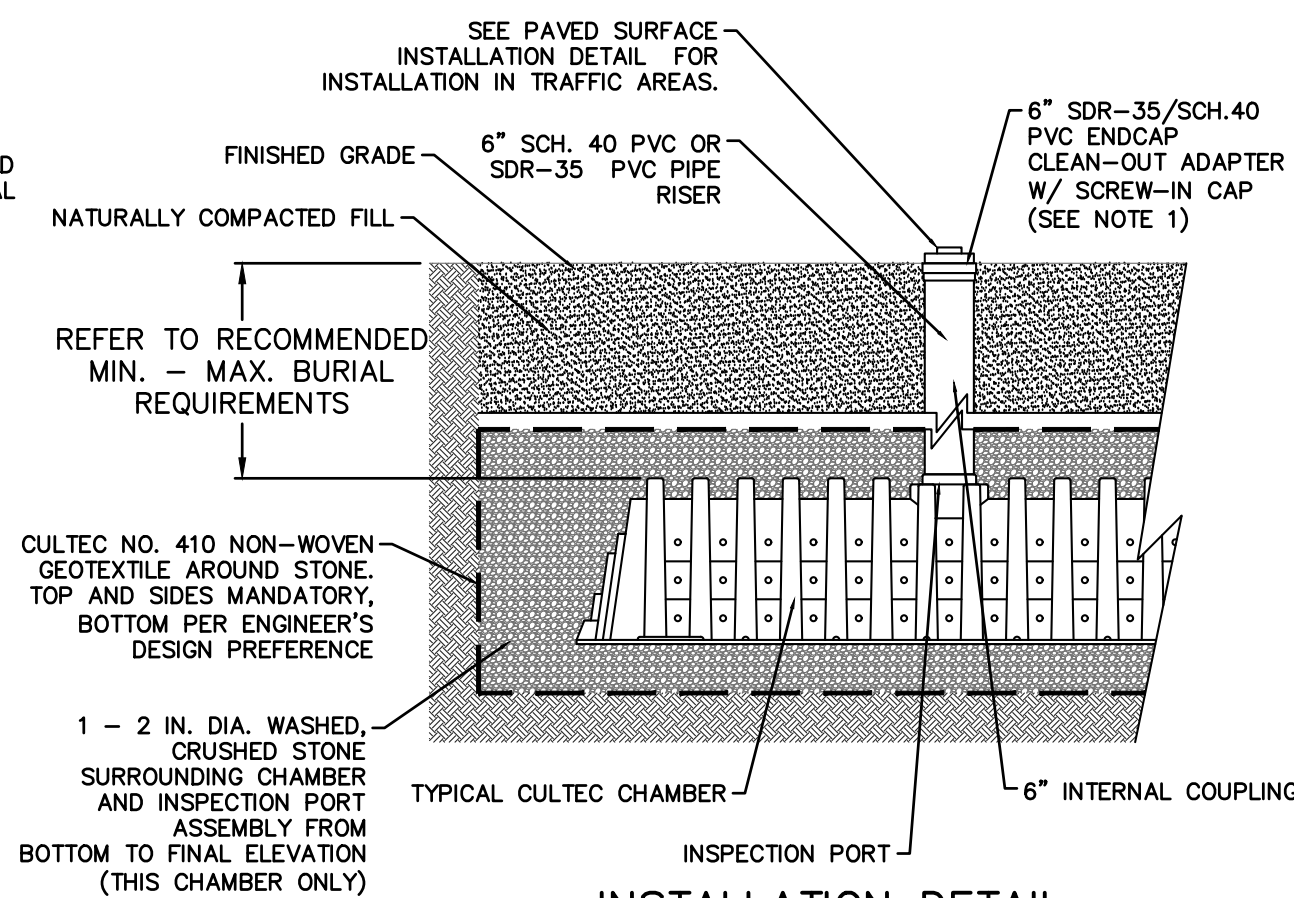
#### CULTEC RECHARGER 330XLHD TRAFFIC



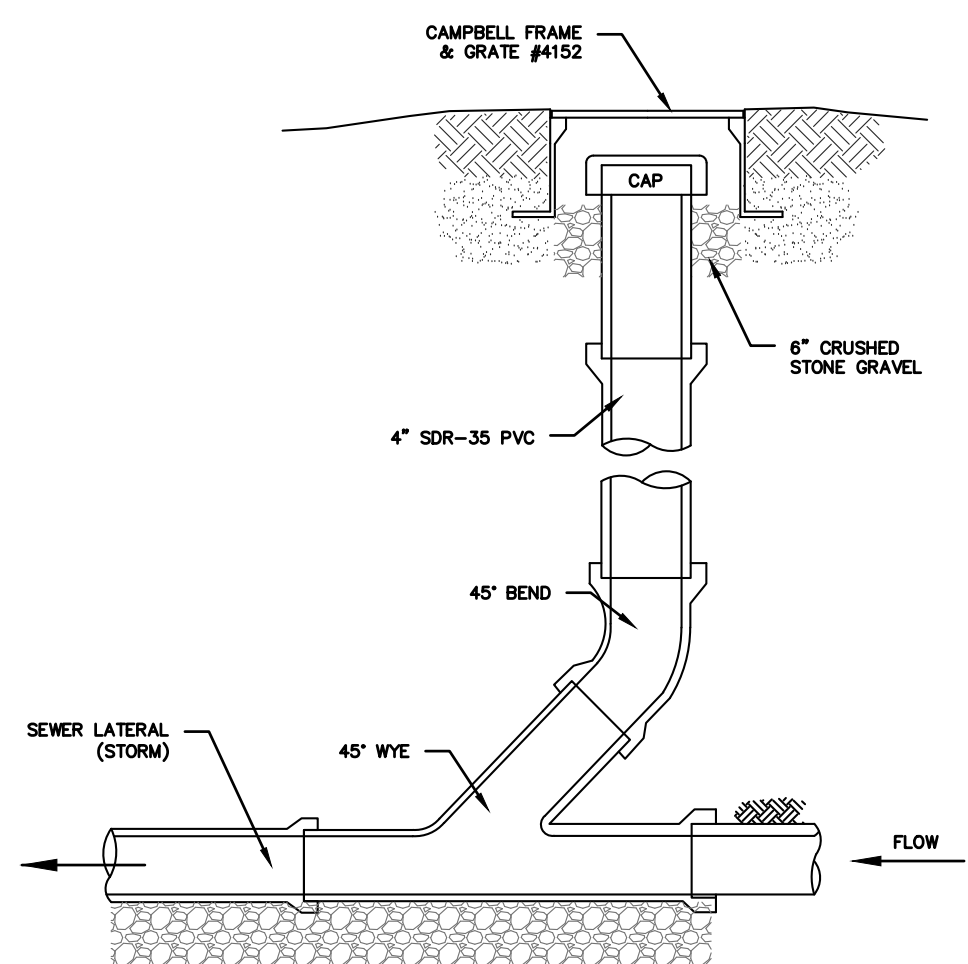
#### PAVED SURFACE INSTALLATION DETAIL

#### NOTES:

- WHEN ACCESS PORT IS UTILIZED AS SYSTEM OVERFLOW, INSTALL NDS MODEL 50 GRATE. GRATE TO BE SET 1/2" ABOVE ADJACENT GRADE. ADJACENT GRADE TO PITCH AWAY FROM ACCESS PORT IN ALL DIRECTION.
- INSPECTION PORT NOT TO SERVE AS OVERFLOW WHEN INSTALLED IN PAVED/TRAFFIC AREAS.



#### CULTEC INSPECTION PORT

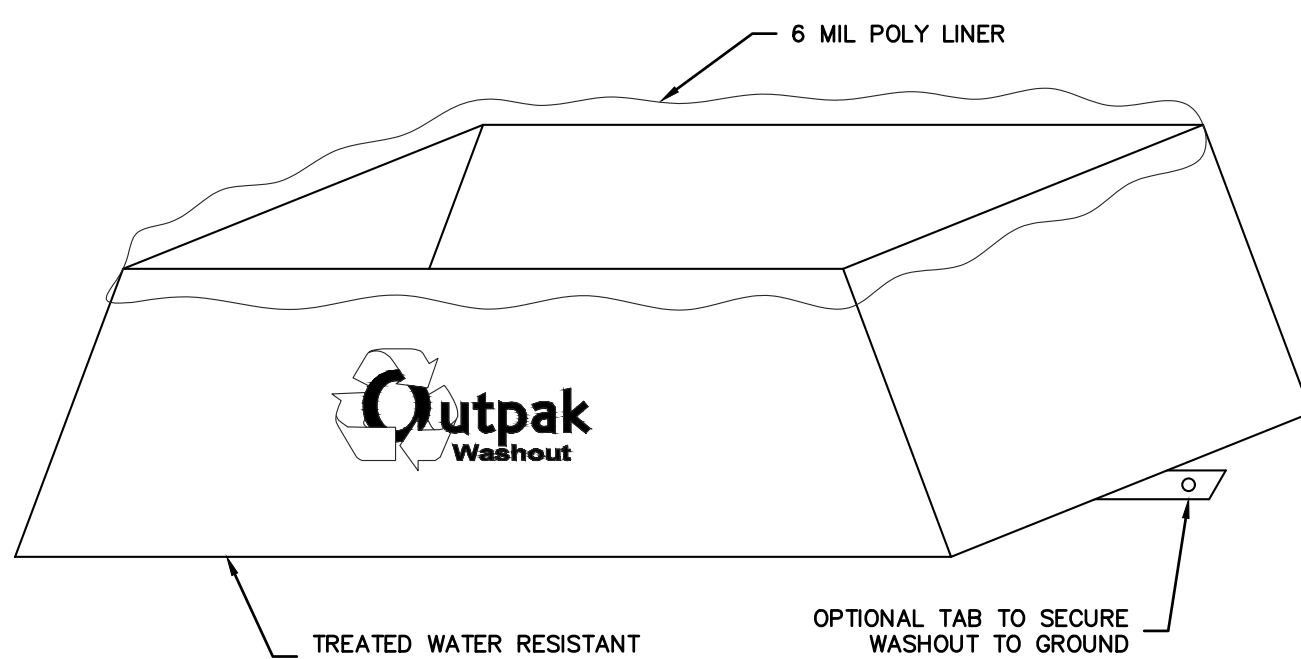


#### NOTES (STORM SEWER):

- REFER TO PLAN FOR SPECIFIC PIPE SIZING AND SLOPE SPECIFICATIONS; HOWEVER, IN GENERAL, ALL STORM SEWER SERVICES TO BE 6" SCH. 40 @ 1.0% MINIMUM.
- CLEANOUTS SHALL BE PLACED BEFORE SIGNIFICANT PIPE BEND LOCATIONS (I.E., JUNCTIONS, 90-DEGREE BENDS, ETC.) UNLESS A ROOF LEADER DOWNSPOUT CONNECTION IS PROPOSED.

#### SEWER CLEANOUT DETAIL (GRAVITY)

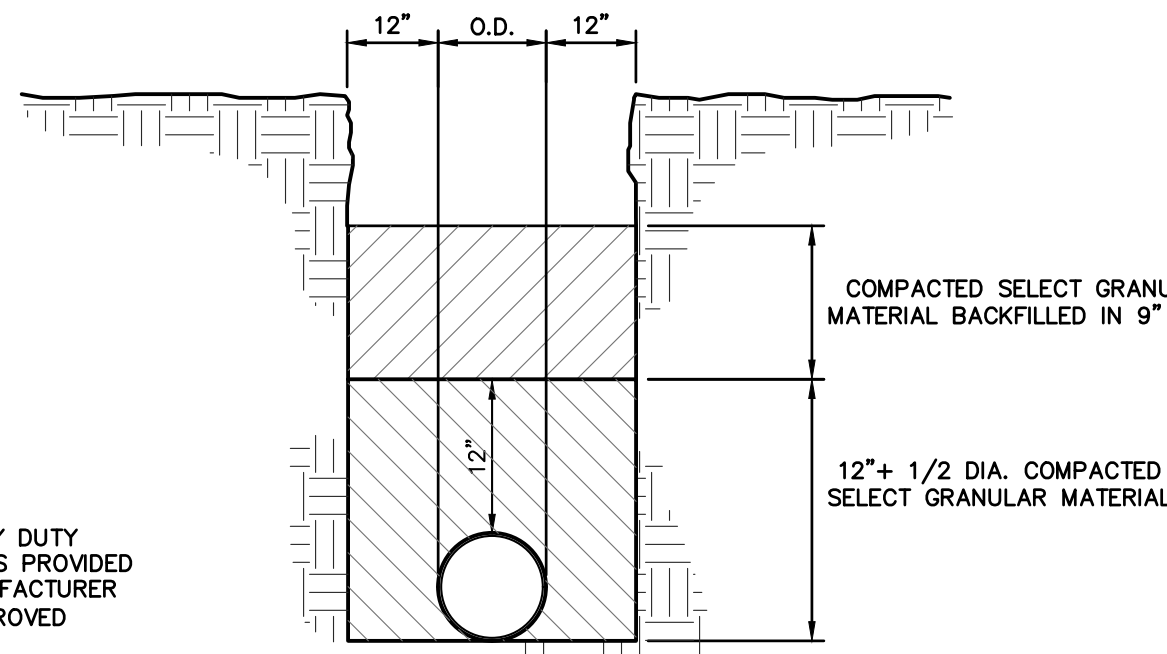
(STORM)



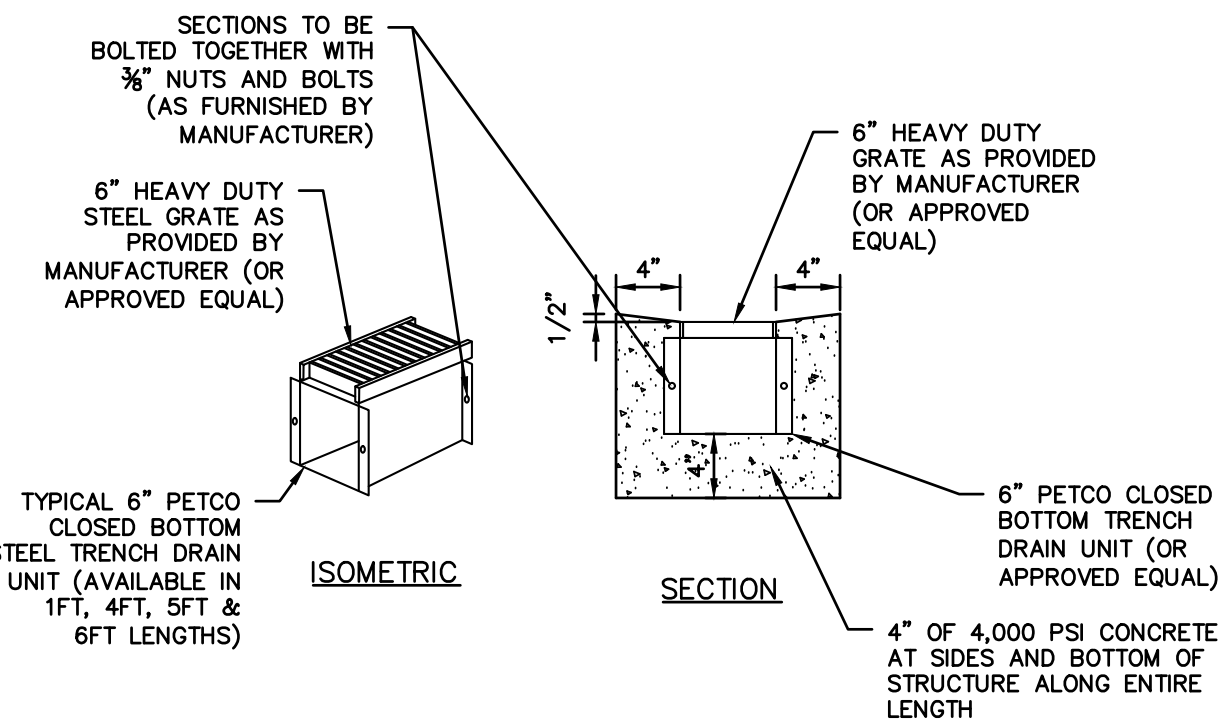
#### NOTES:

- THE WASHOUT SHALL BE INSTALLED PRIOR TO USING MATERIALS THAT REQUIRE WASHOUT ON THIS PROJECT.
- AS NECESSARY, SIGNS SHALL BE PLACED THROUGHOUT THE SITE TO INDICATE THE LOCATION OF THE WASHOUT.
- THE WASHOUT AREA WILL BE REPLACED AS NECESSARY TO MAINTAIN CAPACITY FOR LIQUID WASTE.
- WASHOUT RESIDUE SHALL BE REMOVED FROM THE SITE AND DISPOSED OF AT AN APPROVED WASTE FACILITY.
- DO NOT WASHOUT INTO STORM DRAINS, OPEN DITCHES, STREETS, OR STREAMS.
- AVOID DUMPING EXCESS CONCRETE IN NON-DESIGNATED DUMPING AREAS.
- LOCATE WASHOUT AT LEAST 50' (15 METERS) FROM STORM DRAIN, OPEN DITCHES, OR WATER BODIES.
- THE WASHOUT SHALL BE USED ONLY FOR NON-HAZARDOUS WASTES.

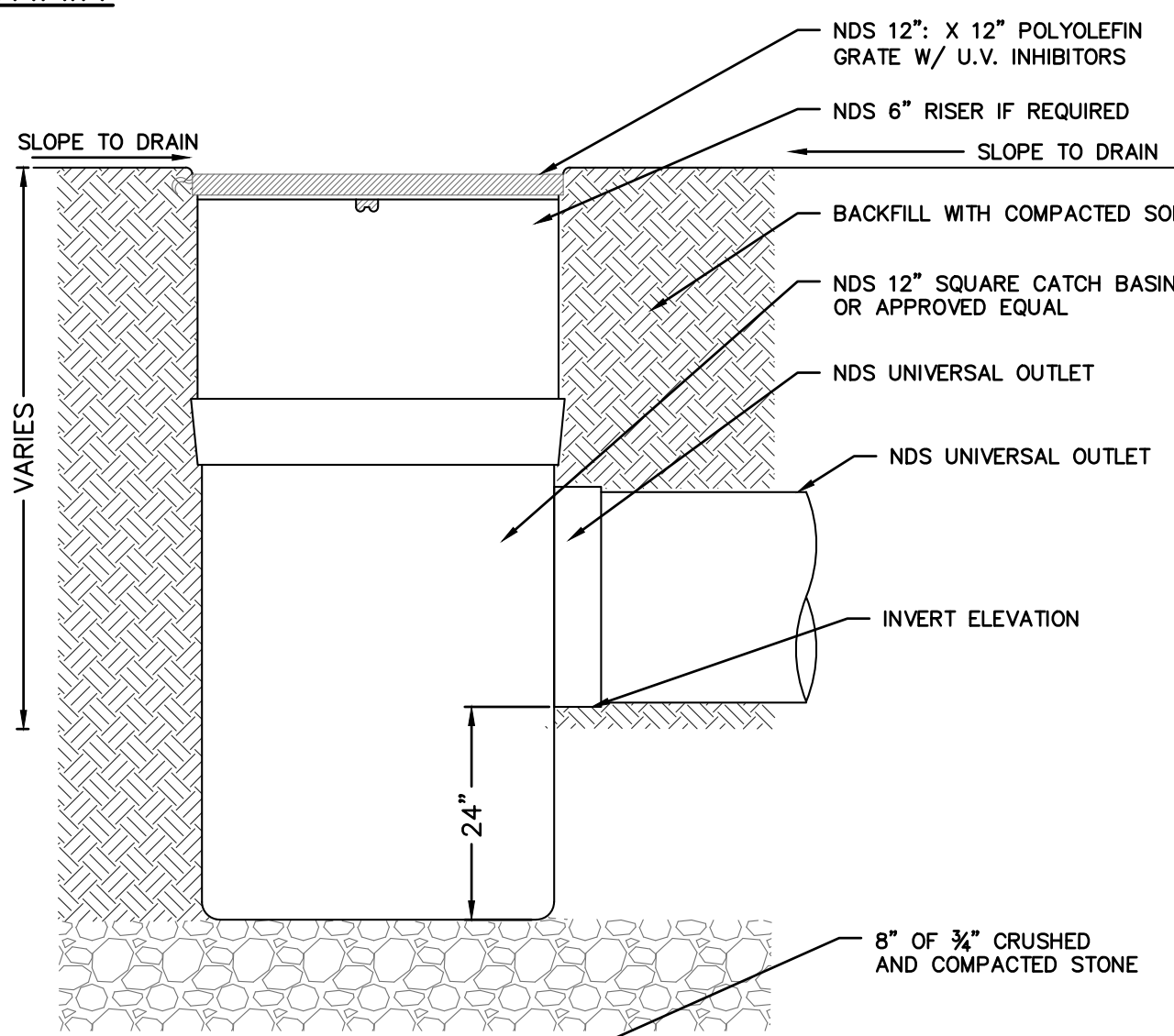
#### CORRUGATED CONCRETE WASHOUT



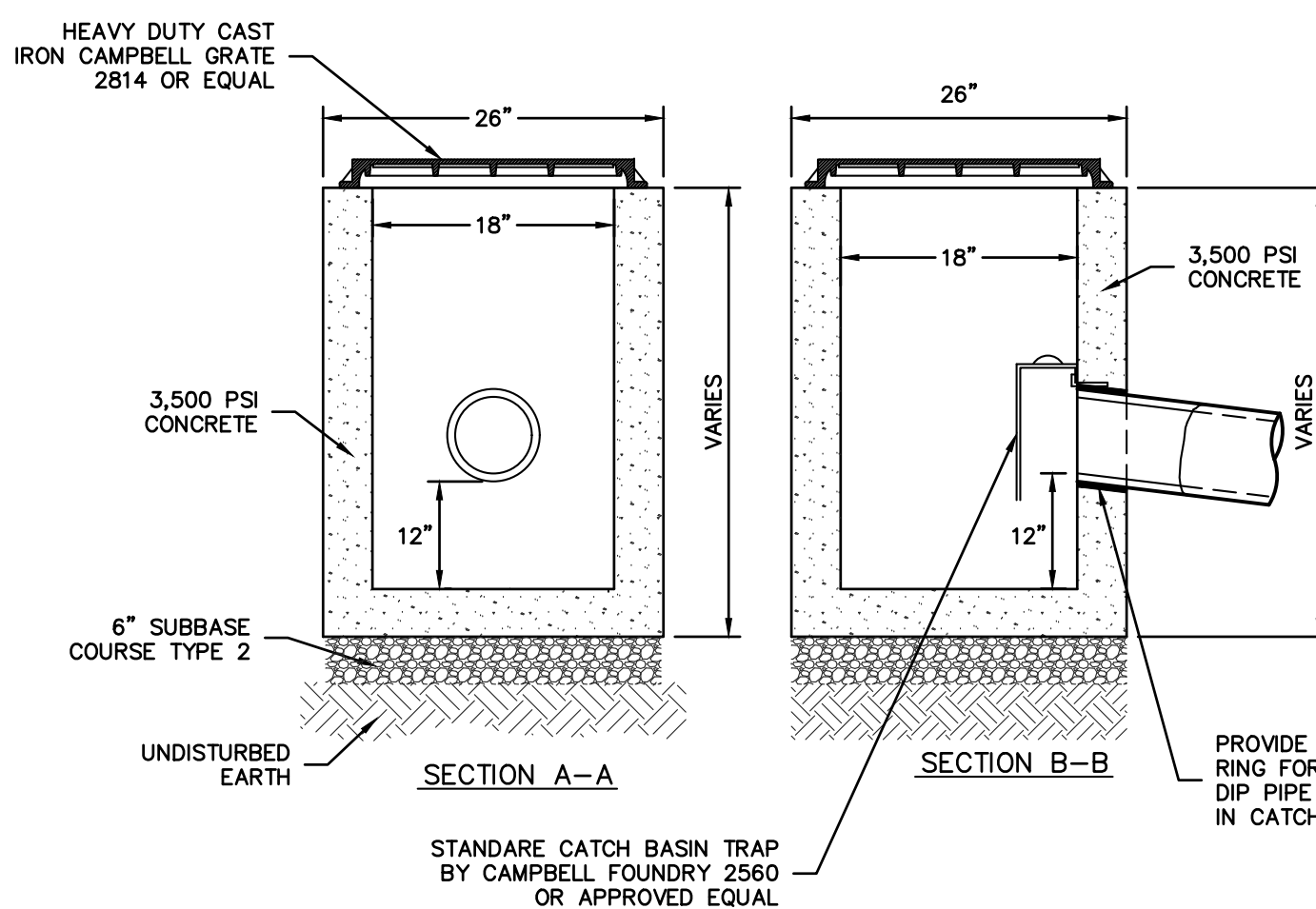
#### TRENCH BEDDING



#### STEEL TRENCH DRAIN



#### NDS SQUARE CATCH BASIN

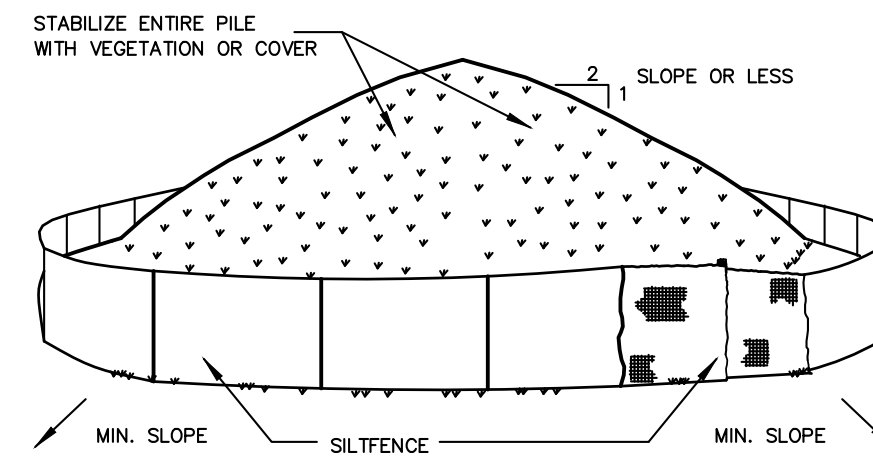


#### NOTES:

- CONCRETE - 3,500 PSI MINIMUM STRENGTH @ 28 DAYS
- DESIGN LOADING - AASHTO HS20-44
- EARTH COVER - 0 TO 5 FEET
- CONSTRUCTION JOINT - LAPPED

#### 18"x18" PRECAST CONCRETE CATCH BASIN

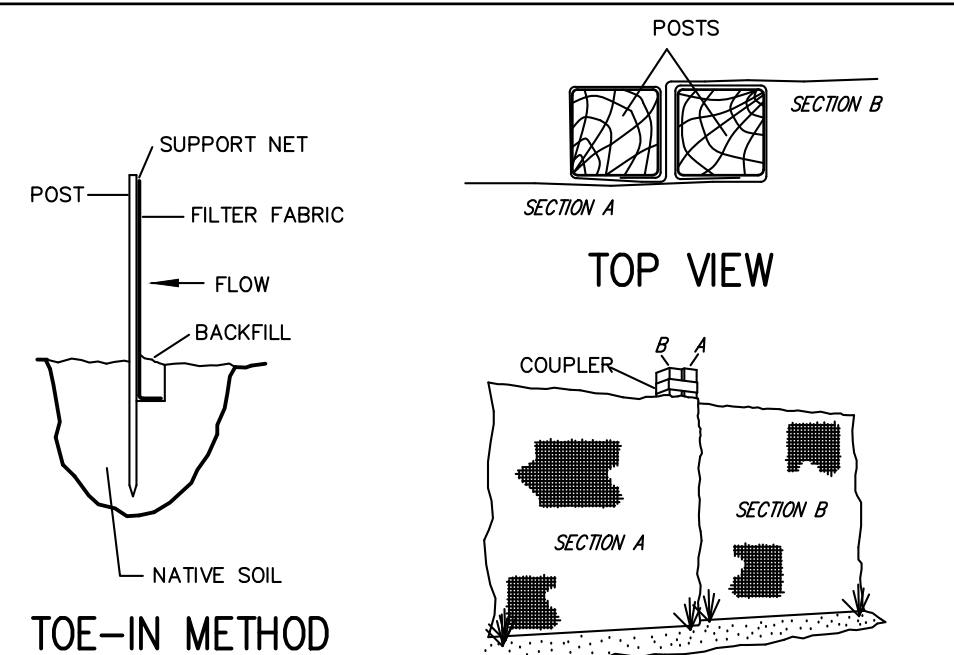
#### SOIL STOCKPILING



#### INSTALLATION NOTES

- AREA CHOSEN FOR STOCKPILING OPERATIONS SHALL BE DRY AND STABLE.
- SOILS OR FILL TO BE STOCKPILED ON SITE DURING CUTTING AND FILLING ACTIVITIES SHOULD BE LOCATED ON LEVEL PORTIONS OF THE SITE WITH A MINIMUM OF 50-75 FOOT SETBACKS FROM TEMPORARY DRAINAGE SWALES.
- UPON COMPLETION OF SOIL STOCKPILING, EACH PILE SHALL BE SURROUNDED WITH EITHER SILT FENCING OR STRAWBALES, THEN STABILIZED WITH VEGETATION OR COVERED.
- STOCKPILES REMAINING IN PLACE FOR MORE THAN A WEEK SHALL BE SEEDED AND MULCHED OR COVERED WITH GEOTEXTILE FABRIC SURROUNDED BY SILT FENCE.
- SEE SPECIFICATIONS (THIS MANUAL) FOR INSTALLATION OF SILT FENCE.

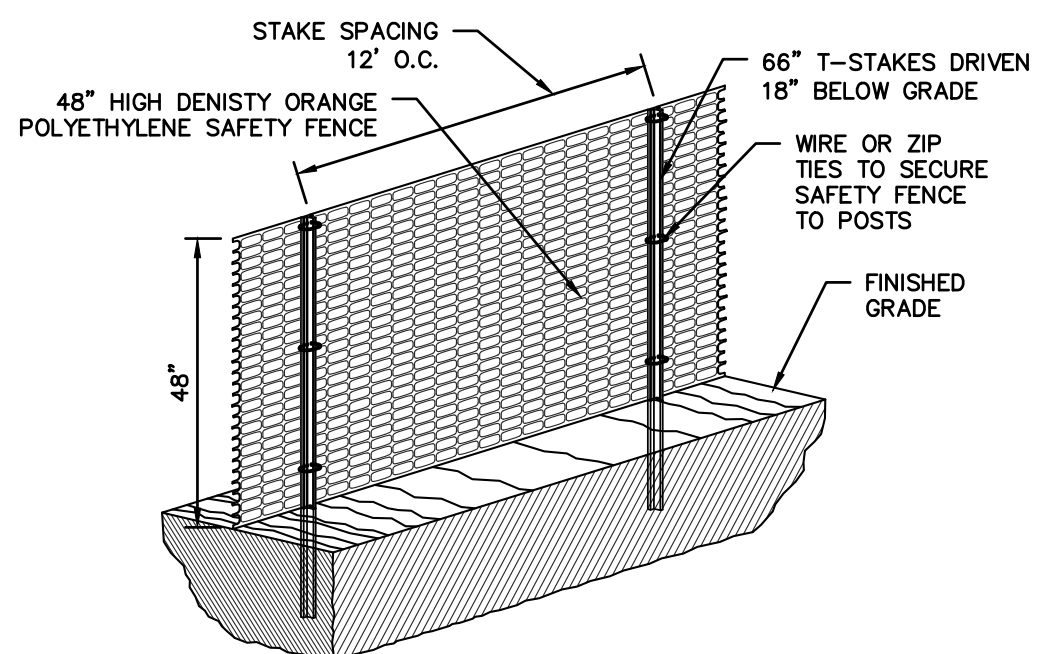
#### SILT FENCE



#### JOINING SECTIONS OF FENCING

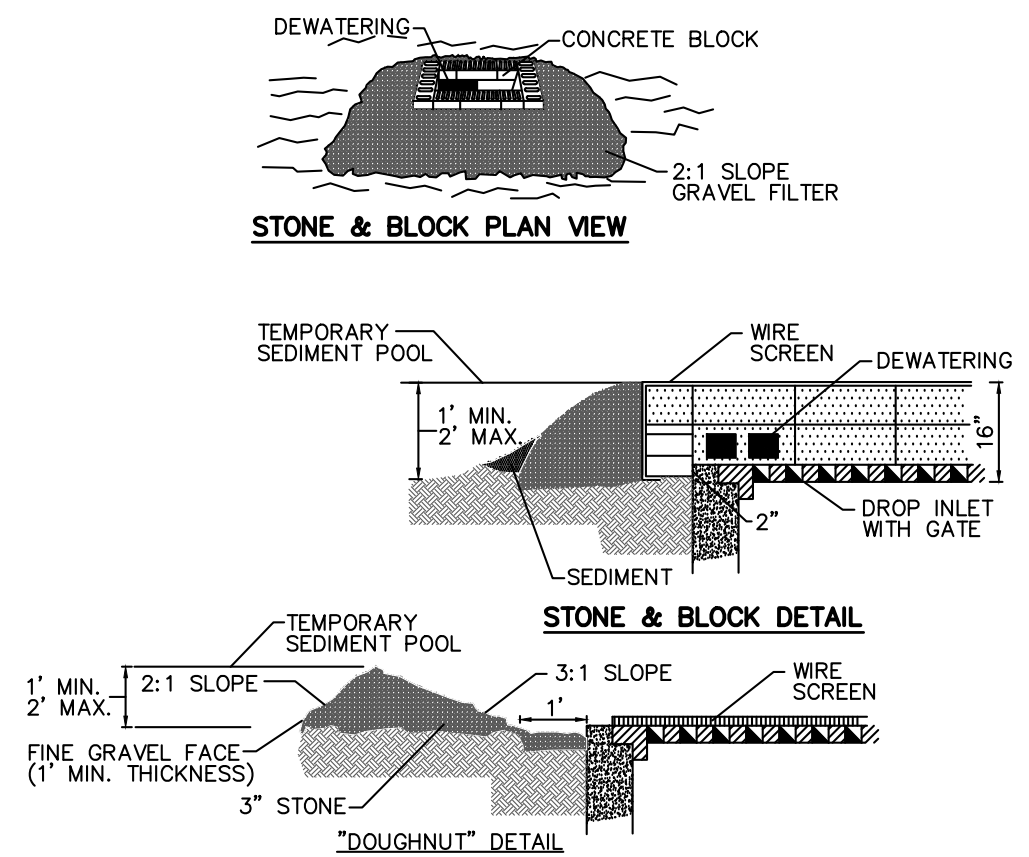
#### INSTALLATION NOTES:

- EXCAVATE A 4 INCH X 4 INCH TRENCH ALONG THE LOWER PERIMETER OF THE SITE.
- UNROLL A SECTION AT A TIME AND POSITION THE POSTS AGAINST THE BACK (DOWNSTREAM) WALL OF THE TRENCH (NET SIDE AWAY FROM DIRECTION OF FLOW).
- DRIVE THE POST INTO THE GROUND UNTIL THE NETTING IS APPROXIMATELY 2 INCHES FROM THE TRENCH BOTTOM.
- LAY THE TOE-IN FLAP OF FABRIC ONTO THE UNDISTURBED BOTTOM OF THE TRENCH. BACKFILL THE TRENCH AND TAMP THE SOIL. STEEPER SLOPES REQUIRE AN INTERCEPT
- JOIN SECTIONS AS SHOWN ABOVE.



#### CONSTRUCTION FENCE

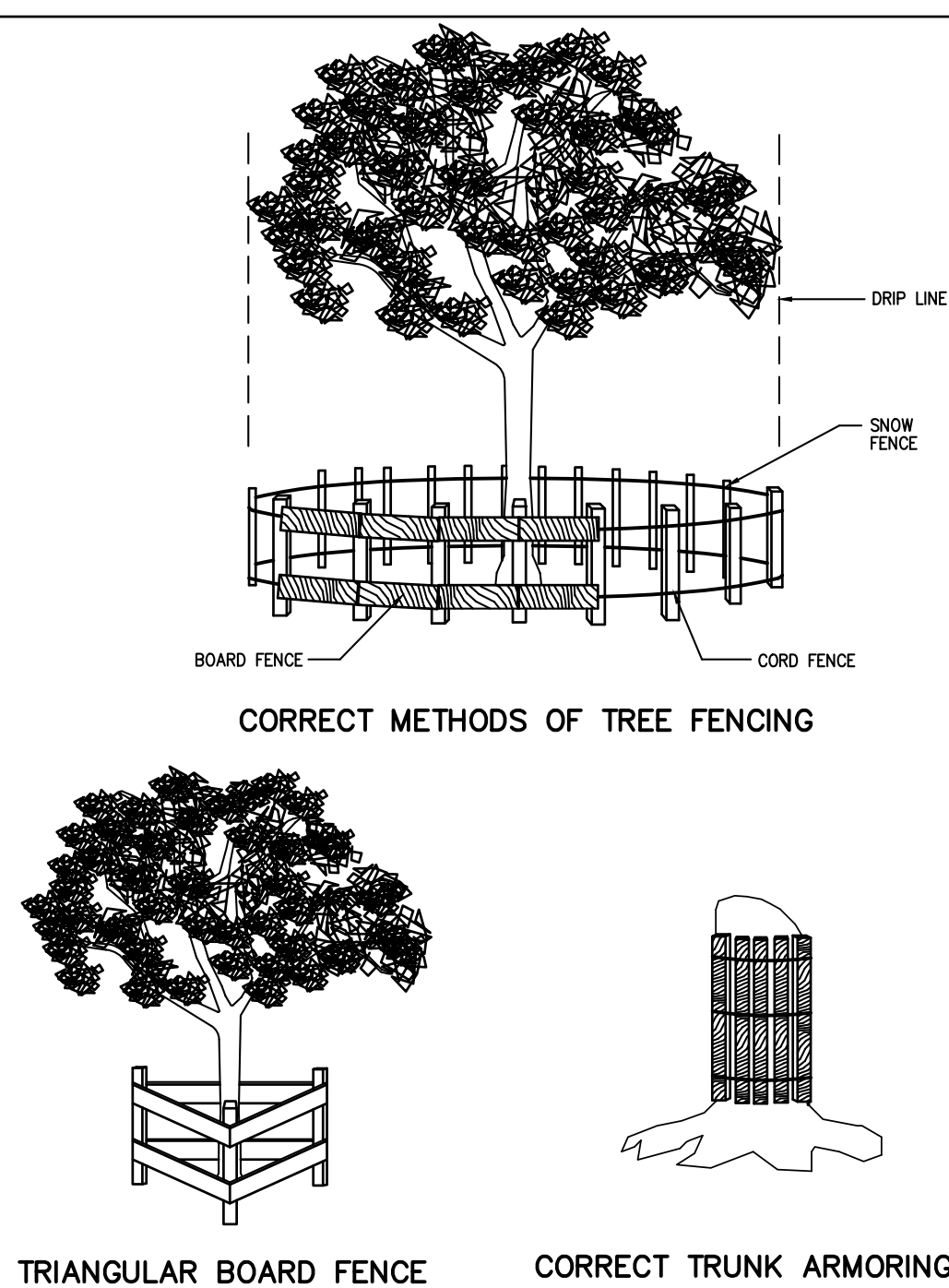
#### STONE & BLOCK DROP INLET PROTECTION



#### CONSTRUCTION SPECIFICATION

- LAY ONE BLOCK ON EACH SIDE OF THE STRUCTURE ON ITS SIDE FOR DEWATERING. FOUNDATION SHALL BE 2 INCHES MINIMUM BELOW REST OF INLET AND BLOCKS SHALL BE PLACED AGAINST INLET FOR SUPPORT.
- HARDWARECLOTH OR 1/2" WIRE MESH SHALL BE PLACED OVER BLOCK OPENINGS TO SUPPORT STONE.
- USE CLEAN STONE OR GRAVEL 1/2"-3/4 INCH IN DIAMETER PLACED 2 INCHES BELOW TOP OF BLOCK ON A 2:1 SLOPE OR FLATTER.
- FOR STONE STRUCTURES ONLY, A 1 FOOT THICK LAYER OF THE FILTER STONE WILL BE PLACED AGAINST THE 3 INCH STONE AS SHOWN ON THE DRAWINGS. MAXIMUM DRAINAGE AREA 1 ACRE.

#### FENCING AND ARMORING



PROJECT: <b>PROPOSED ADDITION &amp; ALTERATIONS          54 CLINTON AVENUE          VILLAGE OF DOBBS FERRY          WESTCHESTER COUNTY - NEW YORK</b>		
DETAILS <b>HUDSON          ENGINEERING          &amp;          CONSULTING, P.C.</b> 45 Knollwood Road - Suite 201 Elmsford, New York 10523 T: 914-909-0420 F: 914-560-2086		
REVISIONS 1. REVISED PER ENGINEERING COMMENTS 12/09/21 Date	THIS PLAN NOT VALID FOR CONSTRUCTION WITHOUT ENGINEER'S SEAL & SIGNATURE	Date: 11/18/21 Scale: 1" = 20' Designed By: S.G. Checked By: M.S. Sheet No. 2