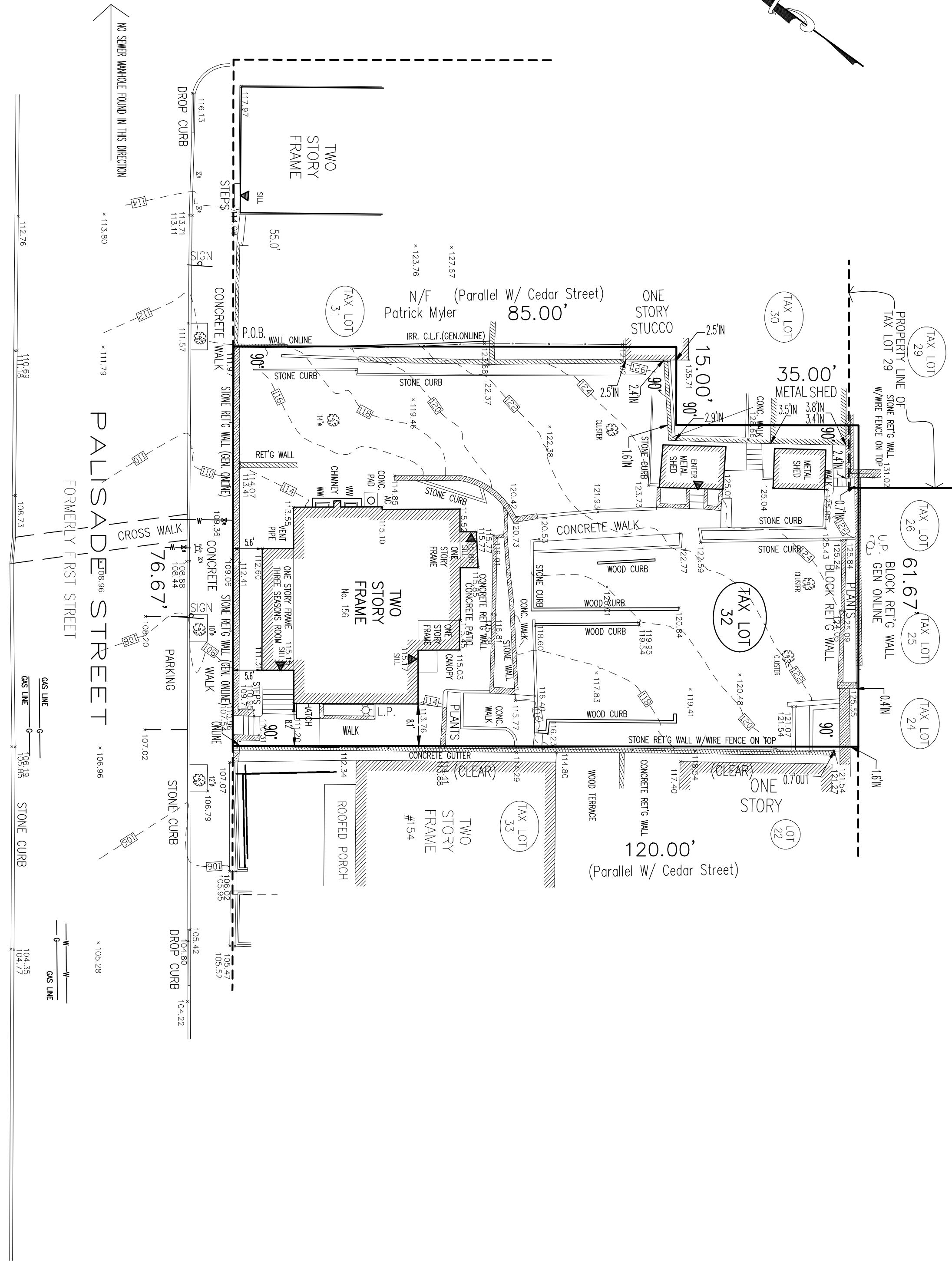


CEDAR STREET



LEGEND:	
	DROP CURB
	LIGHT
	LIGHT POLE
	TRAFFIC SIGN
	TREE(14\"/>
	UTILITY POLE
	HYDRANT
	WATER VALVE
	GAS VALVE
	DRAINAGE INLET
	CATCH BASIN
	SEWER MANHOLE
	ELECTRIC MANHOLE
	WATER MAIN
	SEWER (COMBINED)
	GAS LINE
	ELECTRIC LINE
	OVER HEAD WIRES
	CHAIN LINK FENCE
	TOP OF CURB
	BOTTOM OF CURB
	TOP OF WALL
	BOTTOM OF WALL
	LEGAL GRADE
	CABLE LINE

NOTE:

1. ELEVATIONS SHOWN HEREON ARE IN NAVD 1988 VERTICAL DATUM.
  2. THE INFORMATION GIVEN ON THIS SURVEY PERTAINING TO UTILITIES AND OR SUBSTRUCTURES IS NOT CERTIFIED FOR ACCURACY OR COMPLETENESS.
  3. SEWER MANHOLE RIM AND INVERT ELEVATIONS SHOWN HEREON WERE OBTAINED FROM FIELD MEASUREMENTS.
  4. WATER, ELECTRIC AND GAS LINES SHOWN HEREON ARE TAKEN FROM FIELD MARKING AND MUST BE VERIFIED BEFORE ANY DESIGN.
  5. CONSULT THE APPROPRIATE UTILITY COMPANY PRIOR TO DESIGNING IMPROVEMENTS.
  6. THIS SURVEY WAS PREPARED WITHOUT THE BENEFIT OF AN ABSTRACT OF TITLE AND IS SUBJECT TO ANY STATE OF FACTS THAT MAY BE REVEALED BY AN EXAMINATION OF SUCH.
  7. UNDER GROUND UTILITIES WERE NOT MARKED BY CODE 753, AS A RESULT UNDER GROUND CONNECTIONS COULDN'T BE VERIFIED.
- CALL BEFORE YOU DIG:  
PRIOR TO COMMENCEMENT OF ANY CONSTRUCTION CALL 1800-272-4480.

REVISIONS	
NO.	DATE

GRAPHIC SCALE  
( IN FEET )  
1 inch = 16 ft.

JOB NUMBER  
WCRO539-14(TOPG)

DATE: MARCH 18, 2019  
DATE: MAY 04, 2019  
(RE-CONFIGURED PROPERTY LINES)

SCALE: 1"= 16.0'  
Measurement in U.S. Standard.

**TOPOGRAPHICAL SURVEY OF  
TAX LOT 32 IN BLOCK 40, SECTION 3.80  
AS SHOWN ON THE OFFICIAL TAX MAPS OF  
VILLAGE OF DOBBS FERRY  
LOCATED AT  
VILLAGE OF DOBBS FERRY  
TOWN OF GREENBURGH  
WESTCHESTER COUNTY NEW YORK.**

COPYRIGHT ©2019 SUMMIT LAND SURVEYING P.C.

This is to certify that this map and the survey on which it is based were made in accordance with the "Minimum Standard" Detail Requirements for the New York State Association of Land Surveyors.

Rakesh R. Behal, L.S. New York State License Number 050666.

**Summit Land Surveying P.C.**  
21 Drake Lane,  
White Plains NY 10607.  
Tel. 9146297758