






# MATERIALS - SPECS - 2/7/23

MARVIN®

## THE MARVIN PORTFOLIO

The Marvin portfolio consists of five product lines organized into three distinct collections defined by the degree of design detail and customization opportunities.

Marvin windows and doors offer exceptional performance, energy efficiency, low maintenance, and quality you can see, feel, and touch to help bring your vision to life.

	 <p><b>ULTIMATE</b> Most extensive selection of features, options, and product types</p>	 <p><b>MODERN</b> Design flexibility in a purely modern aesthetic available exclusively at Marvin Modern dealers</p>	 <p><b>COASTLINE</b> Custom windows and doors for high velocity hurricane zones in the coastal Southeast</p>	 <p><b>ELEVATE</b> Wide range of options and product types</p>	 <p><b>ESSENTIAL</b> Curated options and product types</p>
	<b>MARVIN SIGNATURE® COLLECTION</b>			<b>MARVIN ELEVATE® COLLECTION</b>	
INTERIORS	<b>WOOD</b> 6 species options + custom 2 painted or primed options 6 stains + clear coat	<b>EXTRUDED ALUMINUM</b> 5 color options	<b>EXTRUDED ALUMINUM</b> 6 solid colors, 4 woodgrain finishes	<b>WOOD</b> Bare pine, painted Designer Black, painted White, or clear coat	<b>FIBERGLASS</b> 3 color options
EXTERIORS	<b>EXTRUDED ALUMINUM</b> 19 colors + custom <b>OR</b> <b>WOOD</b> 3 species + custom	<b>FIBERGLASS</b> 5 color options	<b>EXTRUDED ALUMINUM</b> 6 solid colors, 4 woodgrain finishes	<b>FIBERGLASS</b> 5 color options	<b>FIBERGLASS</b> 5 color options
SIZING	Standard + custom sizing for replacement, remodeling, or new construction	Custom sizing for remodeling or new construction	Custom sizing for replacement, remodeling, or new construction	Standard + custom sizing for replacement, remodeling, or new construction	Standard + custom sizing for replacement, remodeling, or new construction
HARDWARE	Extensive selection including Marvin Gallery Hardware	Minimalist hardware for modern design aesthetic	Available in multiple styles, sizes, and finishes to complement the window + door aesthetics	Available in 6 finish options with 2 door handle styles	Available in 6 finish options with 1 door handle styles
COASTAL + WATERFRONT	Hurricane Impact Zones 3 and 4, + PG 50 Products		All products rated for High Velocity Hurricane Zone (IZ4)	Hurricane Impact Zone 3, + PG 50 Products	

## DOUBLE HUNG



## DOUBLE HUNG

- Equipped with a standard full screen; optional half screen is available.
- Tilt latches are ergonomically designed and easy to operate, making tilting and cleaning effortless.
- Sash lock provides a positive detent, reassuring the user that the window is either locked or unlocked.
- Up to PG50 performance rating.
- Equal, Cottage, and Reverse Cottage sash provide a variety of looks and checkrail heights.
- Available in standard and special sizes up to 4 feet 6 inches wide by 7 feet high.
- Coordinating Picture and Transom windows also available.
- Double Hung Insert option features ¾ inch insert replacement frame with through jamb installation and up to PG40 performance rating.



DOUBLE HUNG



DOUBLE HUNG INSERT



Available with I23  
(Excludes Insert option)



## CASEMENT + AWNING



Casement windows with  
Matte Black hardware



Casement windows in White

## CASEMENT + AWNING

- Multi-point sequential locking system provides superior PG50 performance rating with single lever operation.
- Interior screen features an aluminum surround and concealed pressure mounting points for ease of operation and enhanced aesthetics.
- Operating, transom, and picture units available.
- Folding handle neatly stows out of the way. Stainless steel coastal hardware available.
- Casement available in standard and special sizes up to 3 feet wide by 6 feet high.
- Awning available in standard and special sizes up to 4 feet wide by 4 feet high.
- Coordinating Picture and Transom windows also available.
- Narrow frame option with 3 1/4 inch insert replacement frame, flat sill, and through jamb installation.



CASEMENT + AWNING



CASEMENT NARROW FRAME + AWNING NARROW FRAME



Available with I23  
(Excludes Narrow Frame option)

## SLIDING FRENCH DOOR

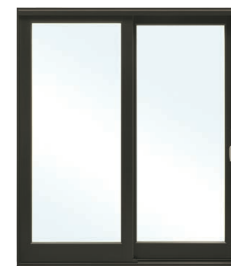


## SLIDING FRENCH DOOR

- Wide stile and rail construction showcases the rich wood interior.
- Low-maintenance fiberglass exteriors and rich pine interiors with a variety of finish options.
- Configurations of 2-, 3-, or 4-panels, up to approximately 16 feet wide by 8 feet high.
- Up to PG40 performance rating.
- Optional PG50 performance rating on 2- and 3-panel configurations up to 9 feet wide by 8 feet high.
- Dual ball-bearing rollers for smooth operation.
- Bronze or Beige sill available.



INTERIOR



EXTERIOR

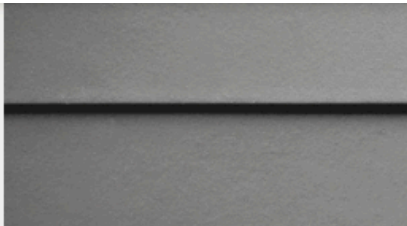


SILL DETAIL SHOWN IN BRONZE



Available with I23





HARDIE® PLANK LAP SIDING

## SMOOTH

You can't go wrong with this sleek, modern siding. Find the perfect color in our Statement Collection products or Dream Collection products. Or get it primed for paint.



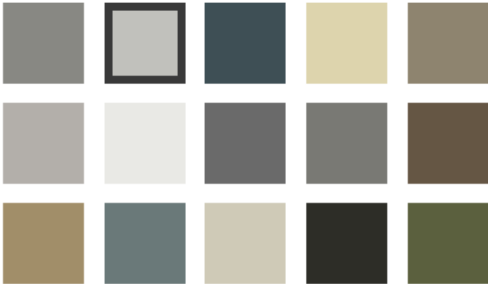
### THE STATEMENT COLLECTION™

Classic shades—engineered with long-lasting ColorPlus® Technology—will make a statement that resonates for generations. The tried and true colors of James Hardie's Statement Collection™ products were designed for every home. They're our most popular hues. And they are readily available in your region.



#### SIDING COLORS

Light Mist



[Request a Quote >](#)

[Request a Sample >](#)

Colors shown may vary due to screen resolution.  
Please see actual product sample for true color.

#### AVAILABLE SIZES

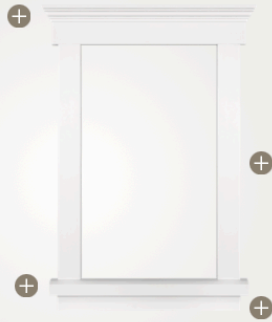
<b>THICKNESS:</b> 0.312"	<b>WIDTHS:</b> 8.25" <b>EXPOSURES:</b> 7"
<b>LENGTH:</b> 144" boards	



Creative freedom meets innovative efficiency with AZEK Surround designs. AZEK engineers created a series of classic window and door surround designs to make style choices simple. Single-structure, pre-milled profiles reduce costly carpentry and assembly steps. Built with varying shadow line compositions, visual widths and matched with a complementary sill profile, each AZEK Surround has its own persona. Bring sophisticated styling and moisture management without breaking the budget.

[Visit the BIM library to easily download BIM content on Window Surrounds for designing in REVIT.](#)

[➤ DOWNLOAD BIM/REVIT](#)



### Historic Rams Head

Add visual appeal with subtle details. The Historic Rams Head Surround has an attractive one-piece crown mould and wide head to make installation a breeze. Deliver an engaging yet simple aesthetic commonly used in Arts and Crafts style home. Click the "+" icons above to see profile details for creating the Historic Rams Head surround.







We protect what matters most™

ENGLISH

GAF PARTNER PORTAL

WHERE TO BUY

FIND A CONTRACTOR



Roof Shingles

Residential Roofing

Commercial Roofing

Homeowners

Professionals

About GAF

Find this product in:  
[Shingles](#)



Timberline® HDZ™ Charcoal

## Timberline HDZ® Shingles

The look people love, now with LayerLock® Technology and the StainGuard Plus™ Algae Protection Limited Warranty<sup>1</sup>

★★★★★ 4.8 (16613) [WRITE A REVIEW](#)

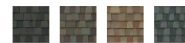
ALL COLORS

IN YOUR AREA

Color/Finish: **Charcoal**



Harvest Blend Color/Finish:



FIND A CONTRACTOR

## INSTALLATION MADE SIMPLE AND EFFICIENT

### INSTALLATION OPTIONS AND ACCESSORIES

#### 1. NAILING FIN

Pre-attached folding nailing fin and drip cap for easier installation.

#### 2. THROUGH JAMB

Available through jamb and installation bracket options.

#### 3. FACTORY-APPLIED JAMB EXTENSIONS

Factory-applied jamb extensions save time and labor. We supply 4 1/4", 6 3/4", and 6 13/16" jamb depth in bare wood, white, designer black, or clear interior finish.

#### 4. FACTORY-INSTALLED SCREENS

Factory-installed screens are a standard offering with operating windows. At no extra cost, we can ship your screens separately to reduce on-site damage prior to installation.

#### 5. FACTORY MULLED ASSEMBLIES

Available standard factory mulling, reinforced factory mulling, or field mulling kits. The reinforced mull meets AAMA 450 specifications and performs up to PG50 on standard products and up to PG55 on IZ3 rated products.

#### 6. CORNER KEYS

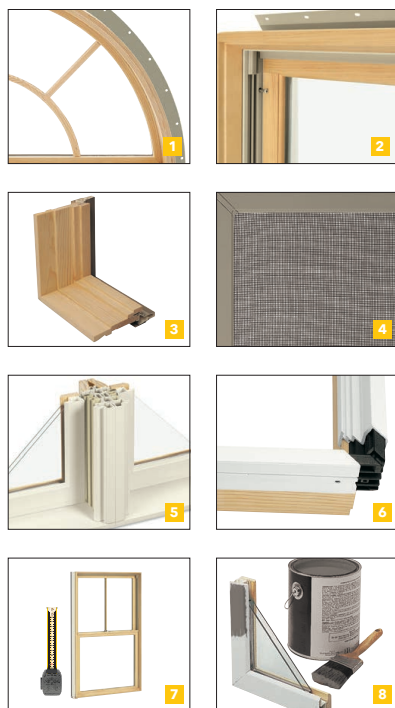
Integral corner keys keeps window and door units square and corners sealed.

#### 7. CUSTOM SIZES

Custom sizes are available on windows and doors in 1/4" increments for the perfect fit every time.

#### 8. PAINTABLE ULTREX EXTERIOR

The Ultrex® fiberglass exterior is paintable, and it holds dark colors better than vinyl or vinyl/wood composites.



### EXTERIOR TRIM

Ultrex Exterior Trim is offered with all rectangular Elevate products in all five exterior finishes. The durability, performance, and look of Marvin Elevate windows and doors can be extended to the trim.

#### BRICK MOULD

2" Brick Mould is available with or without 2 1/8" sill nosing.

#### FLAT

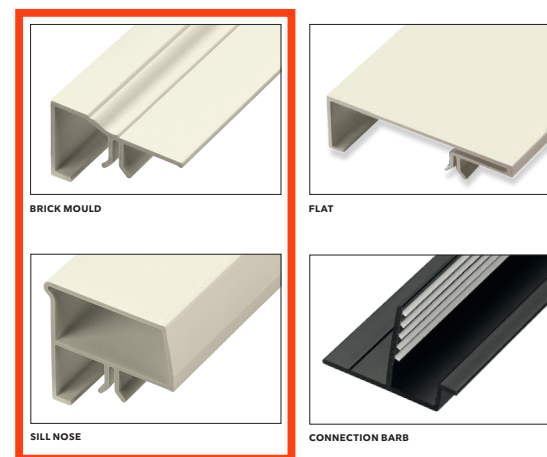
3 1/2" Flat Trim is available in Flat and Flat Ranch configurations with or without 2 1/8" sill nosing.

#### SILL NOSE

2 1/8" Sill Nose provides authentic sill appearance.

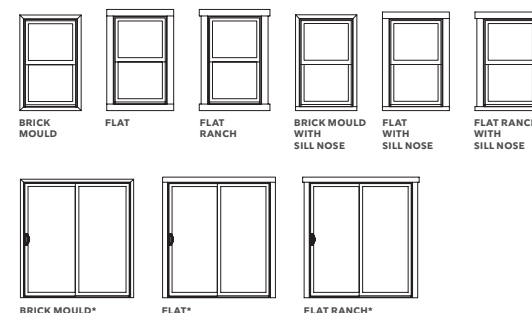
#### CONNECTION BARB

Barb and receiver attachment method provides for quick, secure installation.



### TRIM CONFIGURATIONS

Multiple configurations are available in lineal lengths and factory pre-cut kits in all five Elevate collection exterior colors.



\* Brick Mould, Flat, and Flat Ranch profiles are available on doors. Sill profiles are not included for door trim sets.

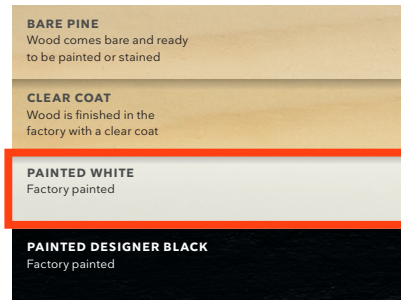


## DESIGN OPTIONS

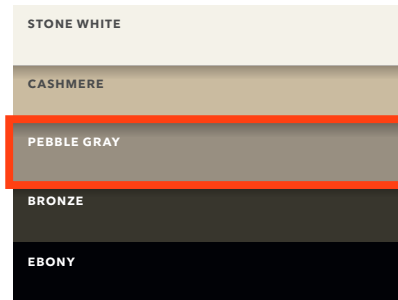
### INTERIOR AND EXTERIOR FINISHES

Elevate windows and doors features rich pine interiors and a durable, strong, and fully paintable Ultrex® fiberglass exterior, featuring our AAMA-verified acrylic finish for low-maintenance and superior aesthetics. Elevate Round Tops include the extruded aluminum exterior finished in commercial-grade paint for superior resistance to fading and chalking.

#### WOOD INTERIOR FINISHES



#### FIBERGLASS EXTERIOR COLORS



### DIVIDED LITES

#### GRILLES-BETWEEN-THE-GLASS (GBG)

Available in several popular lite cut options for a classic divided lite look and easy glass cleaning. Available in Stone White, Bronze, and Ebony interior and Stone White, Cashmere, Pebble Gray, Bronze, or Ebony exterior.\*

#### SIMULATED DIVIDED LITE (SDL)

Bars permanently adhered to both sides of the glass for a more authentic look. Available with or without spacer bar and in several lite cut options.



GRILLES-BETWEEN-THE-GLASS

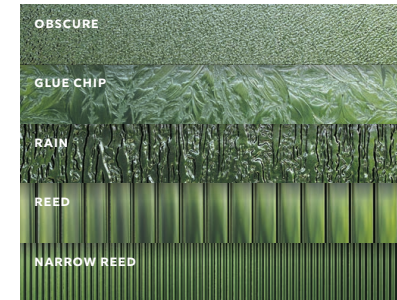


SIMULATED DIVIDED LITE

### GLASS OPTIONS

Glass is available with Standard Dual Pane or optional Triple Pane on select products. Available with Low E1, Low E2, Low E3, and Low E3/ERS insulated glass with argon gas.\* Options include glazing for sound abatement (STC/OITC), high altitudes, and California fire zones. Laminated glass is also offered in products designed specifically for hurricane zones.

#### DECORATIVE GLASS



### SIMULATED CHECKRAIL

Simulated Checkrail is the perfect solution when aesthetics call for the beauty of a double hung, but operation, egress, or performance demand another solution.

You specify placement of the horizontal simulated checkrail bar and the lite cut patterns above and below.

These illustrations offer a sampling of 7/8" Simulated Divided Lite (SDL) patterns that can be selected in combination with the 2 1/2" Simulated Checkrail on Casement, Awning, Glider, Direct Glaze Rectangle, Picture windows, and all Elevate doors.



## HARDWARE STYLES

### WINDOW HARDWARE

Windows feature classic low-profile durable hardware for clean aesthetics, safety, and security.



**SASH LOCK + KEEPER**  
Double Hung and Glider



**FOLDING HANDLE**  
Casement and Awning



Double Hung window in Designer Black with Matte Black Sash Lock + Keeper

### DOOR HANDLES

Door handles are available in two distinct hardware styles.



**CAMBRIDGE**



**NORTHFIELD**

#### DOOR HANDLE OPTIONS

- Available keyed-alike option (use one key on multiple locks, with up to 3 different keys on each project).
- Choose a distinct interior and exterior handle finish that matches or complements the interior and exterior color of your door.

### FINISHES

**MATTE BLACK**

**OIL RUBBED BRONZE (PVD)**

**ALMOND FROST**

**SATIN NICKEL (PVD)**

**BRASS (PVD)**

**WHITE**

Choose from a variety of hardware finishes to complement your Elevate collection windows and doors.

The Physical Vapor Deposition (PVD) process adds a layer of toughness to hardware exposed to environmental factors like direct sun and humidity. PVD finishes resist fading and discoloration, even in coastal areas. PVD has the highest grade corrosion resistant finish.

PVD finish is available on exterior door hardware in Oil Rubbed Bronze, Satin Nickel, and Brass.



Casement Narrow Frame window with Oil Rubbed Bronze Folding Handle and Lock Lever



Inswing French door with Cambridge Handle in Satin Nickel PVD