

Ledge Indoor/Outdoor LED Wall Sconce

By Modern Forms



Call Us (877) 445-4486

Ledge Indoor/Outdoor LED Wall Sconce
By Modern Forms

Product Options

Finish: Bronze,
Size: 14 inch

Details

Luminous Architectural Profile
ACLED driverless technology
Dimmer Range: 10%

Dimensions

14 inch Option Fixture: Width 5", Height 14", Depth 4"

Lighting

14 inch

Lamp Type	LED Built-in
Total Lumens	626
Total Watts	14.90
Volts	120
Color Temp	3000 (Soft White)
Average Lifespan (Hours)	54,000
CRI	90
Equivalent Halogen, CFL or LED Bulb Can Be Used	No

Additional Details

Product URL:

<https://www.lumens.com/ledge-indoor-outdoor-led-wall-sconce-by-modern-forms-MFM546059.html>

Rating: ETL Listed Wet

ITEM#: MFM546059



Notes:

Prepared
by:

Prepared for:
Project:
Room:
Placement:
Approval:



MARVIN ELEVATE[®] AND ESSENTIAL[™]

Exterior Color Options

A strong alternative to vinyl, our Ultrex[®] pultruded fiberglass exterior finish is applied through a proprietary process to provide a superior, consistent finish. The American Architectural Manufacturers Association (AAMA) awards certifications to materials that pass numerous, rigorous tests. These tests simulate the harsh conditions that a finish will encounter throughout the life of the window or door. Passing these specification tests and achieving AAMA 624 verification gives independent verification that the Ultrex finish is best in class among fiberglass products.

Built for durability and low-maintenance, our Ultrex finish is 3x thicker than competitive finishes, with a smooth consistency and strong finish that resists fading, chalking, peeling and cracking, even in the darkest colors. If a design change calls for a new color down the road, our material can be painted without voiding our warranty. Six colors are available in neutral and dark tones.

Selected: Stone White

Stone White

Unit Features

Elevate Casement: ELCA

Elevate Awning: ELAWN

Elevate Casement Picture: ELCA P

Elevate Casement Transom: ELCA TR

Elevate Casement IZ3: ELCA IZ3

Elevate Casement Picture IZ3: ELCA P IZ3

Elevate Awning IZ3: ELAWN IZ3

For applicable Certification and Code information, refer to the Introduction and Product Performance chapter.

Frame and Sash:

- The frame and sash exteriors are made of Ultrex®, an advanced fiber reinforced material that is resistant to thermal conductance.
- Exterior colors: Stone White, Pebble Gray, Bronze, Evergreen, Cashmere, or Ebony. Frame and sash color may be selected independently.
- The interior is non finger-jointed pine, kiln dried to a moisture content of 6-12% at time of fabrication.
- Interior wood is available as Pine bare wood or factory applied white, clear, or designer black interior finishes. Frame and sash color may be selected independently.

Frame:

- Composite frame thickness is 1 5/16" (33). Frame width is 4 9/16" (116). 4/4 non finger-jointed pine interior stop is applied to all units. Ultrex frame is .080" (2) thick.

Sash:

- Composite sash thickness is 1 9/16" (40) with standard glass. Tripane sash are 1 31/32" (50) thick. Sash is .070" (2) thick.

Jamb Extension:

- Extension Thickness: 9/16" (14)
- Multiple depths available from 1/8" (3), 1/4" (6), and depths varying between 1/2" (13) and 4" (102) at 1/16" (2) increments
- Maximum jamb depth is 8 9/16" (217)
- 6 9/16" (167) or 6 13/16" (173) jamb extension - factory-applied
- All other jamb depth options are available shipped loose.
- Material: Bare Pine
- Option: factory applied white, designer black and clear lacquer interior finish

Casement Hardware:

- Dual arm roto hardware factory installed on casement units
 - Roto gear hardware is an E-coated, high strength, low alloy steel
 - Call number 17 and 21 widths up to RO 25" (635) require dyad operators.
- The hinge track is stainless steel
 - hinge arm is E-coated high strength, low alloy steel
 - hinge shoe is injection molded with a stainless steel insert.
- Egress hinge is required on units with an R.O. from 27.125" to 29.984" including CN 29 to meet egress code. This hinge does not allow for cleaning of the exterior of sash from the inside.
- Folding handle with removable snap fit covers are available in Almond Frost or White color finish.
 - Optional Brass, Satin Nickel, Oil Rubbed Bronze, and Matte Black hardware available.
- Sequential locks are used on all heights, with removable escutcheon and handle.
 - Optional coastal hardware is available.
- Optional factory applied Window Opening Control Device is available (min size: 17 27/32" (453) x 31 1/8" (791) - max size: 36" (914) x 71 1/8" (1807))
 - Available in almond frost, white, and matte black finishes.
- Optional field or factory applied Sash Limiter - 3" Travel is available (min size: 23" (584) x 31 1/8" (791) - max size: 36" (914) x 71 1/8" (1807))
 - Custodial and Non-Custodial options are available. Units with sash limiters do not meet egress criteria.

Unit Features Continued

Awning Hardware:

- Scissors arm roto hardware factory installed on all awning units.
 - Roto hardware is an E-coated high strength, low alloy steel.
- The hinge track is stainless steel
 - hinge arm is E-coated high strength, low alloy steel
 - hinge shoe is injection molded with a stainless steel insert.
- Folding handle with removable snap fit covers are available in Almond Frost, White, or Matte Black color finish.
 - Optional Brass, Satin Nickel, and Oil Rubbed Bronze hardware available.
- A single point lock on each jamb/stile, with a removable escutcheon and handle
 - Optional coastal hardware is available
- Optional field or factory applied Sash Limiter - 3" Travel is available (min size: 24" (610) x 23" (584) - max size: 48" (1219) x 47 1/8" (1197)). Custodial and Non-Custodial options are available.

Glazing:

- Dual-pane units are manufactured with an 11/16" (17) IG with Low E1, E2, E3, or E3/ERS or no coating including argon gas or air fill.
- Tripane units are manufactured with a 1 1/8" (29) IG with a combination coating consisting of Low E2 on surface 2 and Low E1 on surface 5 including argon gas fill.
- Tempered glass and/or obscure glass, and California Fire glass (annealed exterior and tempered interior glazing configuration) are available as an option.
- The glazing seal is a silicone bedding on both interior and exterior surfaces utilized in a sandwich style sash.
- STC/OITC values are available for 3.1 mm thickness glass.
 - Optional 3.1/4.7 STC/OITC Upgrade glass is available. See the Product Performance chapter for STC and OITC ratings.
- Decorative glass options include glue chip, rain, reed, narrow reed, frost, and tinted (bronze, gray or green), Decorative glass is not available with Low E1, Low E3/ERS, tripane, or STC/OITC Upgrade options.

CE Glazing:

- Dual-pane units are manufactured with an 11/16" (17) IG with Low E2, E3, or E1 coatings including argon gas fill.
- Tripane units are manufactured with a 1 1/8" (29) IG with a combination coating consisting of Low E2 on surface 2 and Low E1 on surface 5 including argon gas fill.
- Tempered glass is available as an option.
- The glazing seal is a silicone bedding on both interior and exterior surfaces utilized in a sandwich style sash.
- CE glazing is available on operator and stationary casement units up to CN3771.
 - Awning units, operable and stationary are available up to CN4947.
 - Casement pictures and transoms are not available with CE mark. Bows and Bays are not available with CE mark

IZ3 Glazing:

- Optional IZ3 available on selected sizes.
 - IZ3 for winds up to 140 miles per hour.
- Glass is laminated insulated Low E2 or E3 Argon, consisting of annealed or tempered glass exterior and laminated glass interior.
- The laminated glass is comprised of two pieces of glass with either a SGP or PVB laminate layer between.
 - Interior and exterior glazing compound is silicone, in a sandwich style glazing system.
 - Not available with CE product.

Installation:

- Factory applied folding nailing fin and drip cap system
 - Optional installation brackets for masonry available
 - Optional through jamb installation method available
- Factory mullions available up to 4W or 113" (2870) not to exceed 71 5/8" (1819) height or 2W2H with 94 3/4" (2407) height not to exceed 73" (1854) in width
- Factory supplied field mulling kits are available for standard assemblies, or 30°, 45° Bay, and Bow assemblies
- Picture units may require both nailing fin and installation brackets
- IZ3 glazed units require installation clip with nailing fin on all sizes for installation unless another installation method is selected (masonry installation brackets or through jamb installation).

Unit Features Continued**Weather Strip:**

- All units are dual weather stripped.
- Frame and sash are weather stripped on all four sides with an extruded PVC bulb.
- Foam filled bulb is only on the frame, the sash has a hollow bulb.

Screen:

- Roll formed aluminum frame with corner key construction
- Available in an Almond Frost, Ebony or White.
 - Optional interior wood veneer screen available on Almond Frost only.
- Charcoal color fiberglass (non-corrosive) screen cloth.
- Spring loaded pins for installation.

Interior / Exterior Simulated Divided Lites (SDL):

- Interior bar: 7/8" (22) wide bars
 - Pine bare wood or factory applied white finish, to match interior
- Exterior bar: 7/8" (22) wide bars Ultrex, finish to match exterior
 - Patterns available: rectangle, 6 or 9 lite Prairie cut or Cottage style cut
 - Simulated check rail option: 2 11/32" (60)
 - Pattern available: simulated rail in standard center or customer specified location with 7/8" (22) pattern above, below or both in pattern of rectangular equal lite or prairie lite cut
- SDL is unavailable with rain, reed and narrow reed decorative glass options. Glue Chip requires tempered glass. Tinted glass not available with spacer bar.

Grilles-Between-The-Glass (GBG):

- 23/32" (18) contoured aluminum bar placed between two panes of glass
- Pattern: Standard rectangular pattern, 6 or 9 lite Prairie cut, or Cottage style cut
 - Exterior colors: Stone White, Pebble Gray, Bronze, Evergreen, Cashmere, or Ebony
- Interior Colors: White, Bronze, or Black.
- GBGs are not available on IZ3 or tinted units.

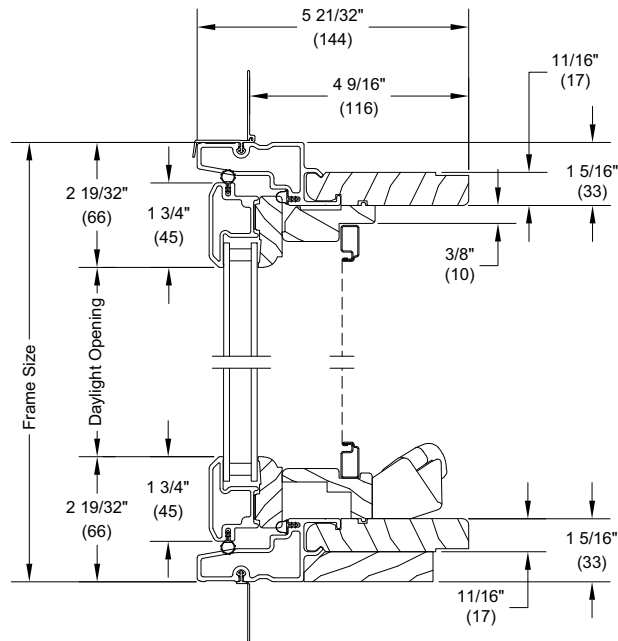
Exterior Casing:

- Non-integral to the unit
- Fastened to the exterior wall with barb and kerf
- 2" (51) brick mould available as a full surround or with sill nosing
- 3 1/2" (89) flat casing available as full surround or with sill nosing
 - Also available with 1" (25) ranch style sill and header overhang

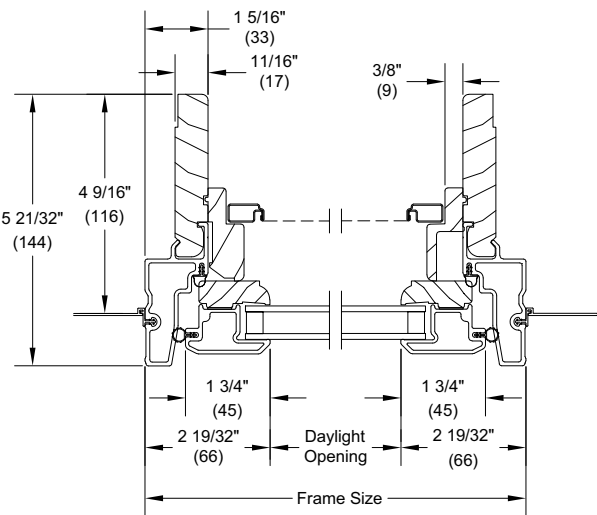
Section Details: Operating - Casement / Awning

Scale: 3" = 1' 0"

Operating - 4 9/16" (116)

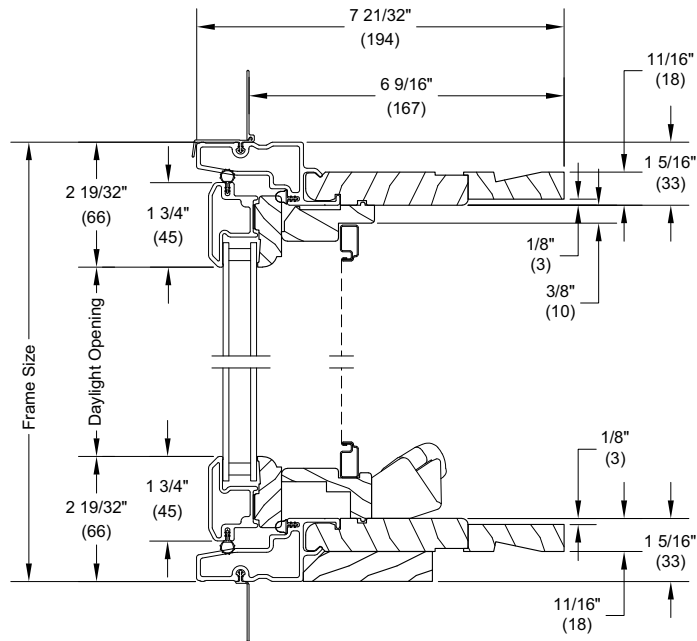


Head Jamb and Sill

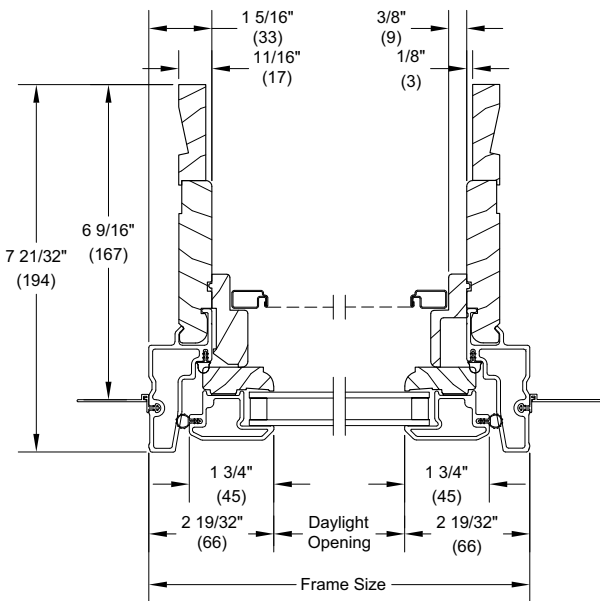


Jambs

Operating - 6 9/16" (167)



Head Jamb and Sill



Jambs

ELEVATE + ESSENTIAL

MARVIN ELEVATE™ COLLECTION | MARVIN ESSENTIAL™ COLLECTION



Window Products



Casement



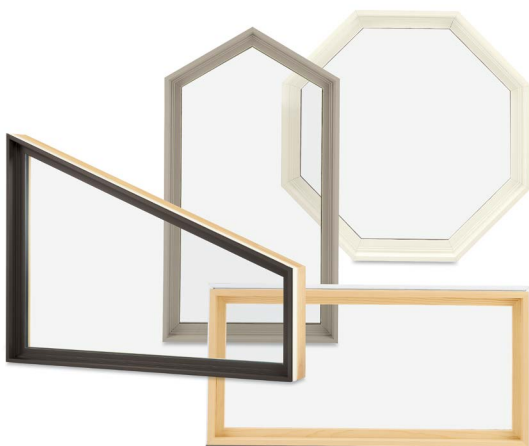
Awning



Double Hung



Glider



Polygon



Round Top

Door Products



Sliding Patio Door



Sliding French Door



Inswing French Door



Outswing French Door