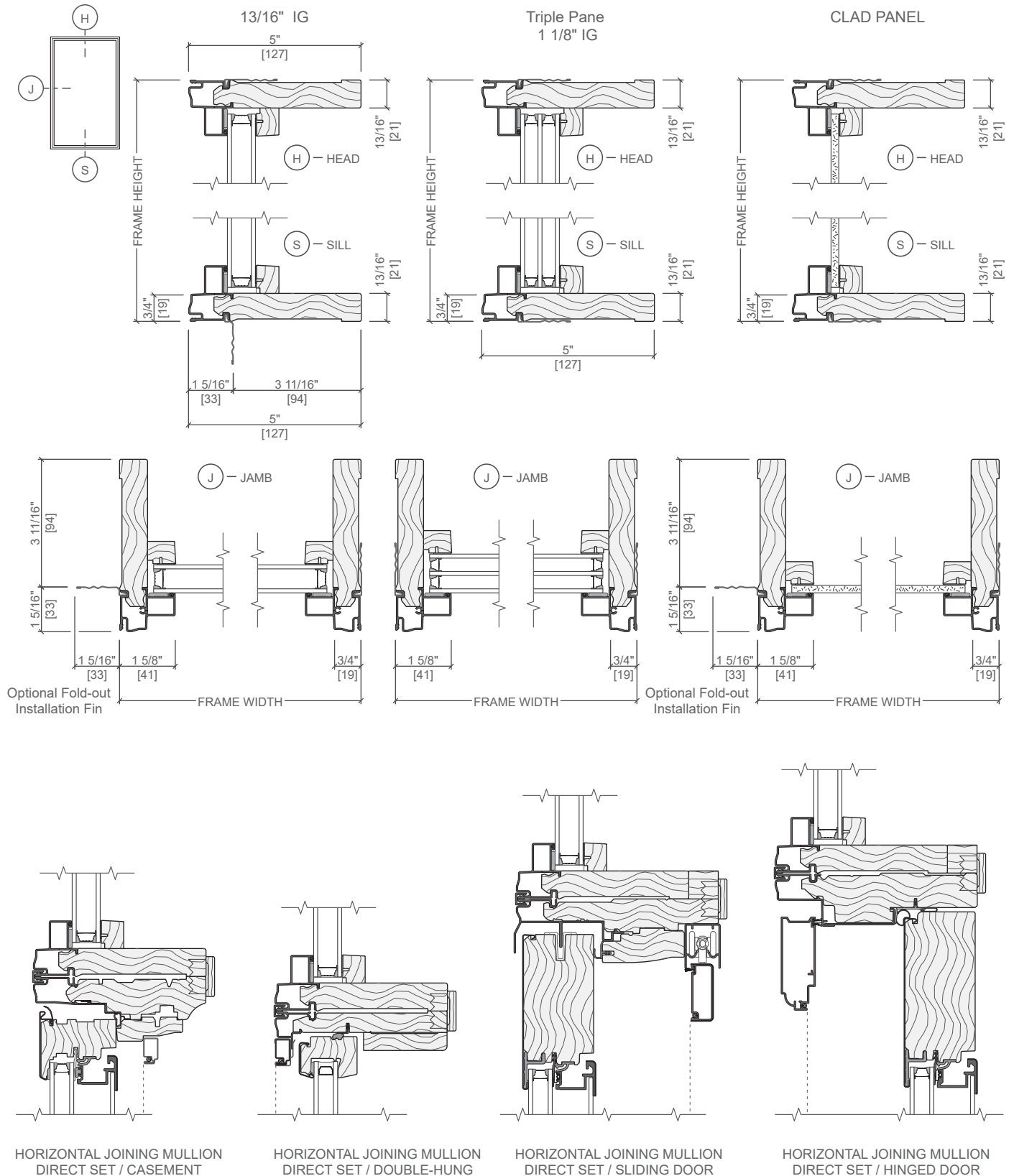




Clad-Wood Fixed Frame Direct Set Windows

Unit Sections - Interior Glazed Rectangular and Angled Shapes



Scale 3" = 1' 0"

All dimensions are approximate.

See www.PellaADM.com for mullion limitations and reinforcing requirements.

Rev. 08/30/21

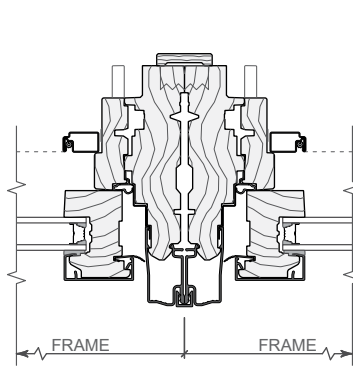
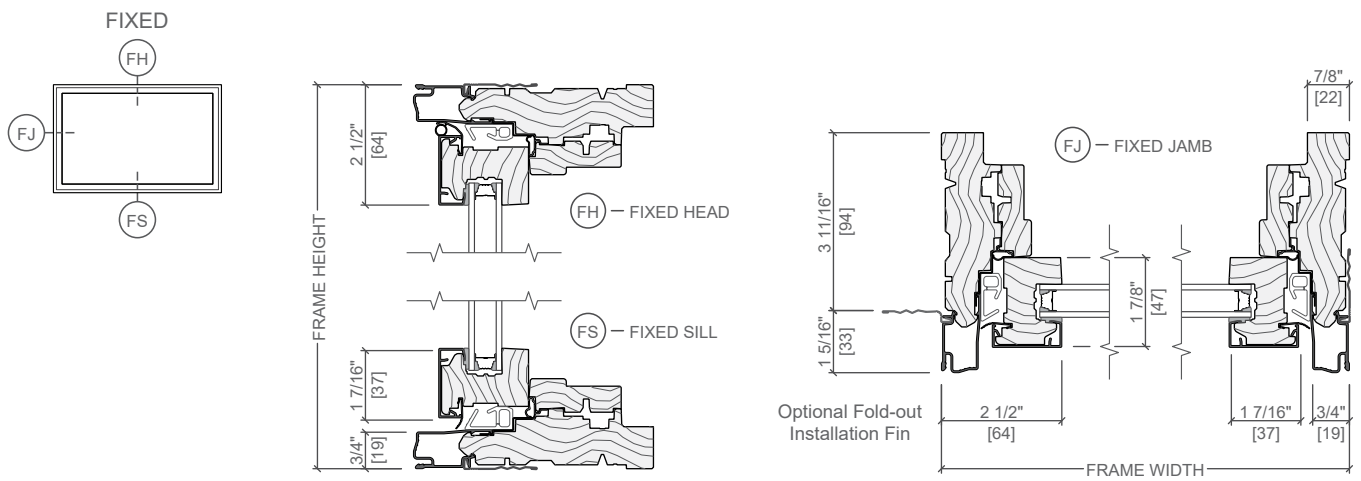
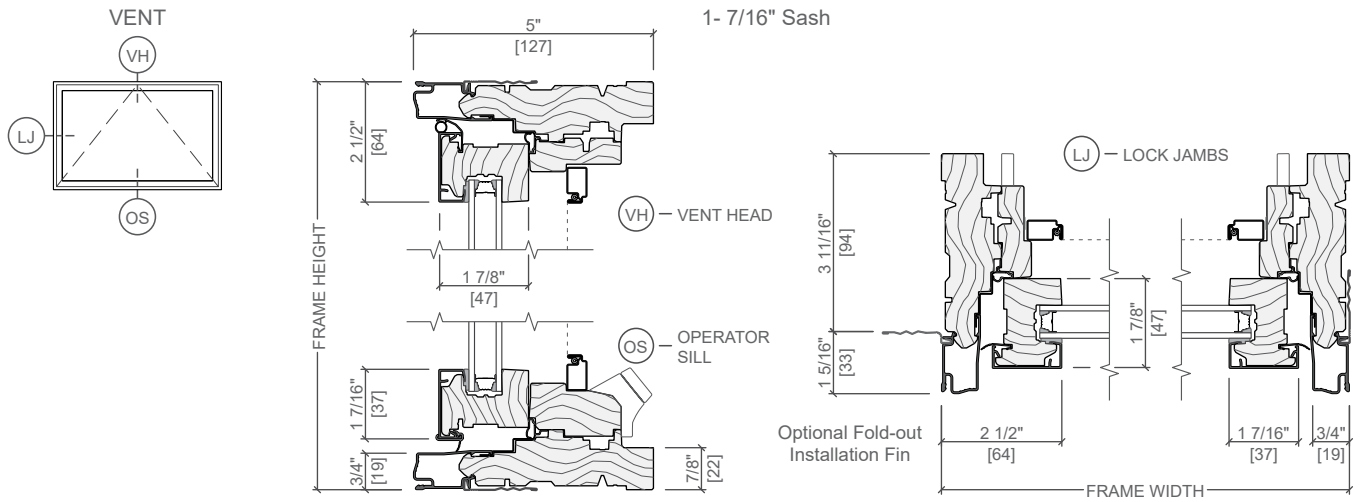
Pella 2022 Architectural Design Manual | Division 08 - Openings | Windows and Doors | www.Pella.com

W-FW-25

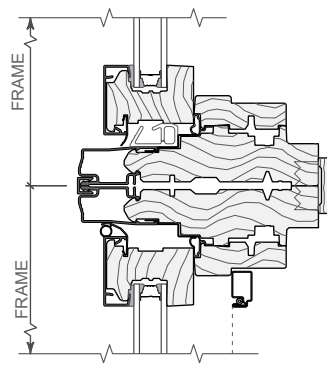


Pella® Reserve™ Contemporary Awning Window

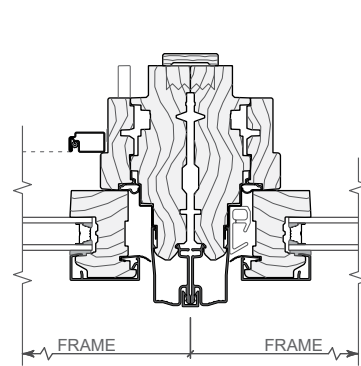
Unit Sections - Aluminum-Clad Exterior



VERTICAL JOINING MULLION
VENT / VENT



HORIZONTAL JOINING MULLION
TRANSOM / VENT



VERTICAL JOINING MULLION
VENT / FIXED

Scale 3" = 1' 0"

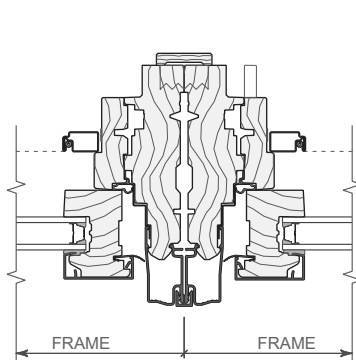
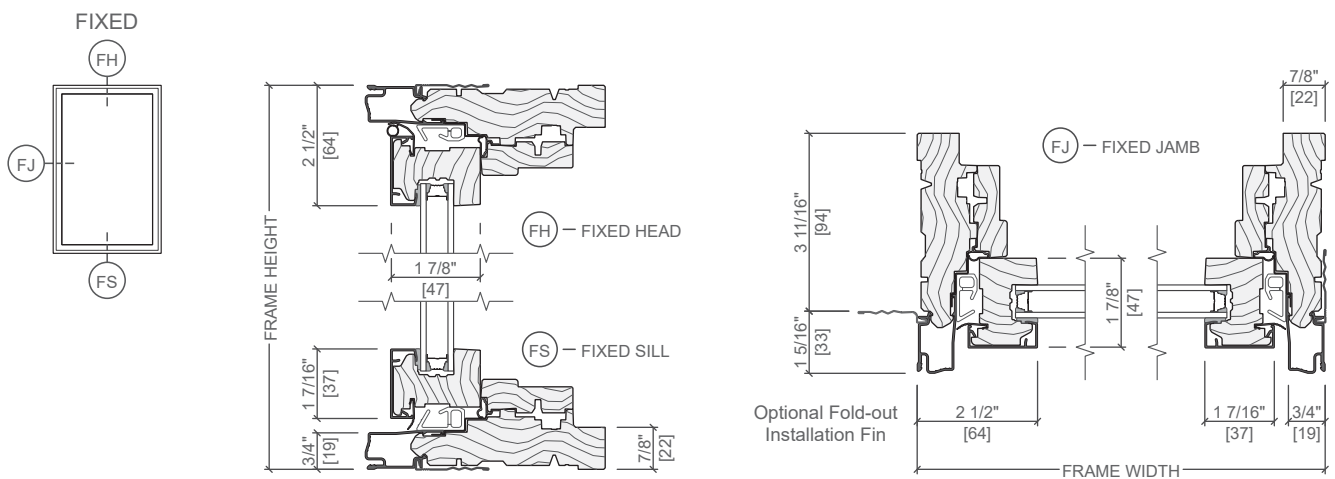
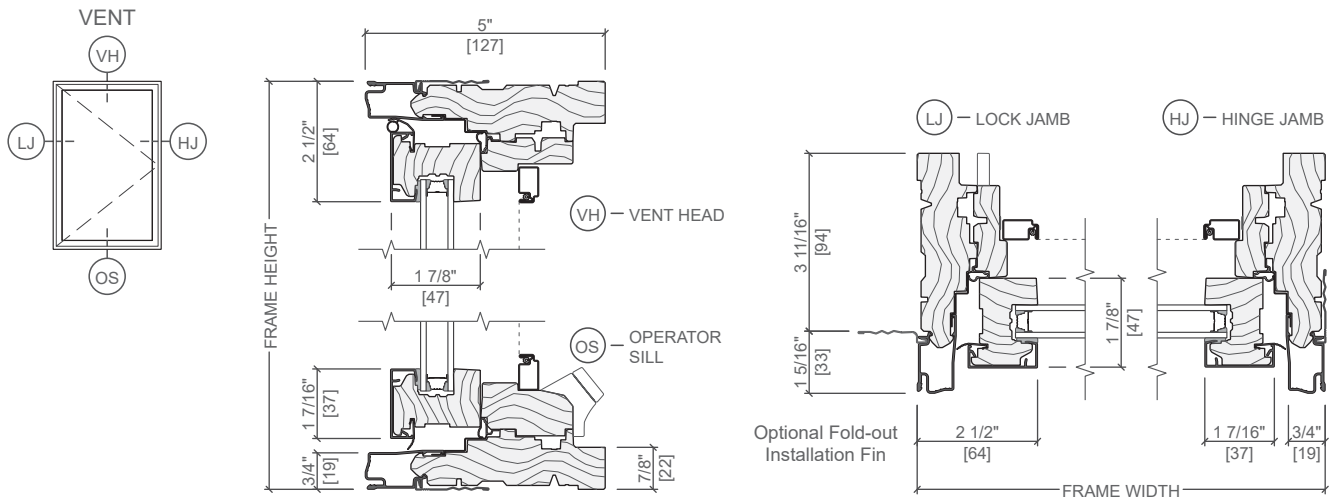
All dimensions are approximate.

See supporting combinations documents for mullion limitations and reinforcing requirements.

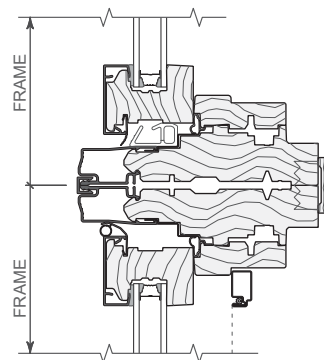


Pella® Reserve™ Contemporary Casement Window

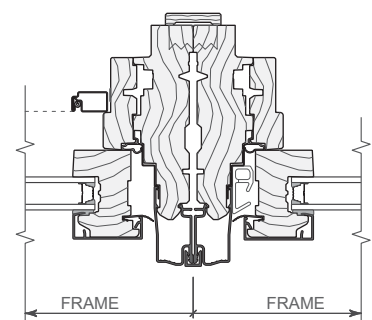
Unit Sections - Aluminum-Clad Exterior, 1-7/16" Sash



VERTICAL JOINING MULLION
VENT / VENT



HORIZONTAL JOINING MULLION
TRANSOM / VENT



VERTICAL JOINING MULLION
VENT / FIXED

Scale 3" = 1' 0"

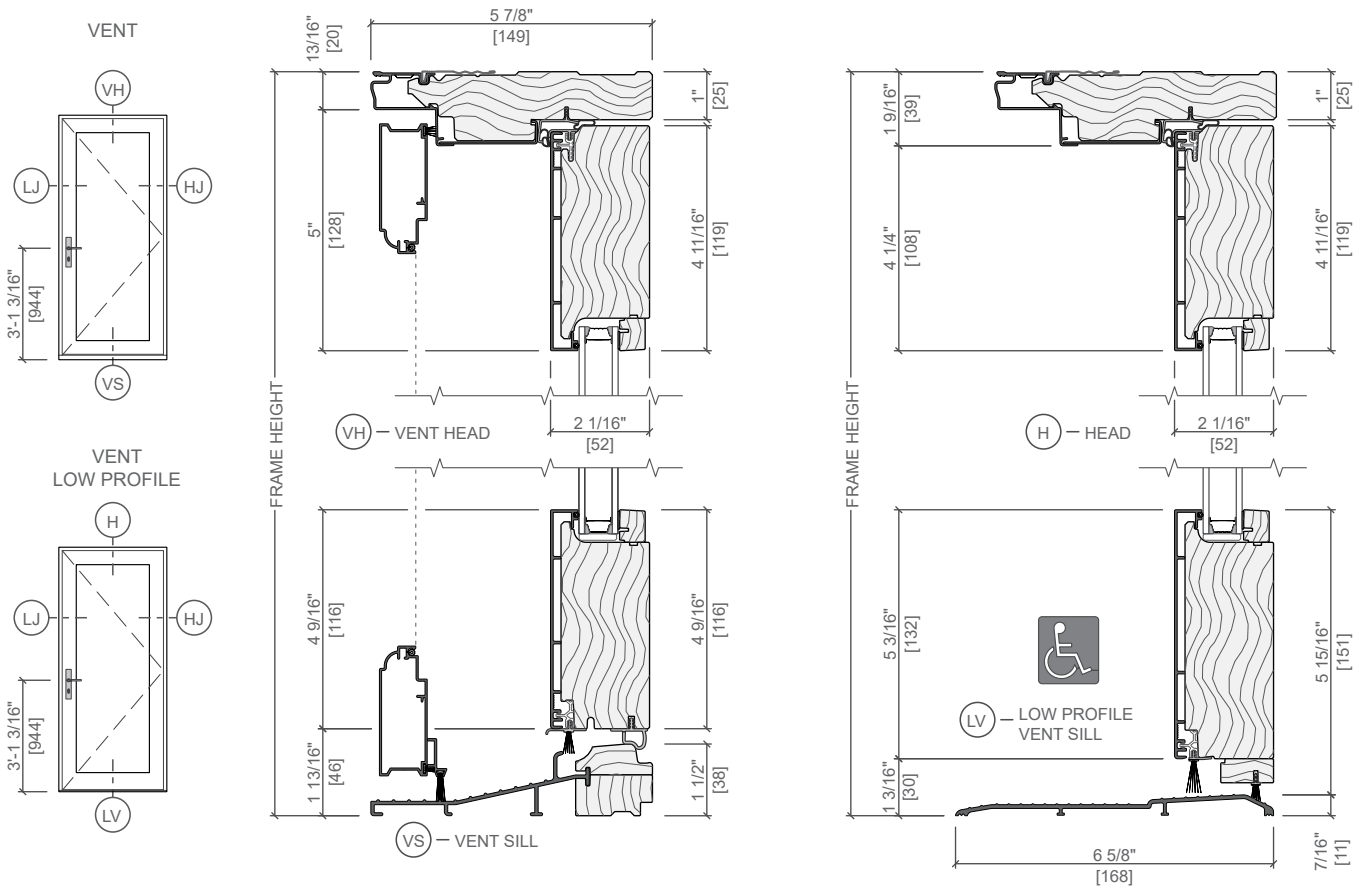
All dimensions are approximate.

See supporting combinations documents for mullion limitations and reinforcing requirements.

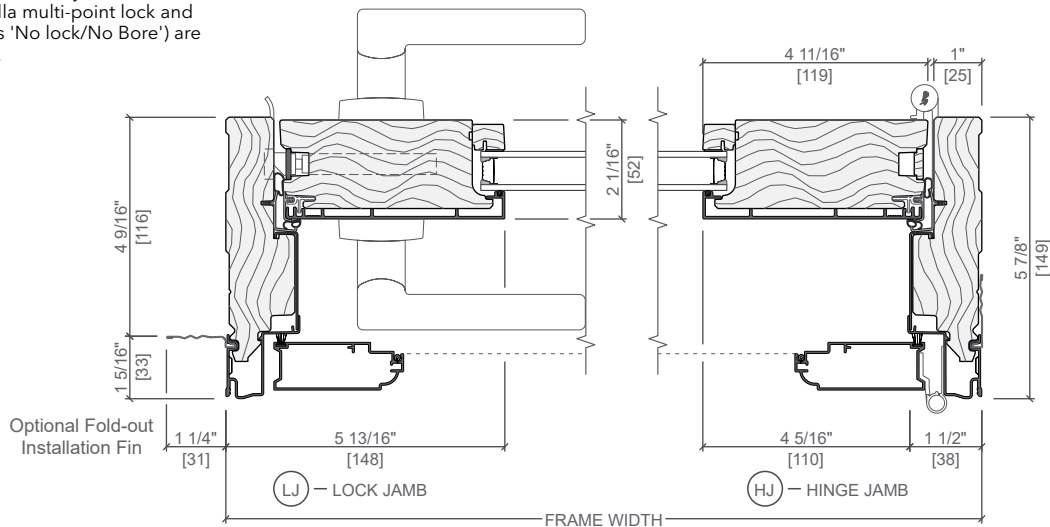


Pella® Architect Series® Contemporary In-Swing Door

Unit Sections



Handle Height Dimension shown is from bottom of unit frame to door handle. Installation method used and finished flooring conditions will cause handle height to vary. Doors not using the standard Pella multi-point lock and hardware (specified as 'No lock/No Bore') are not Hallmark certified.



Scale 3" = 1' 0"

All dimensions are approximate.

Water resistance is 0 psf for doors with low profile sill



REDEFINE BOUNDARIES AND PERFORMANCE WITH THERMALLY CONTROLLED LIFTSLIDE DOORS

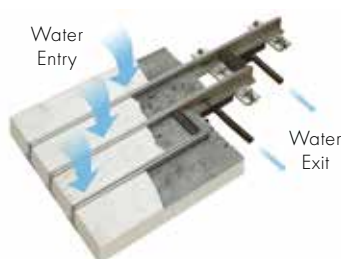
The Andersen® Liftslide door takes the indoor/outdoor lifestyle to the next level with the ultimate sliding glass wall system coupled with thermal performance to maximize energy efficiency goals.

KEY FEATURES

- Thermally controlled frame and panels to help prevent conductive thermal energy loss and increased condensation resistance
- Models available in Aluminum Wood-Clad (AWLS-C) and All Aluminum (ALS-C)
- Door panels feature a 3 1/2" profile design
- All standard Andersen glass options available including triple-pane and custom glass
- Heavy-duty aluminum framed bottom gliding insect screens available, 1 3/8" thick, 6' x 12' maximum panel size
- All units are installed in the factory before shipping to ensure precision in onsite unit assembly and operation

SILLS

- Patented, flush track with only 3/16" profile above the finished floor
- Hardened anodized aluminum track that has been tested for harsh weather environments
- Designed to accommodate variations in flooring materials and extreme weather conditions to further enhance the door system's weather resistance*



SIZES AND CONFIGURATIONS

- Custom and standard sizes available
- Rough openings up to 60' wide and 14' tall
- Configuration options include: One-directional and two-directional stacking, pocketing, pass-through or 90° corner

FINISH OPTIONS

Exterior Options:

- 50 standard color options, custom colors available
- Three anodized finishes are available for a rich, lustrous metallic appearance – clear, black and dark bronze**
- High-quality AAMA 2605 Kynar® finish is standard

Aluminum Wood-Clad Door Interior Options:

- Choose any wood species; common options include alder, mahogany,† pine and vertical grain Douglas fir
- All wood species are kiln dried and treated per WDMA I.S. 4 Industry Standard for Water-Repellent Preservative Treatment Program

* See your local code official for code requirements in your area.

** Anodized finishes have a unique patina as result of naturally forming aluminum oxide on a surface. The process makes each unit one of a kind and may appear to have an inconsistent color and/or finish.

† Actual wood species is either Sapele or Sipo, both non-endangered species grown in Africa, with color and characteristics similar to Central American mahoganies.

“Kynar” is a registered trademark of Arkema, Inc.

THERMALLY CONTROLLED LIFTSIDE DOORS

PERFORMANCE COMPARISON CHART

	Aluminum Wood-Clad (Pine)	Aluminum Wood-Clad Corner Unit (Pine)	All Aluminum	All Aluminum Corner Unit
MODEL	AWLS-C	AWLS-C	ALS-C	ALS-C
CONFIGURATION	PXXXX-O	OXX-XO (90° Corner Unit)	PXXXX-O	OXX-XO (90° Corner Unit)
PERFORMANCE RATING				
AAMA/WDMA/CSA 101/IS2/A440-08 AND -11	Class: LC PG30 Size Tested: 422" x 149"	Class: LC-PG40 Size Tested: 125.4"/121.4" x 118.5"	Class: LC PG30 Size Tested: 422" x 149"	Class: LC-PG40 Size Tested: 125.4"/121.4" x 118.5"
DESIGN PRESSURE (DP)	+30/-30	+40/-40	+30/-30	+40/-40
AIR INFILTRATION (CFM/FT ²)	0.09	0.19	0.09	0.19
WATER TEST PRESSURE (PSF)	7.52	7.52	7.52	7.52
NFRC RATINGS (U-FACTOR/SHGC)				
LOW-E SMARTSUN™ DUAL-PANE (Argon gas blend, 1")	0.32/0.20	0.32/0.20	0.38/0.20	0.38/0.20
LOW-E SMARTSUN DUAL-PANE WITH HEATLOCK® TECHNOLOGY (Argon gas blend, 1")	0.28/0.20	0.28/0.20	0.35/0.20	0.35/0.20
LOW-E SMARTSUN TRIPLE-PANE (Argon gas blend, 1 5/16")	0.25/0.16	0.25/0.16	0.30/0.16	0.30/0.16
LOW-E SMARTSUN TRIPLE-PANE WITH HEATLOCK TECHNOLOGY (Argon gas blend, 1 5/16")	0.23/0.15	0.23/0.15	0.29/0.16	0.29/0.16

*Hallmark Rated max panel size: 6' x 12'

**Hallmark Rated max panel size: 5' x 10'

- Performance Grade (PG) ratings may vary from tested performance rating for larger or smaller units of a particular type. Some units may not be rated.
- This data is accurate as of September 2020. Due to ongoing product changes, updated test results or new industry standards, this data may change over time.
- Where designated, Andersen® products are certified and labeled to the requirements of the Hallmark Certification Program. Actual performance may vary based on variations in manufacturing, shipping, installation, environmental conditions and conditions of use.
- Contact your Andersen supplier for more information.
- Values are for interior stacking doors. Contact your Andersen supplier for availability of exterior stacking door values.
- This data is accurate as of September 2020. Due to ongoing product changes, updated test results or new industry standards or requirements, this data may change over time. Ratings are for sizes specified by NFRC for testing and certification. Ratings may vary depending on used of tempered glass, different grill options, glass with capillary breather tubes for high altitudes, etc.

HARDWARE

ROLLERS

- Roller system of European design
- Handles are used to lift the door panel, engaging the wheels and allowing it to roll smoothly and almost effortlessly along the flush track
- When lowered, the weight of the door, special gasketing and a multi-point locking system provide excellent weather resistance and enhanced security



HANDLE STYLES

Florence
Permanent or Removable



Satin Silver
Rustic Umber
Matte Black

Oslo
Permanent or Removable



Satin Silver
Rustic Umber
Matte Black

Telluride*
Flush Mount



Medium Bronze
Dark Bronze
Oil Rubbed Bronze
Brushed White
Bronze
Rustic White
Bronze

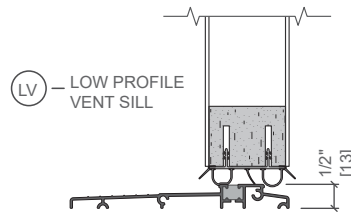
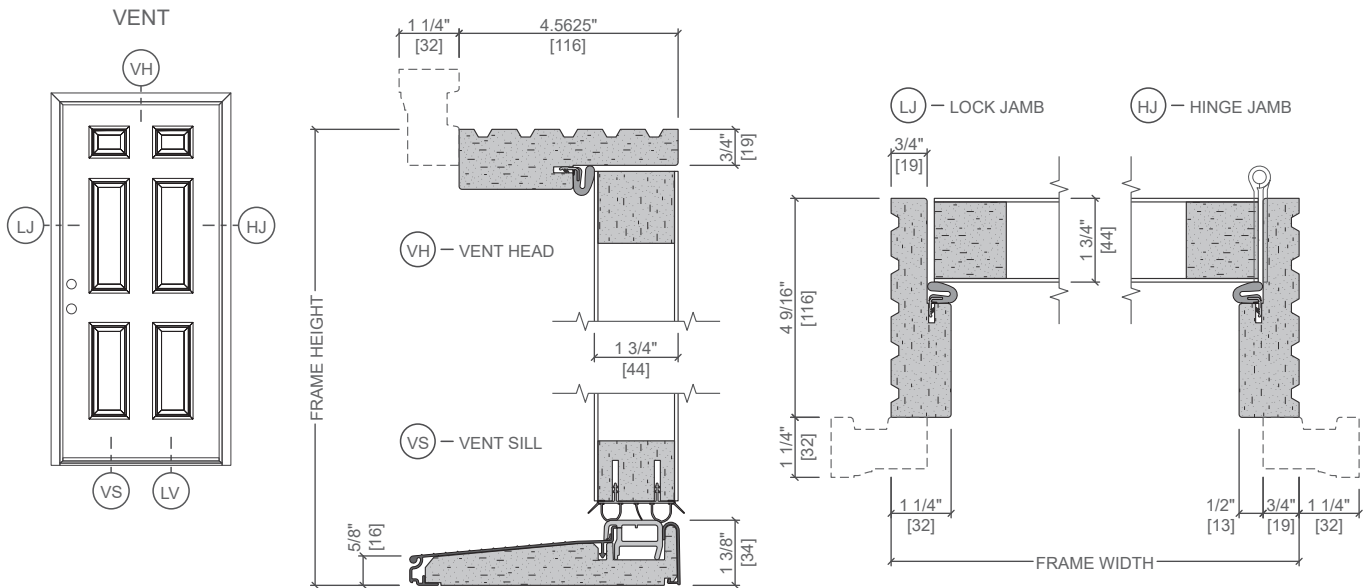


For more information, visit andersenwindows.com/bigdoors

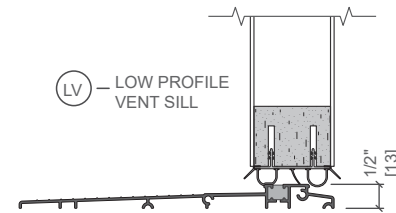
*Not recommended for commercial options.

Oil rubbed bronze is a "living" finish that change with time and use.

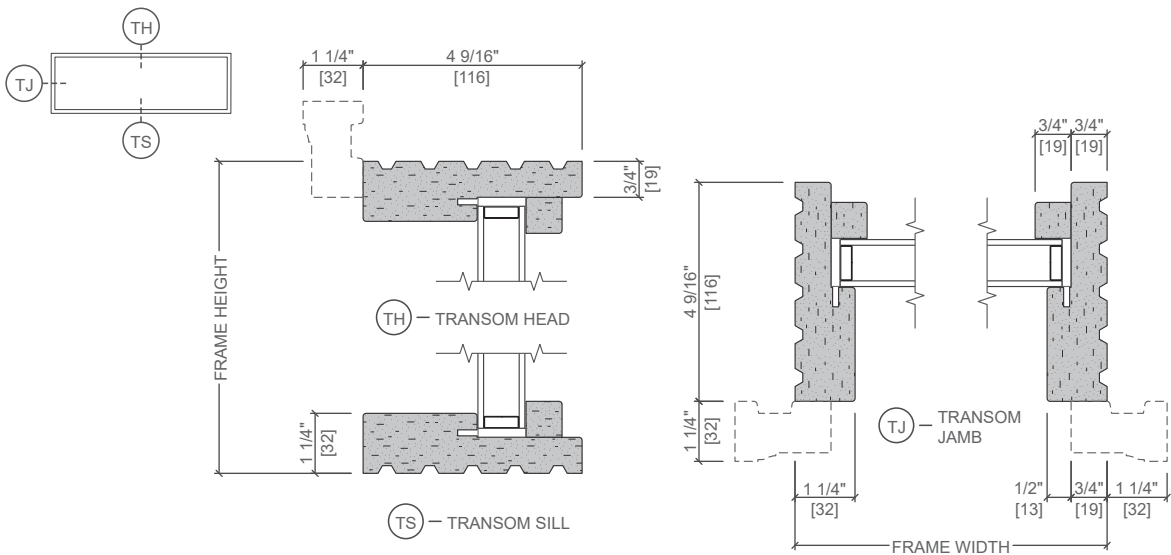
All marks where denoted are trademarks of Andersen Corporation and its subsidiary.
©2020 Andersen Corporation. All rights reserved. 09/20



4 9/16" Frame



6 9/16" Frame



Scale 3" = 1' 0"

All dimensions are approximate. Water resistance is 0 psf for doors with low profile sill

Square LED Outdoor Wall Sconce

By Modern Forms



Call Us (877) 445-4486

Square LED Outdoor Wall Sconce
By Modern Forms

Product Options

Finish: Black,
Size: Small

Details

Does not need a transformer or driver
Electronic low voltage (ELV) Wall Full Range Dimmer

Dimensions

Small Option Fixture: Width 8", Height 8", Depth 2.5",
Weight 3.5Lbs

Lighting

Small

Lamp Type	LED Built-in
Total Lumens	398
Total Watts	9.00
Volts	120
Color Temp	3000 (Soft White)
Average Lifespan (Hours)	50,000
CRI	90
Equivalent Halogen, CFL or LED Bulb Can Be Used	No

Additional Details

Product URL:
<https://www.lumens.com/square-led-outdoor-wall-sconce-by-modern-forms-MFM1864308.html>
Rating: ETL Listed Wet

ITEM#: MFM1864308

Notes:

Prepared
by:

Prepared for:
Project:
Room:
Placement:
Approval:



Balance LED Single Path Light

By WAC Lighting



Call Us (877) 445-4486

Balance LED Single Path Light
By WAC Lighting

Product Options

Finish: Bronze,
Color Temperature: 2700

Details

Protected against powerful water jets
Factory sealed water tight fixtures
Recommended spacing for installation: Residential: 11 to 13ft;
Commercial: 7 to 9ft
Mounting stake, 6 foot lead wire, and direct burial gel filled wire
nuts included
Works with your existing low voltage landscape system,
transformer required
Rated for 60,000 hours of life
May be used with existing low-voltage landscape systems
Designed in 2017
Material: Die-Cast Aluminum
ADA compliant
UL Listed Wet
Warranty: 5 Years Functional, 2 Years Finish
Made In China

Notes:

Prepared
by:

Prepared for:
Project:
Room:
Placement:
Approval:

Dimensions

Fixture: Length 6.5", Width 1", Height 23.5"

Lighting

2700

Lamp Type	LED Built-in
Total Lumens	275
Total Watts	6.50
Volts	12
Color Temp	2700 (Warm)
CRI	90
Equivalent Halogen, CFL or LED Bulb Can Be Used	No

Additional Details

Product URL:
<https://www.lumens.com/balance-led-single-path-light-by-wac-lighting-WAC714434.html>
Rating: UL Listed Wet

ITEM#: WAC714434

Ion LED 2in Square Recessed Light

By WAC Lighting



Call Us (877) 445-4486

Ion LED 2in Square Recessed Light
By WAC Lighting

Product Options

Housing Type: New Construction - IC

Details

The New Construction Option Includes a Frame-in Bracket for Installation.
Designed in 2020
Finish: White
Material: Aluminum / Steel
Trim Type: Reflector
Size: 2 Inches
Dimmable when used with a ELV or TRIAC Dimmer (Not Included)
Dimmer Range: 100-5%
Title 24 compliant
Energy Star Qualified
Integral Transformer
Installation Type: Hardwired
ETL Listed Wet
Warranty: 5 Years Functional, 2 Years Finish
Made In China

Notes:

Prepared
by:

Prepared for:
Project:
Room:
Placement:
Approval:

Dimensions

New Construction - IC Option Fixture: Width 3.5",
Height 3.8", Diameter
New Construction - IC Option Opening: Diameter 2"

Lighting

Lamp Type	LED Built-in
Total Lumens	735
Total Watts	9.00
Volts	120/240/277
Color Temp	3000 (Soft White)
Average Lifespan (Hours)	50,000
CRI	90
Equivalent Halogen, CFL or LED Bulb Can Be Used	No

Additional Details

Product URL:
<https://www.lumens.com/ion-led-2in-square-recessed-light-by-wac-lighting-WAC2000680.html>
Rating: ETL Listed Wet