



LOT 2
NORTH ELEVATION
SCALE: 1/4" = 1'-0"

ENGINEERING #	
223043	
DRAWN BY: CHECKED BY:	
MRF	XX
DATE:	
4-27-23	
SALESMAN:	
PETE RUMENSKY	
MODEL:	
TWO STORY	
BY:	REASON FOR REVISION:
MJC	CHANGES PER DRAWING REQUEST
RK	REVISIONS PER REQUEST
1	5-2-23
2	5-11-23
3	
4	
5	
6	
7	
8	

SIGNATURE
— BUILDING SYSTEMS —

BUILDER:
OPTIMUS CONSTRUCTION & DEV
10 COUNTY CENTER ROAD, SUITE 330
WHITE PLAINS, NY

RETAIL:
SPEC-1YMAN 2
11 LYMAN PLACE
DOBBS FERRY, NY 10522
WESTCHESTER COUNTY

DRAWING:	
FRONT ELEVATION	
SCALE:	
NTS	
SHEET:	
1a	



LOT 2
SOUTH ELEVATION
SCALE: 1/4" = 1'-0"

ENGINEERING #

223043

DRAWN BY: CHECKED BY:

MRF

XX

DATE:

4-27-23

SALESMAN:

PETE RUMENSKY

MODEL:

TWO STORY

REVISION	DATE	REASON FOR REVISION:	
		BY:	MJC
1	5-2-23	CHANGES PER DRAWING REQUEST	RK
2	5-11-23	REVISIONS PER REQUEST	
3			
4			
5			
6			
7			
8			

SIGNATURE
— BUILDING SYSTEMS —

BUILDER:	OPTIMUS CONSTRUCTION & DEV
	10 COUNTY CENTER ROAD, SUITE 330 WHITE PLAINS, NY
RETAIL:	SPEC-1 YMAN 2
	11 LYMAN PLACE DOBBS FERRY, NY 10522 WESTCHESTER COUNTY

DRAWING:

REAR ELEVATION

SCALE:

NTS

SHEET:

1b



LOT 2
EAST ELEVATION
SCALE: 1/4" = 1'-0"

ENGINEERING #				223043			
DRAWN BY:				CHECKED BY:			
MRF				XX			
DATE:				4-27-23			
SALESMAN:				PETE RUMENSKY			
MODEL:				TWO STORY			
REVISIONS				BY:	MJC		
				REASON FOR REVISION:	CHANGES PER DRAWING REQUEST		
				REVISIONS PER REQUEST	5-11-23		
				REVISION:	DATE:		
				1	5-2-23		
				2	5-11-23		
				3			
				4			
				5			
				6			
7							
8							
<div><div></div><div>SIGNATURE</div><div>— BUILDING SYSTEMS —</div></div>							
BUILDER:				OPTIMUS CONSTRUCTION & DEV 10 COUNTY CENTER ROAD, SUITE 330 WHITE PLAINS, NY			
RETAIL:				SPEC-LYMAN 2 11 LYMAN PLACE DOBBS FERRY, NY 10522 WESTCHESTER COUNTY			
DRAWING:							
ELEVATION							
SCALE:				NTS			
SHEET:							
1c							



LOT 1
WEST ELEVATION

SCALE: 1/4" = 1'-0"

ENGINEERING #

223043

DRAWN BY: CHECKED BY:

MRF XX

DATE:

4-27-23

SALESMAN:

PETE RUMENSKY

MODEL:

TWO STORY

REVISIONS		BY:	DATE:	REASON FOR REVISION:
1	5-2-23	MJC	5-2-23	CHANGES PER DRAWING REQUEST
2	5-11-23	RK	5-11-23	REVISIONS PER REQUEST
3				
4				
5				
6				
7				
8				

SIGNATURE
— BUILDING SYSTEMS —

BUILDER:	OPTIMUS CONSTRUCTION & DEV
	10 COUNTY CENTER ROAD SUITE 330 WHITE PLAINS NY
RETAIL:	SPEC-1YMAN 2
	11 LYMAN PLACE DOBBS FERRY NY 10522 WEST CHESTER COUNTY

DRAWING:

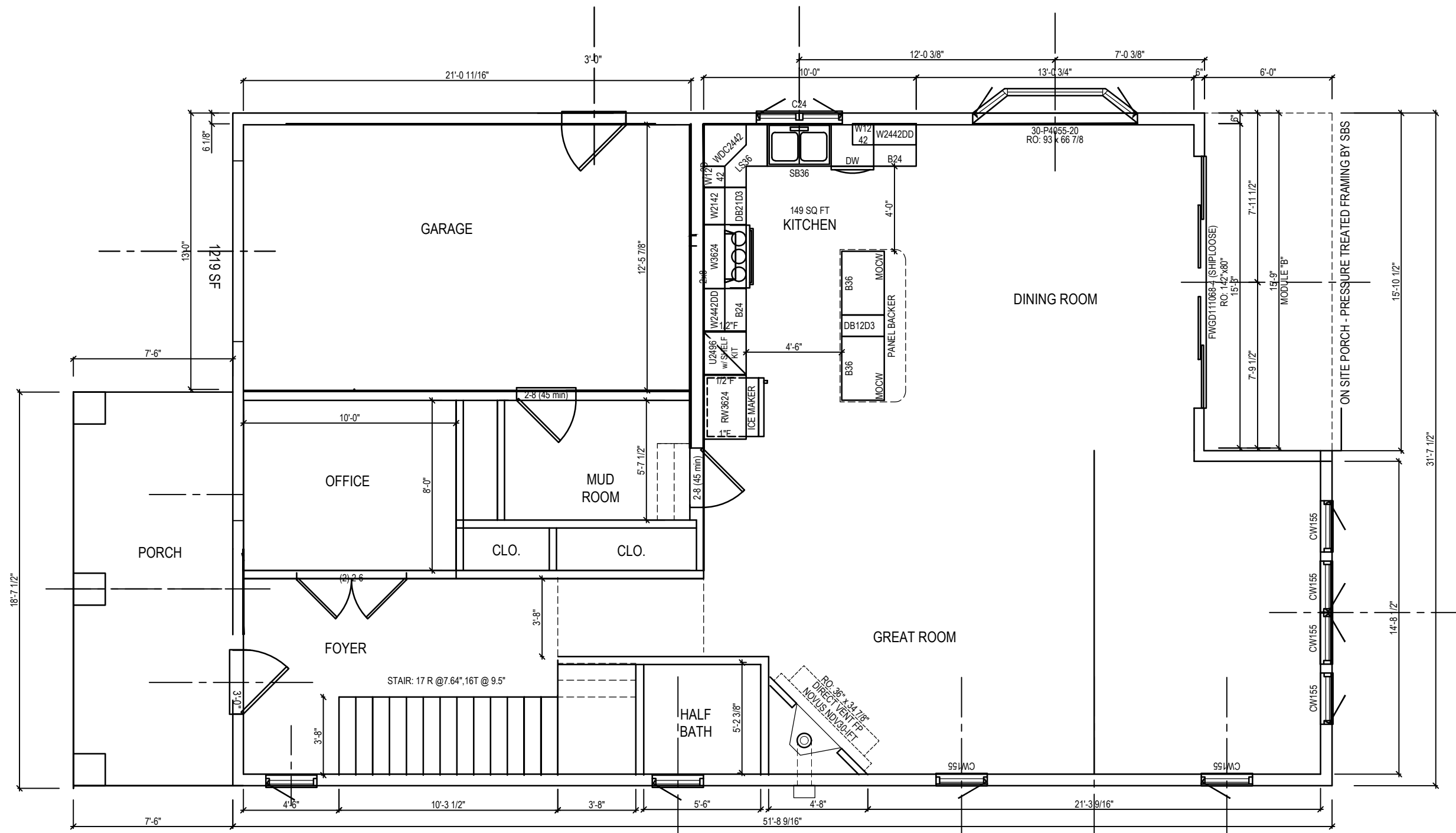
ELEVATIONS

SCALE:

NTS

SHEET:

1d



LOT 2
FIRST FLOOR PLAN

SCALE: 3/16" = 1'-0"

FLOOR AREAS	
FIRST FLOOR:	1,260 SF
SECOND FLOOR:	1,440 SF
TOTAL	2,710 SF

ENGINEERING #

223043

DRAWN BY: CHECKED BY:

MRF XX

DATE:

4-27-23

SALESMAN:

PETE RUMENSKY

MODEL:

TWO STORY

REVISIONS		BY:	DATE:	REASON FOR REVISION:
1	5-2-23	MJC	5-2-23	CHANGES PER DRAWING REQUEST
2	5-11-23	RK	5-11-23	REVISIONS PER REQUEST
3				
4				
5				
6				
7				
8				

SIGNATURE
— BUILDING SYSTEMS —

BUILDER:	OPTIMUS CONSTRUCTION & DEV
	10 COUNTY CENTER ROAD, SUITE 330 WHITE PLAINS, NY
RETAIL:	SPEC-LYMAN 2
	11 LYMAN PLACE DOBBS FERRY, NY 10522 WESTCHESTER COUNTY

DRAWING:

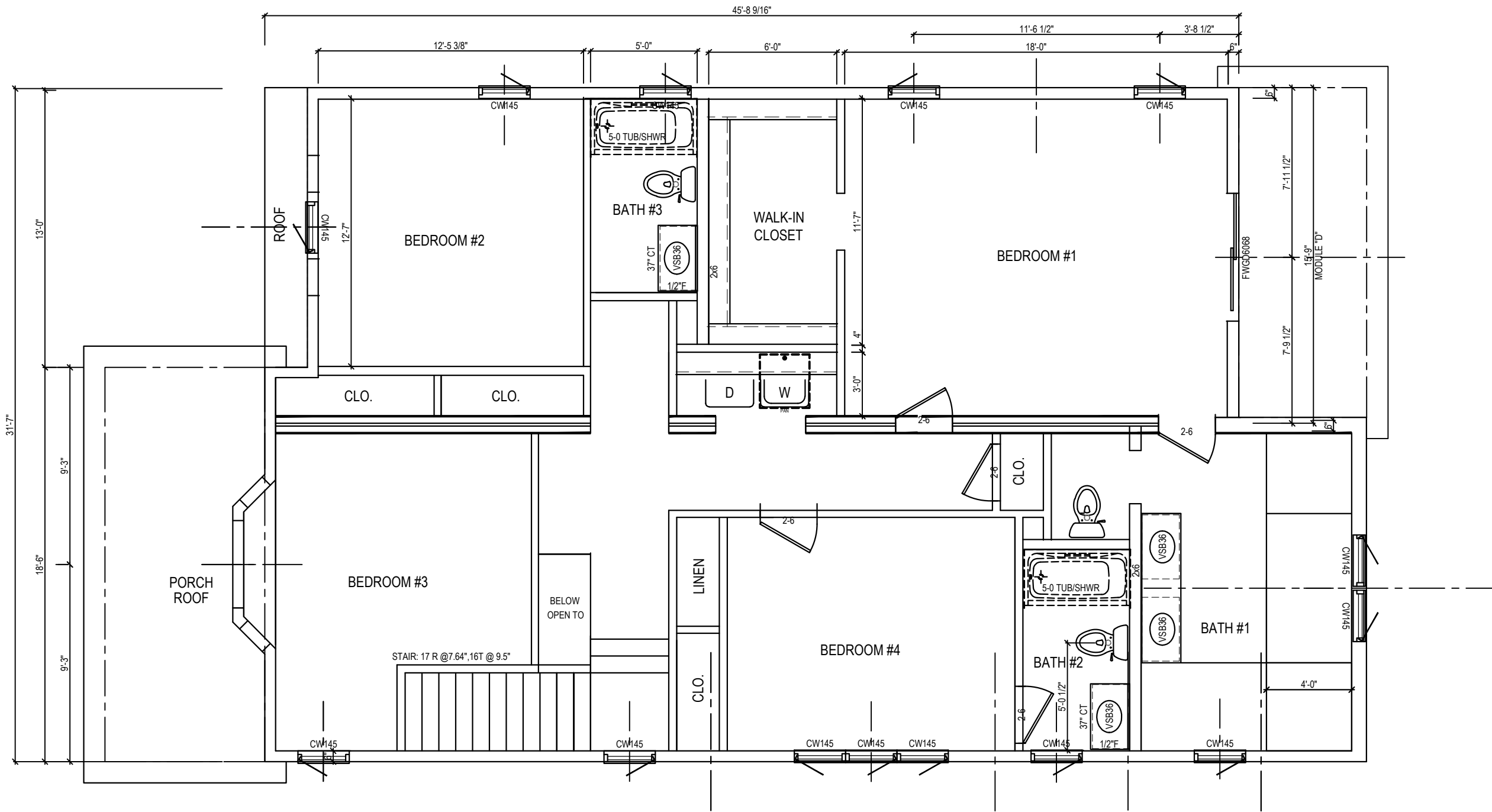
1ST FLOOR PLAN

SCALE:

NTS

SHEET:

2a



LOT 2
SECOND FLOOR PLAN

SCALE: 3/16" = 1'-0"

ENGINEERING #

223043

DRAWN BY: CHECKED BY:

MRF XX

DATE:

4-27-23

SALESMAN:

PETE RUMENSKY

MODEL:

TWO STORY

REVISION	DATE	REASON FOR REVISION:	
		BY:	M/C
1	5-2-23	CHANGES PER DRAWING REQUEST	RK
2	5-11-23	REVISIONS PER REQUEST	
3			
4			
5			
6			
7			
8			

SIGNATURE
— BUILDING SYSTEMS —

BUILDER:	OPTIMUS CONSTRUCTION & DEV	
	10 COUNTY CENTER ROAD SUITE 330	
RETAIL:	WHITE PLAINS NY	
	SPEC-LYMAN 2	
	11 LYMAN PLACE	
	DOBBS FERRY, NY, 10522	
	WESTCHESTER COUNTY	

DRAWING:

2ND FLOOR PLAN

SCALE:

NTS

SHEET:

2b