



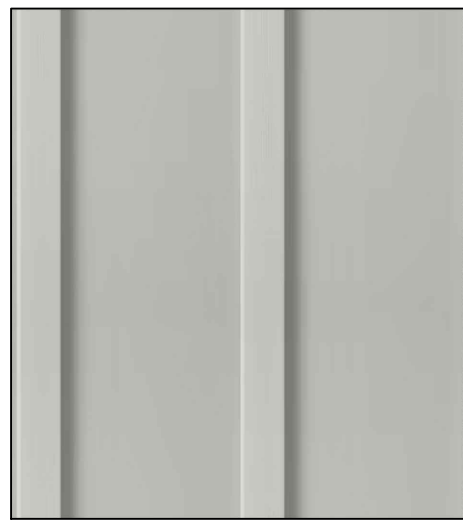
LOT NO. 2



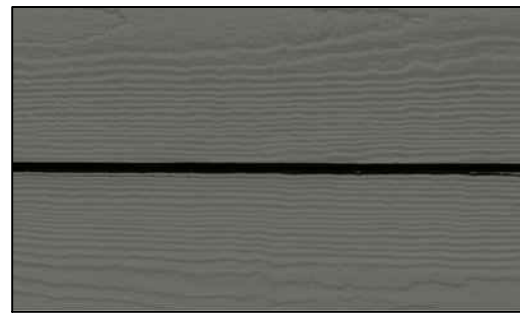
LOT NO.1

COLOR & MATERIAL SCHEME OF STREET ELEVATION

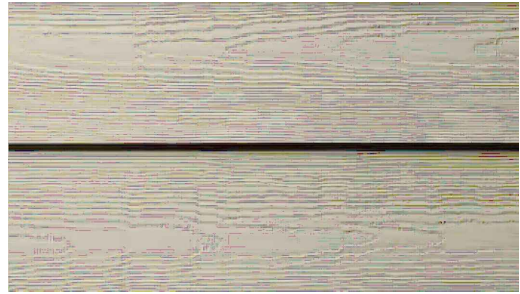
SCALE: 1/4" = 1'-0"



1.HARDIE PANEL VERTICAL CEMENTITIOUS SIDING, ARTIC WHITE



2. HARDIE PLANK LAP SIDING,SMOOTH FINISH, AGED PEWTER



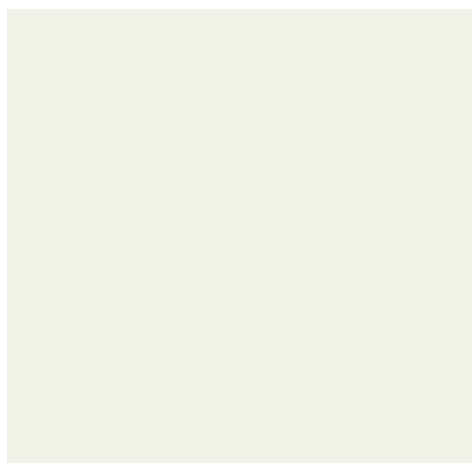
3.HARDIE PLANK LAP SIDING, SMOOTH FINISH, MONTEREY TAUPE



4. HARDIE PLANK SHINGLE SIDING, MONTEREY TAUPE



5. AZEK TRIM PAINT FINISH, BEN. MOORE PURE WHITE



6. AZEK TRIM PAINT FINISH, BEN. MOORE DOVE WHITE



7. 30-YEAR ARCHITECTURAL SHINGLES BY CERTANTEED, LANDMARK SERIES, GEORGETOWN GREY



8. 30-YEAR ARCHITECTURAL SHINGLES BY CERTANTEED, LANDMARK SERIES, COLONIAL SLATE



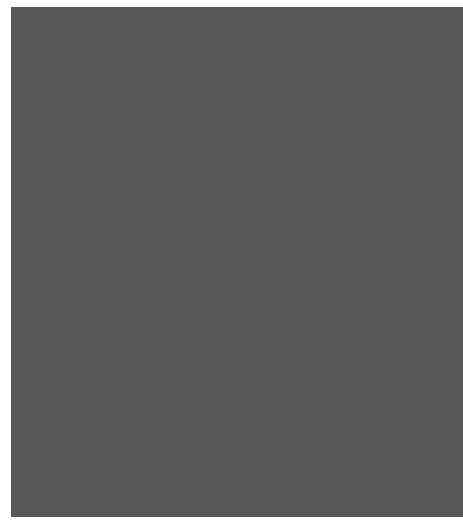
9. STANDING SEAM METAL ROOFING WITH FACTORY PAINTED BLACK FINISH



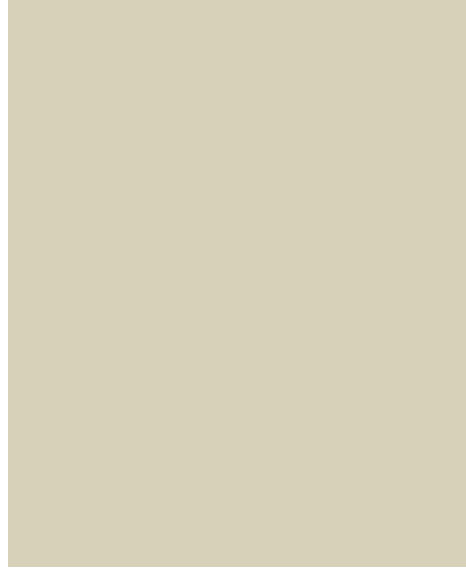
10. 3-COAT CEMENT STUCCO AT STAIR RISERS, FINE FINISH, COLOR MATCH TO BEN. MOORE CHELSEA GRAY#CW-695



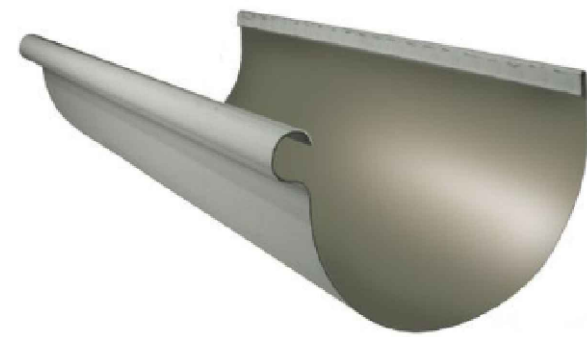
11. BLUESTONE AT STAIR TREADS, PORCH FLOOR AND PATIO



12.AZEK GARAGE DOOR PAINT FINISH. BEN. MOORE DARK GREY



13.AZEK GARAGE DOOR PAINT FINISH. BEN. MOORE CLAY BEIGE



14. ALUMINUM HALF-ROUND GUTTER, COLOR-MATCHED TO BEN. MOORE CHELSEA GRAY # CW-695



15. EXTERIOR PENDANT PARKER FIXTURE OPAQUE WHITE GLASS



16. EXTERIOR WALL MTD. PARKER LT. FIXTURE



17. PATH LT. FIXTURE