



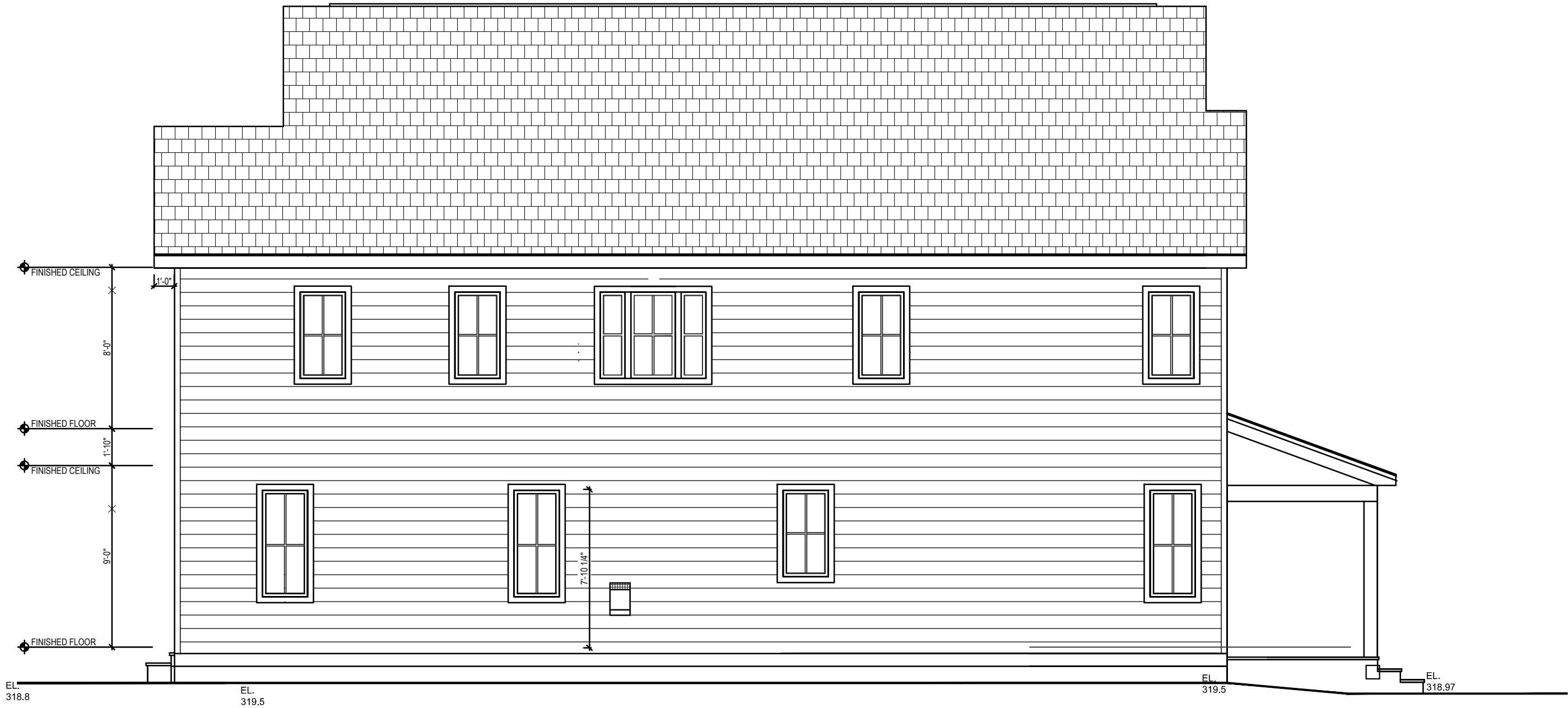
LOT 1
SOUTH ELEVATION
SCALE: 1/4" = 1'-0"

ENGINEERING #	
223043	
DRAWN BY: CHECKED BY:	
MRF	XX
DATE:	
4-27-23	
SALESMAN:	
PETE RUMENSKY	
MODEL:	
TWO STORY	
REVISIONS	BY:
	MJC
	RK
REVISION:	DATE:
1	5-2-23
2	5-11-23
3	
4	
5	
6	
7	
8	

SIGNATURE
— BUILDING SYSTEMS —

BUILDER:	OPTIMUS CONSTRUCTION & DEV
	10 COUNTY CENTER ROAD, SUITE 330 WHITE PLAINS, NY
RETAIL:	SPEC-LYMAN 2
	11 LYMAN PLACE DOBBS FERRY, NY 10522 WESTCHESTER COUNTY

DRAWING:
REAR ELEVATION
SCALE:
NTS
SHEET:
1b



LOT 1
EAST ELEVATION
SCALE: 1/4" = 1'-0"

ENGINEERING #
223043

DRAWN BY: MRF
CHECKED BY: XX

DATE:
4-27-23

SALESMAN:
PETE RUMENSKY

MODEL:
TWO STORY

REVISIONS	REASON FOR REVISION:
1	CHANGES PER DRAWING REQUEST
2	REVISIONS PER REQUEST
3	
4	
5	
6	
7	
8	

SIGNATURE

BUILDING SYSTEMS

BUILDER:

OPTIMUS CONSTRUCTION & DEV
10 COUNTY CENTER ROAD, SUITE 330
WHITE PLAINS, NY

RETAIL:

SPEC-1 YMAN 2
11 LYMAN PLACE
DOBBS FERRY, NY 10522
WESTCHESTER COUNTY

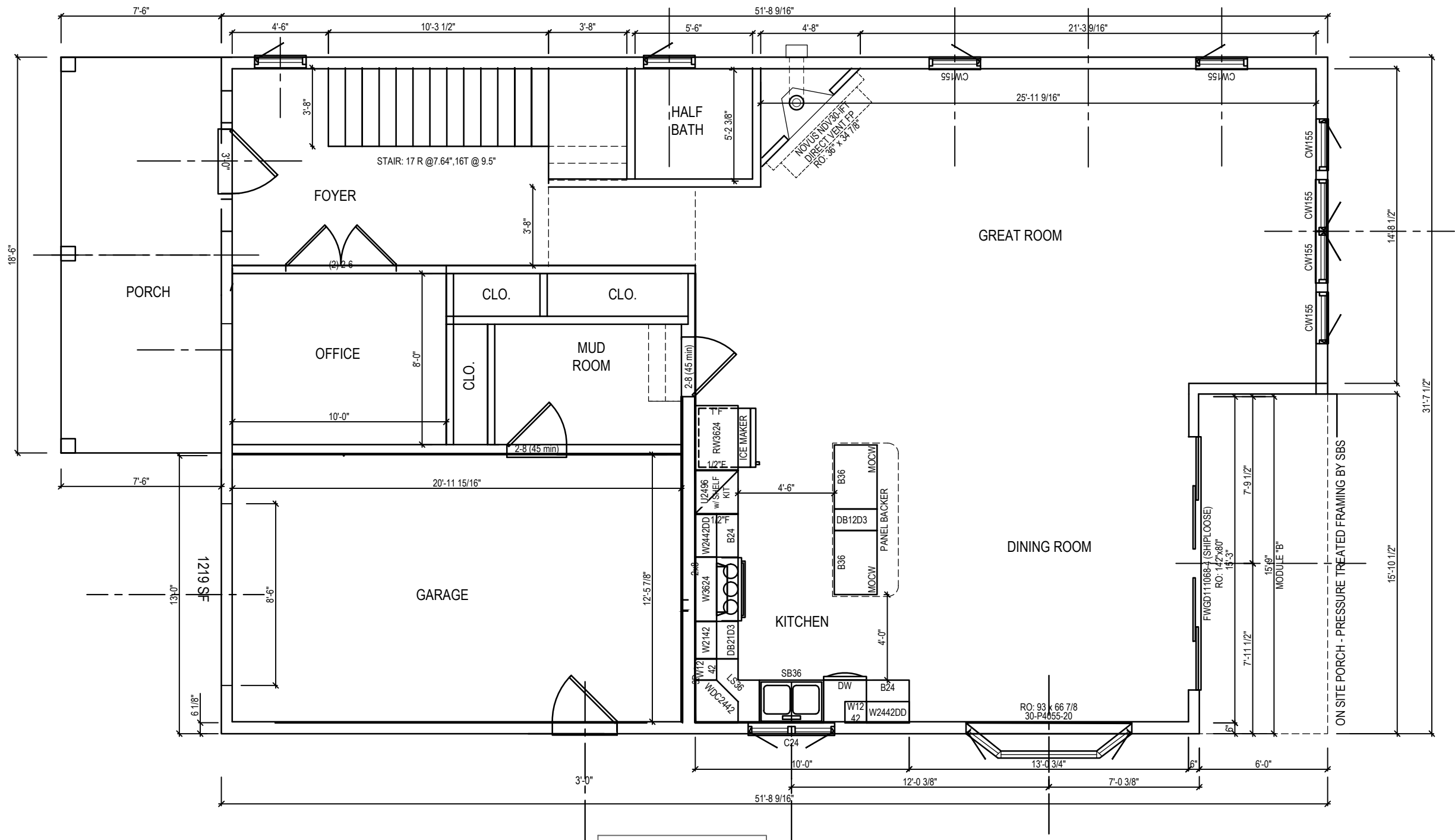
DRAWING:
ELEVATION

SCALE:
NTS

SHEET:
1c



DRAWING:
ELEVATIONS
SCALE:
NTS
SHEET:
1d



LOT 1
FIRST FLOOR PLAN

SCALE: 3/16" = 1'-0"

FLOOR AREAS	
FIRST FLOOR:	1,260 SF
SECOND FLOOR:	1,440 SF
TOTAL	2,710 SF

ENGINEERING #

223043

DRAWN BY: CHECKED BY:

MRF XX

DATE:

4-27-23

SALESMAN:

PETE RUMENSKY

MODEL:

TWO STORY

REVISIONS		REASON FOR REVISION:
REVISION:	DATE:	REASON FOR REVISION:
1	5-2-23	CHANGES PER DRAWING REQUEST
2	5-11-23	REVISIONS PER REQUEST
3		
4		
5		
6		
7		
8		

SIGNATURE
— BUILDING SYSTEMS —

BUILDER:	OPTIMUS CONSTRUCTION & DEV
	10 COUNTY CENTER ROAD, SUITE 330 WHITE PLAINS, NY
RETAIL:	SPEC-LYMAN 2
	11 LYMAN PLACE DOBBS FERRY, NY 10522 WESTCHESTER COUNTY

DRAWING:

1ST FLOOR PLAN


SCALE:

NTS

SHEET:

2a



ENGINEERING #		
223043		
DRAWN BY:		CHECKED BY:
MRF		XX
DATE:		
4-27-23		
SALESMAN:		
PETE RUMENSKY		
MODEL:		
TWO STORY		
REVISIONS		
REVISION:	DATE:	REASON FOR REVISION:
1	5-2-23	CHANGES PER DRAWING REQUEST
2	5-11-23	REVISIONS PER REQUEST
3		
4		
5		
6		
7		
8		
<div></div>		
BUILDER: OPTIMUS CONSTRUCTION & DEV 10 COUNTY CENTER ROAD SUITE 330 WHITE PLAINS NY		
RETAIL: SPEC-LYMAN 2 11 LYMAN PLACE DOBBS FERRY, NY, 10522 WESTCHESTER COUNTY		
DRAWING:		
2ND FLOOR PLAN		
SCALE:		
NTS		
SHEET:		
2b		