

WALLACE
HOUSE21 Hollywood Drive
Dobbs Ferry, NY 10522

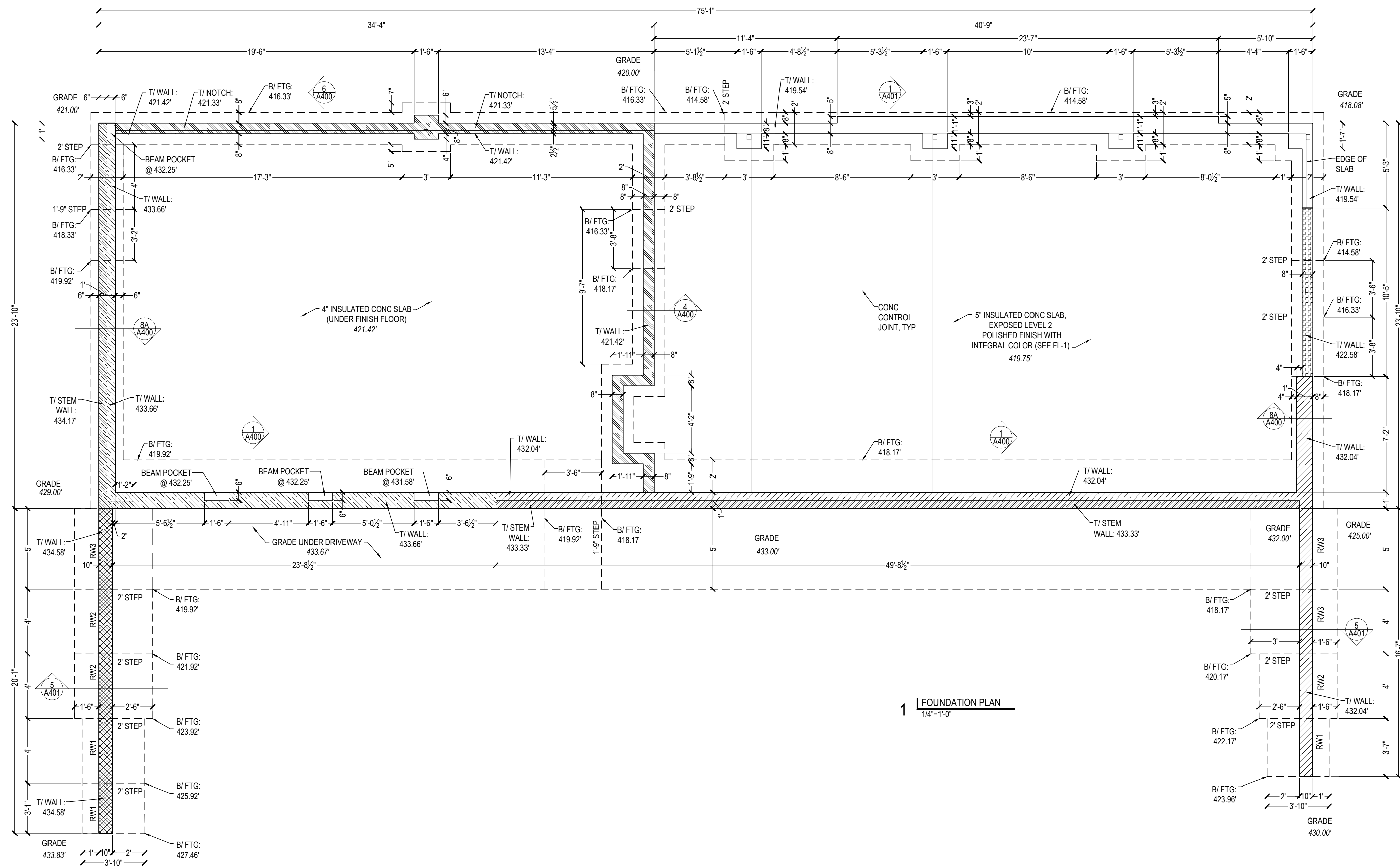
date	issue
2.17.23	DOB initial
6.8.23	BID SET

SEAL AND SIGNATURE

foundation
planNYC DOB #
A-103.00OF
plans_hollywood.dwg

FOUNDATION NOTES:

- A. PLAN NOTE ABBREVIATIONS : T/ = TOP OF; B/ = BOTTOM OF
- B. FOOTINGS ARE 24" WIDE x 12" DEEP, UNLESS OTHERWISE NOTED / DIMENSIONED ON FOUNDATION PLAN. SEE FOOTING DETAILS ON A-400 FOR REBAR. PROVIDE CORNER BARS AND DOWELS INTO ADJACENT FOOTINGS.
- C. REINFORCING BAR LAP SPLICE LENGTHS TO BE 25".
- D. TOP OF WALL ELEVATIONS REFER TO TOP OF CONCRETE AND VARY ALONG LENGTH OF WALL AS INDICATED ON FOUNDATION PLAN. SEE A-400 FOR NOTCHING, REINFORCING, AND WATERPROOFING NOTES.
- E. COORDINATE WITH PLUMBING DRAWINGS FOR UNDERGROUND PIPING AND EJECTOR PUMP LOCATIONS PRIOR TO POURING SLAB.
- F. PROVIDE INSULATION AND TILE DRAIN AROUND PERIMETER OF FOUNDATION. SEE DETAIL A-400.
- G. SOME SLABS TO BE FINISH FLOORS AS PER PLAN. THEY SHALL NOT HAVE EXCESSIVE WATER ADDED TO THE CONCRETE MIX IN ORDER TO PREVENT ACCELERATED EVAPORATION, SHRINKING AND CRACKING. KEEP MOIST AS THE CONCRETE CURES BY SPRAYING THE CONCRETE A FEW TIMES A DAY WITH WATER, USING MOISTURE RETAINING COVERINGS AND / OR A MOISTURE COMPOUND. PREPARE CONSISTENCY FOR FUTURE POLISHING AS PER FINISH PLAN. PROVIDE CONTROL JOINTS PER PLAN AFTER POUR AND FILL WITH A POLYUREA COMPOUND AFTER FINISHING.
- H. SEE GENERAL STRUCTURAL NOTES ON T-101 FOR ADDITIONAL NOTES ON SOIL PREPARATION, AND CONCRETE MIX AND INSTALLATION.



WALLACE
HOUSE

21 Hollywood Drive
Dobbs Ferry, NY 10522

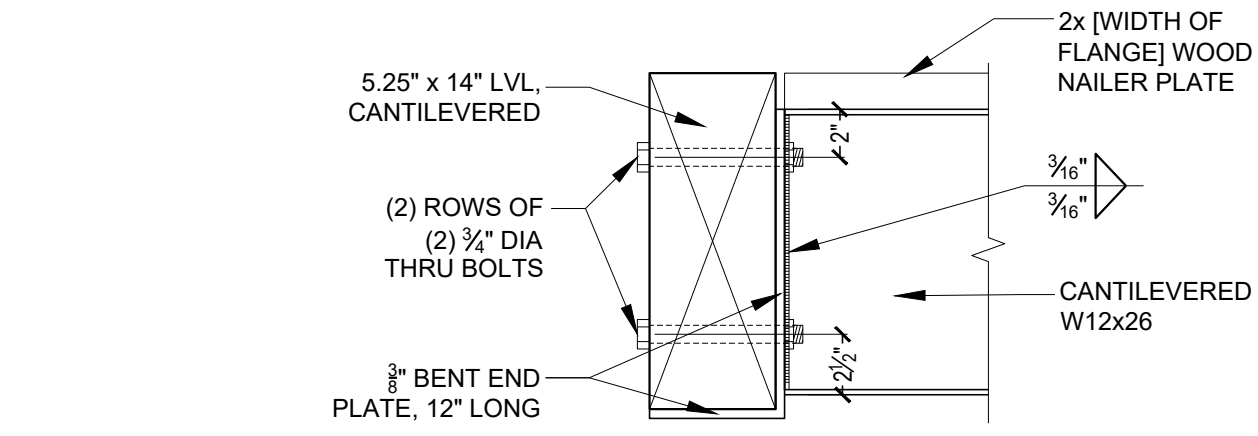
date
2.17.23
6.8.23

issue
DOB initial
BID SET

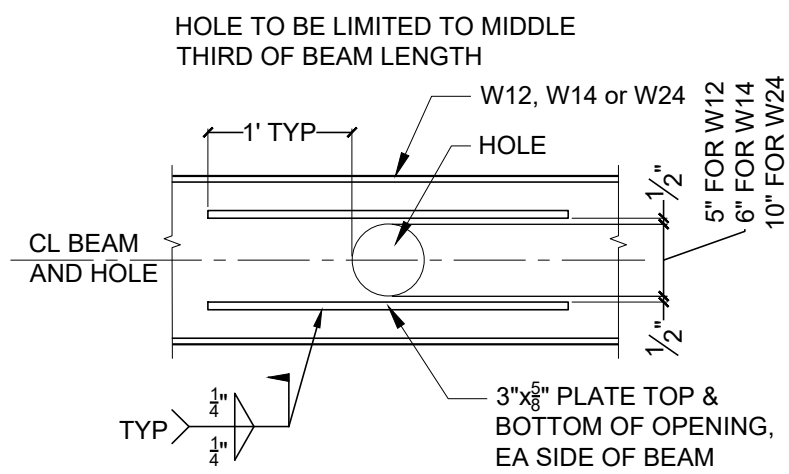
SEAL AND SIGNATURE

envelope &
framing details

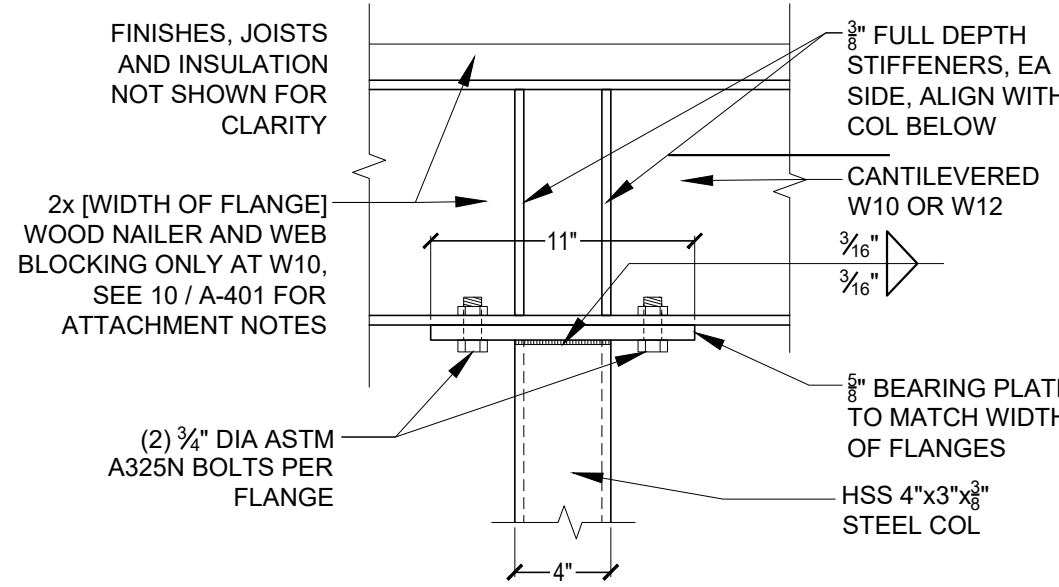
NYC DOB #
A-401.00
OF
details_hollywood.dwg



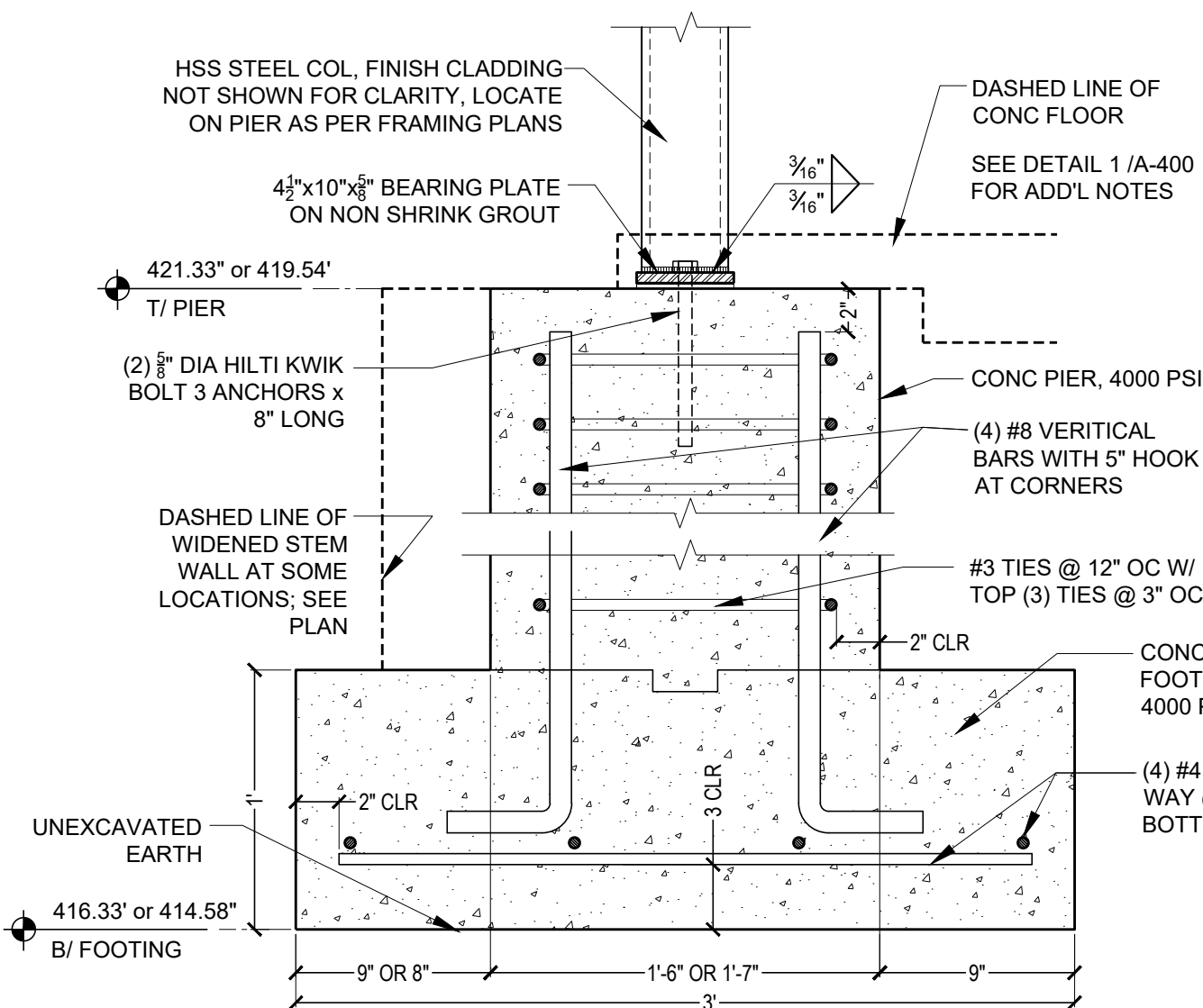
12 | LVL CONNECTION TO STEEL BEAM
3/4"=1'-0"



11 | BEAM PENETRATION
3/4"=1'-0"

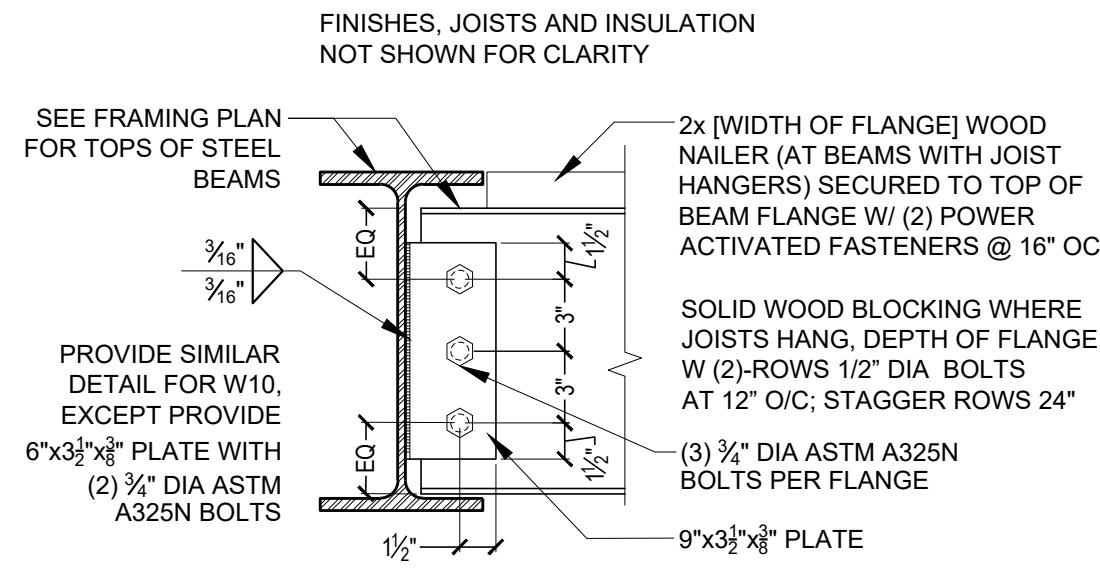


9 | CANT BEAM ON STEEL COLUMN, TYP
1 1/2"=1'-0"

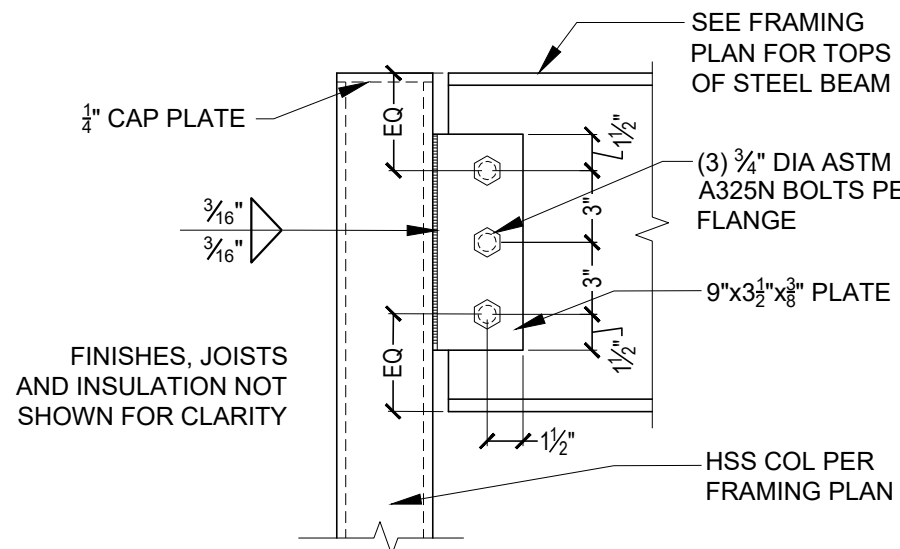


NOTE: PIER IS INTEGRATED INTO CONTINUOUS STEM WALL FOUNDATION AND FOOTING AS PER FOUNDATION PLAN. SEE DETAILS 4 / A-400 AND 1 / A-401.

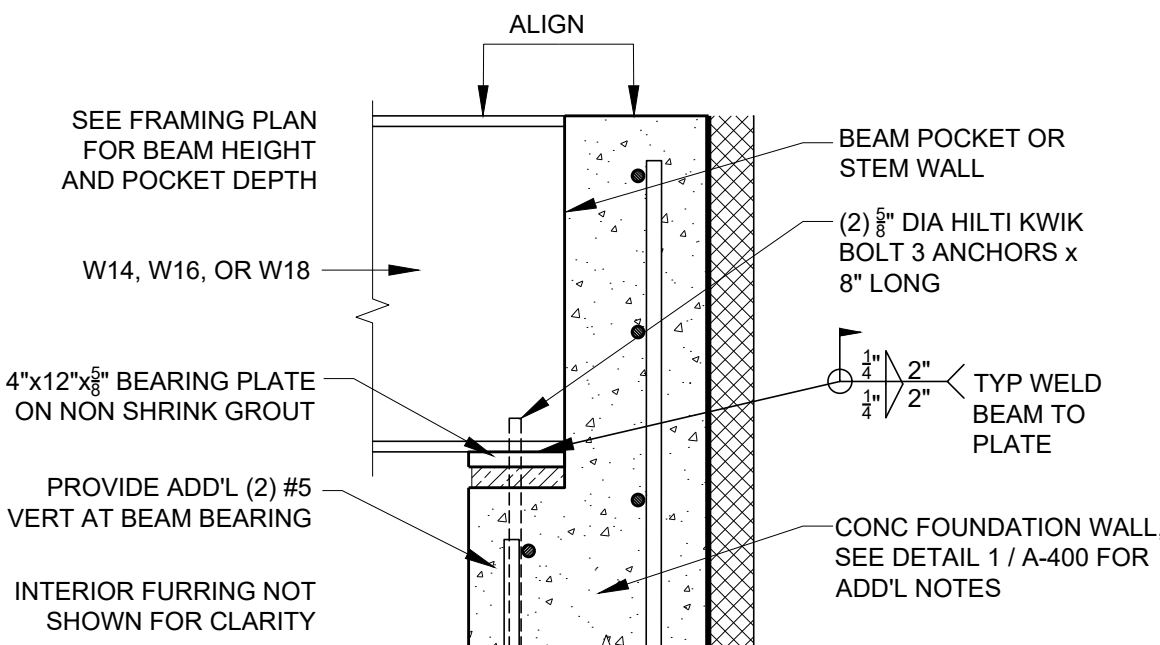
7 | STEEL COLUMN BEARING ON INTEGRATED PIER TYP
1 1/2"=1'-0"



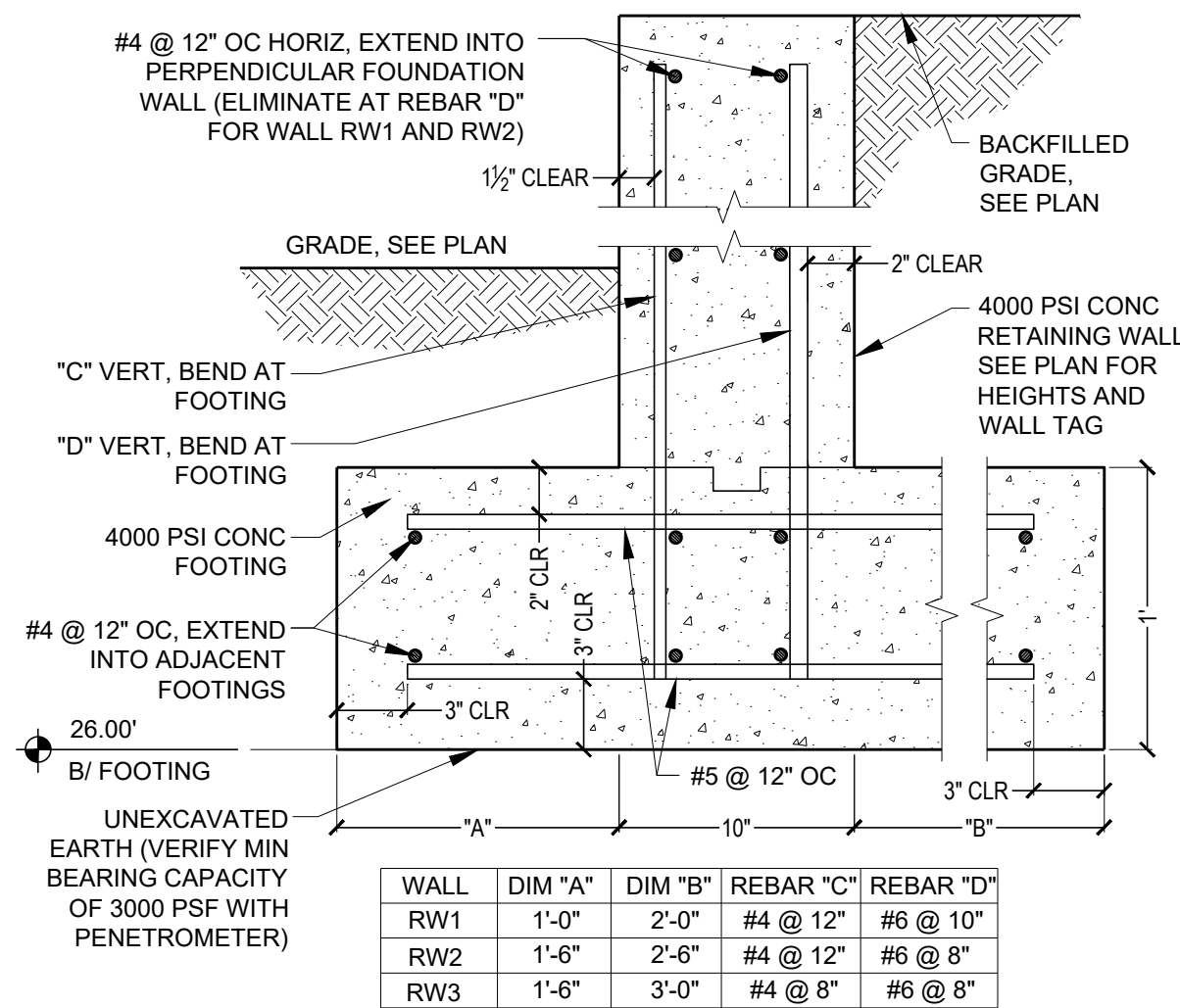
10 | STEEL BEAM TO BEAM CONNECTION, TYP
1 1/2"=1'-0"



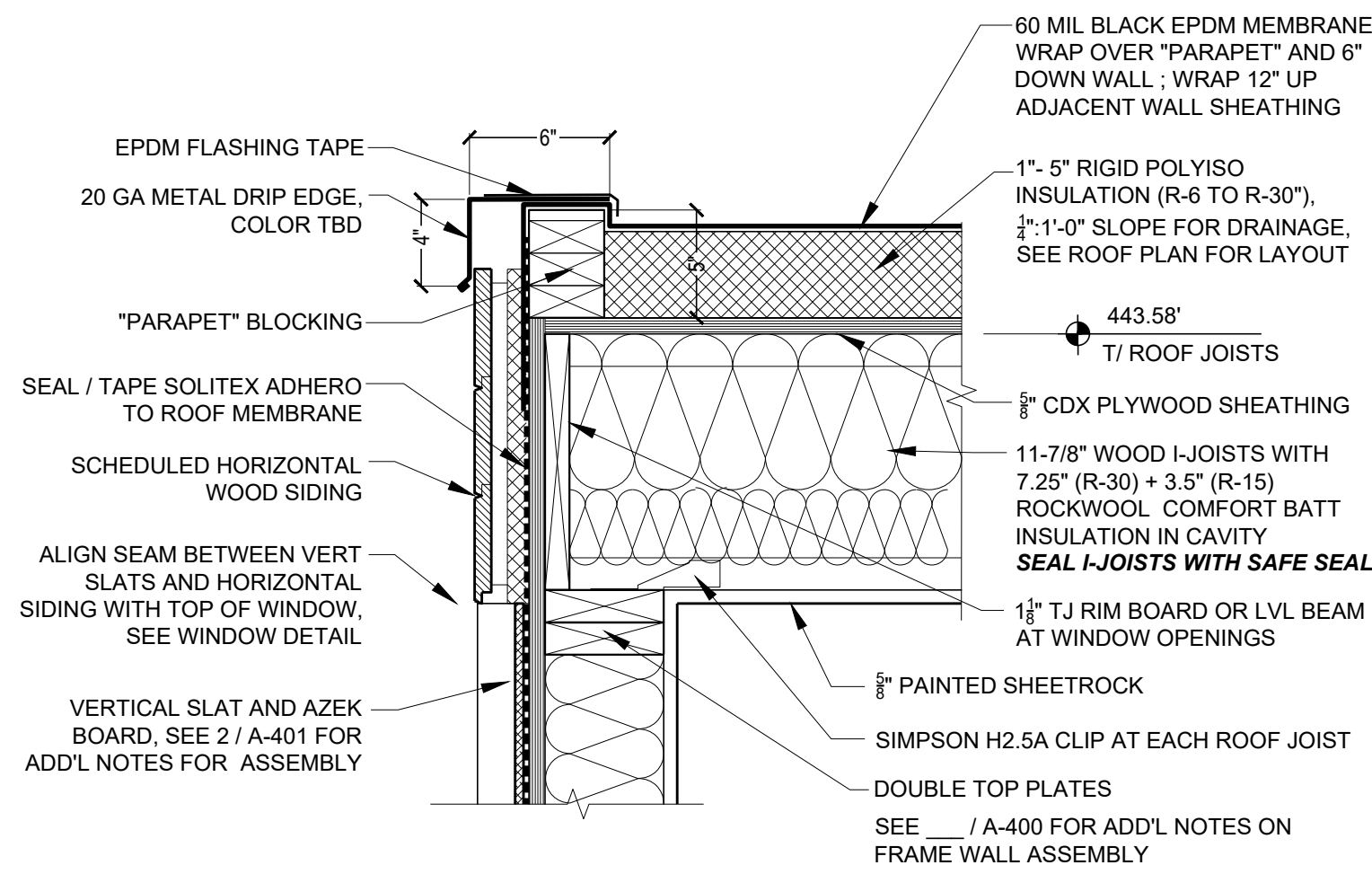
8 | STEEL BEAM TO COL CONNECTION, TYP
1 1/2"=1'-0"



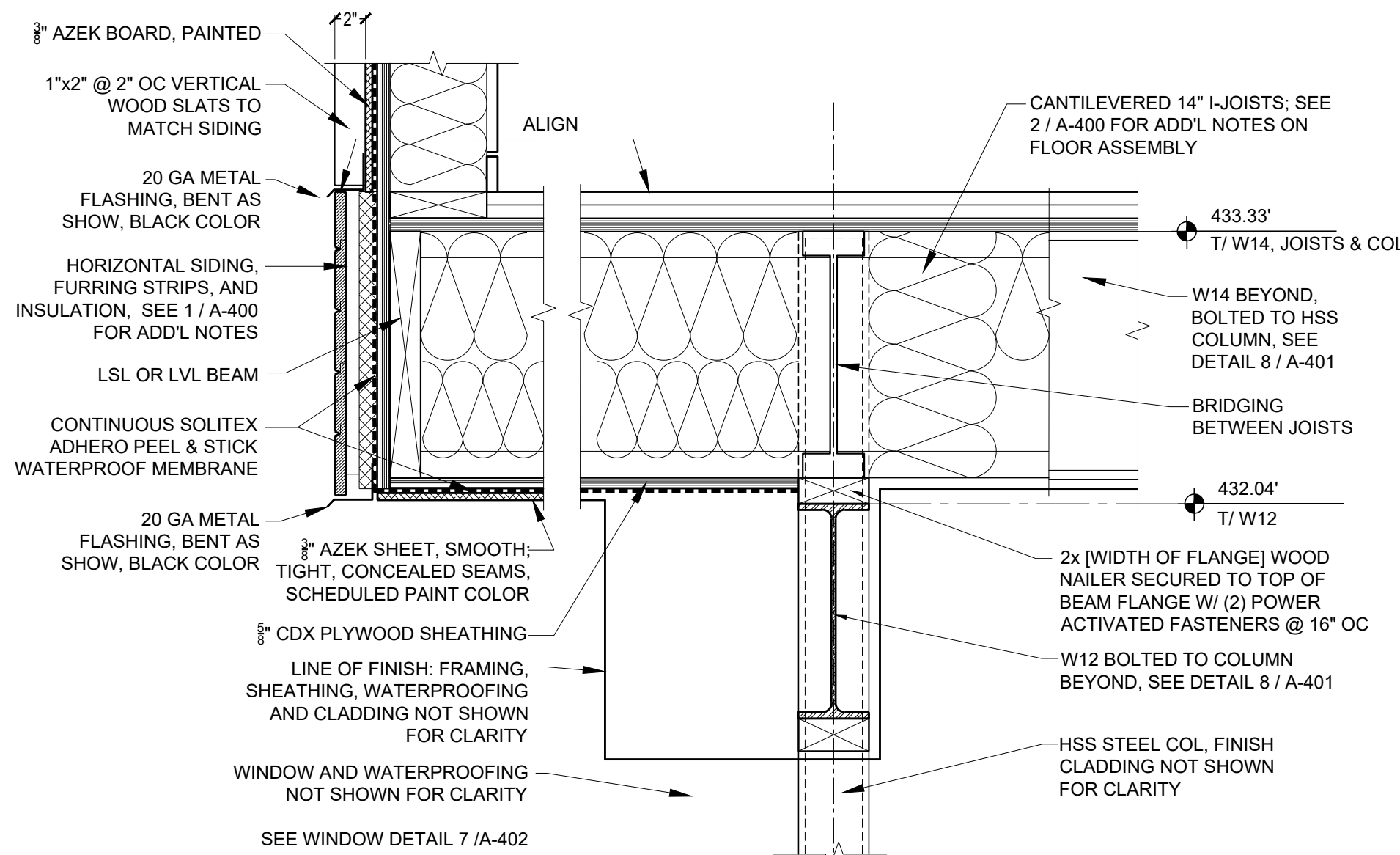
6 | STEEL BEAM BEARING ON WALL, TYP
1 1/2"=1'-0"



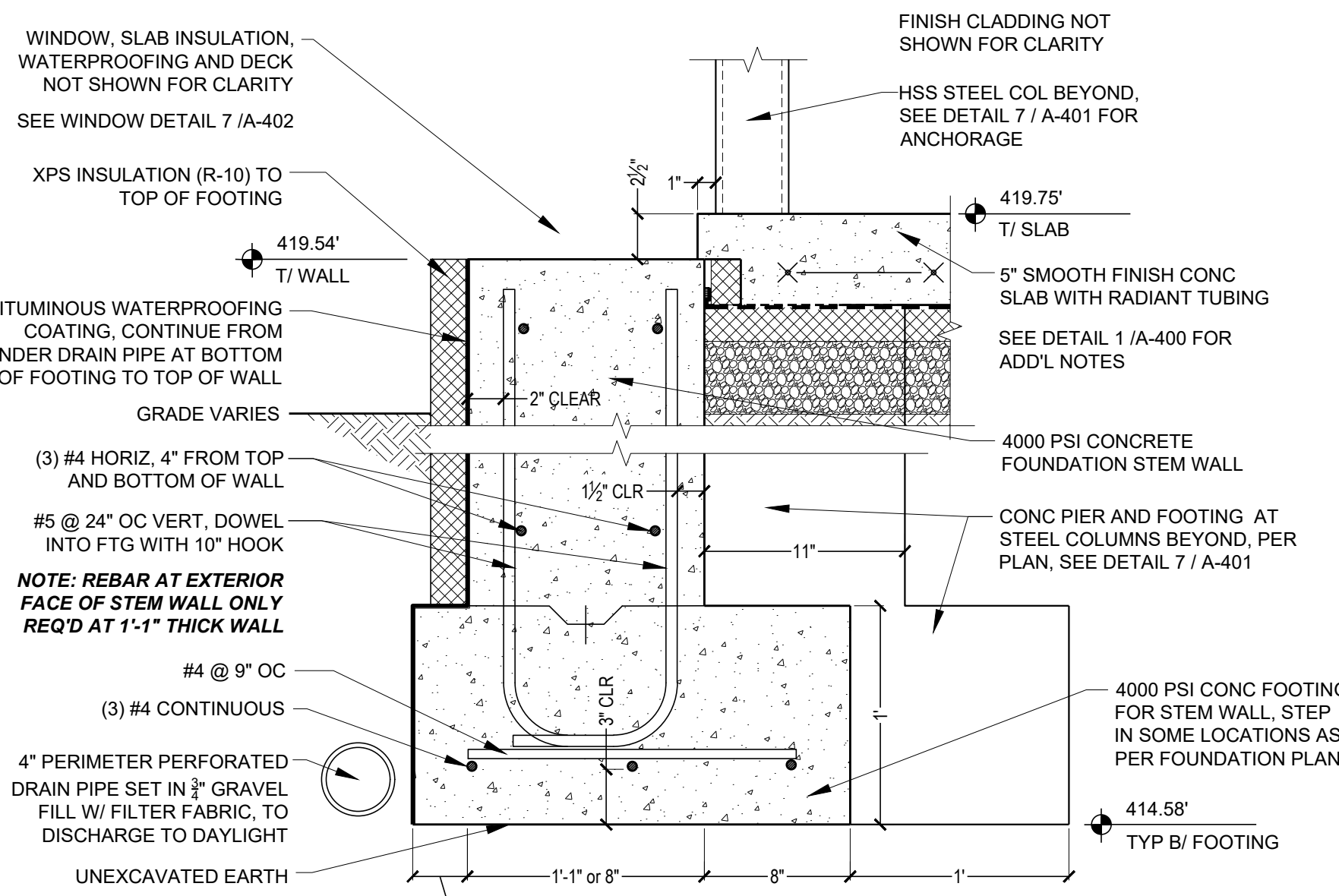
5 | RETAINING WALL, TYP
1 1/2"=1'-0"



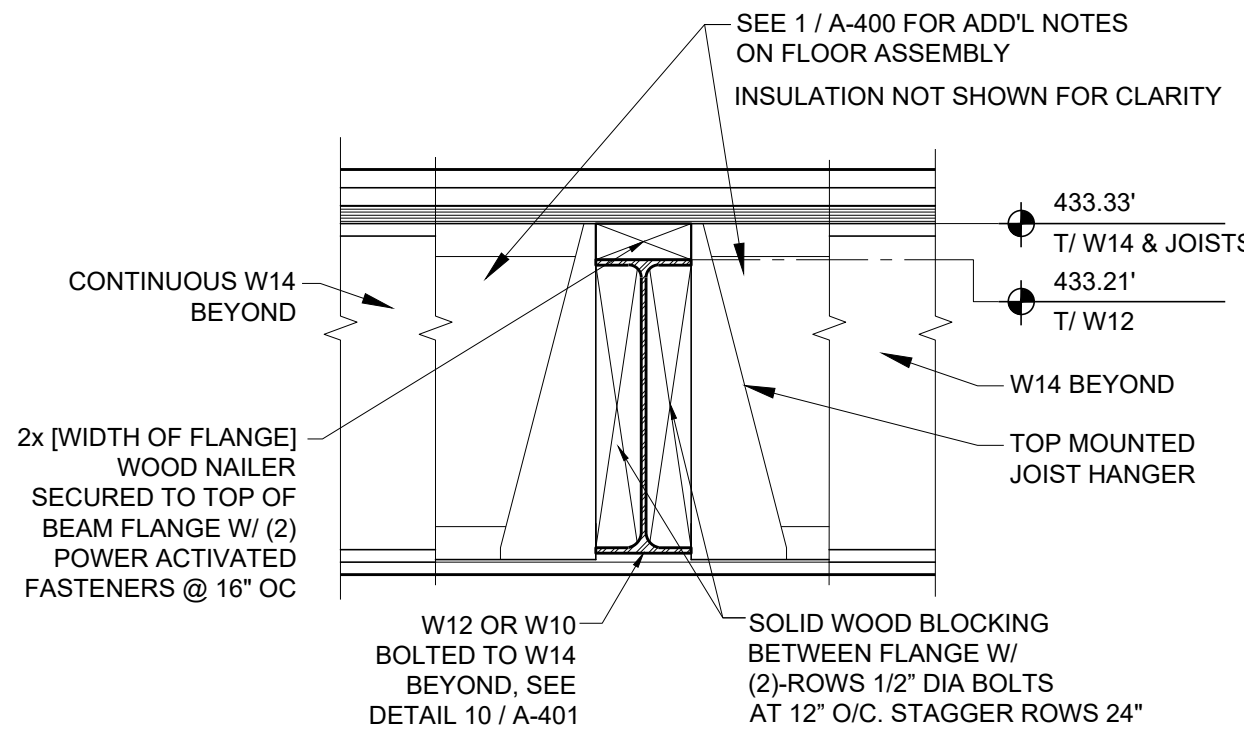
4 | TYP ROOF AT BEDROOMS
1 1/2"=1'-0"



2 | CANTILEVERED FLOOR / VERTICAL SLAT WALL AT BEDROOMS
1 1/2"=1'-0"



1 | FOOTING @ EXTERIOR CONC STEM WALL (LOW SLAB)
1 1/2"=1'-0"



3 | INTERIOR STEEL BEAM
1 1/2"=1'-0"