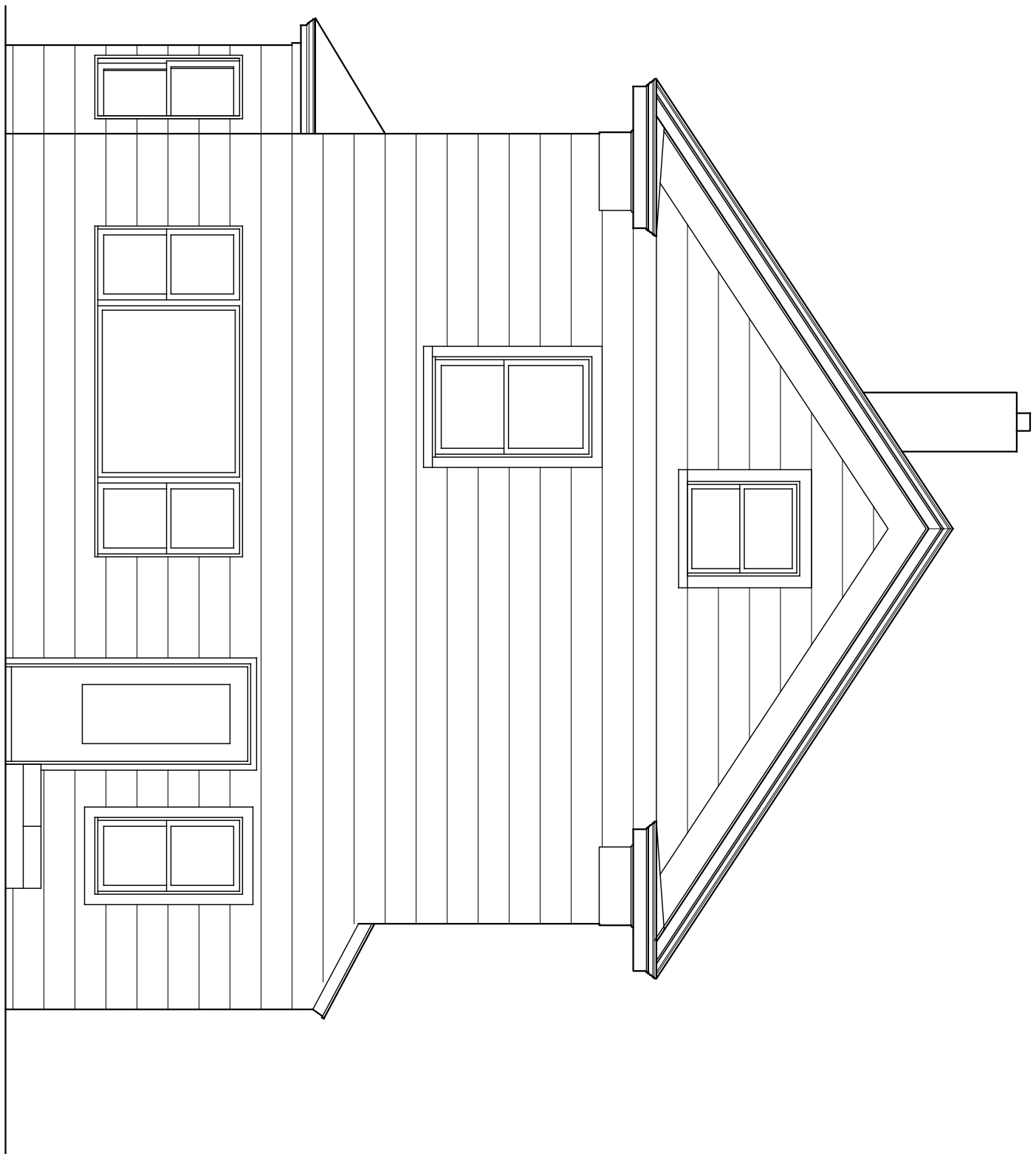
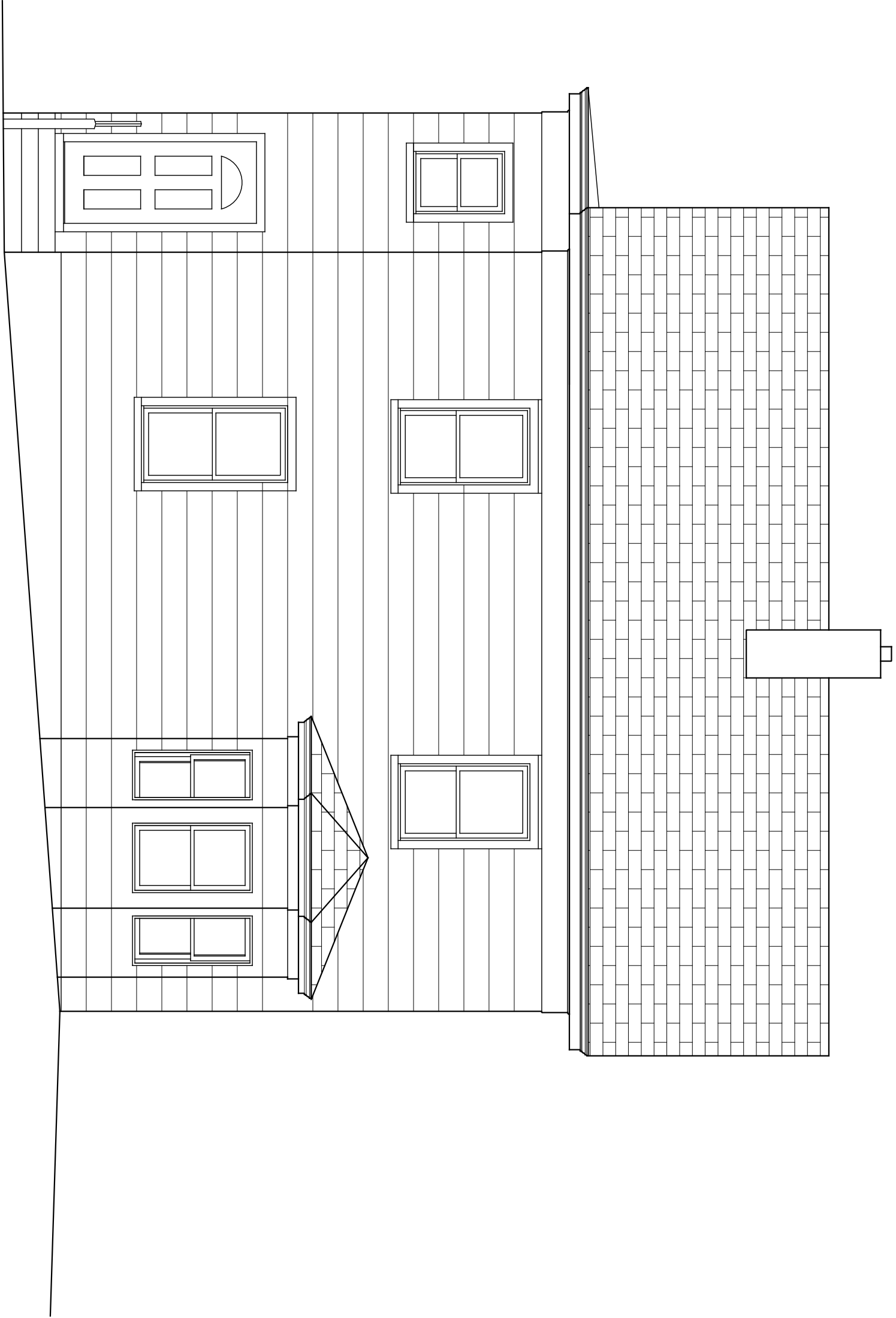


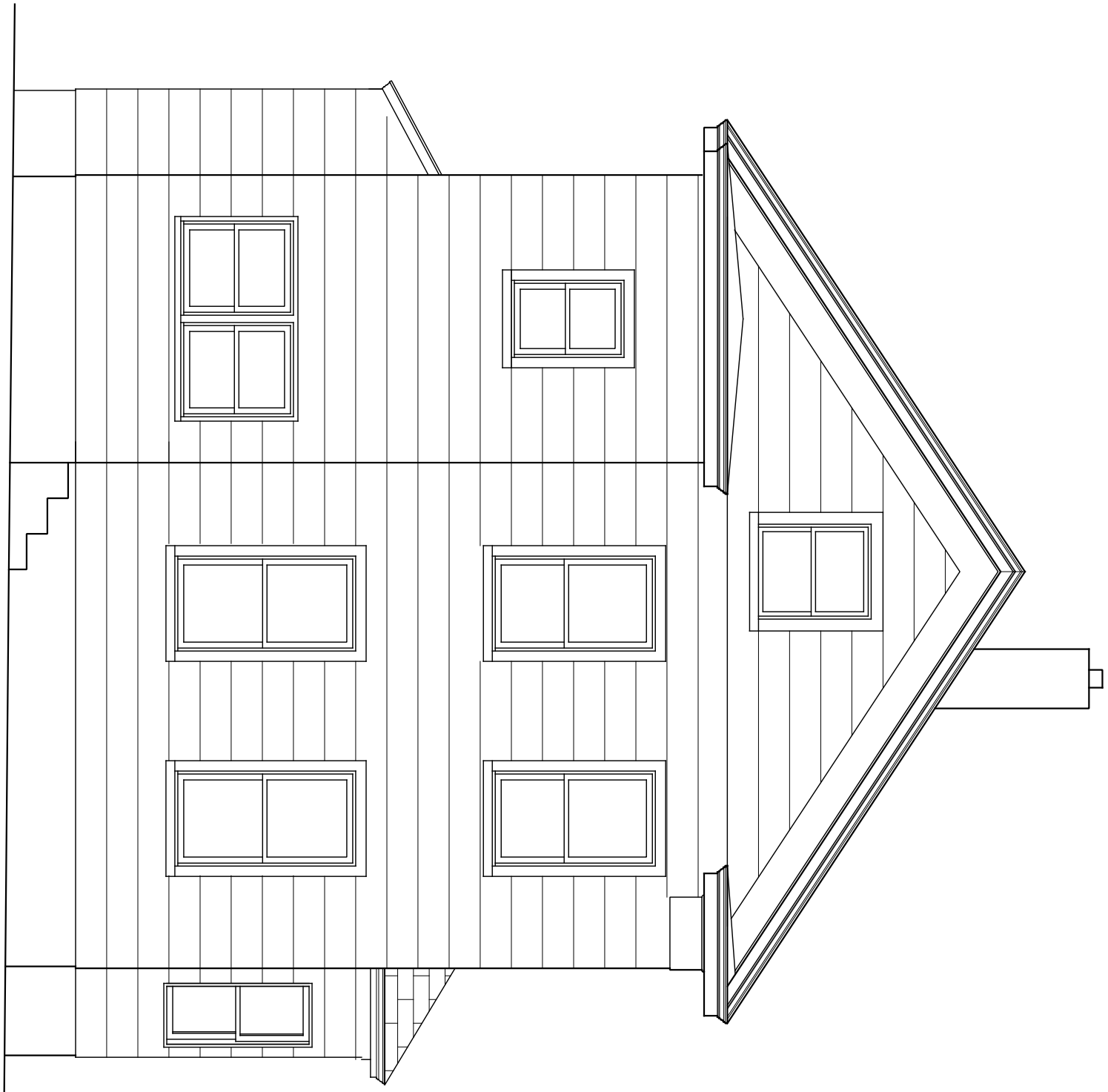
4 WEST ELEVATION (SIDE) _____
1/4" = 1'-0"



3 SOUTH ELEVATION (REAR) _____
1/4" = 1'-0"



2 EAST ELEVATION (SIDE) _____
1/4" = 1'-0"



1 NORTH ELEVATION (FRONT) _____
1/4" = 1'-0"

**Furnugia/Oregon
Alteration**
14 Devree Street
Dobbs Ferry, NY

**ZONING BOARD OF
APPEALS SUBMITTAL**
AUGUST 12, 2020

Drawn by:

Scale:
3/4" = 1'-0"

**EXISTING
EXTERIOR
ELEVATIONS**

E200