

Village of Dobbs Ferry Bellair Drainage improvements

ADDENDUM NO. 1 October 3, 2022

The following revisions are being issued for the above referenced Project.

1. Replace bid sheet C- 5 and C-6.
2. Replace drawing no. C-011.

The contractor shall sign for the receipt of addendum in Section C, page C-4.

**THIS ADDENDUM MUST BE SUBMITTED TOGETHER WITH THE ORIGINAL
SPECIFICATIONS AND CONTRACT DOCUMENTS BOOK. SUBMIT THIS
ADDENDUM IN ITS ENTIRETY.**

**Village of Dobbs Ferry
Bellair Drainage Improvements**

BID SHEETS

Note: Unit prices are to be written in both words and numbers.
In case of any discrepancy those prices shown in words shall govern.
All prices will be in dollars and cents.

Item No.	Quantity	Unit	Item with Unit Price Written in Words	Unit Price in Numbers	Extension: Est. Quantity Times Unit Price in Numbers
1M	1	LS	Miscellaneous Additional Work Fifty Thousand		
				\$50,000.00	\$50,000.00
		LS			
2M	20	CY	Miscellaneous Earth Excavation		
		CY			
5R	200	CY	Rock Excavation - Trench (NO BLASTING)		
		CY			
10HDPE-15"	380	LF	Furnish & Install 15" HDPE Watertight Storm Water Drainage Line		
		LF			
10HDPE-18"	122	LF	Furnish & Install 18" HDPE Watertight Storm Water Drainage Line		
		LF			

**Village of Dobbs Ferry
Bellair Drainage Improvements**

BID SHEETS

Note: Unit prices are to be written in both words and numbers.
In case of any discrepancy those prices shown in words shall govern.
All prices will be in dollars and cents.

Item No.	Quantity	Unit	Item with Unit Price Written in Words	Unit Price in Numbers	Extension: Est. Quantity Times Unit Price in Numbers
10DIP-16"	78	LF	Furnish & Install 16" DIP Storm Water Drainage Line		

			_____ LF		
20G	75	LF	Furnish & Install Concrete Curb & Gutter		

			_____ LF		
25CC	1,117	LF	Furnish & Install Concrete Curbing w/ Reinforcing		

			_____ LF		
25CC	350	LF	Furnish & Install Concrete Curbing as Directed by Engineer		

			_____ LF		
30-S	157	LF	Pavement Sawcutting		

			_____ LF		
39	20	CY	Furnish & Install Crushed Stone		

			_____ CY		

**Village of Dobbs Ferry
Bellair Drainage Improvements**

BID SHEETS

Note: Unit prices are to be written in both words and numbers.
In case of any discrepancy those prices shown in words shall govern.
All prices will be in dollars and cents.

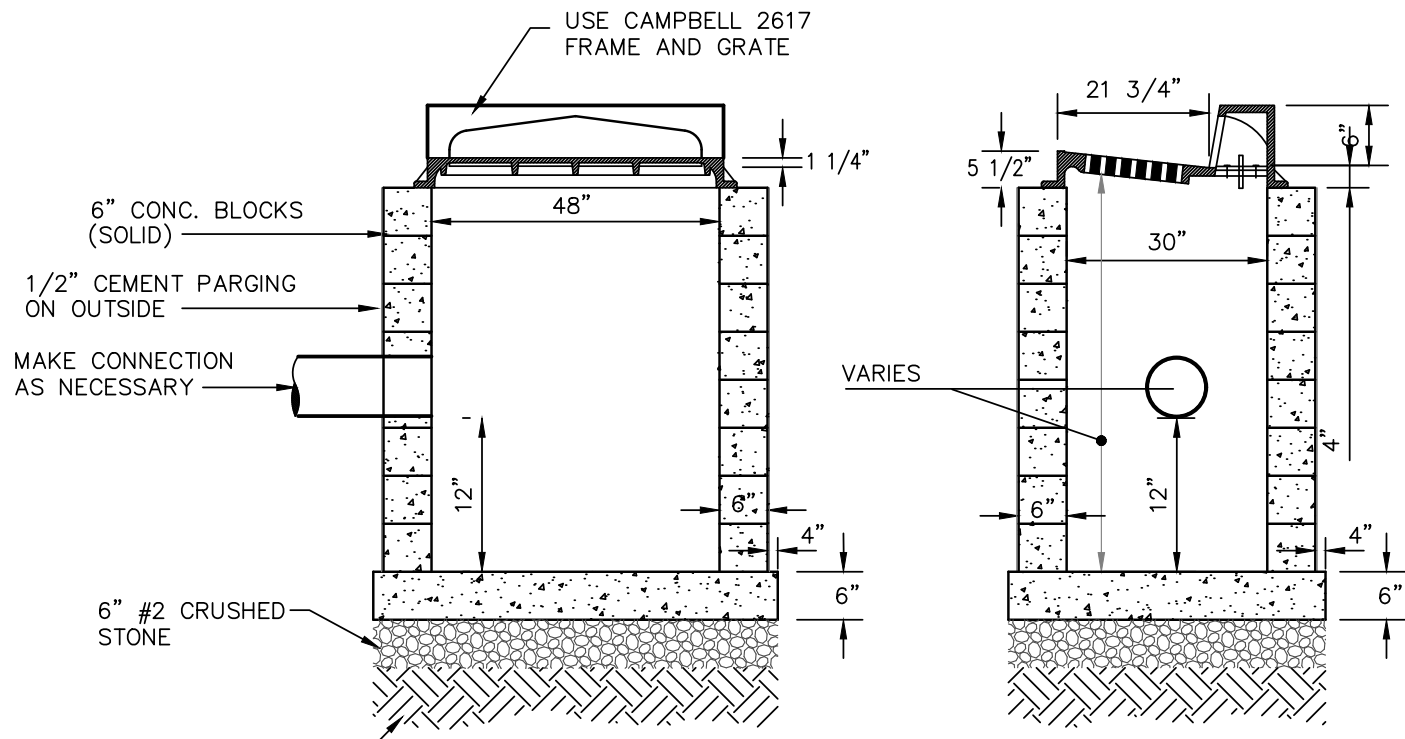
Item No.	Quantity	Unit	Item with Unit Price Written in Words	Unit Price in Numbers	Extension: Est. Quantity Times Unit Price in Numbers
43	40	TONS	Furnish & Install Truing & Leveling Course		
			<u>TONS</u>		
51WMA - Top Course	275	TONS	Furnish & Install Top Course Warm Mix Asphalt		
			<u>TONS</u>		
51	275	SY	Furnish & Install Temporary Pavement		
			<u>SY</u>		
51M	2,012	SY	Cold Milling and Removal of Bituminous Pavements		
			<u>SY</u>		
73	191	CY	Furnish & Install Control Backfill Material		
			<u>LS</u>		
76	1	LS	Maintenance & Protection of Traffic		
			<u>EA</u>		
102CB	10	EA	Furnish & Install Precast Concrete Catch Basin		
			<u>EA</u>		

**Village of Dobbs Ferry
Bellair Drainage Improvements**

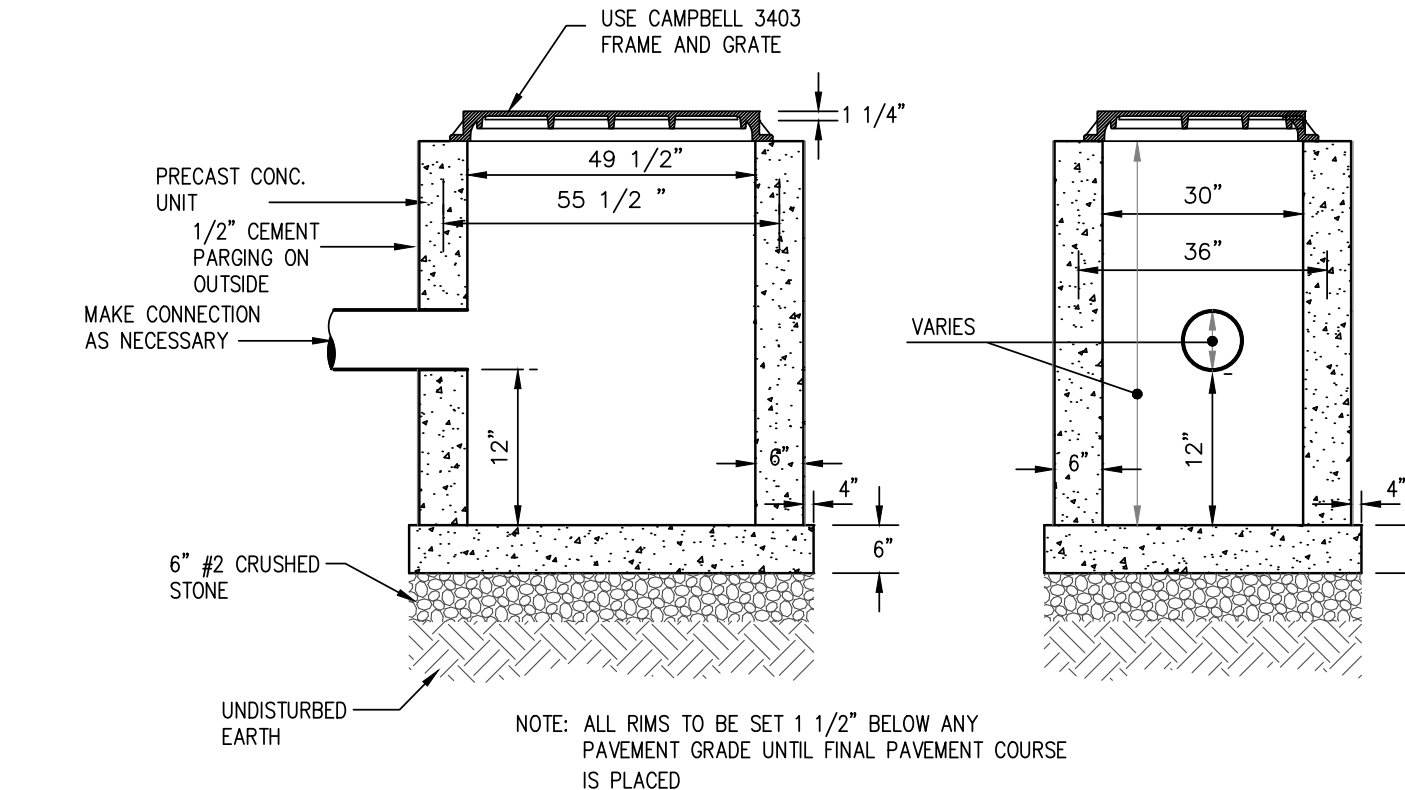
BID SHEETS

Note: Unit prices are to be written in both words and numbers.
In case of any discrepancy those prices shown in words shall govern.
All prices will be in dollars and cents.

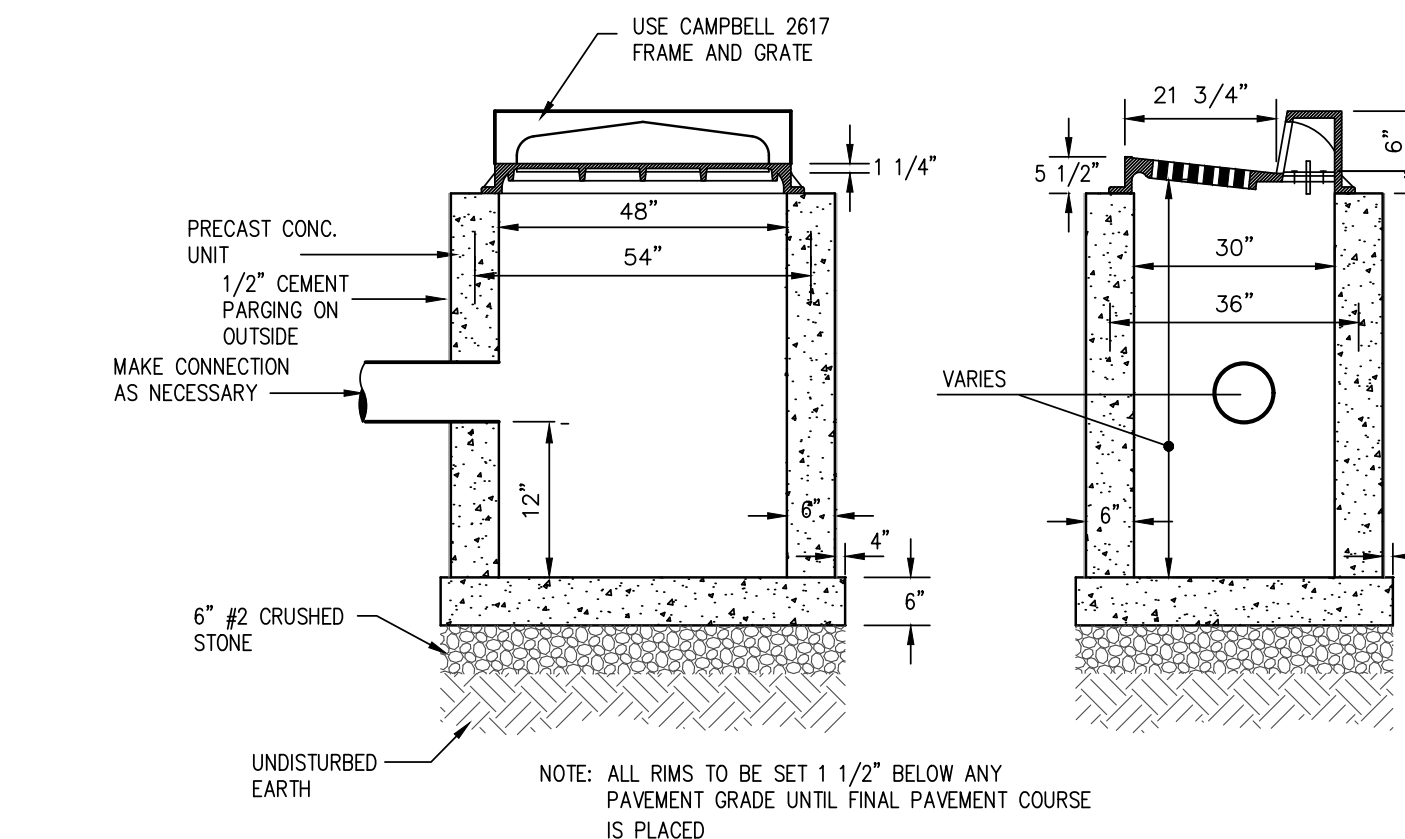
Item No.	Quantity	Unit	Item with Unit Price Written in Words	Unit Price in Numbers	Extension: Est. Quantity Times Unit Price in Numbers
102CBO	1	EA	Furnish & Install overisezed Precast Concrete Catch Basin		
			<hr/>		
			<hr/> EA	<hr/>	<hr/>
102MC	4	EA	Furnish & Install Precast Concrete Manholes		
			<hr/>		
			<hr/> EA	<hr/>	<hr/>
103	3	EA	Connection To Existing Structure		
			<hr/>		
			<hr/> EA	<hr/>	<hr/>



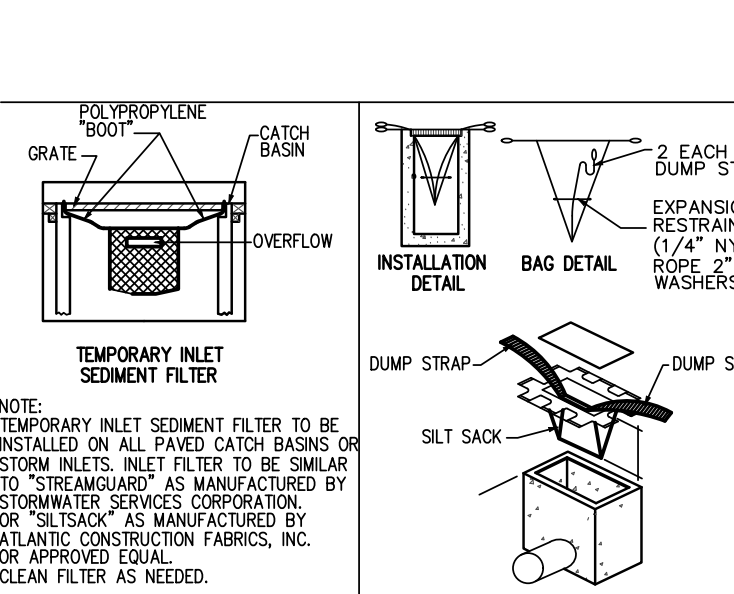
CONCRETE BLOCK CATCH BASIN



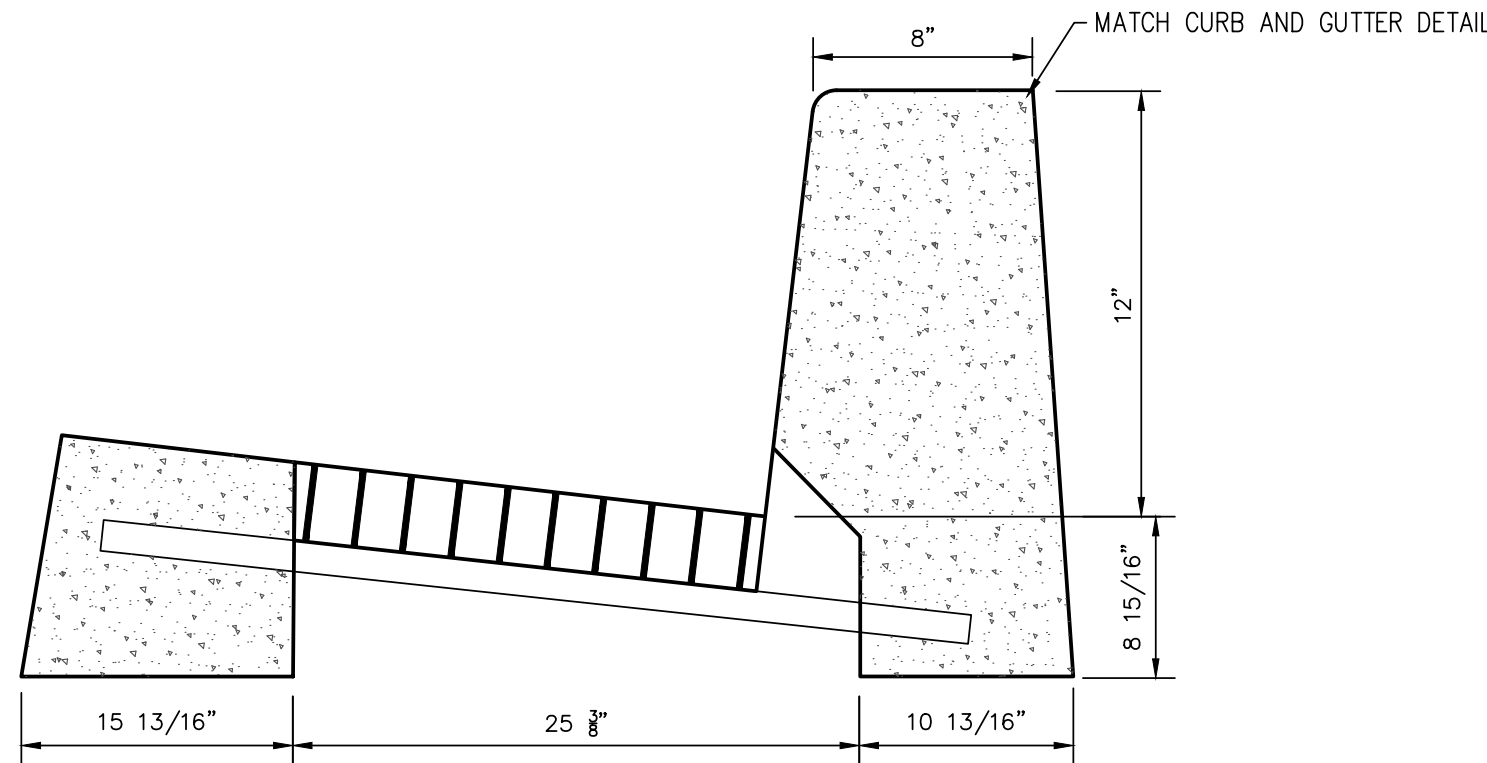
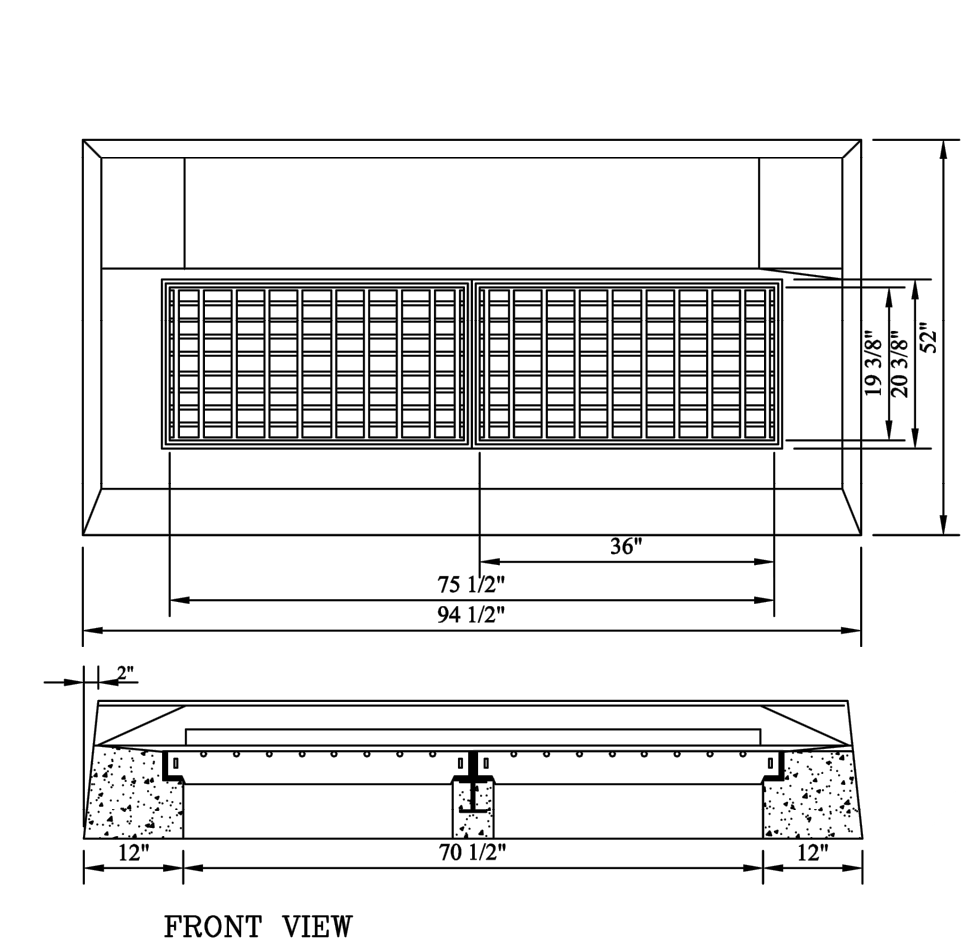
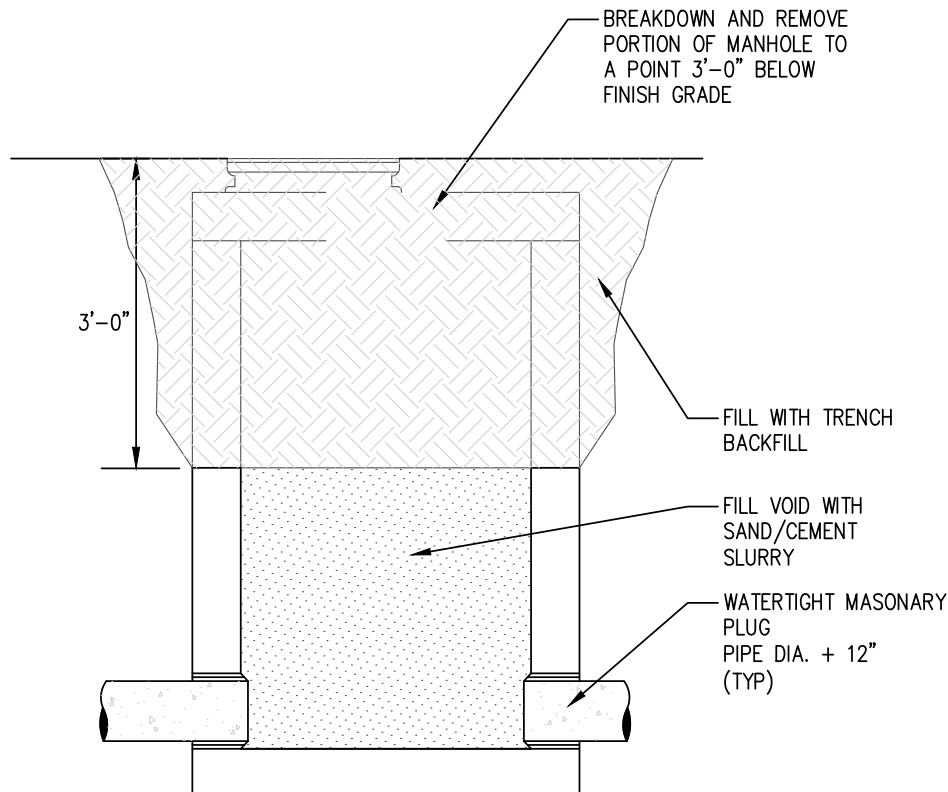
PRECAST CONCRETE CATCH BASIN WITHOUT CURB BOX



PRECAST CONCRETE CATCH BASIN WITH CURB BOX

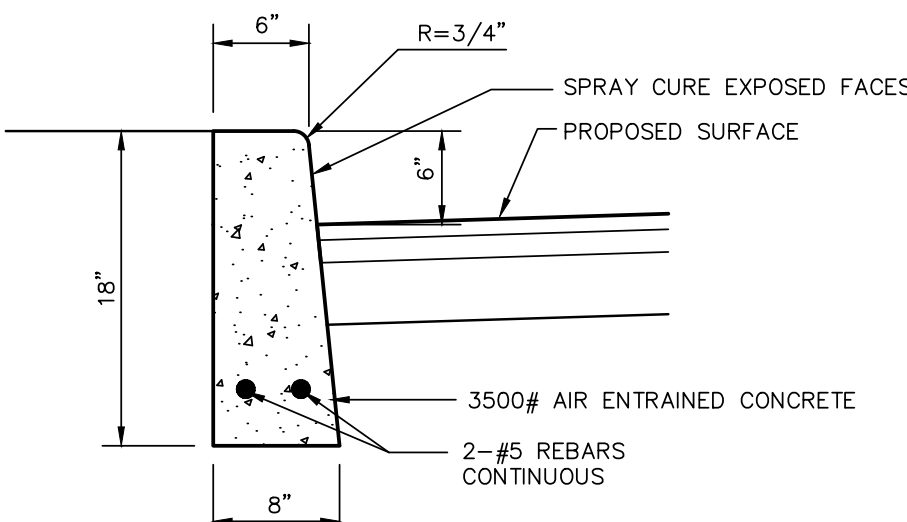


SILT SACK



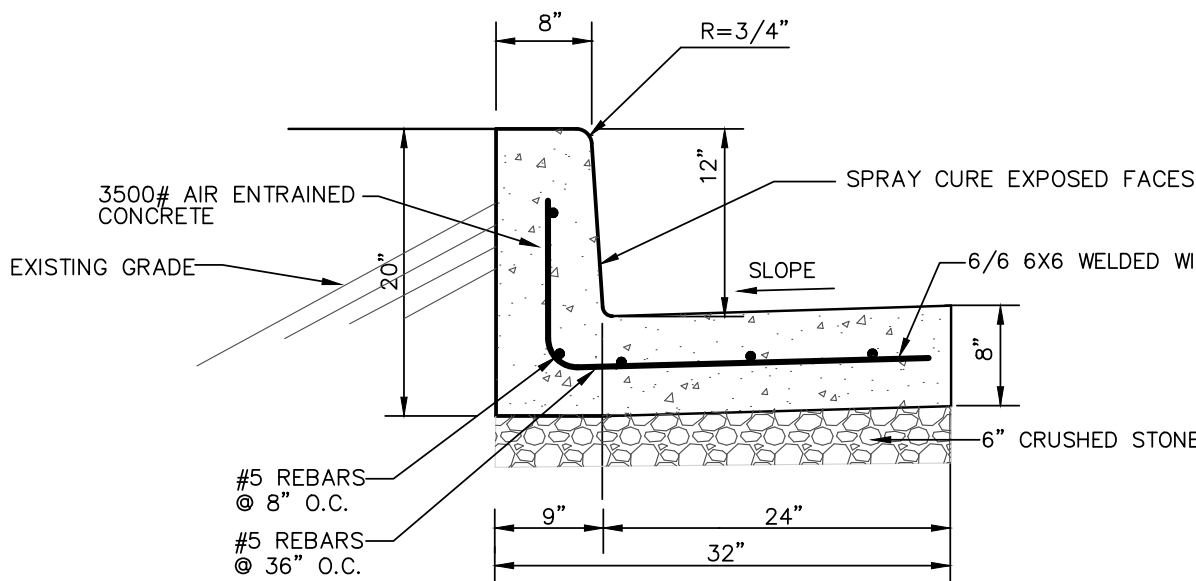
OVERSIZE PRECAST CATCH BASIN INLET

CONTRACTOR TO SUBMIT SHOP DRAWINGS FOR ENGINEER'S APPROVAL



NOTE: EXPANSION JOINTS TO BE INSTALLED EVERY 10 FEET.

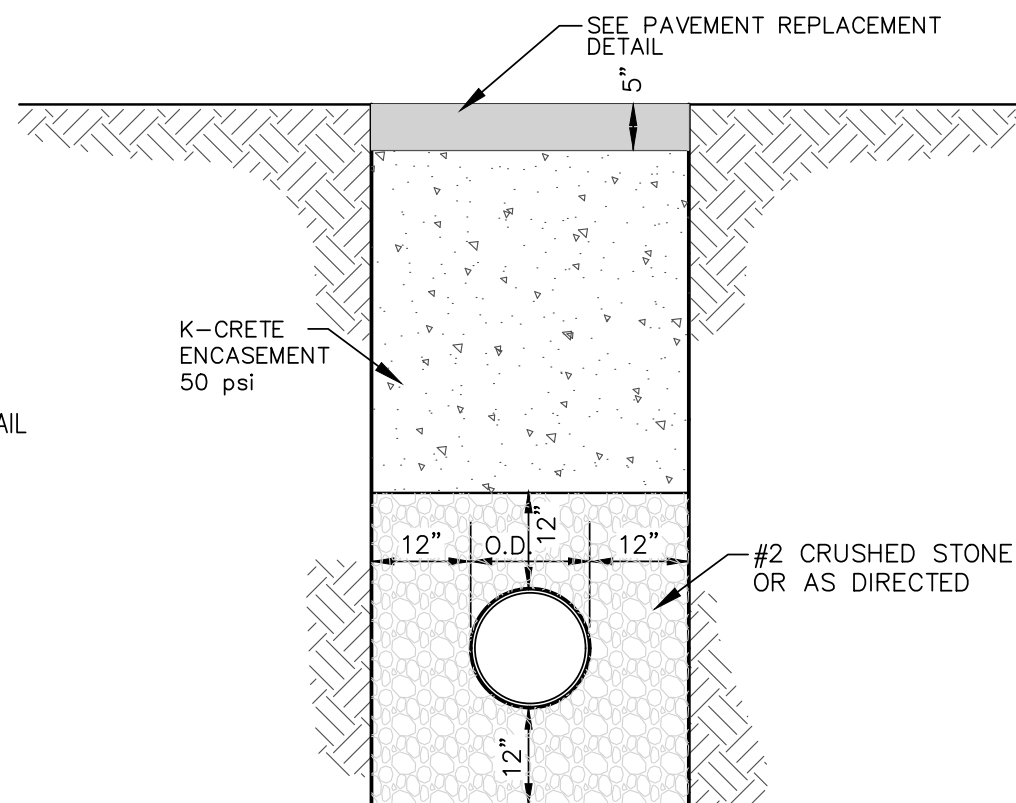
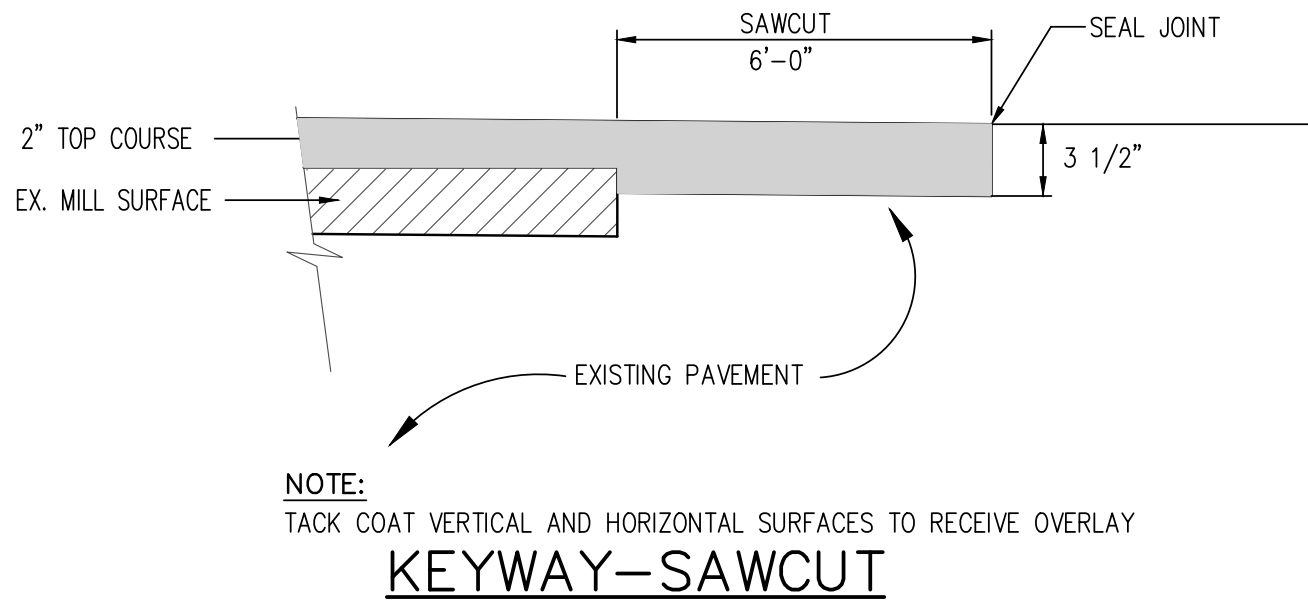
CONCRETE CURB



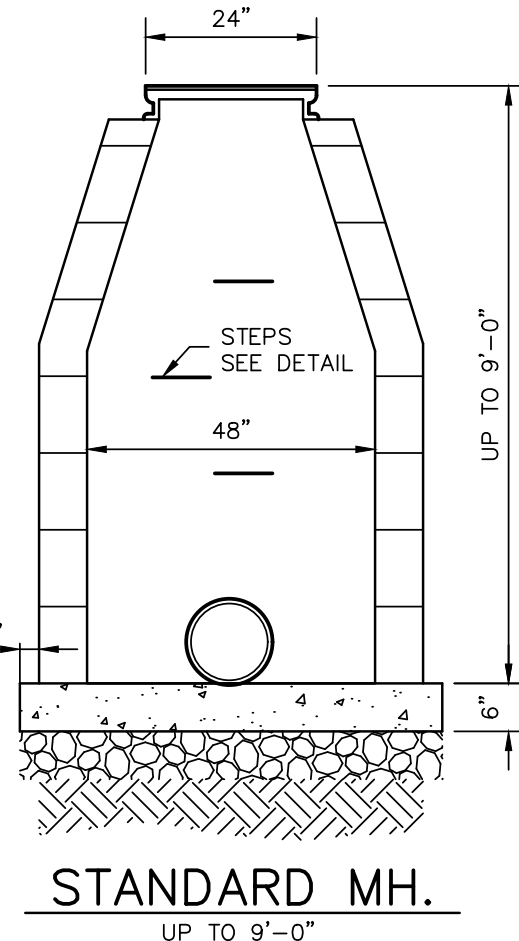
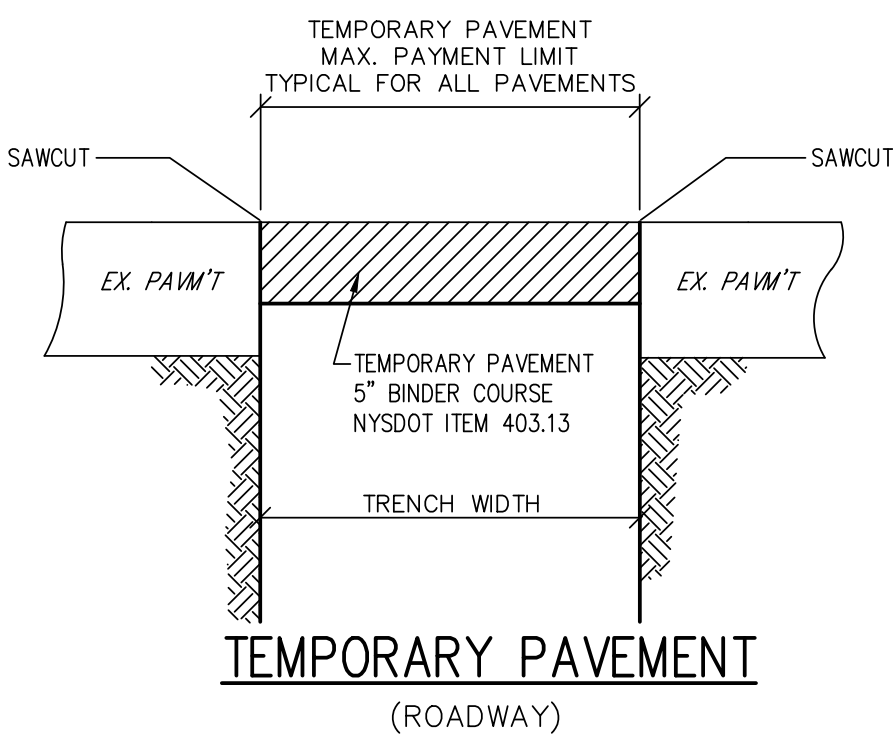
NOTE: EXPANSION JOINTS TO BE INSTALLED EVERY 10 FEET.

12" REVEAL CONCRETE CURB

CONTRACTOR TO SUBMIT SHOP DRAWINGS FOR ENGINEER'S APPROVAL



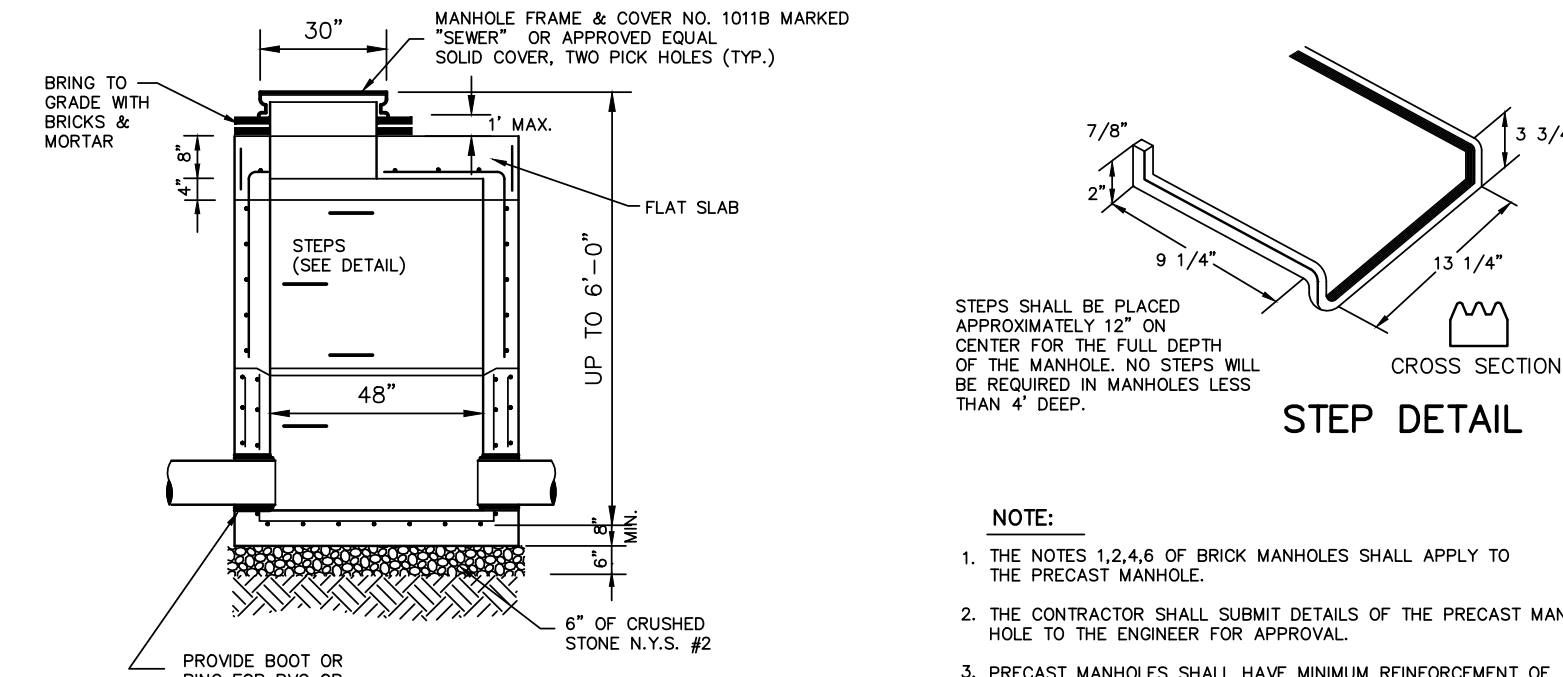
TRENCH BEDDING (ALL PIPES)



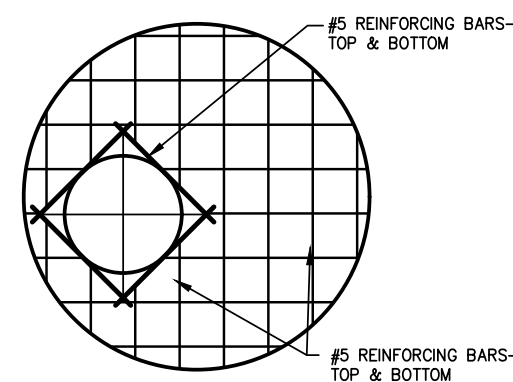
NOTES:

- MANHOLES SHALL BE MADE OF 8" BRICK, 6" SOLID CONCRETE MH. BLOCKS, OR PRECAST
- MANHOLE FRAME & COVERS TO BE CAMPBELL PATTERN #1009 FOR 24" OPENINGS OR APPROVED EQUAL. MH. COVERS TO BE MARKED "SEWER" AND TO HAVE SIX 3/4" Ø HOLE VENTS. (USE SOLID COVERS WHERE NECESSARY.)
- EXTERIOR & INTERIOR OF ALL MANHOLES SHALL HAVE A 1/2" CEMENT PLASTER FINISH. THE EXTERIOR SHALL ALSO BE COVERED WITH AN APPROVED ASPHLT WATERPROOFING.
- A MANHOLE WATERSTOP SHALL BE INSTALLED WHERE THE PIPE ENTERS INTO AN EXISTING OR BLOCK MANHOLE, AS APPROVED BY THE TOWN ENGINEER.

BRICK OR BLOCK MANHOLE



NOTE: CONC. TO TEST 4000 PSI AT TIME OF DELIVERY. REBAR SECTIONS IDENTICAL TO STANDARD PRECAST CONC. MANHOLE.



PRECAST CONCRETE MANHOLE (FLAT SLAB)

NOTES:

- THE NOTES 1,2,4,6 OF BRICK MANHOLES SHALL APPLY TO THE PRECAST MANHOLE.
- THE CONTRACTOR SHALL SUBMIT DETAILS OF THE PRECAST MANHOLE TO THE ENGINEER FOR APPROVAL.
- PRECAST MANHOLES SHALL HAVE MINIMUM REINFORCEMENT OF 0.12 SQIN. PER LIN. FT. FOR 48" BARREL & 0.17 SQIN. PER LIN. FT. FOR 60" BARREL & AS PER A.S.T.M. C-476.
- THE CONTRACTOR MAY WITH THE APPROVAL OF THE ENGINEER SUBSTITUTE A BUILT UP BASE SECTION CONSISTING OF 6" CONCRETE BLOCK WALLS & 6" MIN. THICKNESS CONCRETE SLAB(1:2.4 MAX.) FOR A PRECAST BASE SECTION.
- PRECAST BASE SECTION TO HAVE THE REQUIRED NUMBER OF GASKETS AND OPENINGS AS SHOWN AND SPECIFIED.
- PAVEMENT LIMITS LINES FOR ROCK EXCAVATION SHALL BE 1'-0" OUTSIDE THE WIDEST PART OF THE STRUCTURE.
- PRECAST MANHOLE SECTIONS SHALL EMPLOY A WATERIGHT GASKET ARRANGEMENT BETWEEN EACH SECTION APPROVED BY THE ENGINEER.
- GASKETS OR COLLARS FOR PIPE CONNECTIONS TO MANHOLES SHALL BE WATERIGHT AND COMPATIBLE WITH THE TYPE OF PIPE BEING USED.
- THE LENGTH OF PIPES ENTERING OR LEAVING ANY MANHOLE SHALL BE GREATER THAN 2'-0" BUT LESS THAN 6'-0"
- PRECAST MANHOLES UNDER 6'0" SHALL HAVE "FLAT TOP" SLAB ROOF.
- GASKETS OR COLLARS FOR PIPE CONNECTIONS TO MANHOLE SHALL PROVIDE A MIN. OF 0.1" SLOPE ACROSS THE MANHOLE.
- THE LEAKAGE OUTWARD OR THE INFILTRATION SHALL NOT EXCEED ONE HUNDRED(100) GALLONS PER INCH OF SEWER PIPE DIAMETER PER MILE PER DAY FOR ANY SECTION OF THE SEWERAGE SYSTEM AND MANHOLES.

GENERAL NOTES

- ANY CHANGES WHATSOEVER TO THE IMPROVEMENTS SHOWN OR NOT SHOWN ONE THE CONTRACT DRAWINGS SHALL BE AUTHORIZED BY THE ENGINEER.
- THE UTILITY MAINS, DUCTS, POLES AND SERVICES IN THE CONSTRUCTION AREA, WHERE SHOWN ON THE CONTRACT DRAWINGS ARE AT THE APPROX. LOCATIONS FURNISHED BY THE VARIOUS UTILITIES CONCERNED. WHENEVER EXISTING IMPROVEMENT INFORMATION IS EITHER INDICATED ON THE DRAWINGS OR SUPPLIED TO THE CONTRACTOR AT A LATER DATE, IT IS UNDERSTOOD THAT SUCH INFORMATION IS FURNISHED IN GOOD FAITH FOR THE CONTRACTOR'S CONVENIENCE. THE CONTRACTOR MUST INTERPRET THIS INFORMATION ACCORDING TO HIS OWN JUDGMENT, AND MUST MAKE MAKE HIS OWN DETERMINATIONS REGARDING THE LOCATION OF ALL IMPROVEMENTS. NO CLAIM WILL BE ALLOWED BECAUSE OF INCORRECT, INCOMPLETE OR OMITTED EXISTING IMPROVEMENT INFORMATION.
- ALL RIM ELEVATIONS FOR MANHOLES, CATCH BASINS, WATER AND GAS VALVES, ETC. MUST BE VERIFIED AND ADJUSTED TO MEET FIELD CONDITIONS.
- ALL WORK, MATERIALS, SPECIFICATIONS, REGULATIONS, RULES, PERMITS, ETC., OF ALL STATE, COUNTY AND LOCAL GOVERNMENTS AND ALL UTILITY AGENCIES SHALL BE FOLLOWED BY THE CONTRACTOR.
- THE CONTRACTOR'S ATTENTION IS DIRECTED TO THE STATE IF NEW YORK DEPARTMENT OF LABOR, BOARD OF STANDARDS AND APPEALS INDUSTRIAL CODE RULE 753 - "CONSTRUCTION, EXCAVATION AND DEMOLITION OPERATIONS AT OR NEAR UNDERGROUND FACILITIES", EFFECTIVE APRIL 1, 1975. THE CONTRACTOR WILL BE REQUIRED TO COMPLY WITH ALL APPLICABLE REQUIREMENTS OF INDUSTRIAL CODE RULE 753.
- PRIVATE UTILITIES, CONTRACTORS, DEVELOPERS, OR OTHER PARTIES MAY BE EXPECTED TO BE WORKING WITHIN THE CONTRACT AREA DURING THIS CONTRACT. IT SHALL BE THE RESPONSIBILITY OF THE CONTRACTOR TO COORDINATE HIS WORK UNDER THIS CONTRACT WITH THE WORK BEING DONE BY OTHERS IN ORDER THAT THE CONSTRUCTION MAY PROCEED IN A EFFICIENT AND LOGICAL MANNER.
- THE CONTRACTOR SHALL VERIFY ALL EXISTING AND PROPOSED ELEVATIONS IN THE FIELD.
- THE CONTRACTOR SHALL PROVIDE ALL BARRICADES, SIGNS, LIGHTS, ETC., FOR MAINTENANCE AND PROTECTION OF TRAFFIC FOR THE DURATION OF THIS CONTRACT, ALL IN ACCORDANCE WITH THE LATEST NYSOT MANUAL OF TRAFFIC CONTROL DEVICES.
- THE CONTRACTOR SHALL COMPLY WITH ALL RULES, REGULATIONS AND DIRECTIVES BY THE LOCAL POLICE DEPARTMENT.
- THE CONTRACTOR SHALL RESTORE ALL DISTURBED EXISTING FEATURES TO A CONDITION EQUAL TO OR BETTER THAN CURRENTLY EXISTED .
- THE CONTRACTOR SHALL COMPLY WITH THE LATEST OSHA CONFINED SPACE ENTRY REQUIREMENTS (29 CFR PART 1910).
- THE CONTRACTOR SHALL COMPLY WITH THE LATEST REVISED OSHA SHEETING REQUIREMENTS (29 CFR PART 1926.650,651,652).

ANY ALTERATIONS OR REVISIONS OF THESE PLANS, UNLESS DONE BY OR UNDER THE DIRECTION OF THE NYS LICENSED AND REGISTERED ENGINEER THAT PREPARED THEM, IS A VIOLATION OF THE NYS EDUCATION LAW.

Copyright © 2022

					DESIGNER/DRAFTER: pf	ENGINEER: AI Engineers, INC. dolph retfeld engineering division 570 TAXTER ROAD, ELMSFORD, NY 10523 (914) 631-8600	SIGNATURE/ BLOCK:	PROJECT TITLE: BELLAIR DRIVE DRAINAGE IMPROVEMENTS	VILLAGE: VILLAGE OF DOBBS FERRY, NY	PROJECT NO. 33270C-4
					CHECKED BY: JN					DRAWING NO. C-011
					APPROVED BY: AO				DRAWING TITLE: DETAILS AND NOTES	SHEET NO. 11 of 11
REV.	DATE	REVISION DESCRIPTION	SHEET NO.	PLOTTED DATE: 6/13/22	FILENAME: BELLAIR DRIVE DRAINAGE 9-14-22.DWG					