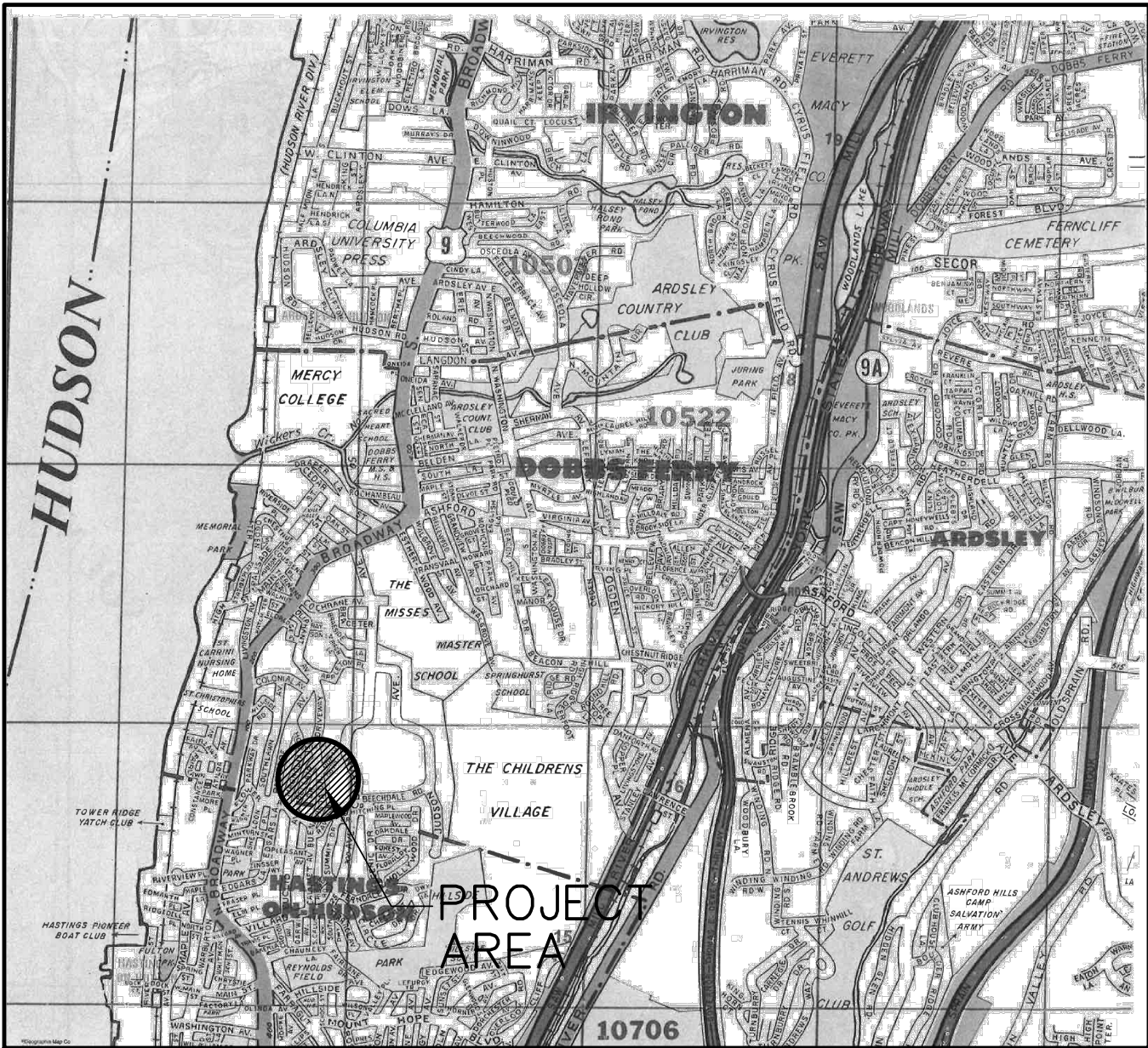


BELLAIR DRIVE DRAINAGE IMPROVEMENTS VILLAGE OF DOBBS FERRY, N.Y.

LIST OF DRAWINGS

COVER SHEET.....	1 of 11
EXISTING CONDITIONS PLAN.....	2 of 11
DEMOLITION PLAN.....	3 of 11
DEMOLITION PLAN.....	4 of 11
DEMOLITION PLAN.....	5 of 11
SITE PLAN	6 of 11
SITE PLAN.....	7 of 11
SITE PLAN.....	8 of 11
DRAINAGE PROFILE	9 of 11
DRAINAGE PROFILE	10 of 11
DETAILS.....	11 of 11



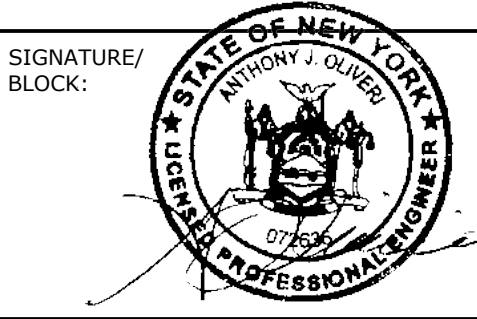
LOCATION MAP
N.T.S.

THIS PLAN IS NOT VALID FOR CONSTRUCTION
WITHOUT ENGINEERS SEAL & SIGNATURE

ANY ALTERATIONS OR REVISIONS OF THESE PLANS, UNLESS
DONE BY OR UNDER THE DIRECTION OF THE NYS LICENSED
AND REGISTERED ENGINEER THAT PREPARED THEM, IS A
VIOLATION OF THE NYS EDUCATION LAW.

Copyright © 2022

					DESIGNER/DRAFTER: pf	ENGINEER:		PROJECT TITLE:	VILLAGE:	PROJECT NO.
					CHECKED BY: JN				VILLAGE OF DOBBS FERRY, NY	33270C-4
					APPROVED BY: AO				DRAWING TITLE:	DRAWING NO.
									COVER SHEET	C-001
REV.	DATE	REVISION DESCRIPTION	SHEET NO.	PLOTTED DATE: 6/13/22		FILENAME: BELLAIR DRIVE DRAINAGE 9-14-22.DWG				SHEET NO.
										1 of 11



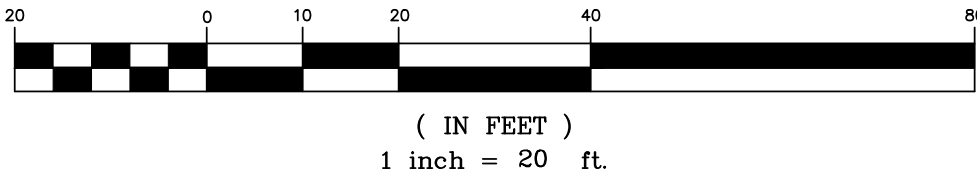
MATCH LINE A-A



MATCH LINE A-A

SITE PLAN


GRAPHIC SCALE

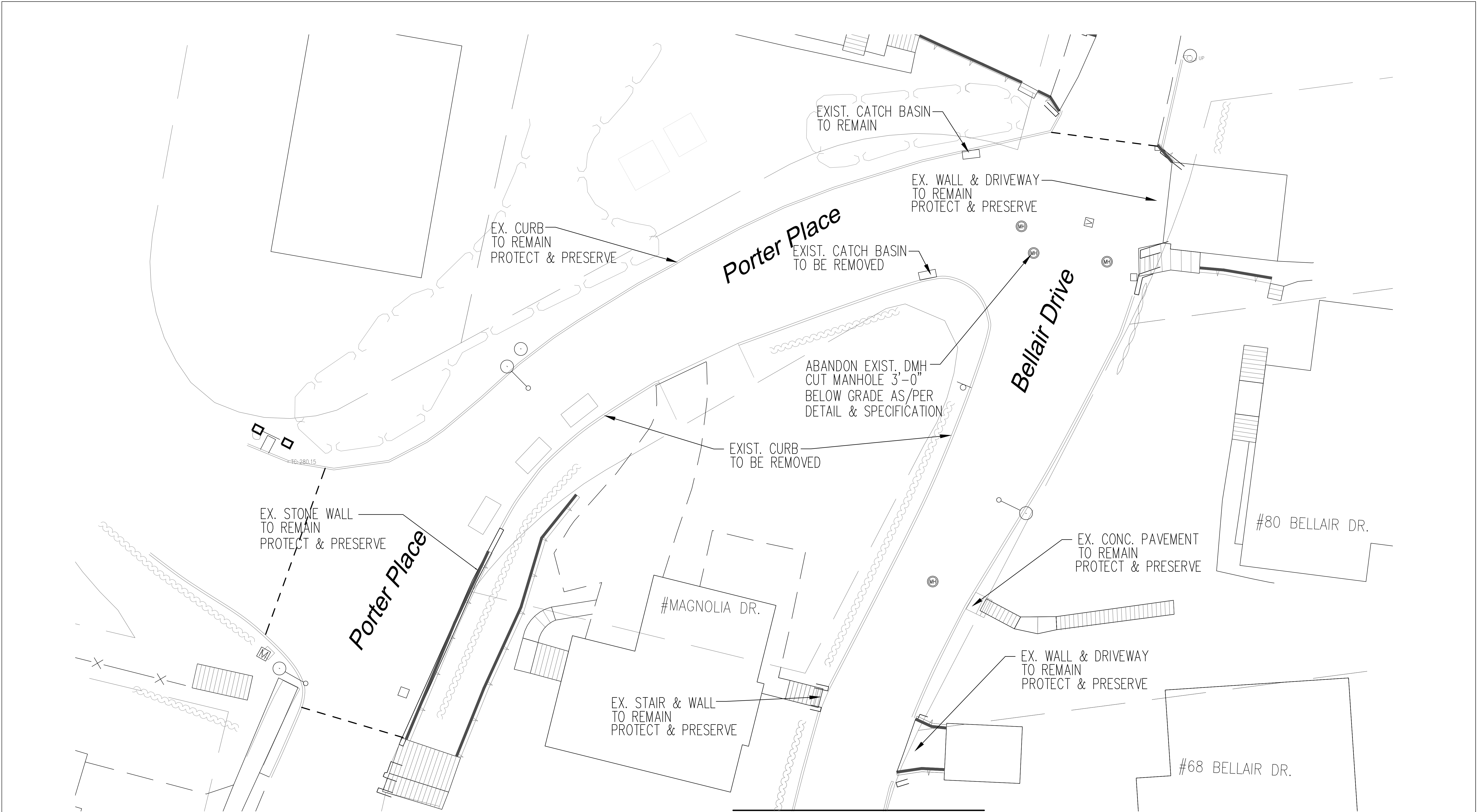


THIS PLAN IS NOT VALID FOR CONSTRUCTION
WITHOUT ENGINEER'S SEAL & SIGNATURE

ANY ALTERATIONS OR REVISIONS OF THESE PLANS, UNLESS
DONE BY OR UNDER THE DIRECTION OF THE NYS LICENSED
AND REGISTERED ENGINEER THAT PREPARED THEM, IS A
VIOLATION OF THE NYS EDUCATION LAW.

Copyright © 2022



					DESIGNER/DRAFTER: pf	ENGINEER: AI Engineers, INC. dolph rotfeld engineering division 570 TAXTER ROAD, ELMSFORD, NY 10523 (914) 631-8600	SIGNATURE/ BLOCK: 	PROJECT TITLE: BELLAIR DRIVE DRAINAGE IMPROVEMENTS	VILLAGE: VILLAGE OF DOBBS FERRY, NY	PROJECT NO. 33270C-4
					CHECKED BY: JN				DRAWING NO. C-002	
					APPROVED BY: AO				DRAWING TITLE: EXISTING CONDITIONS PLAN	SHEET NO. 2 of 11
REV.	DATE	REVISION DESCRIPTION	SHEET NO.	PLOTTED DATE: 6/13/22		FILENAME: BELLAIR DRIVE DRAINAGE 9-14-22.DWG				

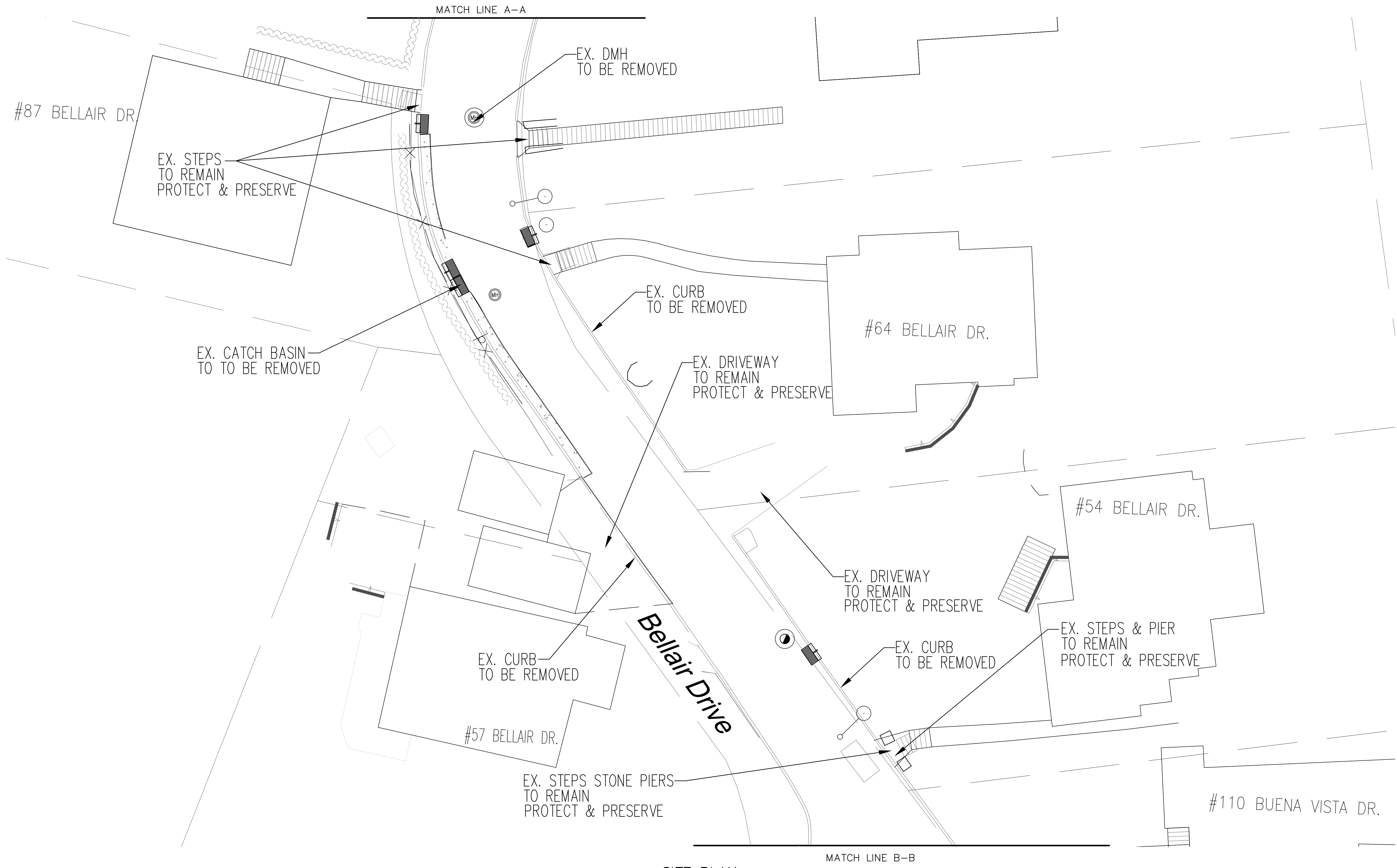


THIS PLAN IS NOT VALID FOR CONSTRUCTION
WITHOUT ENGINEERS SEAL & SIGNATURE

ANY ALTERATIONS OR REVISIONS OF THESE PLANS, UNLESS
DONE BY OR UNDER THE DIRECTION OF THE NYS LICENSED
AND REGISTERED ENGINEER THAT PREPARED THEM, IS A
VIOLATION OF THE NYS EDUCATION LAW.

Copyright © 2022

					DESIGNER/DRAFTER:	PF	ENGINEER: <div>AI Engineers, Inc. dolph rotfeld engineering division 570 TAXTER ROAD, ELMSFORD, NY 10523 (914) 631-8600</div>	<div></div>	PROJECT TITLE: BELLAIR DRIVE DRAINAGE IMPROVEMENTS	VILLAGE: VILLAGE OF DOBBS FERRY, NY	PROJECT NO. 33270C-4
				CHECKED BY:	JN	DRAWING NO. C-003					
				APPROVED BY:	AO	SHEET NO. 3 of 11					
REV.	DATE	REVISION DESCRIPTION		SHEET NO.	PLOTTED DATE: 6/13/22		FILENAME: BELLAIR DRIVE DRAINAGE 9-14-22.DWG			DRAWING TITLE: DEMOLITION PLAN	



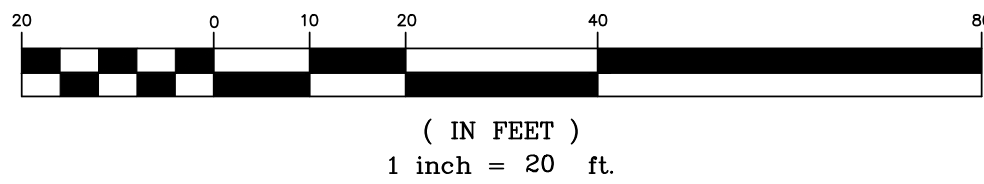
THIS PLAN IS NOT VALID FOR CONSTRUCTION
WITHOUT ENGINEERS SEAL & SIGNATURE


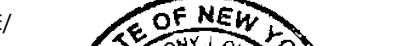
ANY ALTERATIONS OR REVISIONS OF THESE PLANS, UNLESS
DONE BY OR UNDER THE DIRECTION OF THE NYS LICENSED
AND REGISTERED ENGINEER THAT PREPARED THEM, IS A
VIOLATION OF THE NYS EDUCATION LAW.

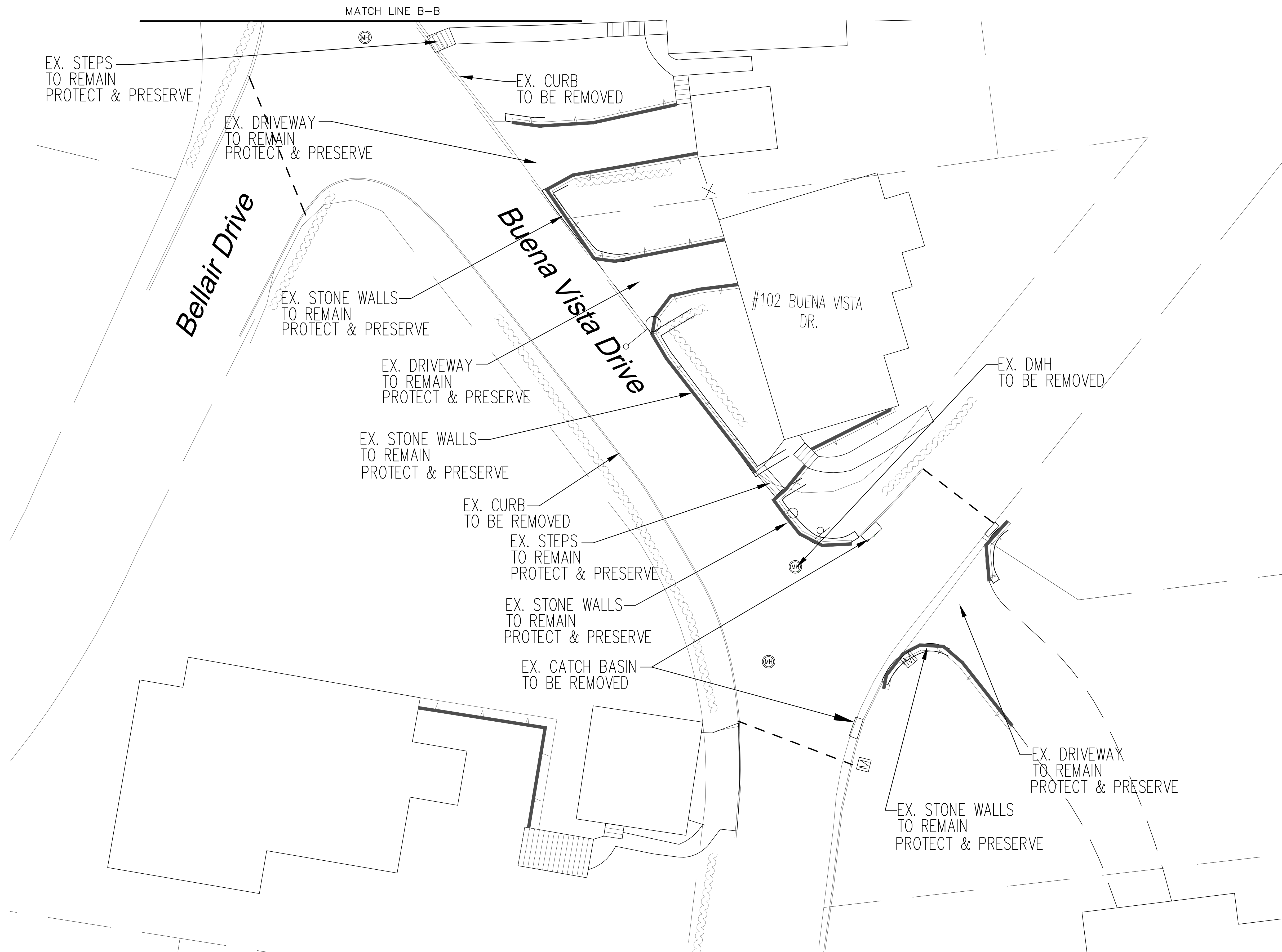
Copyright © 2022

SITE PLAN

GRAPHIC SCALE

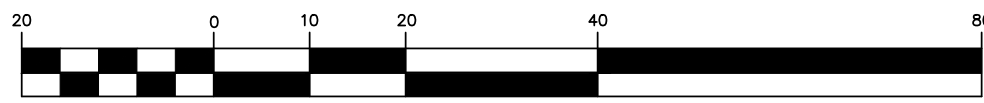


						DESIGNER/DRAFTER: pf		<div>ENGINEER:</div> <div> AI Engineers, Inc.</div> <div>dolph rotfeld engineering division</div> <div>570 TAXTER ROAD, ELMSFORD, NY 10523</div> <div>(914) 631-8600</div>		<div>SIGNATURE/ BLOCK:</div> <div></div>		<div>PROJECT TITLE:</div> <div>BELLAIR DRIVE DRAINAGE IMPROVEMENTS</div>		VILLAGE: VILLAGE OF DOBBS FERRY, NY		PROJECT NO. 33270C-4	
				DRAWING NO. C-004													
				DRAWING TITLE: DEMOLITION PLAN		SHEET NO. 4 of 11											
REV.	DATE	REVISION DESCRIPTION				SHEET NO.	PLOTTED DATE: 6/13/22		FILENAME: BELLAIR DRIVE DRAINAGE 9-14-22.DWG								



SITE PLAN

GRAPHIC SCALE



(IN FEET)
1 inch = 20 ft.

THIS PLAN IS NOT VALID FOR CONSTRUCTION
WITHOUT ENGINEERS SEAL & SIGNATURE

ANY ALTERATIONS OR REVISIONS OF THESE PLANS, UNLESS
DONE BY OR UNDER THE DIRECTION OF THE NYS LICENSED
AND REGISTERED ENGINEER THAT PREPARED THEM, IS A
VIOLATION OF THE NYS EDUCATION LAW.

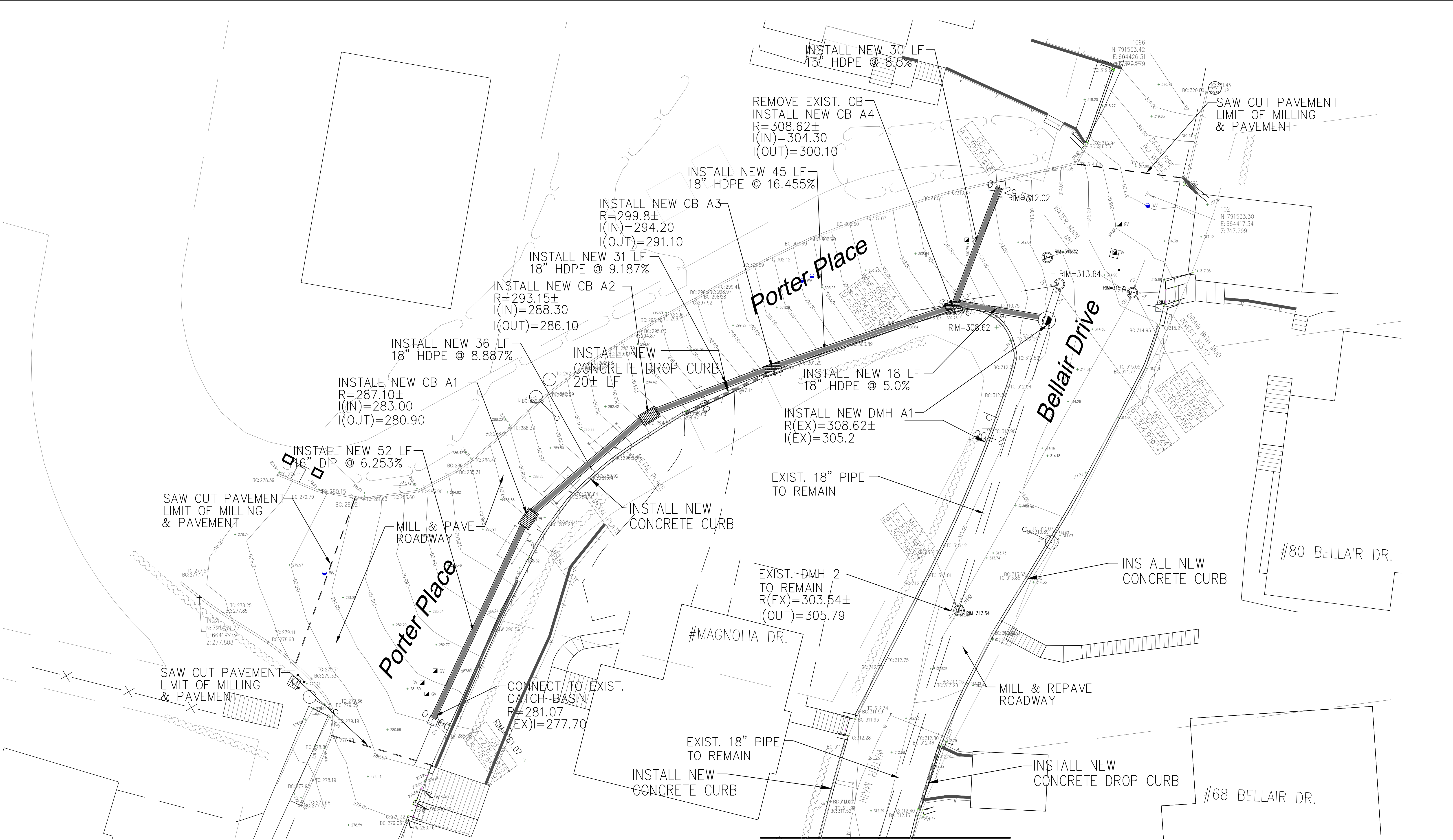
Copyright © 2022

					DESIGNER/DRAFTER: pf	ENGINEER:		PROJECT TITLE:	VILLAGE:	PROJECT NO.
					CHECKED BY: JN			BELLAIR DRIVE DRAINAGE IMPROVEMENTS	VILLAGE OF DOBBS FERRY, NY	33270C-4
					APPROVED BY: AO				DRAWING TITLE:	DRAWING NO.
									DEMOLITION PLAN	C-005
REV.	DATE	REVISION DESCRIPTION	SHEET NO.	PLOTTED DATE: 6/13/22		FILENAME: BELLAIR DRIVE DRAINAGE 9-14-22.DWG				SHEET NO.
										5 of 11



dolph rotfeld engineering division
570 TAXTER ROAD, ELMSFORD, NY 10523
(914) 631-8600





THIS PLAN IS NOT VALID FOR CONSTRUCTION
WITHOUT ENGINEERS SEAL & SIGNATURE

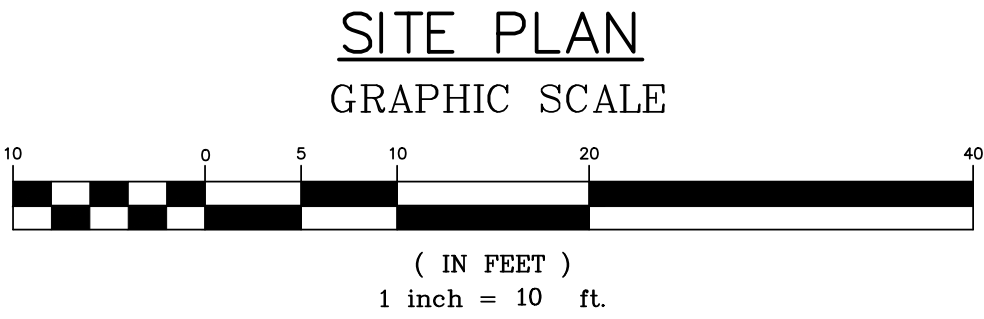
NOTE: INSTALL SILT SACKS IN ALL EXISTING
AND PROPOSED CATCH BASINS A.O.B.E.

Copyright © 2022

ANY ALTERATIONS OR REVISIONS OF THESE PLANS, UNLESS
DONE BY OR UNDER THE DIRECTION OF THE NYS LICENSED
AND REGISTERED ENGINEER THAT PREPARED THEM, IS A
VIOLATION OF THE NYS EDUCATION LAW.

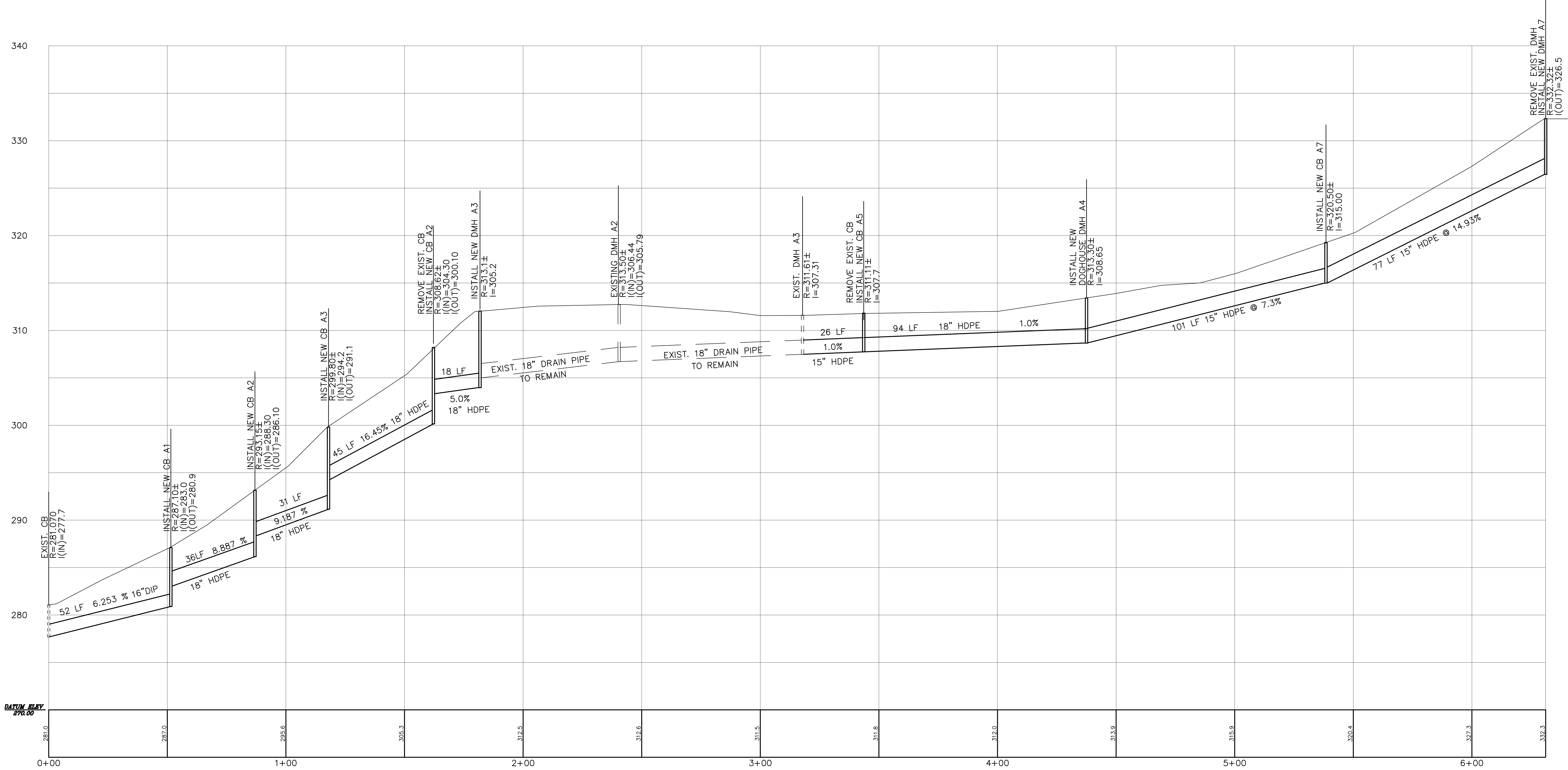
REV.	DATE	REVISION DESCRIPTION	SHEET NO.	PLOTTED DATE: 6/13/22

DESIGNER/DRAFTER: pf	ENGINEER: <div>AI Engineers, INC. dolph rotfeld engineering division 570 TAXTER ROAD, ELMSFORD, NY 10523 (914) 631-8600</div>	SIGNATURE/ BLOCK: <div>STATE OF NEW YORK ANTHONY J. QUINN REGISTERED PROFESSIONAL ENGINEER</div>
CHECKED BY: JN	PROJECT TITLE: BELLAIR DRIVE DRAINAGE IMPROVEMENTS	VILLAGE: VILLAGE OF DOBBS FERRY, NY
APPROVED BY: AO	DRAWING TITLE: SITE PLAN	PROJECT NO. 33270C-4
FILENAME: BELLAIR DRIVE DRAINAGE 9-14-22.DWG		DRAWING NO. C-006
		SHEET NO. 6 of 11



SITE PLAN
GRAPHIC SCALE

Copyright © 2022




DRAINAGE PROFILE

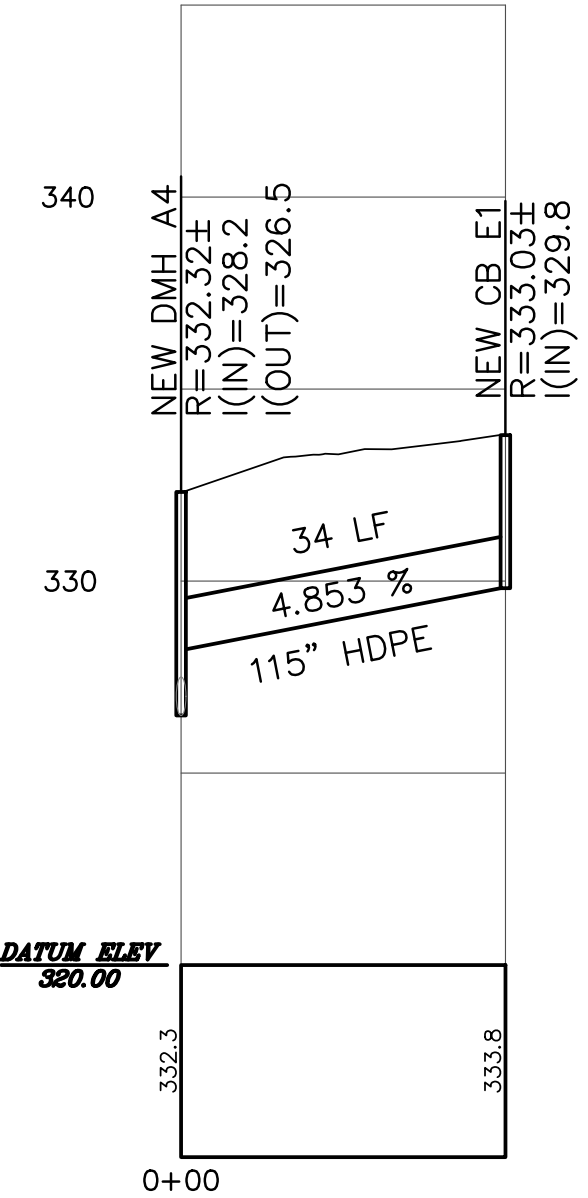
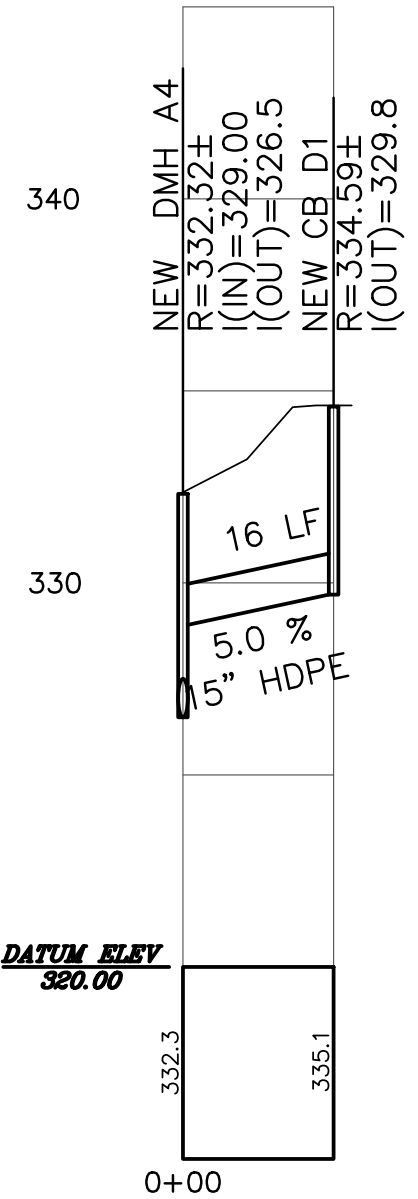
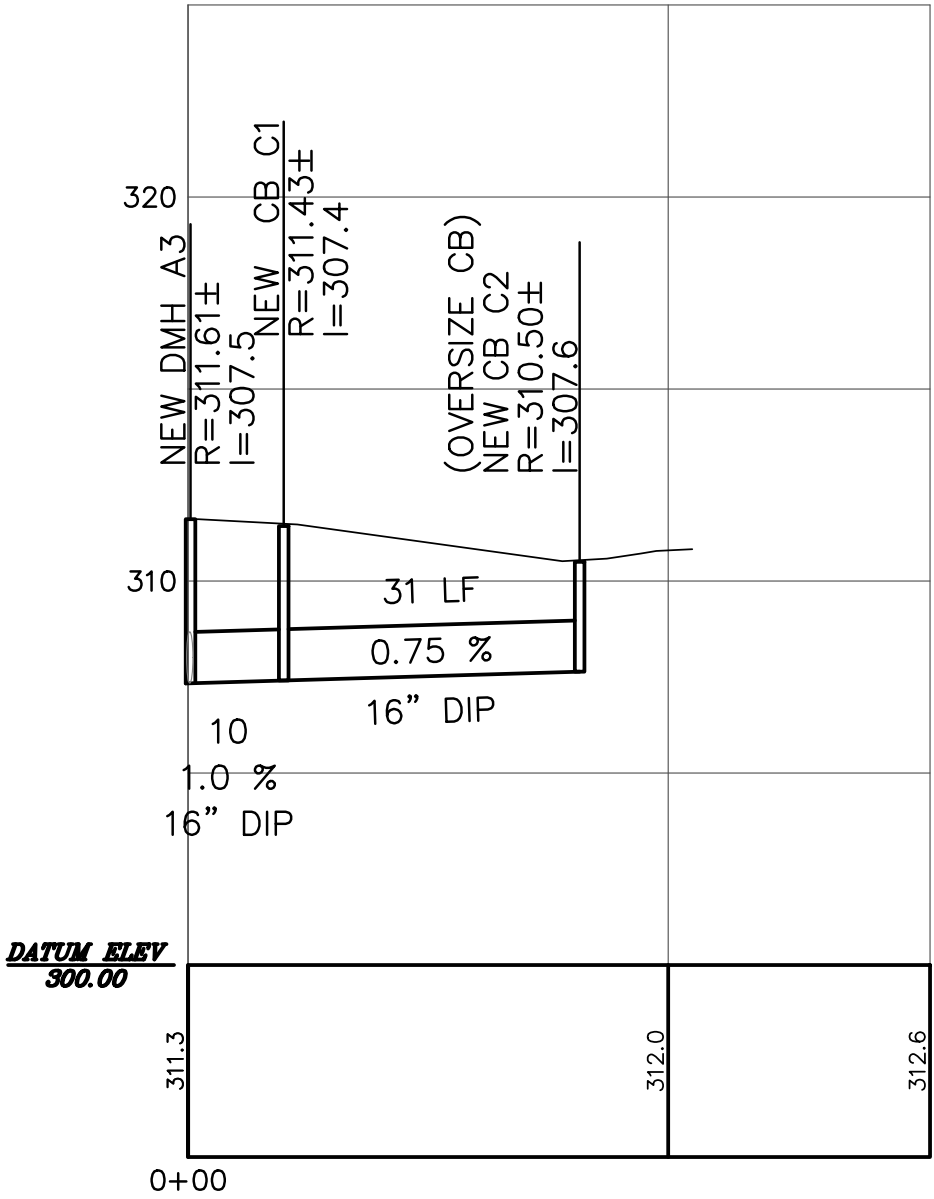
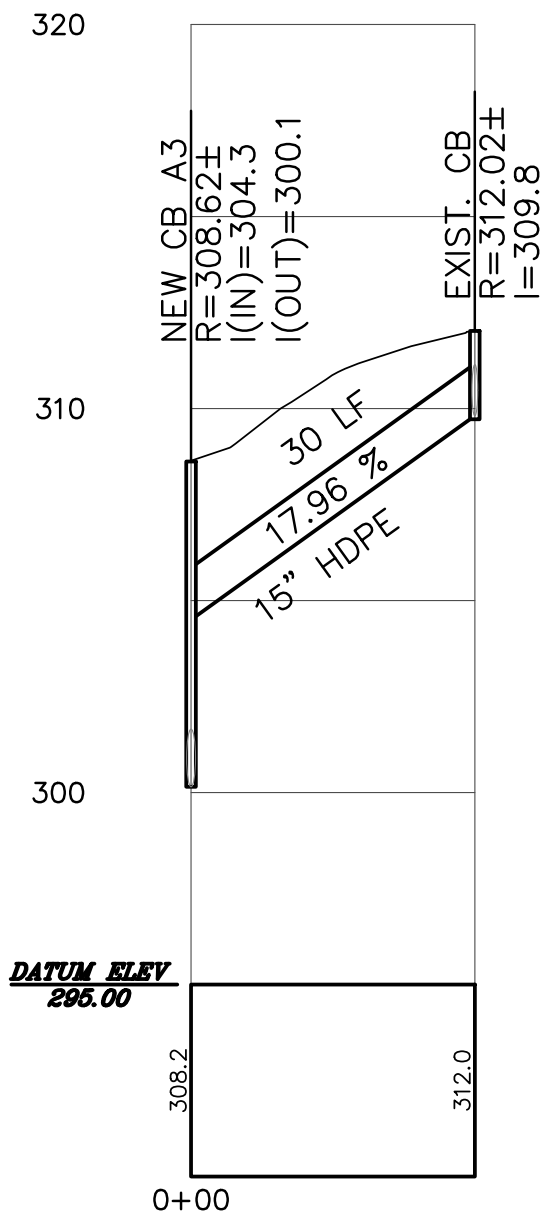
SCALE HORIZ. 1"=20'
VERT. 1"=5'

THIS PLAN IS NOT VALID FOR CONSTRUCTION
WITHOUT ENGINEERS SEAL & SIGNATURE

ANY ALTERATIONS OR REVISIONS OF THESE PLANS, UNLESS
DONE BY OR UNDER THE DIRECTION OF THE NYS LICENSED
AND REGISTERED ENGINEER THAT PREPARED THEM, IS A
VIOLATION OF THE NYS EDUCATION LAW.

Copyright © 2022

					DESIGNER/DRAFTER:	pf	<div>ENGINEER:</div> <div><div>AI Engineers, INC.</div><div>dolph retfeld engineering division</div><div>570 TAXTER ROAD, ELMSFORD, NY 10523</div><div>(914) 631-8600</div></div> <div>FILENAME: BELLAIR DRIVE DRAINAGE 9-14-22.DWG</div>	<div>SIGNATURE/ BLOCK:</div> <div></div>	PROJECT TITLE: <div>BELLAIR DRIVE DRAINAGE IMPROVEMENTS</div>	VILLAGE:	VILLAGE OF DOBBS FERRY, NY	PROJECT NO.	33270C-4
				CHECKED BY:	JN	DRAWING NO.				C-009			
				APPROVED BY:	AO	SHEET NO.				9 of 11			
REV.	DATE	REVISION DESCRIPTION	SHEET NO.	PLOTTED DATE:	6/13/22								





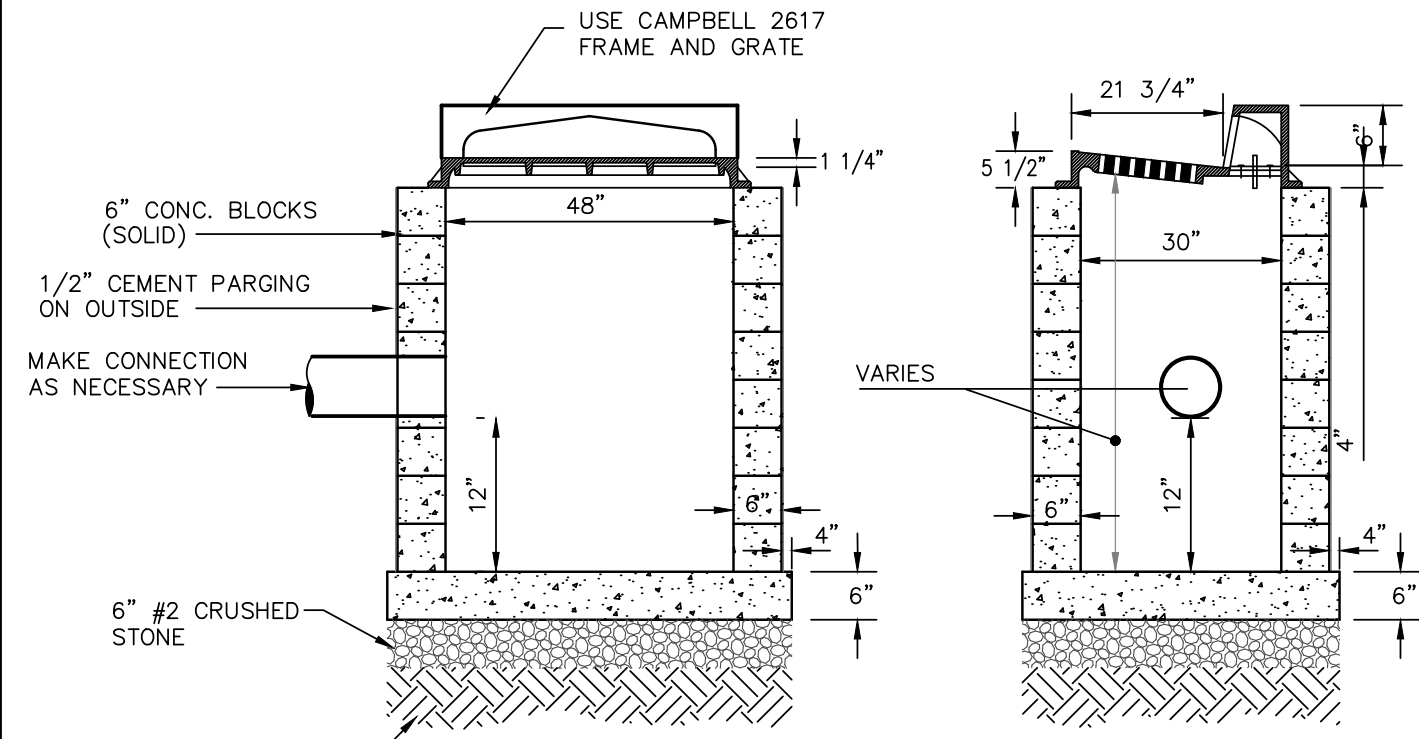
DRAINAGE PROFILE
SCALE HORIZ. 1"=20'
VERT. 1"=5'

THIS PLAN IS NOT VALID FOR CONSTRUCTION
WITHOUT ENGINEERS SEAL & SIGNATURE

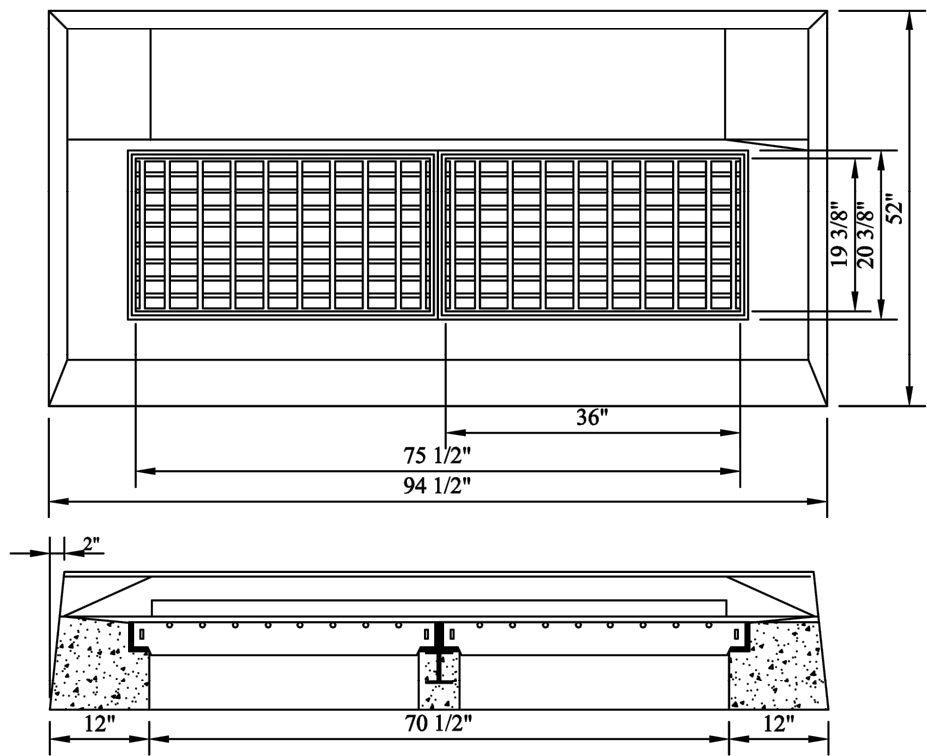
ANY ALTERATIONS OR REVISIONS OF THESE PLANS, UNLESS
DONE BY OR UNDER THE DIRECTION OF THE NYS LICENSED
AND REGISTERED ENGINEER THAT PREPARED THEM, IS A
VIOLATION OF THE NYS EDUCATION LAW.

Copyright © 2022

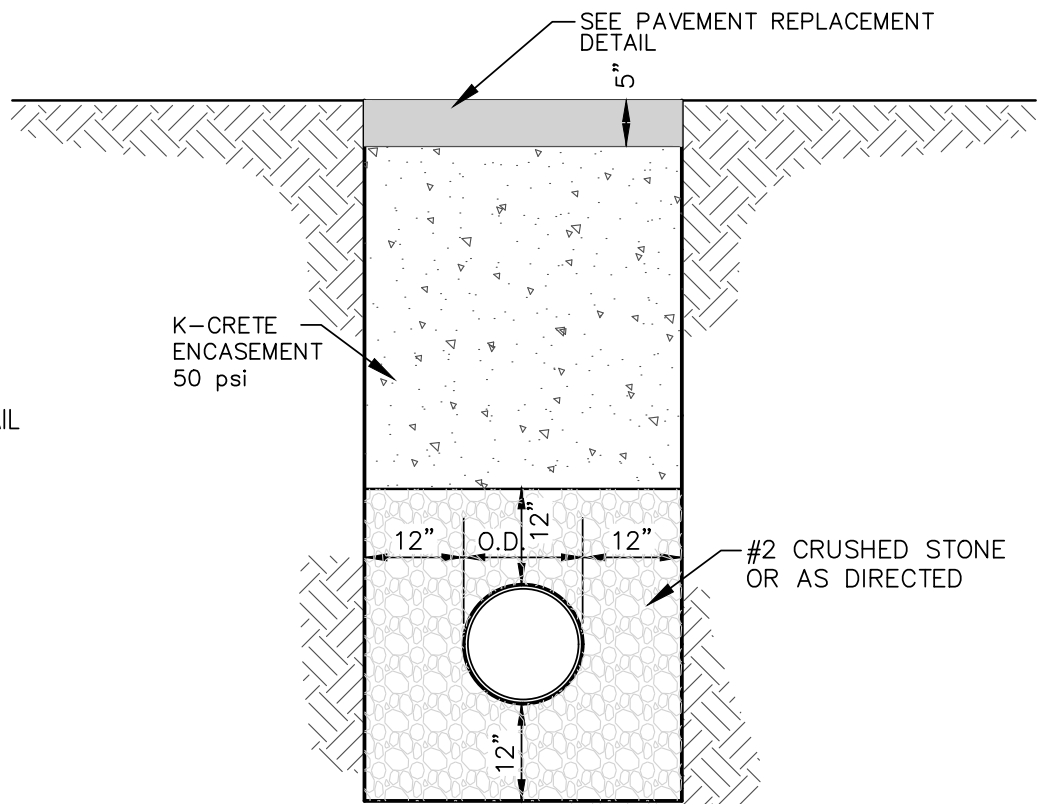
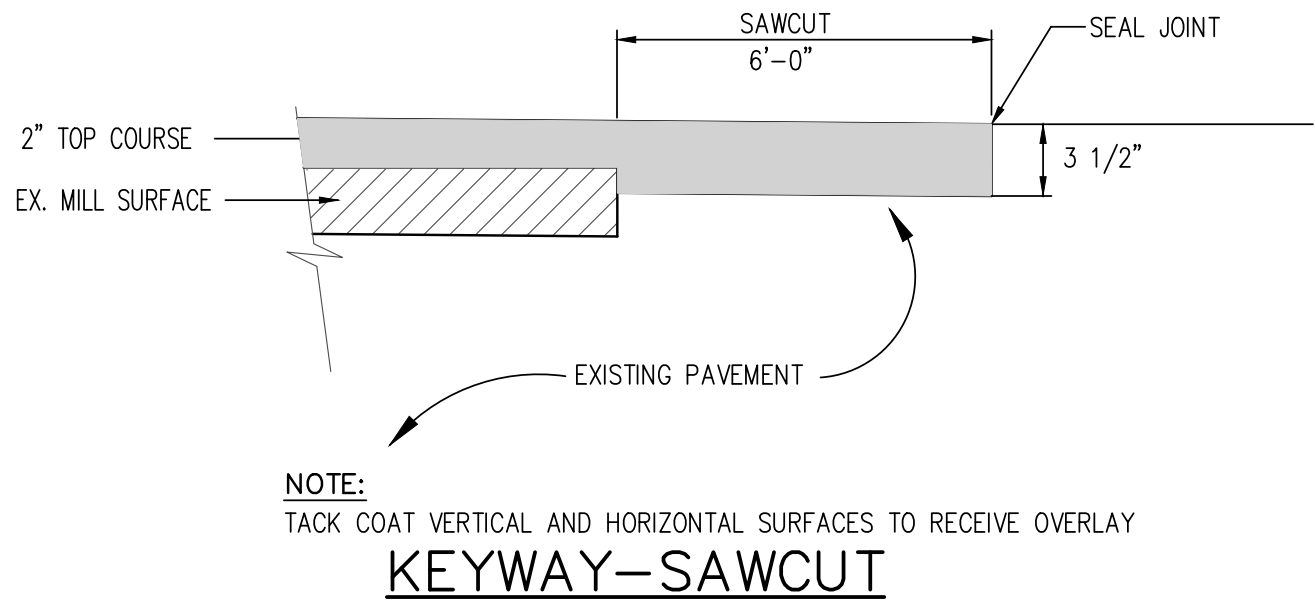
					DESIGNER/DRAFTER:	PF	<div>ENGINEER:</div> <div><div>AI Engineers, INC.</div><div>dolph rotfeld engineering division</div><div>570 TAXTER ROAD, ELMSFORD, NY 10523</div><div>(914) 631-8600</div></div> <div>FILENAME: BELLAIR DRIVE DRAINAGE 9-14-22.DWG</div>	<div>SIGNATURE/ BLOCK:</div> <div></div>	PROJECT TITLE: <div>BELLAIR DRIVE DRAINAGE IMPROVEMENTS</div>	VILLAGE:	VILLAGE OF DOBBS FERRY, NY	PROJECT NO.	33270C-4
				CHECKED BY:	JN	DRAWING NO.				C-010			
				APPROVED BY:	AO	SHEET NO.				10 of 11			
REV.	DATE	REVISION DESCRIPTION	SHEET NO.	PLOTTED DATE: 6/13/22									



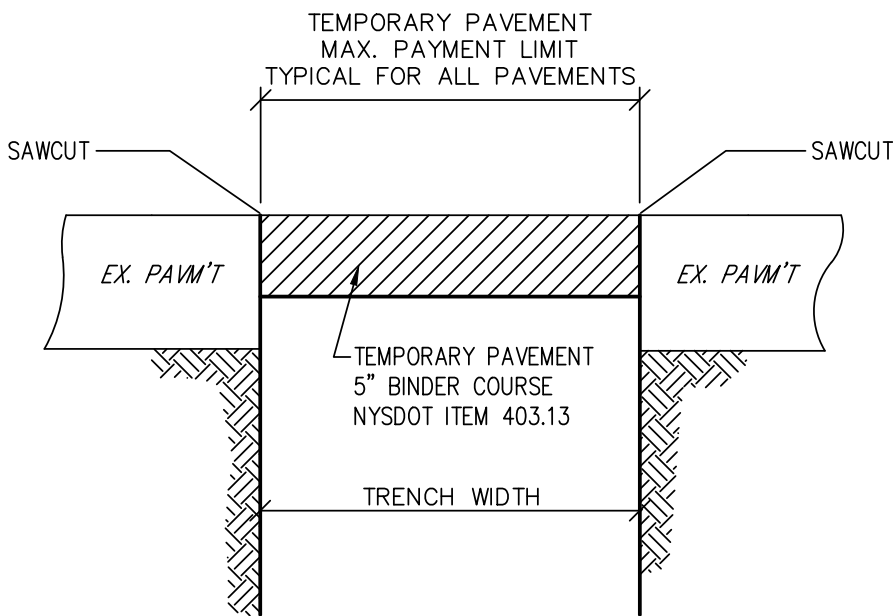
CONCRETE BLOCK CATCH BASIN



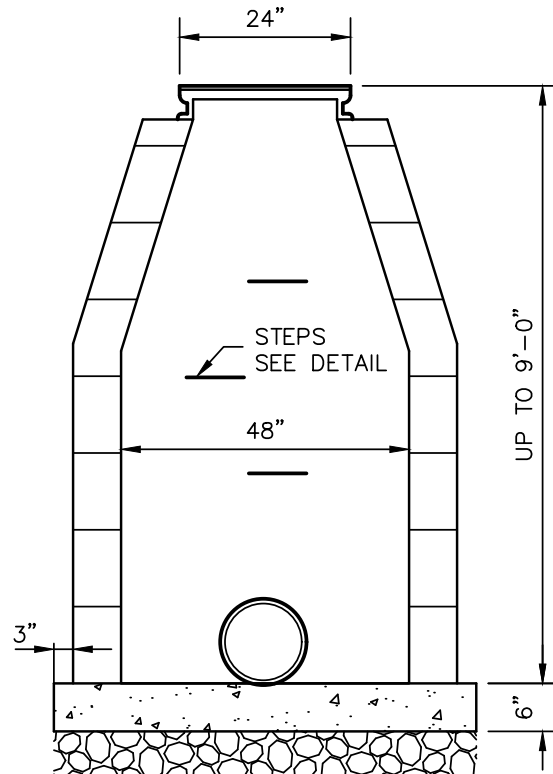
FRONT VIEW



TRENCH BEDDING (ALL PIPES)



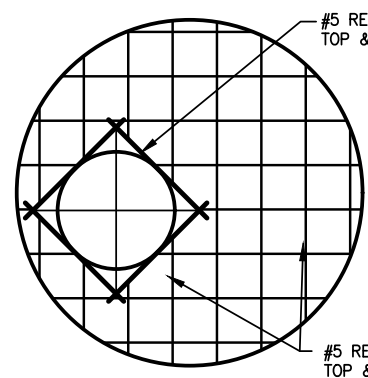
TEMPORARY PAVEMENT (ROADWAY)



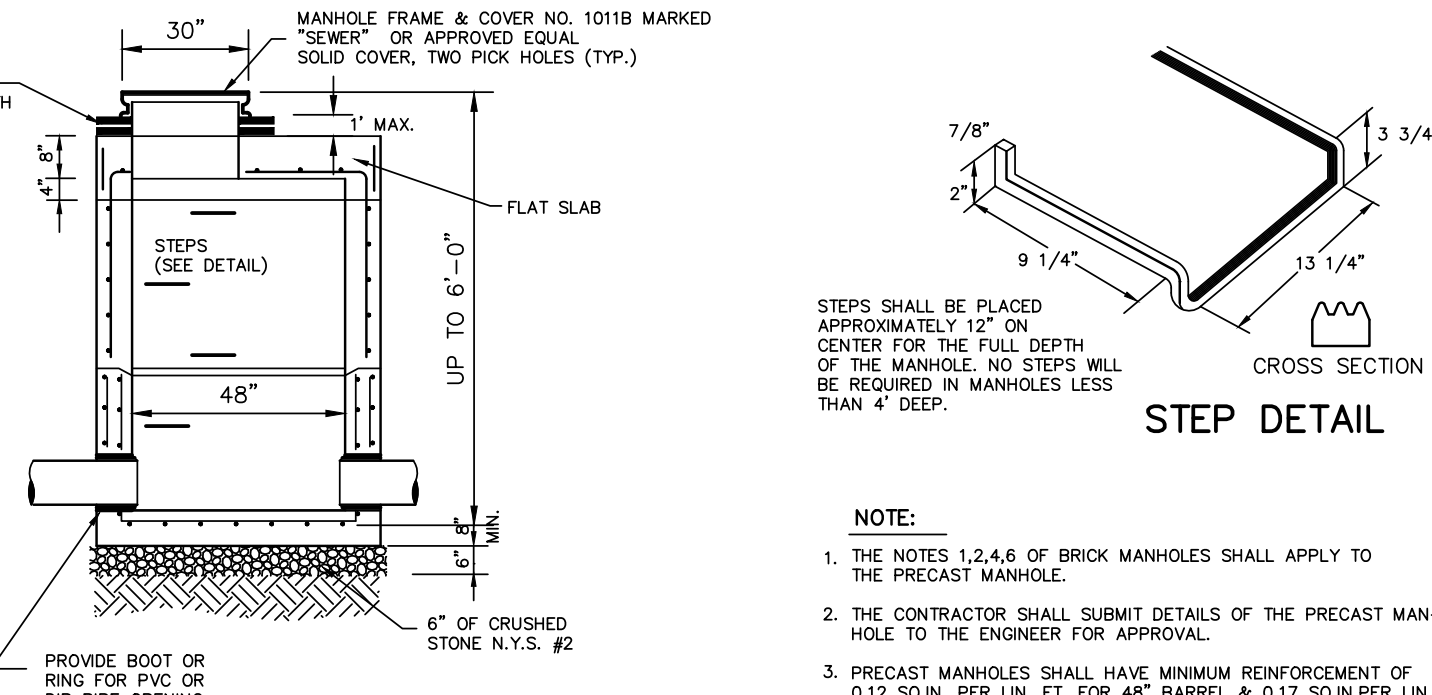
NOTES:

- MANHOLES SHALL BE MADE OF 8" BRICK, 6" SOLID CONCRETE MH. BLOCKS, OR PRECAST
- MANHOLE FRAME & COVERS TO BE CAMPBELL PATTERN #1009 FOR 24" OPENINGS OR APPROVED EQUAL. MH. COVERS TO BE MARKED "SEWER" AND TO HAVE SIX 3/4" Ø HOLE VENTS. (USE SOLID COVERS WHERE NECESSARY.)
- EXTERIOR & INTERIOR OF ALL MANHOLES SHALL HAVE A 1/2" CEMENT PLASTER FINISH. THE EXTERIOR SHALL ALSO BE COVERED WITH AN APPROVED ASPHLT WATERPROOFING.
- A MANHOLE WATERSTOP SHALL BE INSTALLED WHERE THE PIPE ENTERS INTO AN EXISTING OR BLOCK MANHOLE, AS APPROVED BY THE TOWN ENGINEER.

BRICK OR BLOCK MANHOLE

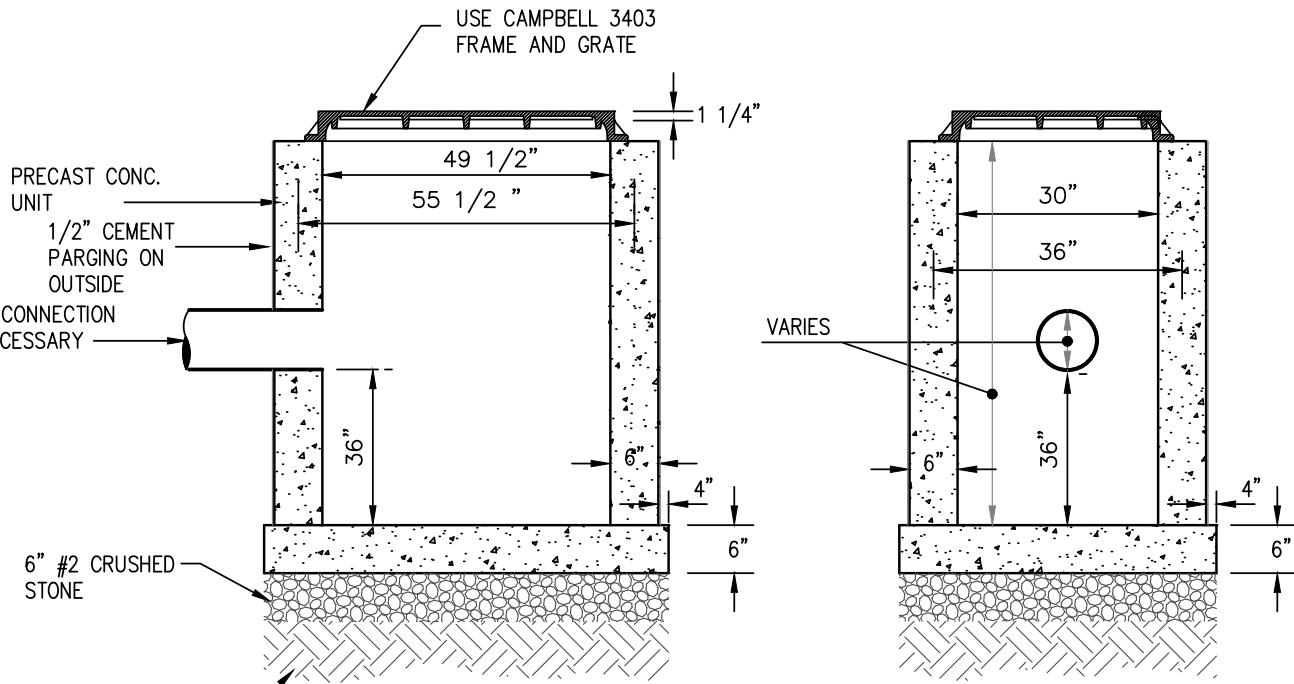


PRECAST CONCRETE MANHOLE (FLAT SLAB)

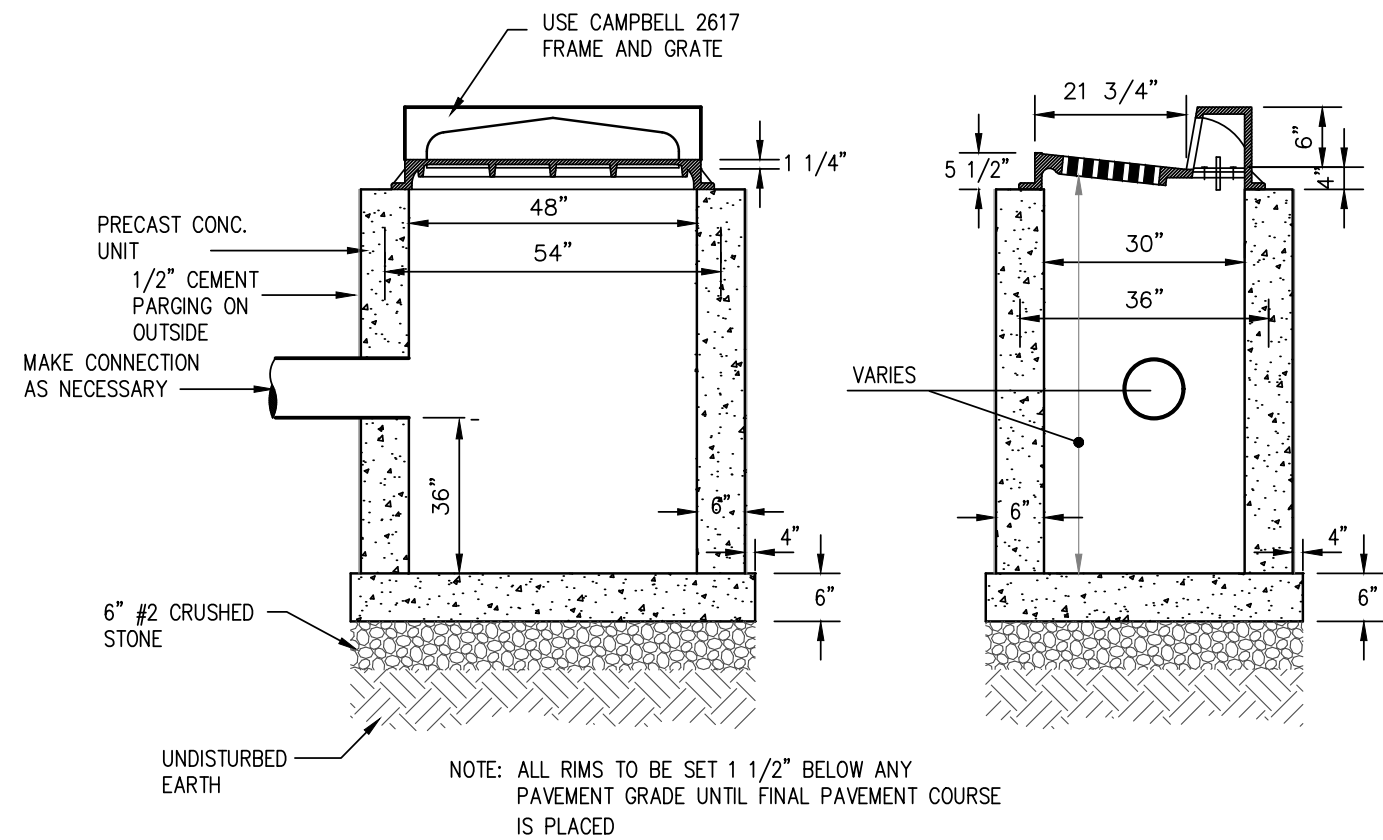


NOTE:

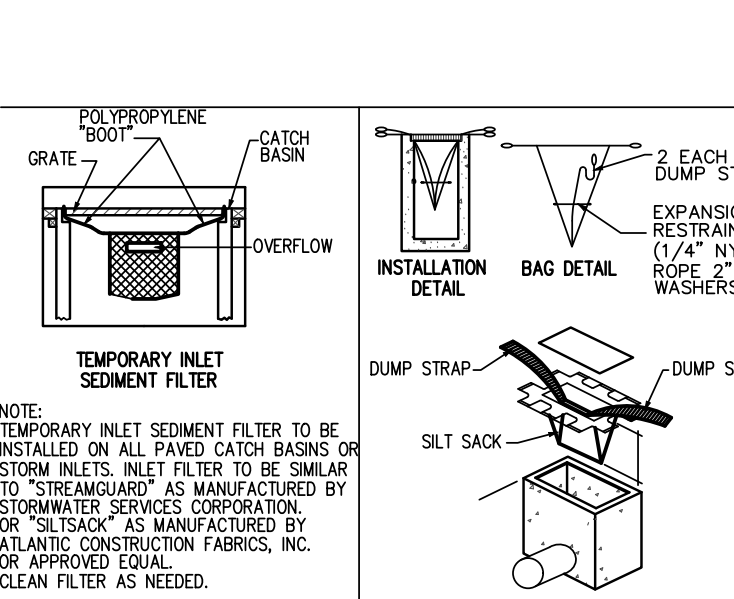
- THE NOTES 1,2,4,6 OF BRICK MANHOLES SHALL APPLY TO THE PRECAST MANHOLE.
- THE CONTRACTOR SHALL SUBMIT DETAILS OF THE PRECAST MANHOLE TO THE ENGINEER FOR APPROVAL.
- PRECAST MANHOLES SHALL HAVE MINIMUM REINFORCEMENT OF 0.12 SQIN. PER LIN. FT. FOR 48" BARREL & 0.17 SQIN. PER LIN. FT. FOR 60" BARREL & AS PER A.S.T.M. C-475.
- THE CONTRACTOR MAY WITH THE APPROVAL OF THE ENGINEER SUBSTITUTE A BUILT UP BASE SECTION CONSISTING OF 6" CONCRETE BLOCK WALLS & 6" MIN. THICKNESS CONCRETE SLAB(1:2.4 MAX.) FOR A PRECAST BASE SECTION.
- PRECAST BASE SECTION TO HAVE THE REQUIRED NUMBER OF GASKETS AND OPENINGS AS SHOWN AND SPECIFIED.
- PAVEMENT LIMITS LINES FOR ROCK EXCAVATION SHALL BE 1'-0" OUTSIDE THE WIDEST PART OF THE STRUCTURE.
- PRECAST MANHOLE SECTIONS SHALL EMPLOY A WATER TIGHT GASKET ARRANGEMENT BETWEEN EACH SECTION APPROVED BY THE ENGINEER.
- GASKETS OR COLLARS FOR PIPE CONNECTIONS TO MANHOLES SHALL BE WATER TIGHT AND COMPATIBLE WITH THE TYPE OF PIPE BEING USED.
- THE LENGTH OF PIPES ENTERING OR LEAVING ANY MANHOLE SHALL BE GREATER THAN 2'-0" BUT LESS THAN 6'-0"
- PRECAST MANHOLES UNDER 6'0" SHALL HAVE "FLAT TOP" SLAB ROOF.
- GASKETS OR COLLARS FOR PIPE CONNECTIONS TO MANHOLE SHALL PROVIDE A MIN. OF 0.1" SLOPE ACROSS THE MANHOLE.
- THE LEAKAGE OUTWARD OR THE INFILTRATION SHALL NOT EXCEED ONE HUNDRED(100) GALLONS PER INCH OF SEWER PIPE DIAMETER PER MILE PER DAY FOR ANY SECTION OF THE SEWERAGE SYSTEM AND MANHOLES.



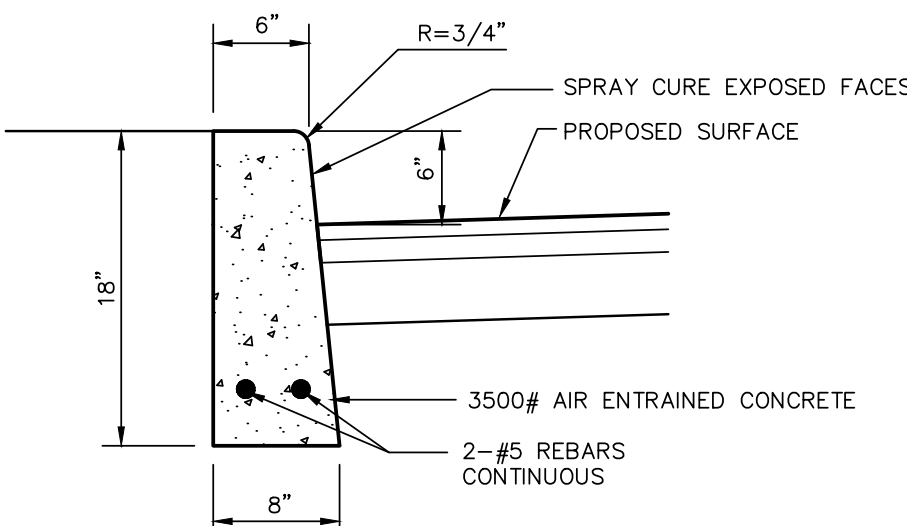
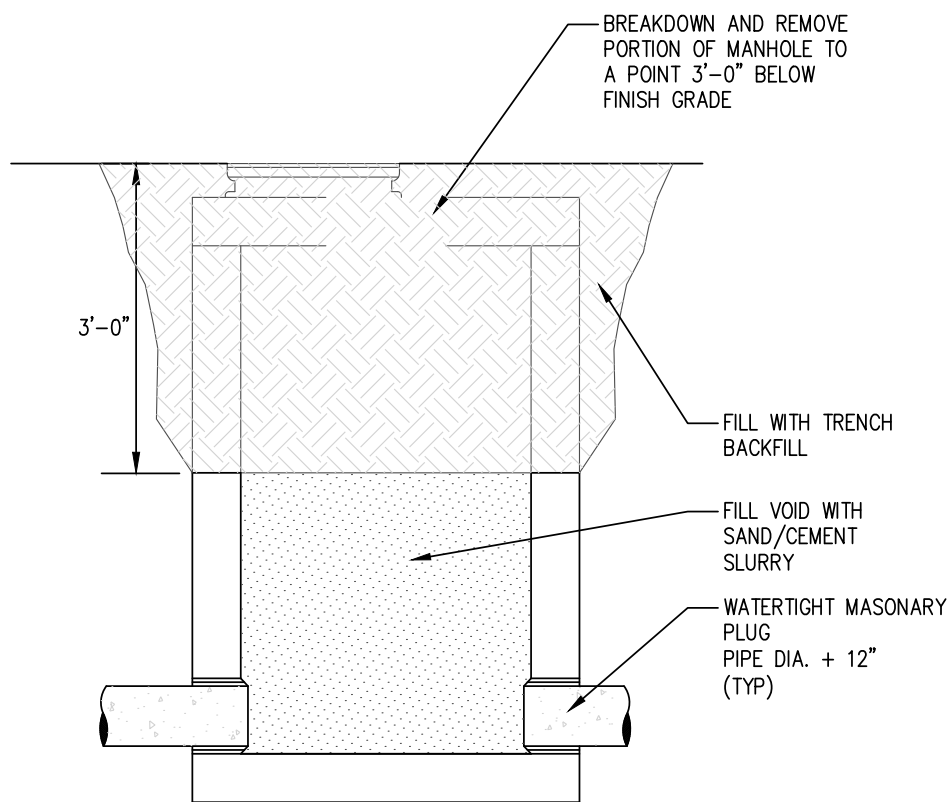
PRECAST CONCRETE CATCH BASIN WITHOUT CURB BOX



PRECAST CONCRETE CATCH BASIN WITH CURB BOX



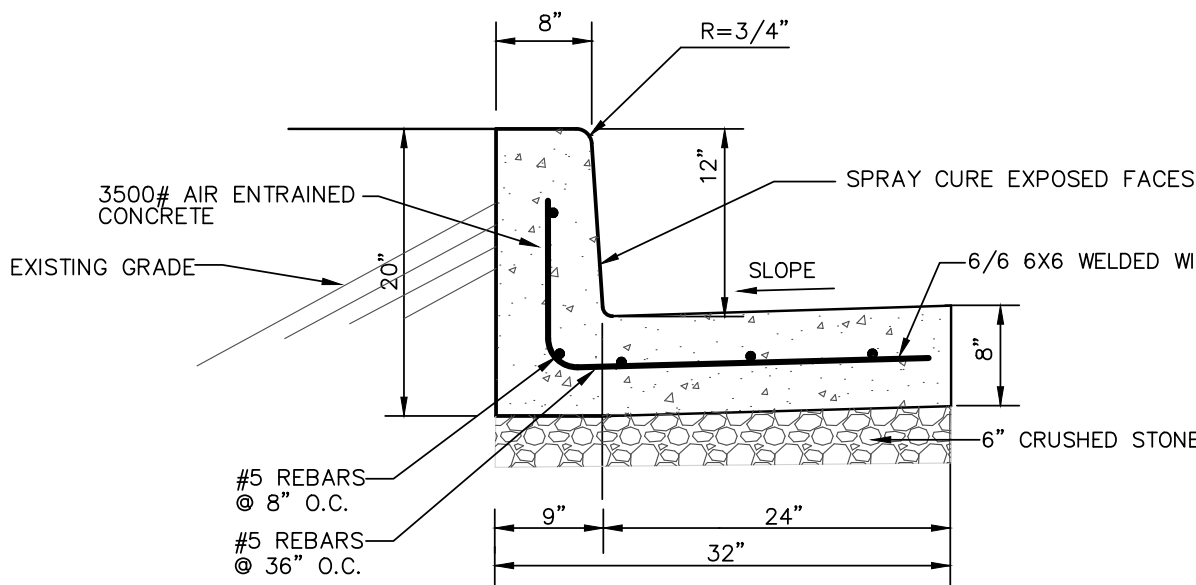
SILT SACK



NOTE:

EXPANSION JOINTS TO BE INSTALLED EVERY 10 FEET.

CONCRETE CURB



12" REVEAL CONCRETE CURB

CONTRACTOR TO SUBMIT SHOP DRAWINGS FOR ENGINEER'S APPROVAL

THIS PLAN IS NOT VALID FOR CONSTRUCTION WITHOUT ENGINEERS SEAL & SIGNATURE

ANY ALTERATIONS OR REVISIONS OF THESE PLANS, UNLESS DONE BY OR UNDER THE DIRECTION OF THE NYS LICENSED AND REGISTERED ENGINEER THAT PREPARED THEM, IS A VIOLATION OF THE NYS EDUCATION LAW.

Copyright © 2022

					DESIGNER/DRAFTER: pf	ENGINEER: AI Engineers, INC. dolph retfeld engineering division 570 TAXTER ROAD, ELMSFORD, NY 10523 (914) 631-8600	SIGNATURE/ BLOCK: [Signature]	PROJECT TITLE: BELLAIR DRIVE DRAINAGE IMPROVEMENTS	VILLAGE: VILLAGE OF DOBBS FERRY, NY	PROJECT NO. 33270C-4
					CHECKED BY: JN					DRAWING NO. C-011
					APPROVED BY: AO				DRAWING TITLE: DETAILS AND NOTES	SHEET NO. 11 of 11
REV.	DATE	REVISION DESCRIPTION	SHEET NO.	PLOTTED DATE: 6/13/22	FILENAME: BELLAIR DRIVE DRAINAGE 9-14-22.DWG					