

---

### Exterior Signs

Dobbs Ferry, NY • Job# 52776 • March 12, 2020

---



60 Westfield Drive  
Plantsville, CT 06479  
860.229.1812



Project Address:  
Dobbs Ferry, NY

SPI WO #:52776  
Issue Date: March 12, 2020

Salesperson: Pete Rappoccio  
Designer: JM

DRAWINGS ARE NOT TO SCALE  
UNLESS OTHERWISE NOTED

SPI Revisions:

Bottom of sign is 14'6" above grade.



Photo rendering is only conceptual. Actual size ratio and color may differ slightly from finished sign.

Customer Approval: ☐ APPROVED ☐ APPROVED AS NOTED ☐ REVISE & RESUBMIT

PRINT

SIGN

DATE

© COPYRIGHT 2020. BY SIGN PRO INC. ALL DESIGNS PRESENTED ARE THE SOLE PROPERTY OF SIGN PRO INC. AND MAY NOT BE REPRODUCED IN PART OR WHOLE WITHOUT WRITTEN PERMISSION FROM SIGN PRO INC.

**SIGN PRO**  
signpro-usa.com

60 Westfield Drive  
Plantsville, CT 06479  
860.229.1812



SIGN TYPE  
**Channel Letters**

PAGE  
**2 of 9**



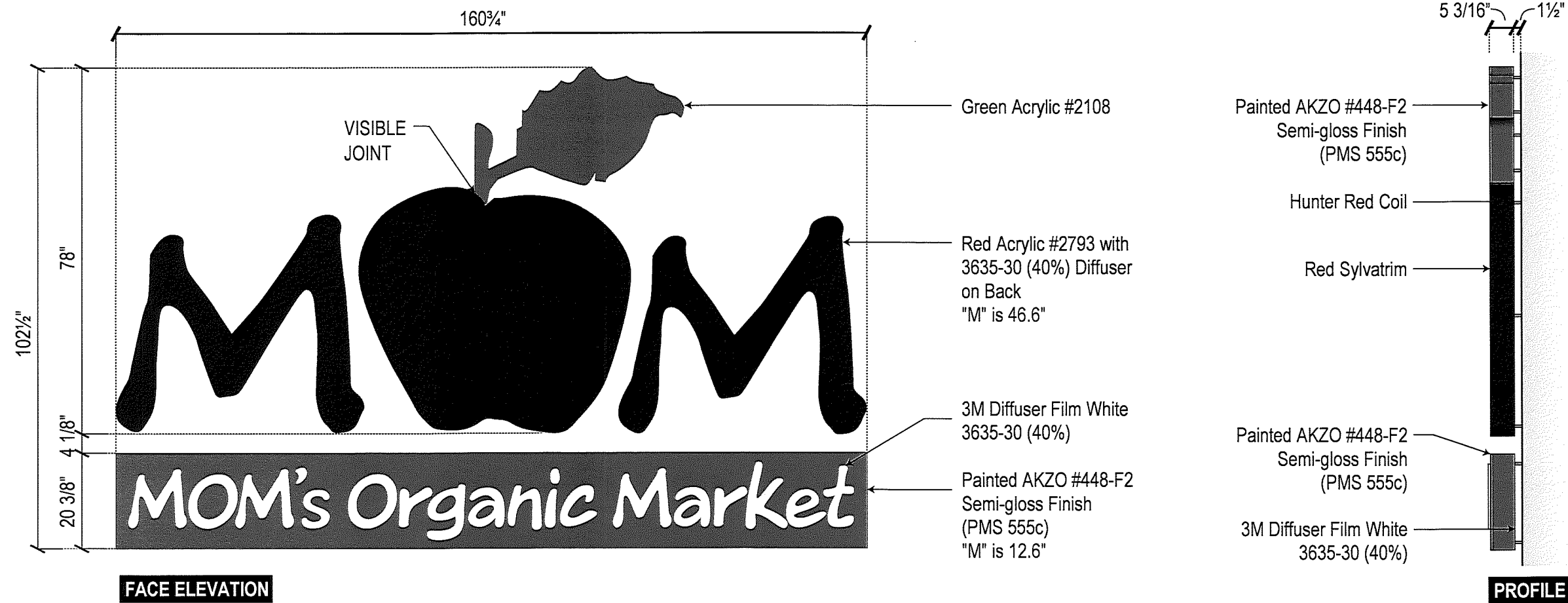
Project Address:  
Dobbs Ferry, NY

SPI WO #:52776  
Issue Date: March 12, 2020

Salesperson: Pete Rappoccio  
Designer: JM

DRAWINGS ARE NOT TO SCALE  
UNLESS OTHERWISE NOTED

SPI Revisions:



Customer Approval: ☐ APPROVED ☐ APPROVED AS NOTED ☐ REVISE & RESUBMIT

PRINT

SIGN

DATE

© COPYRIGHT 2020, BY SIGN PRO INC. ALL DESIGNS PRESENTED ARE THE SOLE PROPERTY OF SIGN PRO INC. AND MAY NOT BE REPRODUCED IN PART OR WHOLE WITHOUT WRITTEN PERMISSION FROM SIGN PRO INC.

**SIGN PRO**  
signpro-usa.com

60 Westfield Drive  
Plantville, CT 06479  
860.229.1812



SIGN TYPE

Channel Letters

PAGE

3 of 8



Project Address:  
Dobbs Ferry, NY

SPI WO #:52776

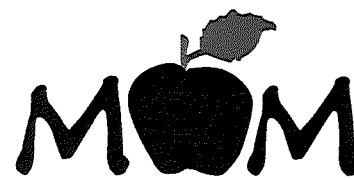
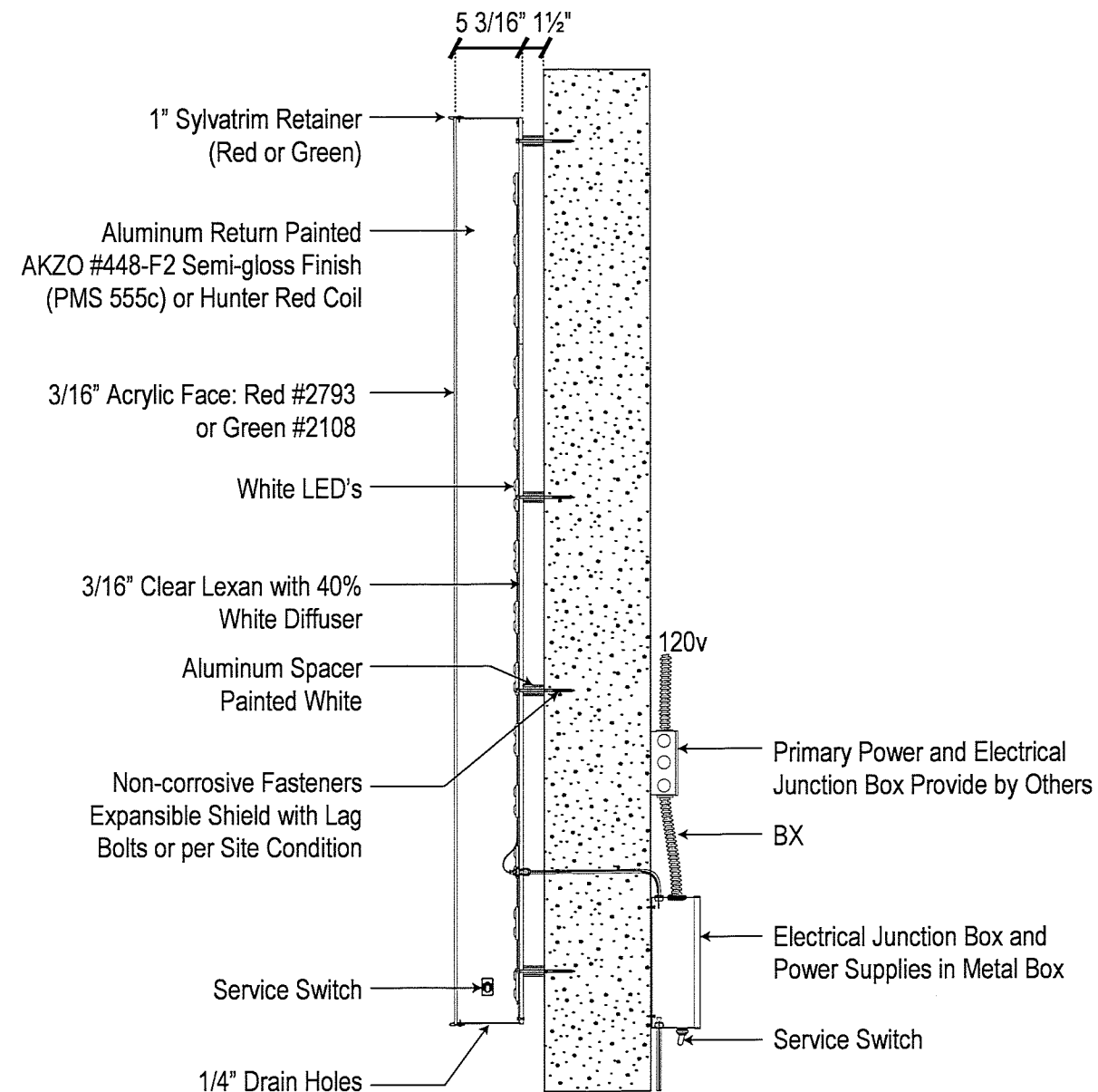
Issue Date: March 12, 2020

Salesperson: Pete Rappoccio

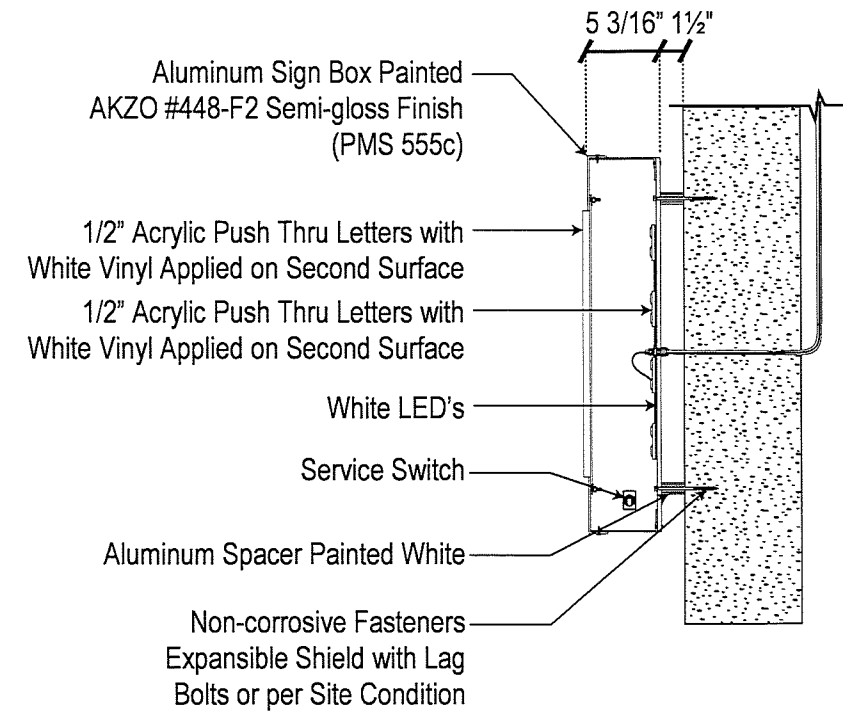
Designer: JM

DRAWINGS ARE NOT TO SCALE  
UNLESS OTHERWISE NOTED

SPI Revisions:



CROSS SECTION



MOM's Organic Market

CROSS SECTION

Customer Approval: ☐ APPROVED ☐ APPROVED AS NOTED ☐ REVISE & RESUBMIT

PRINT

SIGN

DATE

© COPYRIGHT 2020, BY SIGN PRO INC. ALL DESIGNS PRESENTED ARE THE SOLE PROPERTY OF SIGN PRO INC. AND MAY NOT BE REPRODUCED IN PART OR WHOLE WITHOUT WRITTEN PERMISSION FROM SIGN PRO INC.

**SIGN PRO**  
signpro-usa.com

60 Westfield Drive  
Plantsville, CT 06479  
860.229.1812



SIGN TYPE

Channel Letters

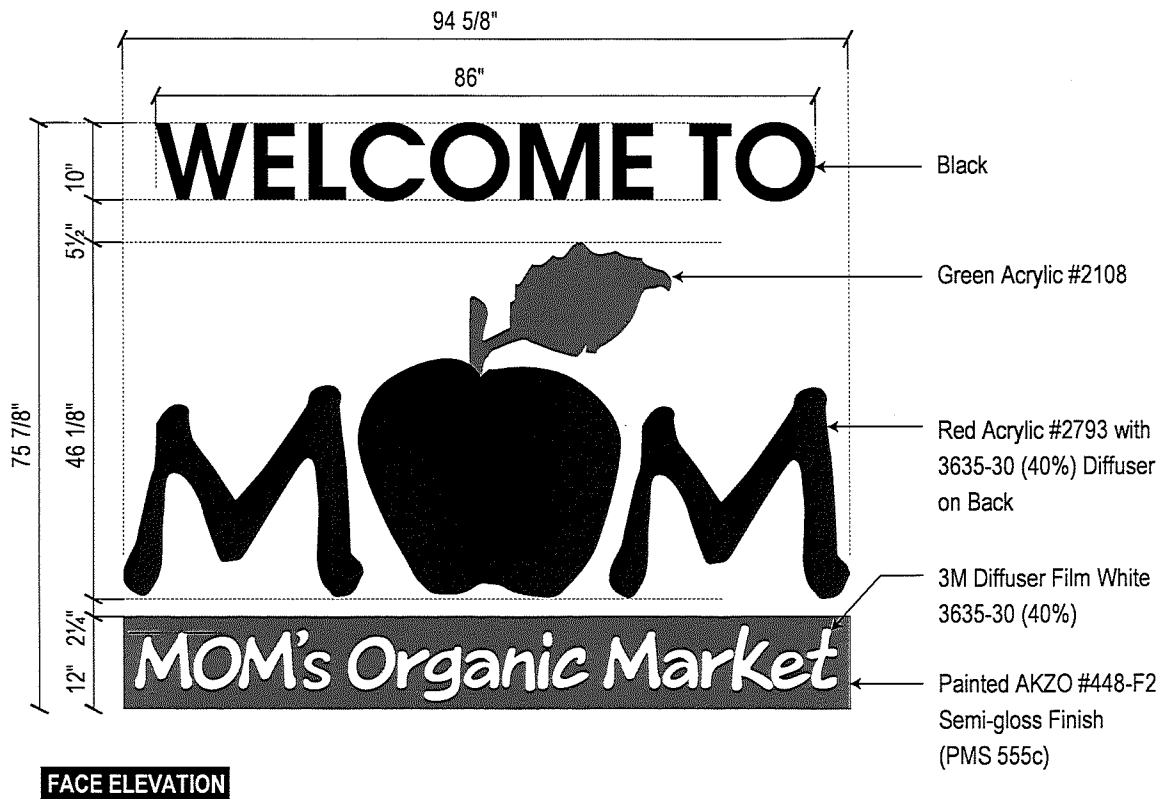
PAGE

4 of 8

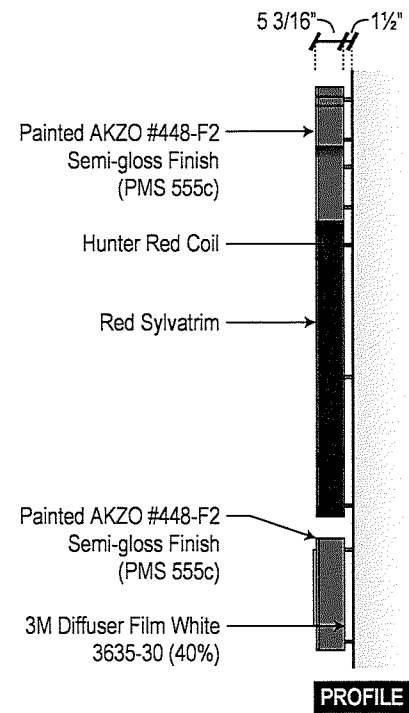


Photo rendering is only conceptual.  
Actual size ratio and color may differ slightly from finished sign.

Top of sign is 8' above grade.  
Bottom of sign is 20 1/8" above grade.



FACE ELEVATION



PROFILE



Project Address:  
Dobbs Ferry, NY

SPI WO #:52776  
Issue Date: March 12, 2020

Salesperson: Pete Rappoccio  
Designer: JM

DRAWINGS ARE NOT TO SCALE  
UNLESS OTHERWISE NOTED

SPI Revisions:

Customer Approval: ☐ APPROVED ☐ APPROVED AS NOTED ☐ REVISE & RESUBMIT

PRINT

SIGN

DATE

© COPYRIGHT 2020, BY SIGN PRO INC. ALL DESIGNS PRESENTED ARE THE SOLE PROPERTY OF SIGN PRO INC. AND MAY NOT BE REPRODUCED IN PART OR WHOLE WITHOUT WRITTEN PERMISSION FROM SIGN PRO INC.

**SIGN PRO**  
signpro-usa.com

60 Westfield Drive  
Plantsville, CT 06479  
860.229.1812



SIGN TYPE

Channel Letters

PAGE

5 of 8





Project Address:  
Dobbs Ferry, NY

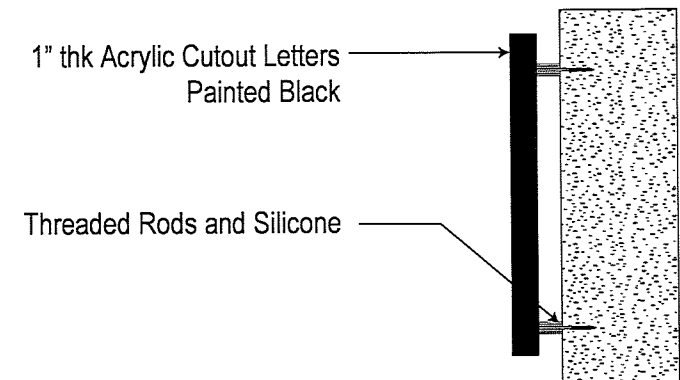
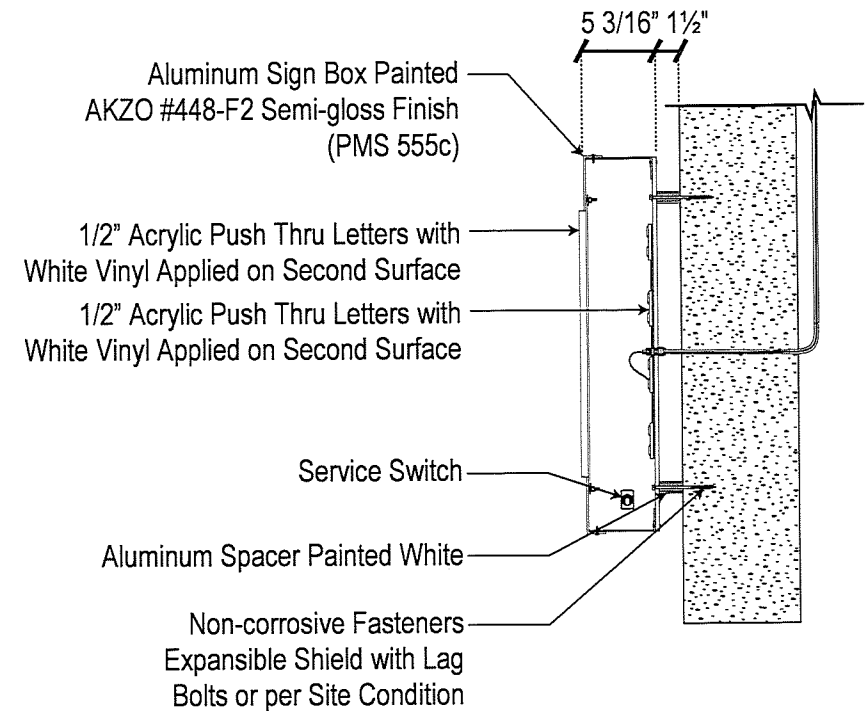
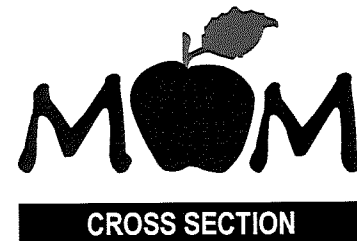
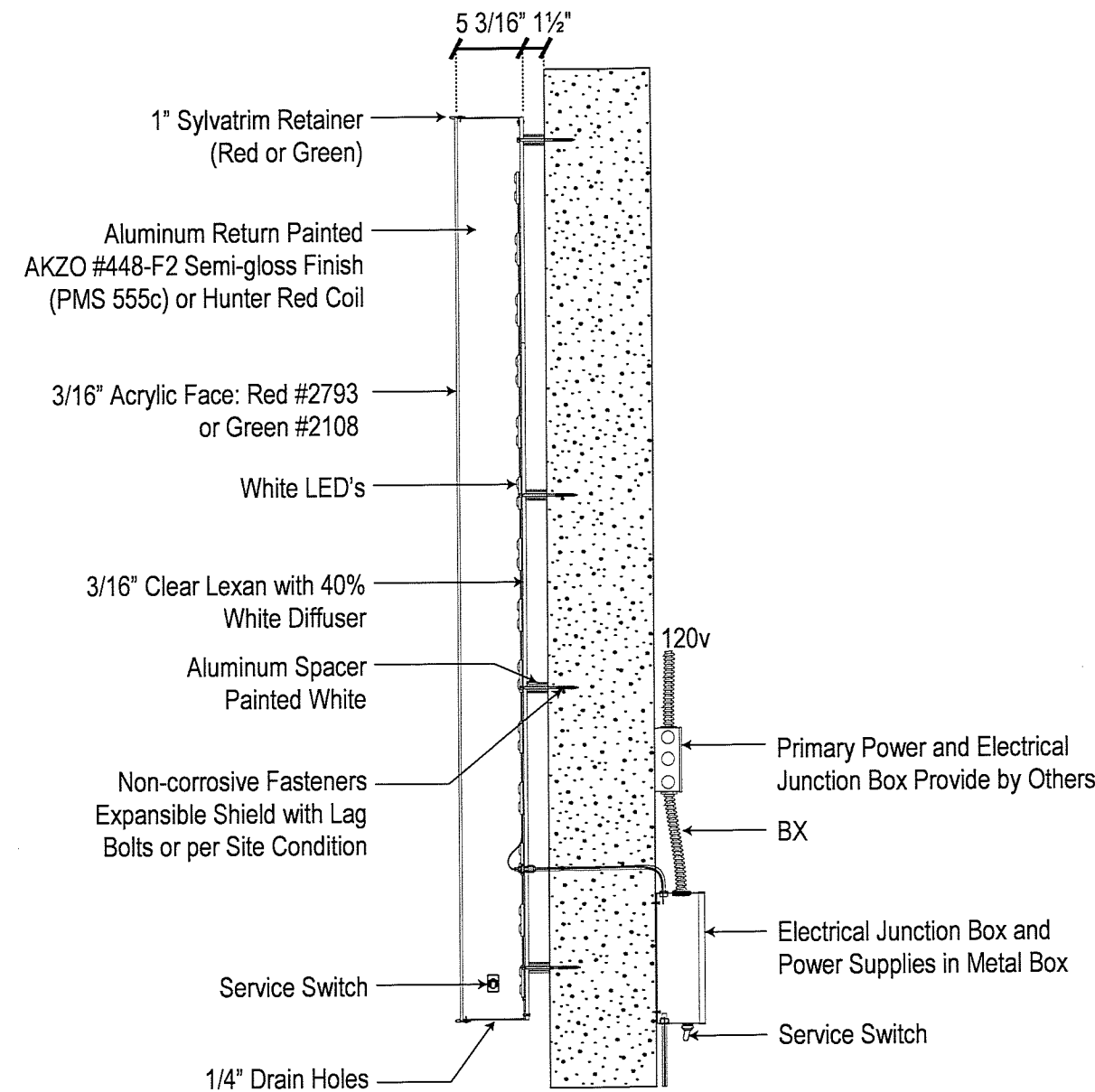
SPI WO #:52776

Issue Date: March 12, 2020

Salesperson: Pete Rappoccio  
Designer: JM

DRAWINGS ARE NOT TO SCALE  
UNLESS OTHERWISE NOTED

SPI Revisions:



WELCOME TO  
CROSS SECTION

Customer Approval: ☐ APPROVED ☐ APPROVED AS NOTED ☐ REVISE & RESUBMIT

PRINT

SIGN

DATE

© COPYRIGHT 2020, BY SIGN PRO INC. ALL DESIGNS PRESENTED ARE THE SOLE PROPERTY OF SIGN PRO INC. AND MAY NOT BE REPRODUCED IN PART OR WHOLE WITHOUT WRITTEN PERMISSION FROM SIGN PRO INC.

**SIGN PRO**  
signpro-usa.com

60 Westfield Drive  
Plantsville, CT 06479  
860.229.1812



SIGN TYPE  
**Channel Letters**  
PAGE  
**6 of 8**



Project Address:

Dobbs Ferry, NY

SPI WO #:52776

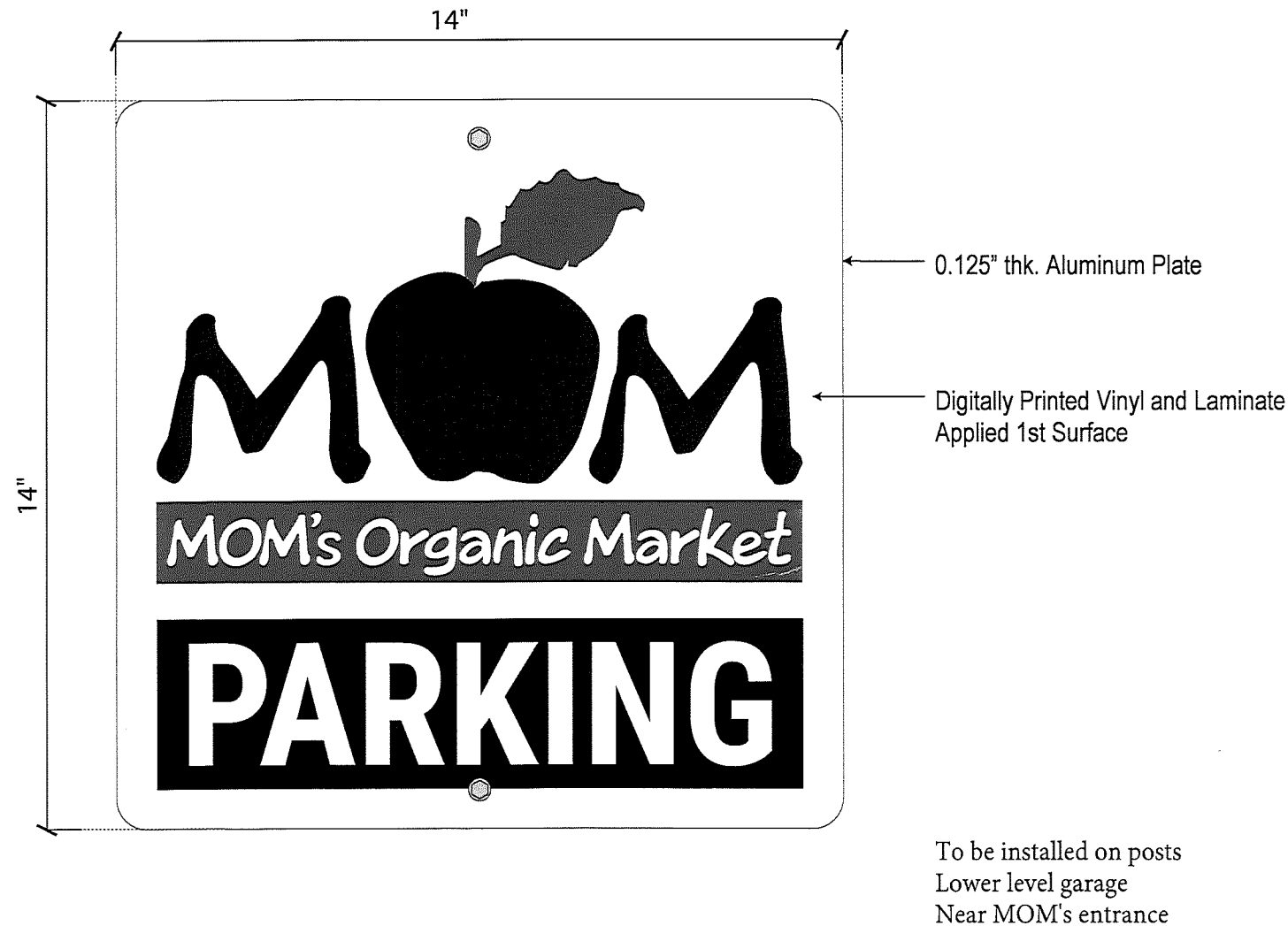
Issue Date: March 12, 2020

Salesperson: Pete Rappoccio

Designer: JM

DRAWINGS ARE NOT TO SCALE  
UNLESS OTHERWISE NOTED

SPI Revisions:



Customer Approval: ☐ APPROVED ☐ APPROVED AS NOTED ☐ REVISE & RESUBMIT

PRINT

SIGN

DATE

© COPYRIGHT 2020, BY SIGN PRO INC. ALL DESIGNS PRESENTED ARE THE SOLE PROPERTY OF SIGN PRO INC.  
AND MAY NOT BE REPRODUCED IN PART OR WHOLE WITHOUT WRITTEN PERMISSION FROM SIGN PRO INC.



signpro-usa.com

60 Westfield Drive  
Plantsville, CT 06479  
860.229.1812



SIGN TYPE  
**Parking**

PAGE

**7 of 8**



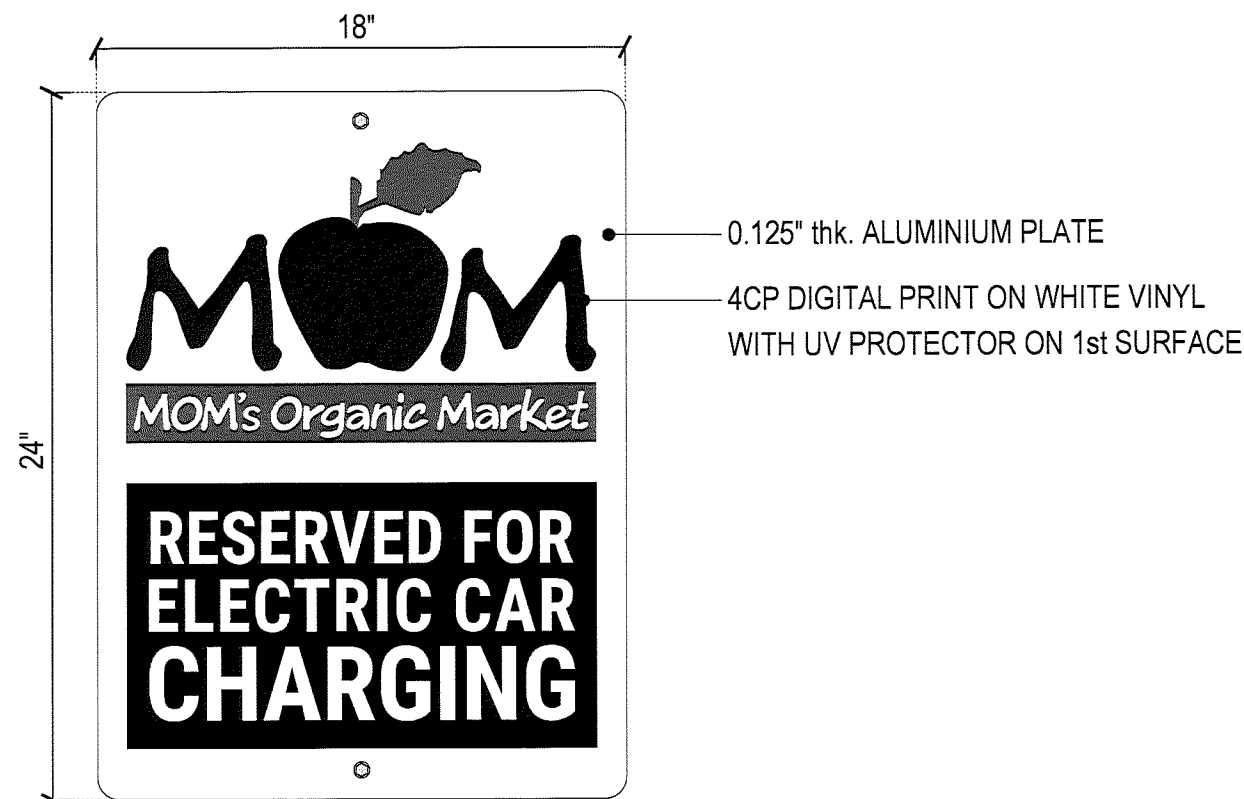
Project Address:  
Dobbs Ferry, NY

SPI WO #:52776  
Issue Date: March 12, 2020

Salesperson: Pete Rappoccio  
Designer: JM

DRAWINGS ARE NOT TO SCALE  
UNLESS OTHERWISE NOTED

SPI Revisions:



To be installed at lower level of parking  
garage Next to charging locations -  
quantity 2. See next page for location.  
This photo is incorrect; please ignore.

Customer Approval: ☐ APPROVED ☐ APPROVED AS NOTED ☐ REVISE & RESUBMIT

PRINT

SIGN

DATE

© COPYRIGHT 2020, BY SIGN PRO INC. ALL DESIGNS PRESENTED ARE THE SOLE PROPERTY OF SIGN PRO INC. AND MAY NOT BE REPRODUCED IN PART OR WHOLE WITHOUT WRITTEN PERMISSION FROM SIGN PRO INC.

**SIGN PRO**  
signpro-usa.com

60 Westfield Drive  
Plantsville, CT 06479  
860.229.1812



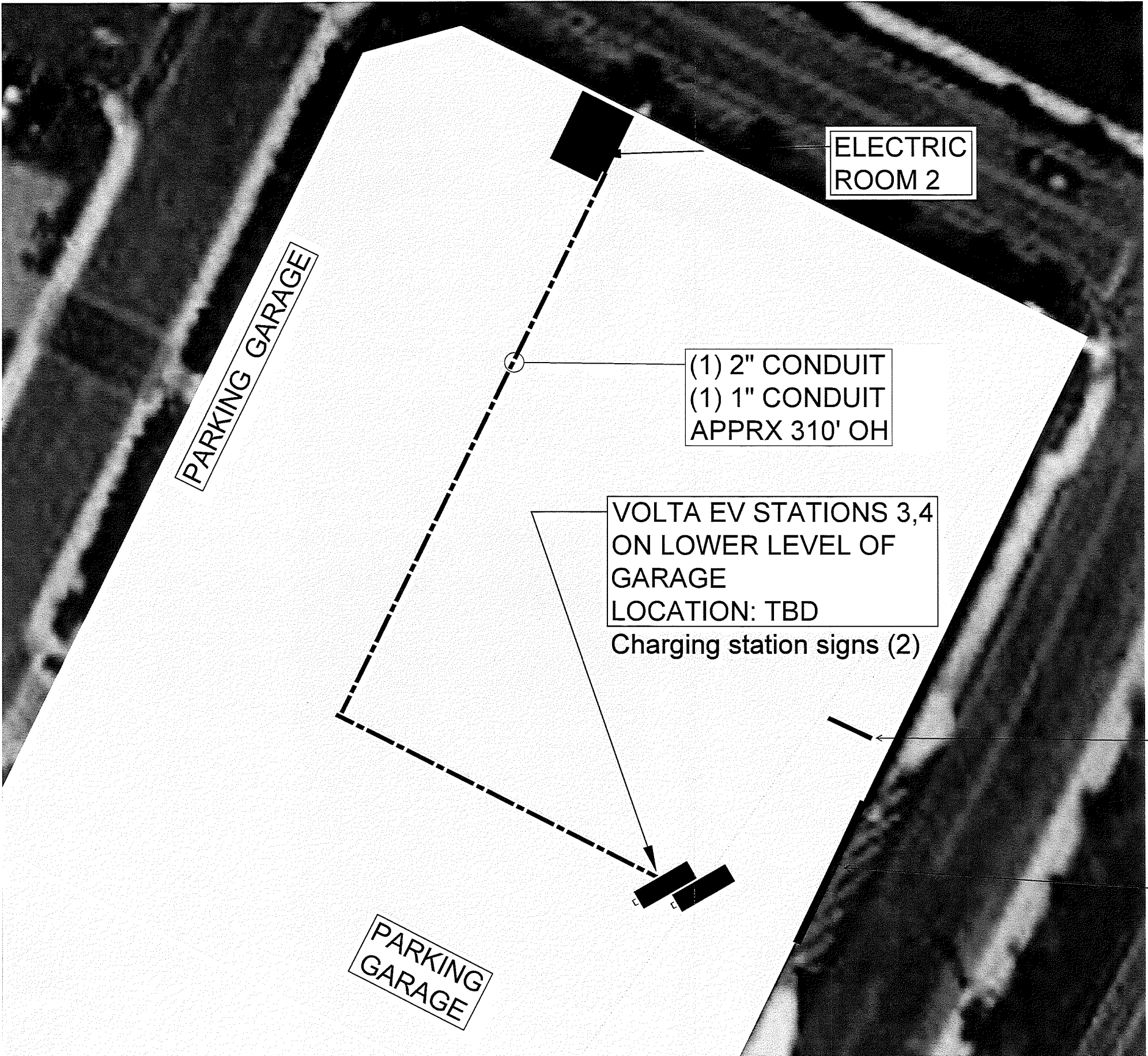
SIGN TYPE

**Charging**

PAGE

**8 of 8**





SHOP DRAWING

**VOLTA**



EV Charging Installers  
of America LLC  
188 Breakneck Rd. Suite 204  
Highland Lakes, NJ 07422  
Phone: 855-373-9566

**RIVERTOWN SQUARE  
VOLTA EV CHARGER INSTALLATION**

47-55 HAMILTON STREET  
DOBB'S FERRY, NY 10522

**Revisions**

No.	Revision/Issue	Date

Date: 09/12/2019  
Dwn By: MM  
Chk By: DEE  
AE Job # 0988  
Scale: None, U.O.N.  
Do Not Scale Drawing

**VOLTA EV STATION  
ENLARGED SITE PLAN**

Dwg: 0988-NY-EV-RivSqu-111919.dwg	Rev:
Sht: E-4.1	