



VILLAGE OF DOBBS FERRY BOARD OF TRUSTEES
AGENDA

MEETING DATE: DECEMBER 15, 2020

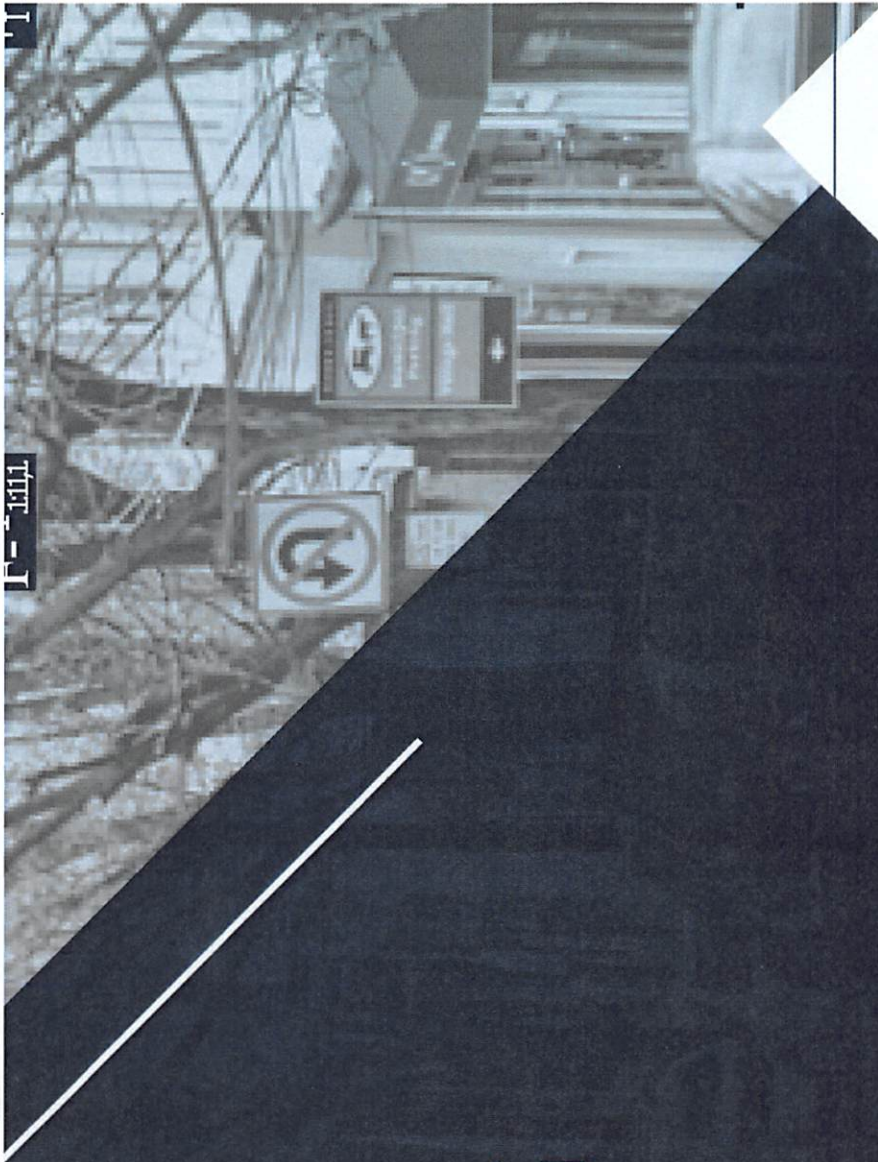
AGENDA ITEM SECTION: MATTERS REQUIRING ACTION

AGENDA ITEM NO. : 3

AGENDA ITEM: CONSIDER A MOTION TO ADOPT A RESOLUTION APPROVING LOADING ZONES ON CEDAR AND MAIN STREETS

ITEM BACKUP DOCUMENTATION:

1. POWERPOINT PRESENTATION ON LOADING ZONES



1111



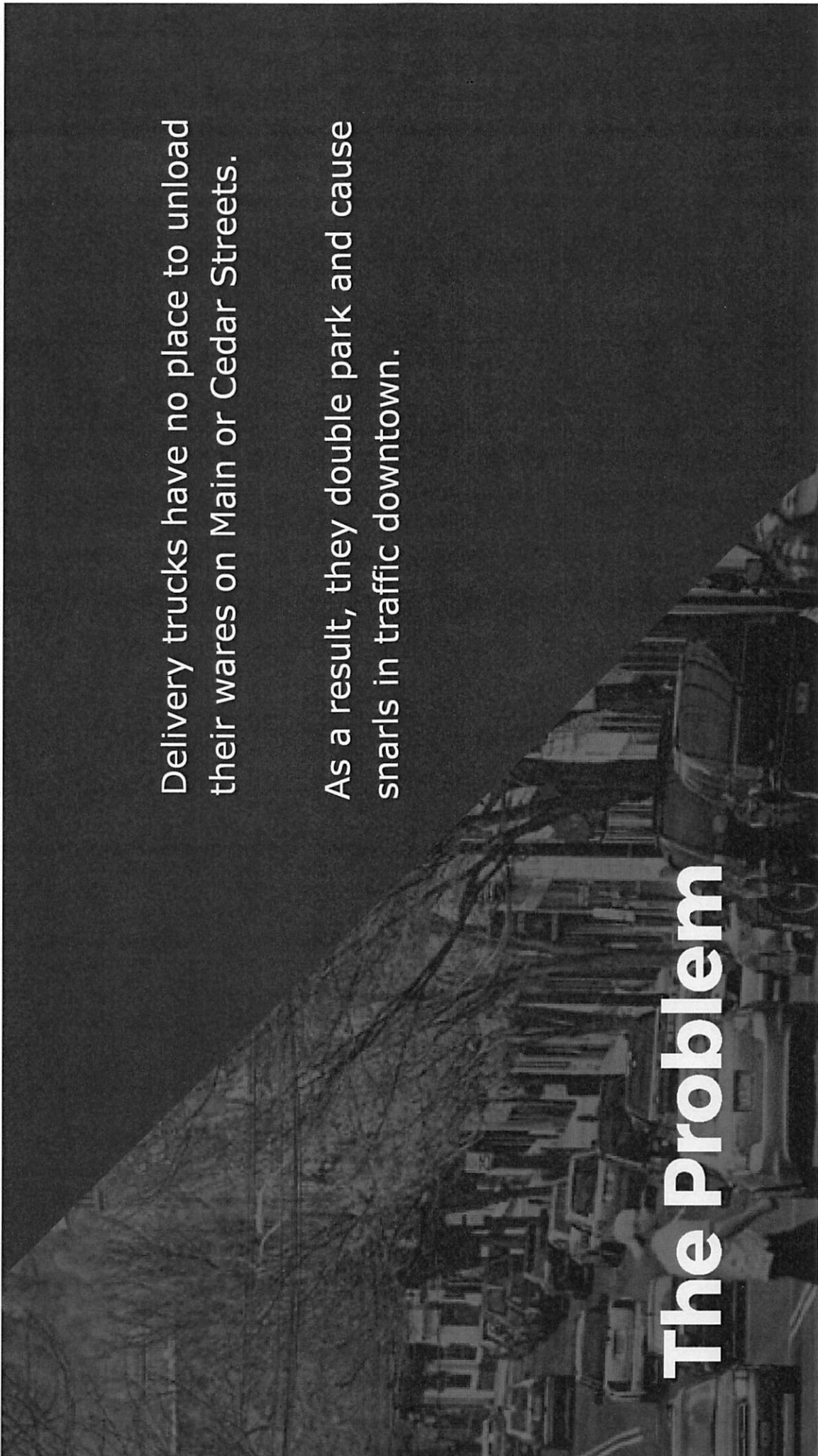
LOADING ZONES:

**One step toward
improving
downtown traffic**

Delivery trucks have no place to unload their wares on Main or Cedar Streets.

As a result, they double park and cause snarls in traffic downtown.

The Problem



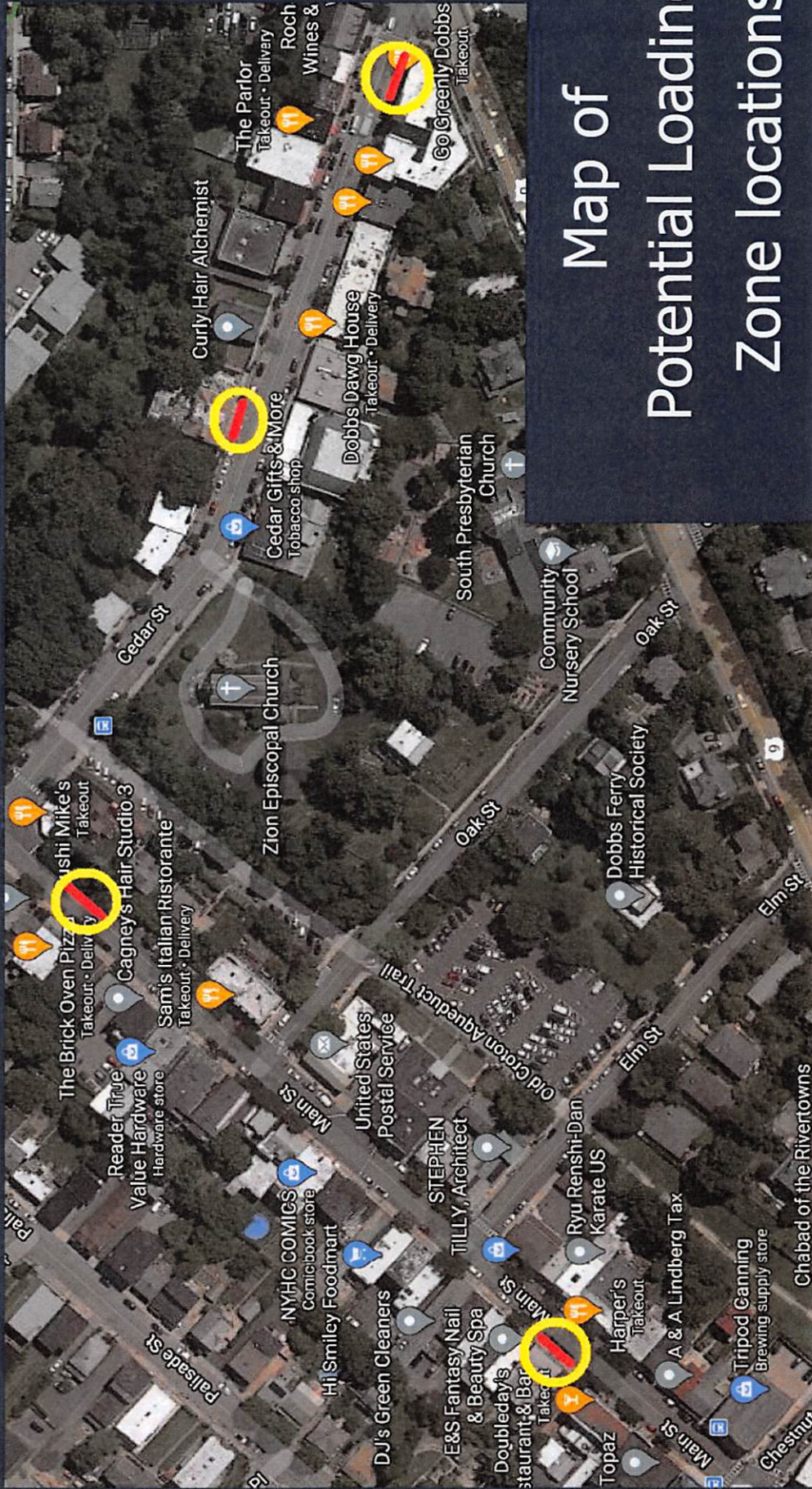
The Solution

Loading Zones

- 4 Locations: 2 on Main, 2 on Cedar
- Operative from 7am - 6pm
- Takes 8 parking spaces out of daytime use
- Free parking resumes after 6pm
- Removes 4 parking meter heads, reducing wireless fees

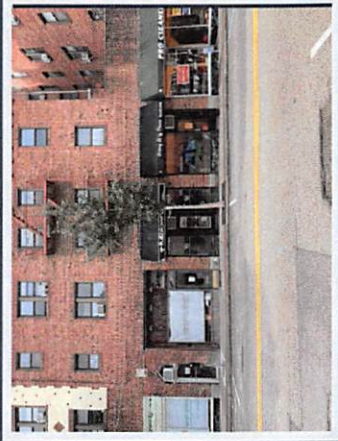
FINANCIAL IMPLICATIONS:

- Loss of parking revenue at 8 parking spots 0 Loss of \$9/day per spot x 8 = \$72/day
 - \$72/day x 6 days per week x 52 weeks per year = -\$22,464
 - This presumes maximum parking capacity which is not the norm.
- Reduction in wireless payments for 4 meter heads
 - \$8.50/ month per meter head = \$34/month = f\$408/yr

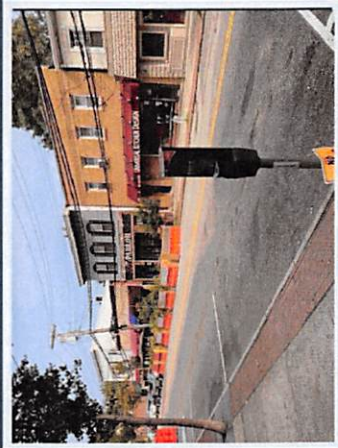


Map of Potential Loading Zone locations

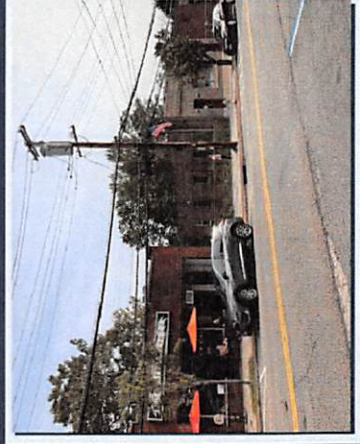
LOADING ZONE LOCATIONS



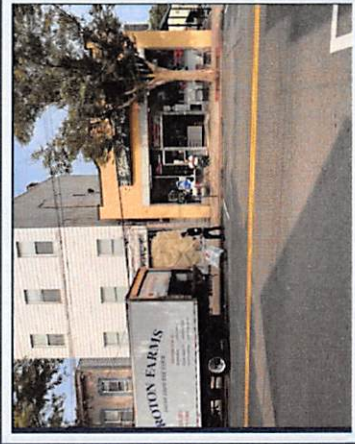
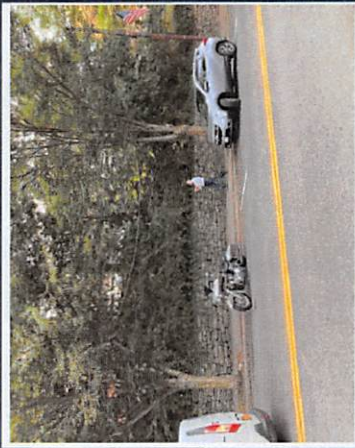
Cedar in front of Go Greenly



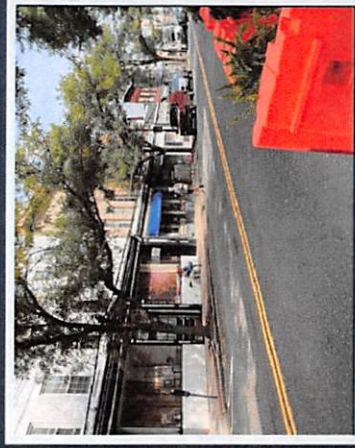
Cedar in front of Go Greenly



Cedar in front of VertPong shop (across from Stolen Moments music)



Main across from Readers Main in front of Hi-Smileys or across from Harper's



LOADING ZONES: DOWNTOWN BUSINESS SURVEY RESULTS

Total Respondents: 13

- **6 Restaurants:** Tomatillo, Rare Bit, Brick Oven, Harpers, Sweet and Savory, JJ Beans
- **3 Retail:** At Land, Endless Trail Bikeworx, NYHC Comics
- **2 Service:** Affordable Interiors, DJs Green Cleaners
- **2 Sports Facilities:** Dobbs Ferry Karate, Barre3 Rivertowns

Q1: Does traffic congestion downtown have an impact on your business?

	Restaurant	Retail	Service	Sports
Yes (5)				
No (2)				
Sometimes (6)				

Q2: Do you support the idea of adding loading zones to Cedar and Main?

	Restaurant	Retail	Service	Sports
Yes (9)				
No (2)				
Depends on implementation/enforcement (2)				

Survey Results

Q3: Would your business use any of the proposed locations for loading zones?

	Restaurant	Retail	Service	Sports
Yes (5)				
No (7)				
Maybe (1)				

Q4: Do you receive deliveries on Saturdays?

	Restaurant	Retail	Service	Sports
Yes (5)				
No (8)				
Sometimes				

Q5: Do you regularly receive deliveries outside the hours of 7am-5pm? If so when?

	Restaurant	Retail	Service	Sports
Yes				
No (8)				
Sometimes (1)				

Survey Results

Q6: Do you have control over what time your deliveries arrive?

	Restaurant	Retail	Service	Sports
Yes				I
No (7)	III	II	II	
Sometimes (5)	III	I		I

Q7: How do you envision a Loading Zone might impact your business?

Restaurants

It would help expedite deliveries. Cut congestion.

Depending on how many spaces this zone would take ... 4 per street ? 6 per street?

Might affect the parking during lunch hours

I do not see a problem with impacting my business.

Retail

If they're at the already proposed sites, I think it will affect our business very little.

Thank you for this proposal! The lack of a loading zone impacts us greatly. Paying for a premium storefront property with no parking meters in front of the space, we assumed access and prime visibility, which are keys to our business. We have shared complaints to the board and village as the bars' delivery trucks illegally park in front of our storefront, blocking visibility of our store, signage and nearby parking for several hours during the day, each day. The trucks also cause a hazard for our customers as cargo from the trucks is left on our sidewalks and we have noticed multiple instances of near accidents given proximity to the intersection. If the trucks are not parking illegally in the bus stop, they are parking partially in key spaces, including our very important and needed store pick-up space that all nearby businesses' customers utilize. We fully support designated areas, in addition to increased enforcements of trucks that do not comply.

Services

If you don't enforce the rules and make trucks use the loading zones they will continue to park either in front of my store which happens every single day mon-fri. which prohibits potential clients accessing my store. It is all about enforcement, this will fail if enforcement is not taken seriously.

The boveda by our shop always gets deliveries and the trucks idle outside our store which releases lots of fumes.

Sports

It may make parking more difficult for my clients

It does eliminate some parking spaces near my business but I think will make the flow of traffic much better and give these trucks a place to park - even UPS, Fed-Ex etc. I will say that the loading zones with the restaurants taking up parking spaces will really eliminate a lot of parking especially since the loading zones are around the restaurants.

Survey Results

Q8: Please provide any additional feedback you would like the Board to consider in their assessment of this proposal.

Restaurants

The double parked trucks are undoubtedly a problem. Losing parking spaces is not easy for anyone and I wonder whether it makes sense to start with one centrally located loading zone first. Also, will the addition of these zones lower the police's tolerance to double-parked trucks? Even two loading zones on each street will not completely eliminate the need for some trucks to double park.

Like all things if this is really enforced it could work well, if not the truck drivers will just still double park like they always have.

I think this is a wonderful idea!

Retail

As parking in downtown is always an issue, you may want to consider restricting the hours during which the loading zones are in effect

Services

Sports

Please consider the loading zones and outdoor restaurant space taking parking. I rely on my participants being able to park for classes and I feel the impact already with the restaurants.

QUESTIONS?